

**AIR2 SAN**

**TEXA's revolutionary solution  
to sanitise vehicles and workplaces**

[www.texa.com](http://www.texa.com)

**TEXA**



## THE STRONG POINTS OF TEXA AIR2 SAN

1. Completely automated process

2. HEPA filter and O<sub>2</sub> CATALYST

3. Standard ozone, temperature and humidity sensors

4. O<sub>3</sub>-O<sub>2</sub> reconversion at the end of the procedure

5. Compatibility with AXONE Nemo

6. Printable service report



It is expected that sanitation will become the most common and routine vehicle maintenance worldwide.

Mechanical workshops, but also vehicle dealerships, vehicle rent companies, taxi companies, transportation companies, fast-fit centres, carwash services and fuel stations will necessarily have to offer this service to their customers.

In a scenario featured by many improvised offers, TEXA has developed a highly professional line, expressly dedicated to the automotive industry, rich in measures and exclusive functions for the elimination of bacterium or virus.

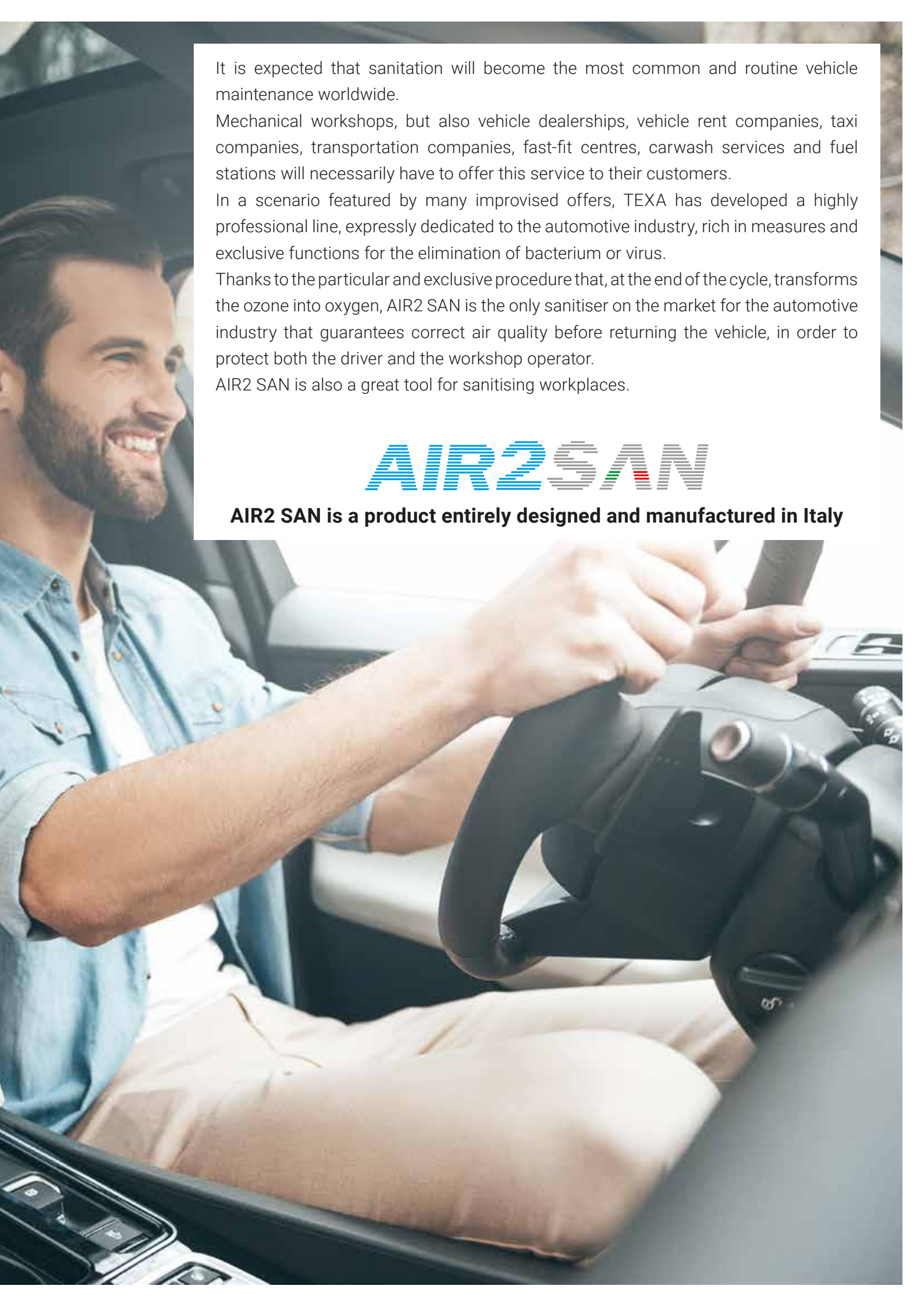
Thanks to the particular and exclusive procedure that, at the end of the cycle, transforms the ozone into oxygen, AIR2 SAN is the only sanitiser on the market for the automotive industry that guarantees correct air quality before returning the vehicle, in order to protect both the driver and the workshop operator.

AIR2 SAN is also a great tool for sanitising workplaces.

The logo for AIR2 SAN features the brand name in a stylized, multi-colored font. 'AIR2' is in blue, 'SAN' is in grey, and there is a small Italian flag graphic integrated into the 'N'.

**AIR2 SAN**

**AIR2 SAN is a product entirely designed and manufactured in Italy**



# AIR2 SAN

The TEXA AIR2 SAN kit can operate stand-alone or combined with a TEXA diagnostic system and related interface **AIR2 SAN is activated directly from outside the vehicle through a remote control supplied with it, or the free APP, and provides a completely automated sanitation of the passenger compartment. In fact, the operator has nothing to worry about, not even selecting the vehicle since AIR2 SAN, thanks to its ozone, humidity and temperature sensors, automatically provides the correct level of saturation.** When the green light appears in the display or the specific indication in the APP, the vehicle is ready to be returned to the customer, without any further operation.



In order to guarantee the utmost efficiency and professionalism of the operation, AIR2 SAN acts through three phases:

1 - During the first, AIR2 SAN, thanks to an electrostatic discharge, transforms the oxygen ( $O_2$ ) in the air in the passenger compartment, into ozone ( $O_3$ ) and spreads it in a precise, controlled and uniform way (not through a mere timer). **This phase is more efficient and safe thanks to a HEPA (High Efficiency Particulate Air Filter) filter located at intake and intended to avoid the passage of particles towards the ozone generator.**

This to guarantee the generator itself a longer life, and also, more importantly, to eliminate the risk of an accidental production of dangerous nitric acid that may generate due to the entry of particulate into the  $O_2 \rightarrow O_3$  transformation chamber.

2 - The second phase is the actual disinfection phase during which the AIR2 SAN microprocessor, based on the data provided by its sensors, **maintains the ideal amount of ozone and determines how long it needs to stay in the passenger compartment in order to eliminate mildew, fungi, viruses and bacteria, as required by the medical-surgical standards.** This automated process also eliminates any risk of human error.

3 - Contrarily to many products on the market, **TEXA introduced a third phase in the sanitation process, which is a reverse cycle that transforms the residual ozone into oxygen through a special catalyst.** In other concentrations, the ozone is in fact a harmful gas and it is essential to guarantee a minimum residual concentration before returning the vehicle. This to protect not only the customer's health, but also the operator whom is particularly exposed each time the vehicle is opened after being sanitised.



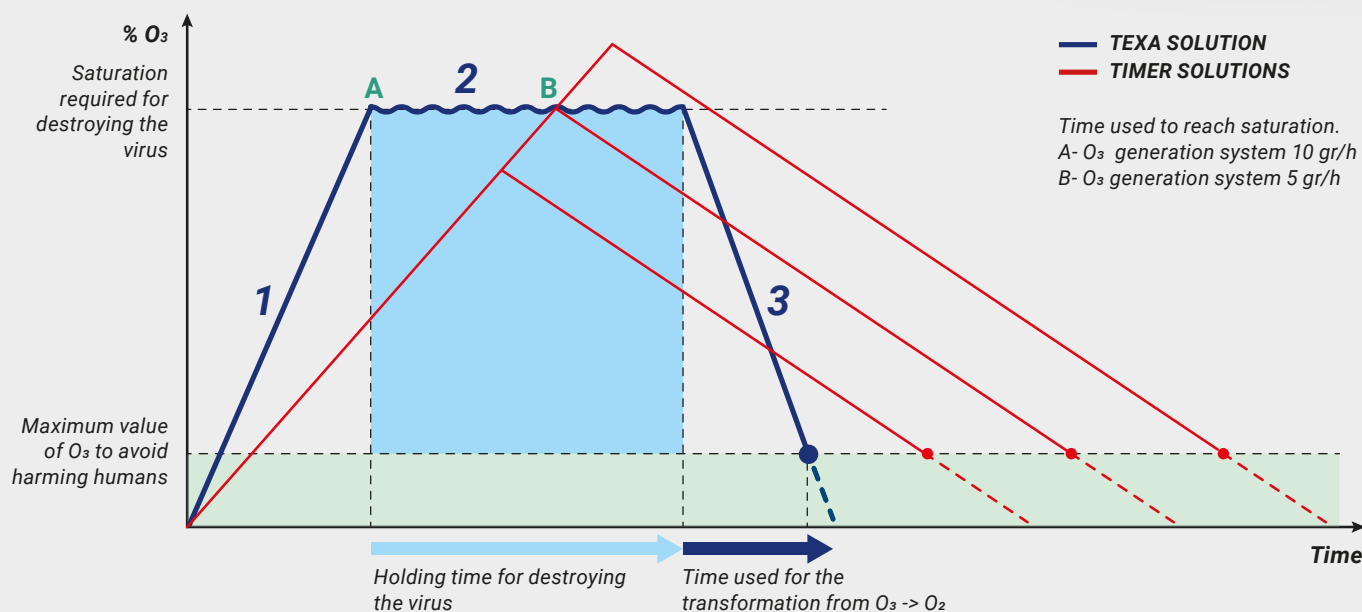
## AIR2 SAN APP

AIR2 SAN also has a free APP that can be downloaded for both iOS and Android. With the APP, you can check the progress of the process step by step, view a list of the operations carried out and **generate a PDF document that can be printed and that certifies the proper sanitation of the vehicle, which is extremely important.**



Available on the  
App Store

GET IT ON  
Google play



For a product that relies on a simple timer, it may be very difficult to reach the ideal saturation point with the consequent risk of an inappropriate sanitation or, vice versa, excessive ozone that is harmful for the components in the passenger compartment. **AIR2 SAN**, thanks to its ozone density, temperature and humidity sensors, calculates and reaches the ideal quantity quickly (Phase 1), to then pass on to an important holding phase (Phase 2). Finally, thanks to an exclusive phase for the conversion of the ozone into oxygen, it breaks down the ozone to a non-harmful amount before returning the vehicle (Phase 3).



# AIR2 SAN + AXONE NEMO

For workshops and professionals that already use AXONE Nemo and related VCI Navigator, TEXA has developed and patented an innovative integration with AIR2 SAN via Bluetooth.

The use of the diagnostics, and therefore the possibility to interact with the vehicle's electronics, allows activating, in vehicles with modern air conditioning systems, devices such as the fan, recirculation, the direction of the flows, etc.; operations that would otherwise be impossible after closing the doors for the sanitation. **AXONE Nemo will therefore make AIR2 SAN work in synchrony with the commands sent to the air conditioning system's electronic components, allowing the ozone to reach any surface in the vehicle more easily.**

The integration between AIR2 SAN and TEXA's diagnostics is free: you must simply have an AXONE Nemo with updated software in order to add the sanitation to its many functions.

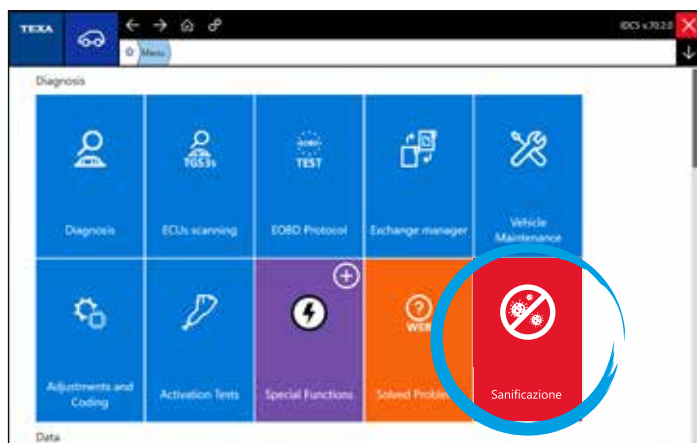


**DEPOSITED  
PATENT**

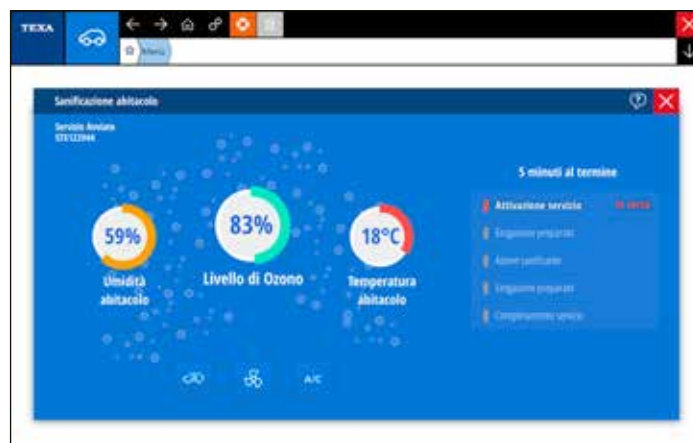
**Bluetooth®**



**AXONE NEMO**



Thanks to the integration with AIR2 SAN, TEXA's IDC5 software acquires the capability to command and control the sanitation of the vehicle.



In the program you can follow in detail all the sanitation phases, which is particularly efficient as it interacts with the vehicle's electronics.

## AIR2 SAN FOR WORKPLACES

Effective and reliable, AIR2 SAN is also perfect to sanitise hotel rooms, bars, boats, waiting rooms, offices and rooms in general. Also in this case, the operator can benefit from its completely automatic operation, by simply starting AIR2 SAN via APP and waiting for the sanitation to complete.

Thanks to its sensors, AIR2 SAN will determine the correct amount of ozone to release. Reconverting the ozone into oxygen at the end of the procedure is essential to avoid re-entering a potentially irritant or ill-smelling environment.



# Technical sheet

## AIR2SAN

O <sub>3</sub> generation capacity	Above 10 gr/h
O <sub>3</sub> generation chamber	Borosilicate glass
Type of operation	Completely automatic with controlled saturation
Sensors	Ozone, Temperature, Humidity
Air filter at treatment inlet	HEPA
O <sub>3</sub> -> O <sub>2</sub> transformation	Active carbon filter
Noisiness	<50 dB
Cabinet construction	Stainless steel
Power	max 80W (Modulated power for optimal saturation)
Air flow volume	210 m <sup>3</sup> /h each
Dimensions	335 x 182 x 208 mm
Weight	4.7 Kg
Power supply	12 V (cigarette lighter socket) / 100-240 V (optional)
Remote control	Standard
Remote control	Via APP (Apple Store / Google Play Store) or IDC5 (AXONE Nemo)
Status indicators	2 LED
Bluetooth	Standard
Ministerial regulation conformity	Prot. no. 24482 31/07/1996 and CNSA 27/10/2010

For further information on the efficiency of the ozone against the Coronavirus: [www.texa.com/Ozone-covid-19](http://www.texa.com/Ozone-covid-19)



### WARNING

The trademarks and logos of vehicle manufacturers in this document have been used exclusively for information purposes and are used to clarify the compatibility of TEXA products with the models of vehicles identified by the trademarks and logos. Because TEXA products and software are subject to continuous developments and updates, upon reading this document they may not be able to carry out the DIAGNOSTICS of all the models and electronic systems of each vehicle manufacturer mentioned within this document. The images and the vehicle outlines within this document have been included for the sole purpose of making it easier to identify the vehicle category (car, truck, motorbike, etc.) for which the TEXA product and/or software is intended. **The data, descriptions and illustrations may change compared to those described in this document. TEXA S.p.A. reserves the right to make changes to its products without prior notice.**

The BLUETOOTH brand is the property of Bluetooth SIG, Inc., U.S.A., and is used by TEXA S.p.A. under license.

Android is a trademark of Google Inc

Copyright TEXA S.p.A.  
cod. 8801517  
05/2020 - UK\_V3

The TEXA logo, consisting of the word 'TEXA' in white capital letters on a dark blue square background.

TEXA UK  
32 - 34 Churchill Way  
Lomeshaye Industrial Estate  
Nelson - Lancashire  
BB9 6RT United Kingdom  
Tel. 00 44 (0)1282 606 787  
[www.texa.co.uk](http://www.texa.co.uk) - [sales.uk@texa.com](mailto:sales.uk@texa.com)