

AIR POWER TOOLS

 [back to Section List](#)



Air Abrasive/Stripe Removal Tools

815

Air Angle Grinders

824

Air Belt Sanders

816

Air Blow Guns

828-829

Air Cut-Off Tools

825

Air Die Grinders

812-814

Air Drills

810-811

Air Hammers

821-822

Air Nailer/Staplers

827

Air Nibblers & Shears

821

Air Ratchet Wrenches

808-809

Air Riveters

826

Air Sanders & Polishers

816-819

Air Saws

820

Air Screwdrivers

810

Air Tyre Buffers

824

Air Impact Wrenches

802-807

AIR POWER TOOLS

NEW
AIR BLOW GUNS
SA9250, SA9251
& SA9252
SEE PAGE 829

NEW
SA6010 1/2"SQ DRIVE
SUPER STUBBY
SWIVEL HEAD AIR
IMPACT WRENCH
SEE PAGE 803

BRANDS EXPLAINED

Premier

Our Premier range offers superb performance while still being competitively priced. Premier Air Tools are made up of the very highest quality components and manufacturing designs to offer a long and durable working life. As with all of our ranges, Premier Air Tools are backed with unrivalled and extensive aftersales care including a 3 year guarantee.

Siegen

Offering impressive reliability and exceptional value for money. Our Siegen range is backed up with the same professional aftersales service as the Sealey and Premier ranges.

Generation

These tools feature contoured, soft grip handles and housings which help reduce the effects of vibration and chill - major contributors to circulatory and nerve problems such as Raynaud's Phenomenon, also referred to as "white finger". The tools also include exhaust systems designed to reduce noise levels by baffling the noise or directing it away from the operator's environment.

SEALEY

Our Sealey range is defined by traditional designs and proven workshop reliability. Our core range, trusted for over 40 years, is one of the UK's market leaders in tools and equipment.

Our Torque Specifications

In order to clarify the torque characteristics of these tools, we quote two figures:

Fastening Torque

The maximum torque figures are those developed by tightening a bolt.

Breakaway Torque

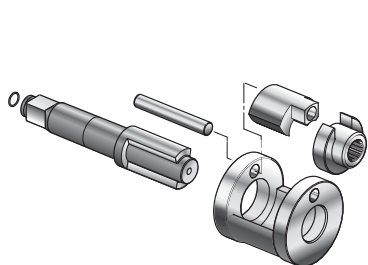
The breakaway torque is the highest bolt torque that the tool will undo within a reasonable time. It is not related to the torque to which the tool can tighten the bolt.

TORQUE TESTED

All our impact tools are thoroughly tested during the initial selection phase to ensure the power we quote is the power you get. Power output curves for all our impact tools are constructed so we can rate them for fastening and breakaway torque. We recommend the use of an air management system to protect the tools from dirt, rust and damage.

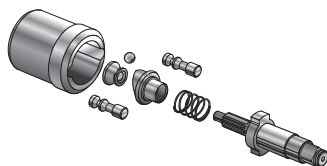


Which Drive Type?



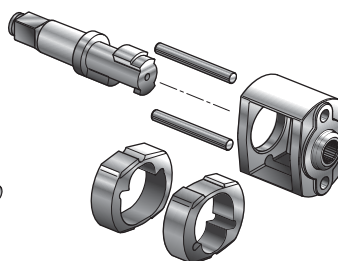
Standard Hammer

Commonly referred to as 'rocking-dog' hammer. Combines simplicity of construction with high level of power output. Includes single hammer weight, counterbalanced with hammer dog. Ideal for price competitive workshop power tools.



Pin Clutch

Torque delivery of a pin clutch impact wrench is fast, steady and smooth. The clutch design also reduces vibration and noise levels. Pin clutch impact wrenches are recommended for prolonged usage with a preset air pressure supply. Always refer to the guns operating pressure before use and never exceed. Failure to do so may result in premature failure.



Twin Hammer

Twice the number of hammers, twice the hammer weight and therefore twice the energy per blow. Fast delivery of raw power with the bulletproof reliability of a standard hammer mechanism. Ideal for heavy hitting power in the tyre shop and workshop.



B

3/8"
Sq DriveStandard
Hammer

C

3/8"
Sq DriveStandard
Hammer

B SA91

3/8" Sq Drive Butterfly Air Impact Wrench

Fingertip forward/reverse throttle control. Fitted with rocking-dog clutch, 9-position air/torque control and Z-swivel air inlet. One-handed operation and compact size make this tool especially suitable for engine bay work.

Drive:	3/8" Sq
Fastening Torque:	120lb.ft(162Nm)
Breakaway Torque:	130lb.ft(177Nm)
Free Speed:	10,000rpm
Air Consumption:	3cfm
Operating Pressure:	90psi
Inlet Size:	1/4" BSP
Weight:	0.83kg
Noise Power/Pressure:	102/91dB(A)
Vibration/Uncertainty:	5.17/1.5m/s ²

C SA912

3/8" Sq Drive Air Impact Wrench

Pistol type wrench with rocking-dog clutch and hardened anvil assembly. Fitted with 4-position air/torque control and push-through reverse control. Compact and lightweight tool suitable for engine bay work.

Drive:	3/8" Sq
Fastening Torque:	190lb.ft(258Nm)
Breakaway Torque:	200lb.ft(271Nm)
Free Speed:	10,000rpm
Air Consumption:	3.5cfm
Operating Pressure:	90psi
Inlet Size:	1/4" BSP
Weight:	0.97kg
Noise Power/Pressure:	102/91dB(A)
Vibration/Uncertainty:	5.17/1.5m/s ²



A

Premier

1/4"
Sq Drive3 YEAR
GUARANTEE*

A SA141

1/4" Sq Drive Air Impact Wrench Diesel Glow Plug Kit

Reduced torque impact wrench suitable for the removal of seized glow plugs on diesel engines. Features a 4-position air regulator which provides limited torque settings to suit. One-handed operation for trigger and forward/reverse control. Soft grip reduces vibration, chill effect and adds comfort. Handle exhaust helps to lower noise level during use. Includes five deep impact sockets, extension bar and universal joint. Supplied with foam insert and metal storage case.

Drive:	1/4" Sq
Torque Settings:	10, 20, 30, 40Nm
Free Speed:	10000rpm
Air Consumption:	5cfm
Operating Pressure:	90psi
Inlet Size:	1/4" BSP
Weight:	0.8kg
Noise Power/Pressure:	102/91dB(A)
Vibration/Uncertainty:	5.1/1.0m/s ²
Contents:	1/4" Sq Drive Deep Impact Sockets; 8, 9, 10, 11, 12mm, 50mm Extension Bar, 1/4" Sq Drive Universal Joint



D

Generation

3/8"
Sq DriveTwin
Hammer

Composite

D GSA6000

3/8" Sq Drive Composite Air Impact Wrench - Twin Hammer

Combination of composite materials, alloyed metals and twin hammer design result in a lightweight, durable and powerful air impact wrench. Soft grip handle with downward facing exhaust, make this wrench comfortable on the hands and ears and limits the circulation of brake dust on wheel applications. Fingertip control of power and direction via lever on rear of wrench.

Drive:	3/8" Sq
Fastening Torque:	442lb.ft(600Nm)
Breakaway Torque:	486lb.ft(660Nm)
Free Speed:	9800rpm
Air Consumption:	8.5cfm
Operating Pressure:	114psi
Inlet Size:	1/4" BSP
Weight:	1.52kg
Noise Power/Pressure:	100/89dB(A)
Vibration/Uncertainty:	3.1/1.6m/s ²



6 1/2" Sq Drive

A SA2/TS
1/2" Sq Drive Air Impact Wrench Kit with Sockets

Comprises 1/2" Sq drive rocking-dog air impact wrench, 125mm extension bar and ten 1/2" Sq drive WallDrive® Chrome Vanadium impact sockets. Kit also includes in-line air oiler and air tool oil pot. Supplied in storage case.

Contents: 1/2" Sq Drive, Sockets; 9, 10, 11, 13, 14, 17, 19, 22, 24, 27mm, 125mm Extension Bar
Impact Wrench: SA2 - 1/2" Sq Drive
Total Weight: 4kg



B SA2
1/2" Sq Drive Air Impact Wrench

Fitted with rocking-dog hammer and hardened impact anvil. Suitable for garage, tyre shop and workshop applications. Features 4-position adjustable air/torque control and reversible action.



C SA201
1/2" Sq Drive Composite Air Impact Wrench Twin Hammer

Combination of composite materials, alloyed metals and twin hammer design, result in a lightweight, durable and powerful air impact wrench. Composite handle helps reduce the effects of vibration and chill. Handle exhaust reduces noise output and limits the circulation of brake dust on wheel applications. Fingertip Control of power and direction via lever on rear of wrench.



D SA6010
1/2" Sq Drive Super Stubby Air Impact Wrench - Twin Hammer

Swivel mechanism allows for high range of accessibility. Stubby length of 85mm from anvil to rear casing allows access into tight areas. One-handed operation with forward/reverse control at your fingertips. 360° Adjustable handle for optimal range of motion in any position.



E SA6002S
1/2" Sq Drive Stubby Air Impact Wrench Twin Hammer

Composite body with aluminium front casing for lightweight and durability. Stubby length of 116mm from anvil to rear of body allows access into tight areas. One-handed operation with 3-speed selector switch and forward/reverse control at your fingertips. Handle features a downward facing exhaust to lower noise level and soft grips to help reduce vibration and chill.

	B	C	D	E
Model No:	SA2	SA201	SA6010	SA6002S
Drive:	1/2" Sq	1/2" Sq	1/2" Sq	1/2" Sq
Fastening Torque:	230lb.ft(312Nm)	450lb.ft(610Nm)	396lb.ft(500Nm)	500lb.ft(678Nm)
Breakaway Torque:	237lb.ft(322Nm)	590lb.ft(800Nm)	966lb.ft(1310Nm)	800lb.ft(1085Nm)
Free Speed:	7000rpm	8500rpm	8000rpm	7800rpm
Air Consumption:	5cfm	7cfm	4cfm	4.8cfm
Operating Pressure:	90psi	90psi	90psi	90psi
Inlet Size:	1/4" BSP	1/4" BSP	1/4" BSP	1/4" BSP
Weight:	2.2kg	2.05kg	1.34kg	1.16kg
Noise Power/Pressure:	102/91dB(A)	107/96dB(A)	101/90dB(A)	110/100dB(A)
Vibration/Uncertainty:	5.17/1.5m/s ²	4/2m/s ²	4.894/1.5m/s ²	8.627/1.5m/s ²



Generation

A GSA02
1/2\"/>

Generation Series twin hammer impact wrench. Suitable for garage, tyre shop and workshop applications. Handle exhaust reduces noise output and contoured soft grip handle gives added comfort and control. Features 3-position adjustable air/torque control and reversible action.



Generation

B GSA6002
1/2\"/>

Combination of composite materials, alloyed metals and twin hammer design result in a lightweight, durable and powerful air impact wrench. Soft grip handle, with downward facing exhaust, makes this wrench comfortable on the hands and ears and limits the circulation of brake dust on wheel applications. Fingertip control of power and direction via lever on rear of wrench.



Generation

C GSA6006
1/2\"/>

Combination of composite materials, alloyed metals and twin hammer design, result in a lightweight, durable and powerful air impact wrench. Soft grip handle, with downward facing exhaust, makes this wrench comfortable on the hands and ears and limits the circulation of brake dust on wheel applications. Fingertip control of power and direction via lever on rear of wrench.



Premier

D SA602
1/2\"/>

Powerful 1/2\"/>



Premier

E SA6006
1/2\"/>

Twin hammer design gives the wrench a high torque output making it suitable for jobs that would normally require a 3/4\"/>



F APMH
Magnetic Impact Wrench Holder

Ideal for holding 1/2\"/>

	A	B	C	D	E
Model No:	GSA02	GSA6002	GSA6006	SA602	SA6006
Drive:	1/2\"/>	1/2\"/>	1/2\"/>	1/2\"/>	1/2\"/>
Fastening Torque:	460lb.ft(626Nm)	590lb.ft(800Nm)	737lb.ft(1000Nm)	480lb.ft(653Nm)	950lb.ft(1288Nm)
Breakaway Torque:	500lb.ft(680Nm)	650lb.ft(880Nm)	1,180lb.ft(1600Nm)	500lb.ft(680Nm)	1050lb.ft(1428Nm)
Free Speed:	700rpm	800rpm	850rpm	750rpm	900rpm
Air Consumption:	5.6cfm	17.6cfm	6.5cfm	4.2cfm	9.5cfm
Operating Pressure:	90psi	114psi	90psi	90psi	90psi
Inlet Size:	1/4\"/>	1/4\"/>	1/4\"/>	1/4\"/>	1/4\"/>
Weight:	2.1kg	2.28kg	2.1kg	2.6kg	2.1kg
Noise Power/Pressure:	101/90dB(A)	105/94dB(A)	111/100dB(A)	103/92dB(A)	104/93dB(A)
Vibration/Uncertainty:	7.76/1.26m/s ²	8.5/1.5m/s ²	6.389/1.5m/s ²	5.47/1.5m/s ²	4.45/0.94m/s ²

A **3 YEAR GUARANTEE*** **1/2" Sq Drive** **Twin Hammer** **Composite**



Premier

A SA6002
1/2" Sq Drive Air Impact Wrench
Twin Hammer

Composite body with aluminium front casing for lightweight and durability. One-handed operation with 3-speed selector switch and forward/reverse control at your fingertips. Handle features a downward facing exhaust to lower noise level and soft grips to help reduce vibration and chill.

B **3 YEAR GUARANTEE*** **1/2" Sq Drive** **Twin Hammer** **Composite** **HIGH TORQUE 1355Nm** **LIGHTWEIGHT 1.6kg**

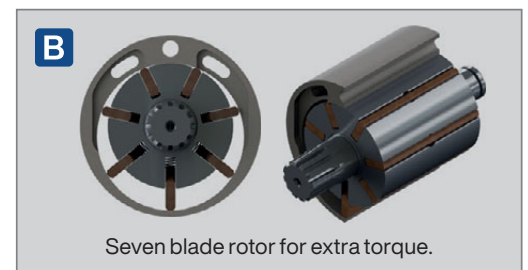
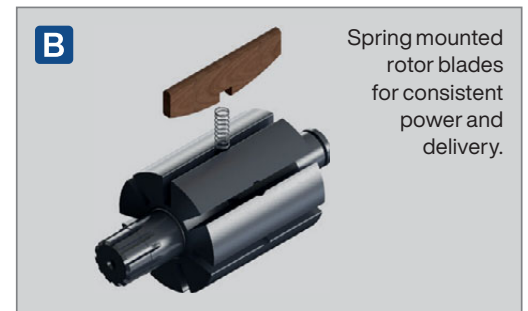


Premier



B SA6007
1/2" Sq Drive Composite Air Impact Wrench
Twin Hammer

Twin hammer design gives the wrench a high torque output making it suitable for jobs that would normally require a 3/4" Sq drive impact wrench. Features spring mounted rotor blades, providing constant power and extended life. Fingertip control of power and direction via lever on rear of wrench. Handle exhaust with built-in silencer to help reduce noise level and limits circulation of brake dust on wheel applications.



C **3/4" Sq Drive** **Standard Hammer**



C SA4
3/4" Sq Drive Air Impact Wrench

Fitted with rocking-dog hammer mechanism with hardened anvil and cage. Features variable air/torque control and reversible action. Polished aluminium housing.

D **Generation** **3/4" Sq Drive** **Twin Hammer** **Composite**



D GSA6004
3/4" Sq Drive Composite Air Impact Wrench - Twin Hammer

Combination of composite materials, alloyed metals and twin hammer design result in a durable and powerful air impact wrench. Soft grip handle with downward facing exhaust makes this wrench comfortable on the hands and ears and limits the circulation of brake dust on wheel applications. Fingertip power control and direction via lever on rear of wrench.

	A	B	C	D
Model No:	SA6002	SA6007	SA4	GSA6004
Drive:	1/2" Sq	1/2" Sq	3/4" Sq	3/4" Sq
Fastening Torque:	800lb.ft(1085Nm)	1000lb.ft(1355Nm)	520lb.ft(707Nm)	1180lb.ft(1600Nm)
Breakaway Torque:	1400lb.ft(1900Nm)	1320lb.ft(1789Nm)	540lb.ft(734Nm)	1300lb.ft(1760Nm)
Free Speed:	7300rpm	9000rpm	4500rpm	4200rpm
Air Consumption:	5.4cfm	5.5cfm	7cfm	30cfm
Operating Pressure:	90psi	90psi	90psi	114psi
Inlet Size:	1/4" BSP	1/4" BSP	1/4" BSP	3/8" BSP
Weight:	2kg	1.6kg	4.5kg	4.4kg
Noise Power/Pressure:	111/100dB(A)	105/94dB(A)	107/96dB(A)	108/97dB(A)
Vibration/Uncertainty:	6.922/2.77m/s ²	14.23/1.9m/s ²	4.89/0.98m/s ²	7.7/2.4m/s ²

A

3/4"
Sq DriveTwin
Hammer

3 YEAR

GUARANTEE*

Premier

B

3/4"
Sq DriveTwin
HammerWeights Just
2.09kg

Composite

3 YEAR

GUARANTEE*

Premier

HIGH TORQUE

LOW AIR CONSUMPTION

A SA604

3/4" Sq Drive Premier Air Impact Wrench
Twin Hammer

Twin hammer mechanism utilises oversized hammers and specially strengthened hammer cage to pull even more torque out of the precision air motor. Precision made components fit closely to reduce air leakage and maximize power. Flip reverse control on the rear of the tool with 4-position air regulator on the handle base.

B SA6004

3/4" Sq Drive Compact Air Impact Wrench
Twin Hammer

Composite body with aluminium front casing for lightweight and durability. One-handed operation with 3-speed selector switch and forward/reverse control at your fingertips. Handle features a downward facing exhaust to lower noise level and soft grips to help reduce vibration and chill.

IMPACT
SOCKETS

For our full range of
Impact Sockets, see
pages 92 to 105.



C

1"
Sq Drive

Pin Clutch

C SA297

1" Sq Drive Air Impact Wrench - Pin Clutch

Pin clutch mechanism provides smooth operation reducing vibration, whilst still creating a high torque output. Control direction and power via 4-position lever adjustment on rear of wrench. Supplied with side handle for added control.

D

1"
Sq DriveTwin
Hammer

Composite

Generation

D GSA6005

1" Sq Drive Composite Air Impact Wrench - Twin Hammer

Combination of composite materials, alloyed metals and twin hammer design result in a durable and powerful air impact wrench. Soft grip handle with downward facing exhaust makes this wrench comfortable on the hands and ears and limits the circulation of brake dust on wheel applications. Fingertip power control and direction via a dial on rear of wrench. Supplied with side handle.

	A	B	C	D
Model No:	SA604	SA6004	SA297	GSA6005
Drive:	3/4" Sq	3/4" Sq	1" Sq	1" Sq
Fastening Torque:	1150lb.ft(1564Nm)	800lb.ft(1085Nm)	1200lb.ft(1632Nm)	1475lb.ft(2000Nm)
Breakaway Torque:	1200lb.ft(1632Nm)	1400lb.ft(1900Nm)	1500lb.ft(2040Nm)	1660lb.ft(2250Nm)
Free Speed:	6500rpm	7300rpm	4000rpm	4200rpm
Air Consumption:	7cfm	5.4cfm	15cfm	38cfm
Operating Pressure:	90psi	90psi	90psi	114psi
Inlet Size:	1/4" BSP	1/4" BSP	3/8" BSP	3/8" BSP
Weight:	4.6kg	2.09kg	5.6kg	5.9kg
Noise Power/Pressure:	108/97dB(A)	114/103dB(A)	104/93dB(A)	115/104dB(A)
Vibration/Uncertainty:	10.3/1.5m/s ²	7.333/2.9m/s ²	7.75/1.26m/s ²	9.4/1.3m/s ²

A



Composite 1" Sq Drive
Twin Hammer
HIGH TORQUE 2970Nm



3 YEAR GUARANTEE*
Premier



Spring loaded rotor blades for consistent power and delivery.

A SA6008

1" Sq Drive Composite Air Impact Wrench - Twin Hammer

Lightweight handling and heavyweight power. Features twist control at back of tool for simple choice of speed and direction. Composite housing with soft grip and side handle helps reduce vibration and chill. Handle exhaust reduces noise level. Powerful twin hammer mechanism gives high torque output.

C

Composite

1" Sq Drive

Twin Hammer



Premier

3 YEAR GUARANTEE*

C SA686

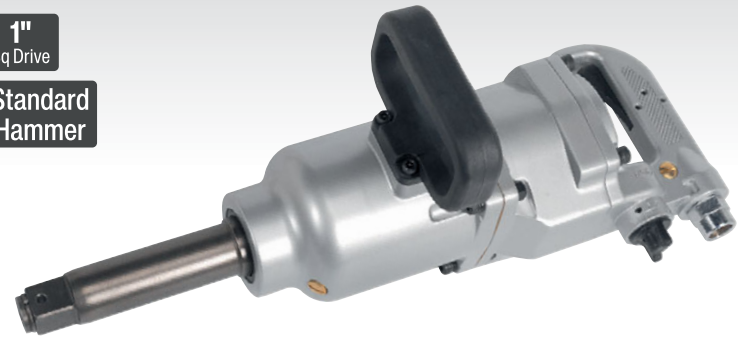
1" Sq Drive Air Impact Wrench - Twin Hammer

Impact wrench weighs just 7.72kg, manufactured from a composite and aluminium housing. Fitted with soft grip handles to help reduce vibration and chill effects. Features twin hammer function providing extremely high output ideal for commercial and agricultural applications. Twist controls for simple choice of speed and direction.

B

1" Sq Drive

Standard Hammer



B SA29/S

1" Sq Drive Air Impact Wrench Straight - Long Anvil

Suitable for commercial and agricultural vehicle use. Long anvil and straight configuration with rocking-dog hammer for applications with restricted access. Fitted with reverse action. Supplied with side handle.

D

200L

3hp

15.0 cfm



D SAC2203B

200L Belt Drive Air Compressor 3hp with Cast Cylinders

For full details, see page 777.

	A	B	C
Model No:	SA6008	SA29/S	SA686
Drive:	1" Sq	1" Sq	1" Sq
Fastening Torque:	2200lb.ft(2970Nm)	1460lb.ft(1986Nm)	2700lb.ft(3661Nm)
Breakaway Torque:	2500lb.ft(3375Nm)	1520lb.ft(2067Nm)	3000lb.ft(4067Nm)
Free Speed:	5500rpm	4000rpm	5500rpm
Air Consumption:	7.5cfm	15cfm	6.94cfm
Operating Pressure:	90psi	90psi	90psi
Inlet Size:	1/2" BSP	1/2" BSP	1/2" BSP
Weight:	5.7kg	13.5kg	7.72kg
Noise Power/Pressure:	114/103dB(A)	107/96dB(A)	100.1dB(A)
Vibration/Uncertainty:	20.42/1.59m/s ²	9.94/1.48m/s ²	12.87/1.77m/s ²

A-B

1/4" or 3/8"
Sq Drive

Stubby

A-B SEE BELOW

Super Stubby Air Ratchet Wrenches

Ultra-compact air ratchet wrenches fit in the palm of the hand. Perfect for working around tightly-packed engine compartments. Hardened steel anvil and twist-reverse mechanism. Rear exhaust with baffle reduces noise.

	A	B
Model No:	SA230	SA231
Drive:	1/4"Sq	3/8"Sq
Maximum Torque:	20lb.ft(27Nm)	20lb.ft(27Nm)
Free Speed:	300rpm	300rpm
Air Consumption:	3cfm	3cfm
Operating Pressure:	90psi	90psi
Inlet Size:	1/4"BSP	1/4"BSP
Length:	127mm	127mm
Noise Power/Pressure:	102/91dB(A)	102/91dB(A)
Vibration/Uncertainty:	2.5/0.078m/s ²	2.5/0.078m/s ²
Weight:	0.36kg	0.36kg

C-D

1/4" or 3/8"
Sq Drive

Compact

Generation

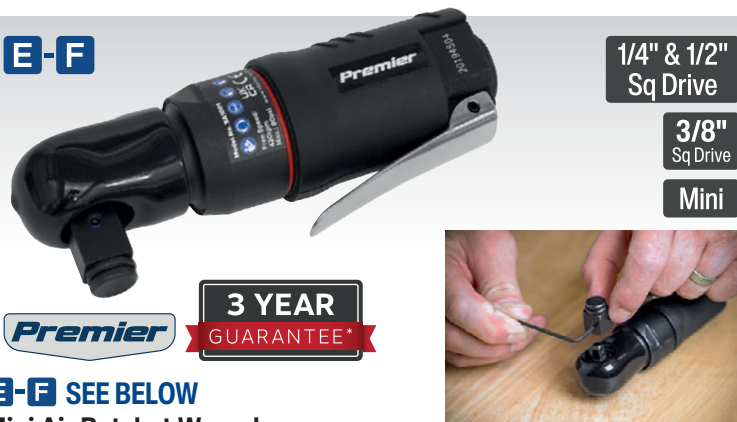
C-D SEE BELOW

Compact Air Ratchet Wrenches

Generation Series compact air ratchet wrenches. Contoured handle to insulate user from chill and vibration. Finger operated trigger and textured grip allows added control, even with greasy hands. Ideal for working in engine bays or other places with restricted access.

	C	D
Model No:	GSA634	GSA635
Drive:	1/4"Sq	3/8"Sq
Maximum Torque:	20lb.ft(27Nm)	20lb.ft(27Nm)
Free Speed:	180rpm	180rpm
Air Consumption:	4cfm	4cfm
Operating Pressure:	90psi	90psi
Inlet Size:	1/4"BSP	1/4"BSP
Length:	185mm	185mm
Noise Power/Pressure:	100/89dB(A)	100/89dB(A)
Vibration/Uncertainty:	2.5/1.25m/s ²	2.5/1.25m/s ²
Weight:	0.56kg	0.56kg

E-F

1/4" & 1/2"
Sq Drive3/8"
Sq Drive

Mini

3 YEAR
GUARANTEE*

E-F SEE BELOW

Mini Air Ratchet Wrenches

Mini compact air tools designed to suit the professional. Lightweight and versatile makes working in tight areas such as engine bays quick and easy. Features a textured finish to ensure a good grip. Model No. SA1001 includes a 1/2"Sq Drive adaptor.

	E	F
Model No:	SA1001	SA1002
Drive:	1/4" & 1/2"Sq	3/8"Sq
Maximum Torque:	25lb.ft(34Nm)	25lb.ft(34Nm)
Free Speed:	420rpm	420rpm
Air Consumption:	8.5cfm	8.5cfm
Operating Pressure:	80psi	80psi
Inlet Size:	1/4"BSP	1/4"BSP
Length:	120mm	120mm
Noise Power/Pressure:	91/80dB(A)	91/80dB(A)
Vibration/Uncertainty:	0.996/0.594m/s ²	0.996/0.594m/s ²
Weight:	0.41kg	0.41kg

G-H

1/4" or 3/8"
Sq Drive

Compact

Composite

3 YEAR
GUARANTEE*

G-H SEE BELOW

Compact Air Ratchet Wrenches

Composite cover moulded around lightweight aluminium alloy housing reduces effects of chill on operator's hands and provides added control. Air motor with quality bearings for smooth and powerful operation. Exhaust outlet adjusts 360°, keeping airflow away from operator. Compact design is ideal for working around engines where space is limited. Features twist-reverse action and trigger operated power control. Hardened gear and yoke assembly ensures suitability for the professional workshop.

	G	H
Model No:	SA630	SA631
Drive:	1/4"Sq	3/8"Sq
Maximum Torque:	25lb.ft(34Nm)	25lb.ft(34Nm)
Free Speed:	250rpm	250rpm
Air Consumption:	3cfm	3cfm
Operating Pressure:	90psi	90psi
Inlet Size:	1/4"BSP	1/4"BSP
Length:	197mm	197mm
Noise Power/Pressure:	86/83dB(A)	86/83dB(A)
Vibration/Uncertainty:	0.448/0.224m/s ²	0.448/0.224m/s ²
Weight:	0.6kg	0.6kg

For our full range of Oil Free & Direct Drive Compressors,
see pages 770 to 775.

A-B

3/8" or 1/2" Sq Drive



A-B SEE BELOW
Air Ratchet Wrenches

Air powered ratchets with hardened steel anvil and twist-reverse mechanism. Trigger operated power control. Suitable for use in the engine bay where there is limited space for hand operated ratchets.

	A	B
Model No:	SA20/S	SA21/S
Drive:	3/8" Sq	1/2" Sq
Maximum Torque:	45lb.ft(61Nm)	45lb.ft(61Nm)
Free Speed:	150rpm	150rpm
Air Consumption:	5cfm	5cfm
Operating Pressure:	90psi	90psi
Inlet Size:	1/4" BSP	1/4" BSP
Length:	265mm	265mm
Weight:	1.2kg	1.2kg
Noise Power/Pressure:	106/95dB(A)	106/95dB(A)
Vibration/Uncertainty:	2.9/1.45m/s ²	2.9/1.45m/s ²

C-D Generation

3/8" or 1/2" Sq Drive



C-D SEE BELOW
Air Ratchet Wrenches

Generation Series air ratchet wrenches. Contoured handle insulates user from chill and vibration. Finger operated trigger and textured grip allows added control, even with greasy hands. Low noise exhaust adjusts 360°, keeping airflow away from operator.

	C	D
Model No:	GSA20	GSA21
Drive:	3/8" Sq	1/2" Sq
Maximum Torque:	45lb.ft(61Nm)	45lb.ft(61Nm)
Free Speed:	150rpm	150rpm
Air Consumption:	5cfm	5cfm
Operating Pressure:	90psi	90psi
Inlet Size:	1/4" BSP	1/4" BSP
Length:	280mm	280mm
Weight:	1.2kg	1.2kg
Noise Power/Pressure:	99/88dB(A)	99/88dB(A)
Vibration/Uncertainty:	1.7/0.85m/s ²	1.7/0.85m/s ²

E-F

3/8" or 1/2" Composite Drive



360° Directional Exhaust



Built-in Adjustable Air Regulator

E-F SEE BELOW
Air Ratchet Wrenches

Composite cover moulded around lightweight aluminium alloy housing reduces effects of chill on operator's hands and provides added control. Air motor with quality bearings for smooth and powerful operation. Exhaust outlet adjusts 360°, keeping airflow away from operator. Features twist-reverse action and trigger operated power control. Hardened gear and yoke assembly ensures suitability for the professional workshop.

	E	F
Model No:	SA607	SA608
Drive:	3/8" Sq	1/2" Sq
Maximum Torque:	50lb.ft(68Nm)	50lb.ft(68Nm)
Free Speed:	200rpm	200rpm
Air Consumption:	4cfm	4cfm
Operating Pressure:	90psi	90psi
Inlet Size:	1/4" BSP	1/4" BSP
Length:	265mm	265mm
Weight:	1.3kg	1.3kg
Noise Power/Pressure:	85/83dB(A)	84/83dB(A)
Vibration/Uncertainty:	0.44/0.22m/s ²	0.44/0.22m/s ²

G Generation

1/2" Sq Drive



G GSA21KIT
1/2" Sq Drive Air Ratchet Wrench Kit

Comprehensive air ratchet kit. Includes Model No. GSA21 Generation Series Ratchet Wrench featuring contoured soft grip handle and 360° directional exhaust. Includes a selection of WallDrive® impact sockets, extension bars and driver bits. Supplied in storage case.

Contents: Air Ratchet Wrench; Model No. GSA21 - 1/2" Sq Drive, WallDrive® Impact Sockets; 9, 10, 11, 13, 14, 17, 19mm, DuoMetric® Coverage; 7/16", 3/4", 75mm Extension Bar, 75mm Bit Holder, Driver Bits; Slotted - 5.5mm, Phillips - #2, #3, Universal Joint, Oil Container

Drive:	1/2" Sq
Maximum Torque:	45lb.ft(61Nm)
Free Speed:	150rpm
Air Consumption:	5cfm
Operating Pressure:	90psi
Inlet Size:	1/4" BSP
Length:	280mm
Weight:	1.2kg
Noise Power/Pressure:	99/88dB(A)
Vibration/Uncertainty:	1.7/0.85m/s ²

A

Reversible



A SA58

Pistol Grip Air Screwdriver

Pistol grip style, air operated screwdriver with reverse control. Positive clutch gives up to 115lb.in of torque. Suitable for assembly/dismantling and general production work. Features 1/4" Hex quick release chuck for fast bit changes.

D

Generation

Ø10mm



D GSA232

Ø10mm Straight Air Drill with Keyless Chuck

Textured grip and lightweight aluminium alloy housing provide comfort and control. Powerful air motor provides smooth operation under load. Exhaust outlet adjusts 360°, keeping airflow away from operator. Fitted with safety release trigger control to prevent accidental operation. Fitted with Ø10mm Jacobs keyless chuck for fast bit changes.

B

Premier

Reversible

Composite



3 YEAR

GUARANTEE*

B SA623

Composite Mini Air Screwdriver

Compact design is ideal for accessing work areas where space is limited. Composite lightweight housing reduces effects of chill on operator's hands. Fully reversible with thumb control on side of motor housing. Air motor with quality bearings for smooth and powerful operation. Features 1/4" Hex quick release chuck for fast bit changes. Suitable for the professional workshop.

E

Premier

Ø10mm

Composite



E SA622

Ø10mm Straight Air Drill with Keyless Chuck

Composite cover moulded around lightweight aluminium alloy housing reduces effects of chill on operator's hands and provides added control. Air motor with quality bearings for smooth and powerful operation. Exhaust outlet adjusts 360°, keeping airflow away from operator. Safety trigger prevents inadvertent operation. Fitted with Ø10mm Jacobs keyless chuck for fast bit changes. Suitable for the professional workshop.

3 YEAR

GUARANTEE*

C

Premier

Ø6mm

Mini



C SA1007

Ø6mm Mini Air Drill

Textured finish to ensure a good grip. Mini design for working in confined areas, ideal for working around engines where space is limited. Powerful 6000rpm mini drill with Ø6mm chuck. Safety trigger prevents inadvertent operation. Suitable for professional workshop use. Supplied with chuck key.

3 YEAR

GUARANTEE*

F

NEW

Premier



F AK8280

44pc Impact Grade Power Tool Bit Set

For full details, see page 201.



	A	B	C	D	E
Model No:	SA58	SA623	SA1007	GSA232	SA622
Chuck Size:	1/4" Hex Quick Release Type	1/4" Hex Quick Release Type	Ø6mm	Ø10mm	Ø10mm
Free Speed:	1500rpm	1100rpm	6000rpm	2500rpm	2500rpm
Air Consumption:	4cfm	3cfm	8.5cfm	4cfm	4cfm
Operating Pressure:	90psi	90psi	80psi	90psi	90psi
Inlet Size:	1/4" BSP	1/4" BSP	1/4" BSP	1/4" BSP	1/4" BSP
Noise Power/Pressure:	102/91dB(A)	92/81dB(A)	101/90dB(A)	104/93dB(A)	103/92dB(A)
Vibration/Uncertainty:	3.27/1.5m/s ²	4.89/2.44m/s ²	0.46/0.541m/s ²	2.5/1.25m/s ²	0.49/0.54m/s ²
Weight:	1.2kg	0.7kg	0.44kg	0.95kg	1kg

G

1-10mm

HSS
M2

G AK4705

19pc HSS Tri-Point M2 Drill Bit Set

For full details, see page 901.

Contents: Ø1, 1.5, 2, 2.5, 3, 3.5, 4, 4.5, 5, 5.5, 6, 6.5, 7, 7.5, 8, 8.5, 9, 9.5, 10mm

H

1-13mm

HSS
M2

H AK4706

25pc HSS Tri-Point M2 Drill Bit Set

For full details, see page 901.

Contents: Ø1, 1.5, 2, 2.5, 3, 3.5, 4, 4.5, 5, 5.5, 6, 6.5, 7, 7.5, 8, 8.5, 9, 9.5, 10, 10.5, 11, 11.5, 12, 12.5, 13mm

I



I PTFE1210

PTFE Thread Sealing Tape - Pack of 10

For full details, see page 1107.

Length: 12m
Width: 12mm



A SA1008
Ø6mm Mini Air Angle Drill

Contoured composite handle reduces effects of chill and vibration. Mini design for working in confined areas, ideal for working around engines where space is limited. Powerful 4500rpm mini drill with Ø6mm chuck. Safety trigger prevents inadvertent operation. Suitable for professional workshop use. Supplied with chuck key.



B SA26
Ø10mm Reversible Air Angle Drill

Right angle air drill with 90° planetary gearbox. Ideal for drilling in hard-to-reach areas where normal drills will not fit. Push-button reverse feature suitable for driving fixings. Supplied with Ø10mm chuck and key.



C GSA231
Ø10mm Air Angle Drill with Keyless Chuck

Contoured composite handle reduces effects of chill on operator's hands, provides added control and helps reduce vibration. 90° Angle is ideal for drilling in hard-to-reach areas. Directional, low noise air exhaust can be rotated 360° giving operator added protection. Fitted with safety trigger to prevent inadvertent operation. Supplied with Ø10mm Jacobs keyless chuck for fast bit changes.



D SA24
Ø10mm Reversible Air Drill

Polished aluminium housing and planetary gear drive assembly. Fitted with Ø10mm chuck and supplied with chuck key. Reverse action suitable for driving fixings. Suitable for general workshop use.



E SA241
Ø10mm Reversible Air Drill with Keyless Chuck

Polished aluminium housing and planetary gear drive assembly. Fitted with Ø10mm Jacobs keyless chuck. Reverse action suitable for driving fixings. Suitable for general workshop use.



F SA27
Ø13mm Reversible Air Drill

Powerful drill with polished aluminium housing, planetary gear drive assembly and Ø13mm Jacobs keyless chuck. Fitted with flip reverse control and supplied with side handle. Suitable for heavy workshop use.



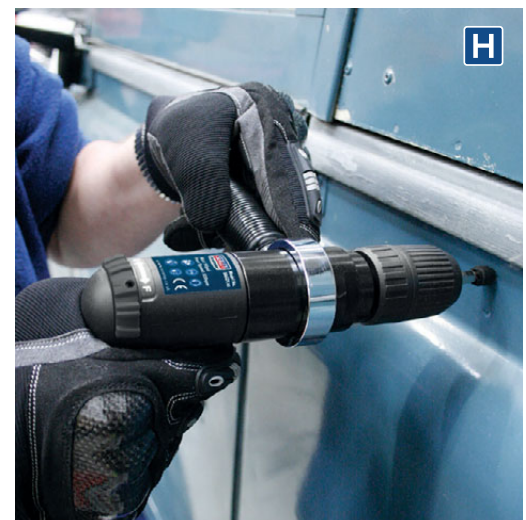
G SA620
Ø10mm Composite Reversible Air Pistol Drill with Keyless Chuck

Composite lightweight moulded housing reduces effects of chill on operator's hands. Fully reversible with thumb control set above motor housing. Air motor with quality bearings for smooth and powerful operation. Handle exhaust with built-in muffler reduces noise level. Fitted with Ø10mm Jacobs keyless chuck for fast bit changes. Suitable for the professional workshop.



H SA621
Ø13mm Composite Reversible Air Drill with Keyless Chuck

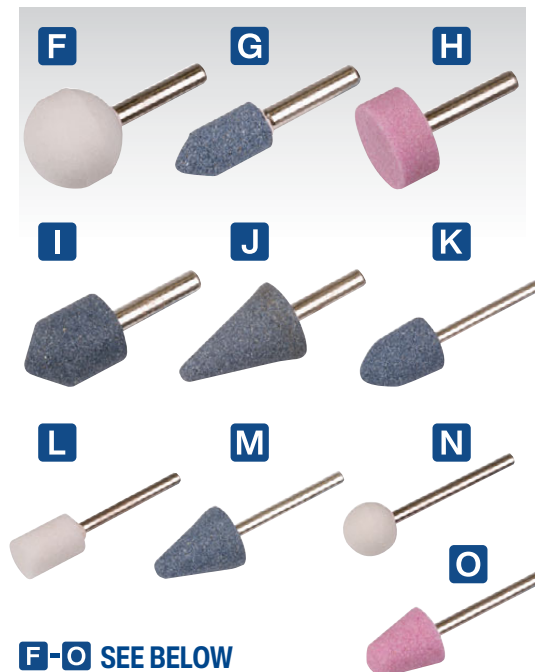
Composite lightweight moulded housing reduces effects of chill on operator's hands. Fully reversible with thumb control set above motor housing. Air motor with quality bearings for smooth and powerful operation. Handle exhaust with built-in muffler reduces noise level. Fitted with Ø13mm Jacobs keyless chuck for fast bit changes. Supplied with side handle for added comfort and control. Suitable for the professional workshop.



	A	B	C	D	E	F	G	H
Model No:	SA1008	SA26	GSA231	SA24	SA241	SA27	SA620	SA621
Chuck Size:	Ø6mm	Ø10mm	Ø10mm	Ø10mm	Ø10mm	Ø13mm	Ø10mm	Ø13mm
Free Speed:	4500rpm	1500rpm	15000rpm	1800rpm	1800rpm	700rpm	1800rpm	800rpm
Air Consumption:	14cfm	6cfm	4cfm	4cfm	4cfm	7cfm	4cfm	4cfm
Operating Pressure:	80psi	90psi	90psi	90psi	90psi	90psi	90psi	90psi
Inlet Size:	1/4"BSP	1/4"BSP	1/4"BSP	1/4"BSP	1/4"BSP	1/4"BSP	1/4"BSP	1/4"BSP
Noise Power/Pressure:	101/90dB(A)	101/90dB(A)	104/93dB(A)	100/91dB(A)	100/91dB(A)	100/91dB(A)	91/80dB(A)	91/80dB(A)
Vibration/Uncertainty:	0.46/0.541m/s ²	0.86/1.5m/s ²	8.2/3.28m/s ²	0.89/1.5m/s ²	0.89/1.5m/s ²	0.89/1.5m/s ²	3.3/1.8m/s ²	3.3/1.8m/s ²
Weight:	0.6kg	1.1kg	0.7kg	1.1kg	1.1kg	1.4kg	1.15kg	1.4kg

A-E SEE BELOW**Air Die Grinders**

Model No's SA671 and SA674 feature traditional design with proven reliability. Generation Series models feature some of the best design innovations in air tools with contoured handles, insulating user from chill and vibration. Directional, low noise air exhaust can be rotated 360°, giving operator added protection. Model No. GSA672 features long reach shank with an overall length of 240mm.

**F-O SEE BELOW****Mounted Wheels**

Abrasive heads suitable for use with die grinders and drills. Supplied individually.

Model No:	Head Diameter:	Shaft Diameter:	Shaft Length:	Overall Length:
F MW01	Ø25mm	Ø6mm	25mm	52mm
G MW02	Ø13mm	Ø6mm	25mm	53mm
H MW03	Ø25mm	Ø6mm	12mm	44mm
I MW04	Ø19mm	Ø6mm	26mm	53mm
J MW05	Ø25mm	Ø6mm	38mm	65mm
K MW06	Ø13mm	Ø3mm	18mm	48mm
L MW07	Ø10mm	Ø3mm	15mm	44mm
M MW08	Ø15mm	Ø3mm	19mm	48mm
N MW09	Ø12mm	Ø3mm	10mm	42mm
O MW10	Ø13mm	Ø3mm	16mm	45mm

	A	B	C	D	E
Model No:	SA671	SA674	GSA671	GSA674	GSA672
Configuration:	Straight - Midi	90° - Midi	Straight - Midi	90° - Midi	Straight - Midi
Collet Size:	Ø3mm, Ø6mm	Ø6mm	Ø3mm, Ø6mm	Ø6mm	Ø6mm
No-Load Speed:	22000rpm	20000rpm	22000rpm	20000rpm	20000rpm
Air Consumption:	7cfm	4cfm	7cfm	4cfm	4cfm
Operating Pressure:	90psi	90psi	90psi	90psi	90psi
Inlet Size:	1/4" BSP	1/4" BSP	1/4" BSP	1/4" BSP	1/4" BSP
Length:	170mm	160mm	165mm	170mm	240mm
Noise Power/Pressure:	100/89dB(A)	101/90dB(A)	104/93dB(A)	103/92dB(A)	95/84dB(A)
Vibration/Uncertainty:	1.6/0.8m/s ²	1.7/0.85m/s ²	1.1/0.55m/s ²	1.4/0.7m/s ²	1.8/0.9m/s ²
Weight:	0.6kg	0.54kg	0.48kg	0.54kg	0.6kg

**P-R SEE BELOW****Spring Balancers**

Designed to support the weight of the tool, reducing operator fatigue and keeps the work area free of clutter. Simple clip-on tool attachment fitted to multi-strand steel cable. Fine load adjustment with hand wheel.

Model No:	Weight Range:	Cable Length:
P ATB0615	0.5-1.5kg	1.5m
Q ATB1530	1.5-3kg	1.5m
R ATB3050	3-5kg	1.35m



Premier
3 YEAR
GUARANTEE*

Premier
3 YEAR
GUARANTEE*

A-B SEE BELOW
Mini Air Die Grinders

Mini compact air tools designed to suit the professional. Lightweight and versatile making working in tight areas such as engine bays quick and easy. Features a textured finish to ensure a good grip.

	A	B
Model No:	SA1004	SA1005
Configuration:	Straight - Mini	90° - Mini
Collet Size:	Ø6mm	Ø6mm
Free Speed:	25000rpm	16500rpm
Air Consumption:	11.3cfm	12cfm
Operating Pressure:	80psi	80psi
Inlet Size:	1/4"BSP	1/4"BSP
Length:	123mm	125mm
Noise Power/Pressure:	97/86dB(A)	97/86dB(A)
Vibration/Uncertainty:	1.079/ 0.602m/s ²	1.079/ 0.602m/s ²
Weight:	0.34kg	0.39kg

C-G SEE BELOW
Air Die Grinders

Composite cover moulded around lightweight aluminium alloy housing, reduces effects of chill on operator's hands and provides added control. Air motor with quality bearings for smooth and powerful operation. Exhaust outlet adjusts 360°, keeping airflow away from operator. Safety trigger prevents inadvertent operation. Ideal for re-shaping, deburring and smoothing off rough edges on castings. Suitable for the professional workshop. Available with 'Midi' type body or for added power 'Maxi' bodied versions. Model No. SA656 features long reach shank with an overall length of 260mm.

	C	D	E	F	G
Model No:	SA652	SA653	SA654	SA655	SA656
Configuration:	Straight - Midi	90° - Midi	Straight - Maxi	90° - Maxi	Straight - Maxi
Collet Size:	Ø6mm	Ø6mm	Ø6mm	Ø6mm	Ø6mm
Free Speed:	25000rpm	22000rpm	22000rpm	18000rpm	22000rpm
Air Consumption:	3cfm	3cfm	4cfm	4cfm	4cfm
Operating Pressure:	90psi	90psi	90psi	90psi	90psi
Inlet Size:	1/4"BSP	1/4"BSP	1/4"BSP	1/4"BSP	1/4"BSP
Length:	155mm	160mm	170mm	175mm	260mm
Noise Power/Pressure:	95/84dB(A)	95/84dB(A)	95/84dB(A)	99/89dB(A)	95/84dB(A)
Vibration/Uncertainty:	1.25/0.61m/s ²	1.25/0.61m/s ²	1.25/0.61m/s ²	5.34/0.25m/s ²	1.25/0.61m/s ²
Weight:	0.5kg	0.5kg	0.7kg	0.8kg	0.7kg



H SA96
Air Engraver

Composite bodied high quality tool with Tungsten Carbide tip for engraving metals and plastics. Suitable for security marking loan products, applying service date information to tools and for marking components prior to storage. Supplied with 1.5m of small-bore hosing and 1/4"BSP adaptor.

Free Speed:	3000spm
Air Consumption:	4cfm
Operating Pressure:	60psi
Inlet Size:	1/4"BSP
Replacement Tungsten Tip:	SA96/03
Noise Power/Pressure:	84/73dB(A)
Vibration/Uncertainty:	3.89/0.88m/s ²
Weight:	0.2kg



I SA673
Air Micro Die Grinder

Air motor with quality bearings for smooth and powerful operation. Shrouded exhaust gives quieter operation. Suitable for professional users. Supplied with spanners and grinding points, air tool oil, in-line oiler and quick connector.

Collet Diameter:	Ø3mm(1/8")
Free Speed:	58000rpm
Air Consumption:	3cfm
Operating Pressure:	90psi
Noise Power/Pressure:	82/71dB(A)
Vibration/Uncertainty:	1.56/0.78m/s ²
Contents:	Air Micro Grinder, Grinding Points (x10), Air Tool Oil, In-line Oiler, Quick Connector, Chuck Wrenches
Weight:	0.71kg

A



Ø50mm & Ø75mm

A GSA674K**42pc Air Angle Die Grinding/Sanding Kit**

Suitable for die grinding, sanding or panel preparation. Includes our Generation Series 90° Air Angle Die Grinder (Model No. GSA674), which features a safety trigger, contoured rubber handle and 360° rotating exhaust. Supplied in a storage case with a range of die grinding points, sanding rolls and Ø50/75mm preparation pads. Replacement components readily available.

Pad Sizes:	Ø50, 75mm
Thread Size:	1/4"UNC
Collet Diameters:	Ø3mm, 6mm
Free Speed:	20000rpm
Air Consumption:	4cfm
Operating Pressure:	90psi
Inlet Size:	1/4"BSP
Noise Power/Pressure:	105/91dB(A)
Vibration/Uncertainty:	1.4/0.7m/s ²
Weight:	0.5kg

Generation

B

Premier

Ø50mm

**3 YEAR
GUARANTEE*****B SA720****35pc Ø50mm Mini Air Sander Kit**

Designed for smart repair and spot refinishing. 90° Handle configuration with double finger trigger allows unit to fit snugly into palm for added control. Rubber finger cover reduces effects of chill. Handle exhaust reduces noise and surface contamination. Fitted with variable speed control. Includes a selection of Ø50mm discs and pads with industry standard fitting. Supplied in storage case.

Contents:	Ø50mm Backing Pad, Sanding Discs; #60, #80, #120 Grit (10 of each), Surface Prep Pads; Fine, Medium, Coarse (1 of each)	
Pad Size:	Ø50mm	
Thread Size:	1/4"UNC	
Free Speed:	15000rpm	
Air Consumption:	4cfm	
Operating Pressure:	90psi	
Inlet Size:	1/4"BSP	
Noise Power/Pressure:	97/86dB(A)	
Vibration/Uncertainty:	3.76/0.1m/s ²	
Weight:	0.8kg	

C

**C SA67****16pc Air Die Grinder Kit**

Includes Model No. SA671 and supplied with a selection of popular sized grinding points, two spanners and storage case.

Collet Diameters:	Ø3, Ø6mm
Free Speed:	22000rpm
Air Consumption:	4cfm
Operating Pressure:	90psi
Inlet Size:	1/4"BSP
Length:	170mm
Configuration:	Straight - Midi
Noise Power/Pressure:	100/89dB(A)
Vibration/Uncertainty:	1.6/0.8m/s ²
Weight:	1.26kg

D

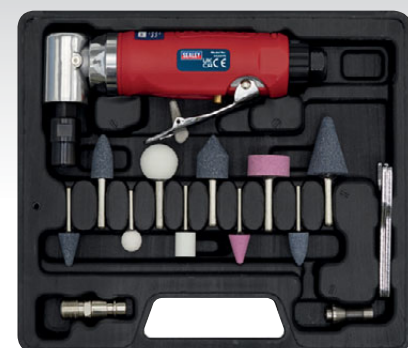
**D GSA67****15pc Air Die Grinder Kit**

Includes Model No. GSA671 and supplied with set of grinding points, chuck spanners and storage case.

Collet Diameters:	Ø3mm, Ø6mm
Free Speed:	22000rpm
Air Consumption:	7cfm
Operating Pressure:	90psi
Inlet Size:	1/4"BSP
Length:	165mm
Configuration:	Straight - Midi
Noise Power/Pressure:	104/93dB(A)
Vibration/Uncertainty:	1.1/2.15m/s ²
Weight:	1.18kg

Generation

E

**E GSA675****15pc 90° Angle Air Die Grinder Kit**

Includes Model No. GSA674 and supplied with set of grinding points, chuck spanners and storage case.

Collet Diameters:	Ø3mm, Ø6mm
Free Speed:	20000rpm
Air Consumption:	4cfm
Operating Pressure:	90psi
Inlet Size:	1/4"BSP
Length:	170mm
Configuration:	90° - Midi
Noise Power/Pressure:	103/92dB(A)
Vibration/Uncertainty:	1.4/0.7m/s ²
Weight:	1.7kg

Generation



Ø100mm

Premier

3 YEAR GUARANTEE*

A SA695
4pc Smart Eraser Air Tool Kit

Complete kit for a variety of body preparation tasks. Includes pinstripe removal pad, abrasive wheel and two wire wheels. Powered by specifically designed air tool, featuring two handles for maximum control during use. Supplied in storage case. Suitable for the professional workshop. All pads/wheels available separately.

Contents:	Pinstripe Removing Pad (x1), Abrasive Wheel (x1), Wire Wheel (Straight) (x1), Wire Wheel (Angled) (x1)
Thread Size:	5/16"UNF
Free Speed:	3600rpm
Air Consumption:	10cfm
Operating Pressure:	90psi
Inlet Size:	1/4"BSP
Noise Power/Pressure:	98/87dB(A)
Vibration/Uncertainty:	0.5/0.55m/s ²
Weight:	1.2kg
Replacement Pad:	SA95PXPLUS
Replacement Abrasive Wheel:	SA695A
Replacement Wire Wheel:	SA695WS (Straight), SA695WA (Angled)



3 YEAR GUARANTEE*

Ø88mm

Composite

B SA95
Air Adhesive Pinstripe Removal Tool

Composite cover moulded around lightweight aluminium alloy housing reduces effects of chill on operator's hands and provides added control. Air motor with quality bearings for smooth and powerful operation. Exhaust outlet adjusts 360° keeping airflow away from operator. Ideal for removing pinstripes or double-sided tape from panel prior to refinishing. Suitable for the professional workshop.

Pad Size:	Ø88 x 15mm
Thread Size:	5/16"UNF
Free Speed:	2500rpm
Air Consumption:	4cfm
Operating Pressure:	90psi
Inlet Size:	1/4"BSP
Noise Power/Pressure:	103/92dB(A)
Vibration/Uncertainty:	0.49/0.54m/s ²
Weight:	1kg
Replacement Pad:	SA95/PX



C SA695A
Polycarbide Abrasive Wheel for SA695

Abrasive wheel for Model No. SA695 Smart Eraser Kit.

Size:	Ø100 x 28mm
Thread Size:	5/16"UNF



D SA695WS
Straight Wire Wheel for SA695

Straight wire wheel for Model No. SA695 Smart Eraser Kit.

Size:	Ø100 x 25mm
--------------	-------------



E SA695WA
Angled Wire Wheel for SA695

Angled wire wheel for Model No. SA695 Smart Eraser Kit.

Size:	Ø100 x 25mm
--------------	-------------



F SA95PXPLUS
Deluxe Stripe Removing Pad for SA695 & SA95

'Toothed' cutting edges rapidly remove pinstripes or double-sided tape prior to refinishing. Large diameter and increased width ensure extended life and make this pad ideal for the busy bodyshop. Suitable for use with Model No's SA95 and SA695.

Pad Size:	Ø100 x 27mm
Thread Size:	5/16"UNF
Minimum Diameter:	Ø50mm
Maximum Speed:	4000rpm



G SA95/PX
Stripe Removing Pad for SA95

Suitable for use with Model No. SA95, for removing pinstripes or double-sided tape from panel work prior to refinishing.

Pad Size:	Ø88 x 16mm
Thread Size:	5/16"UNF
Minimum Diameter:	Ø38mm
Maximum Speed:	4000rpm

A



10mm

Siegen

A S01046**Air Belt Sander**

Aluminium housing with articulated sanding arm. Features belt tracking control, heavy-duty nose roller and one-handed trigger operation. Suitable for sanding otherwise inaccessible areas such as around door-shuts. Supplied with three belts. Replacement belts readily available, see **F**.

Belt Size:	10 x 330mm
Air Consumption:	7cfm
Operating Pressure:	90psi
Air Inlet Size:	1/4" BSP
Noise Power/Pressure:	90/79dB(A)
Vibration/Uncertainty:	1.1/0.13m/s ²
Weight:	0.8kg

B



10mm

B SA35**Air Belt Sander**

Aluminium housing with articulated sanding arm. Features belt tracking control, heavy-duty nose roller and one-handed trigger operation. Suitable for sanding otherwise inaccessible areas such as around door-shuts. Supplied with three belts. Replacement belts readily available, see **F**.

Belt Size:	10 x 330mm
Air Consumption:	7cfm
Operating Pressure:	90psi
Air Inlet Size:	1/4" BSP
Noise Power/Pressure:	97/86dB(A)
Vibration/Uncertainty:	0.52/0.55m/s ²
Weight:	0.8kg

C



10mm

Premier

3 YEAR
GUARANTEE***C SA635****Air Belt Sander**

Aluminium housing with articulated sanding arm. Features belt tracking control, heavy-duty nose roller and one-handed trigger operation. Composite handle with exhaust reduces chill and noise level. Suitable for sanding otherwise inaccessible areas such as around door-shuts. Supplied with three belts. Replacement belts readily available, see **F**.

Belt Size:	10 x 330mm
Air Consumption:	2cfm
Operating Pressure:	90psi
Air Inlet Size:	1/4" BSP
Noise Power/Pressure:	92/81dB(A)
Vibration/Uncertainty:	0.52/0.55m/s ²
Weight:	0.8kg

D



20mm

D SA354**Air Belt Sander**

Articulated sanding arm with spring loading for easy belt changes. Features belt tracking control, heavy-duty nose roller and one-handed trigger operation. Handle exhaust helps reduce noise level. Suitable for sanding otherwise inaccessible areas and extra width of belt makes tool suitable for welding work too. Replacement belts readily available, see **F**.

Belt Size:	20 x 520mm
Air Consumption:	15cfm
Operating Pressure:	90psi
Air Inlet Size:	1/4" BSP
Noise Power/Pressure:	101/90dB(A)
Vibration/Uncertainty:	4.64/2.32m/s ²
Weight:	1.4kg

B



E



20mm

Premier

3 YEAR
GUARANTEE***E SA355****Air Belt Sander**

Aluminium housing with articulated sanding arm. Features belt tracking control, heavy-duty nose roller and one-handed trigger operation. Composite handle with exhaust reduces chill and noise level. Suitable for sanding otherwise inaccessible areas such as around door shuts. Extra width of belt makes tool suitable for welding work too. Replacement belts readily available, see **F**.

Belt Size:	20 x 520mm
Air Consumption:	15cfm
Operating Pressure:	90psi
Air Inlet Size:	1/4" BSP
Noise Power/Pressure:	97/86dB(A)
Vibration/Uncertainty:	0.89/0.58m/s ²
Weight:	1.3kg

F

Replacement Belts for **A-E**.**F SEE BELOW****Sanding Belts - Packs of 5**

Aluminium oxide, super-flexible belts for Sealey and other belt sanders. Supplied in packs of five.

Model No:	Nominal Size:	Grades:
SA35/B40G	10 x 330mm	40 Grit
SA35/B60G	10 x 330mm	60 Grit
SA35/B80G	10 x 330mm	80 Grit
SA35/B100G	10 x 330mm	100 Grit
SA35/B120G	10 x 330mm	120 Grit
SA355/B60G	20 x 520mm	60 Grit
SA355/B80G	20 x 520mm	80 Grit
SA355/B100G	20 x 520mm	100 Grit
SA355/B120G	20 x 520mm	120 Grit
SB009	30 x 540mm	40 Grit
SB0010	30 x 540mm	60 Grit
SB0011	30 x 540mm	80 Grit
SB008	30 x 540mm	100 Grit

E





050mm Sander

A SA19/S
050mm Air Sander

Lightweight and versatile sanding tool suitable for use with sanding preparation pads or 3M® bristle pads and 3M® backing pads. 97° Angle head with gearless drive gives optimum performance. Fitted with safety release trigger control and variable speed adjustment. Supplied with 050mm pad and spanner.

Pad Size:	050mm
Thread Size:	1/4"UNC
Free Speed:	18000rpm
Air Consumption:	10cfm
Operating Pressure:	90psi
Inlet Size:	1/4"BSP
Noise Power/Pressure:	98/87dB(A)
Vibration/Uncertainty:	2.29/0.72m/s ²
Weight:	0.6kg



050mm Sander Mini



3 YEAR GUARANTEE*

D SA1003
050mm Mini Air Sander

Contoured composite handle reduces effects of chill and vibration. Mini design for working in confined areas, ideal for working around engines where space is limited. Lightweight and versatile sanding tool suitable for use with discs and pads with industry standard fitting. Fitted with safety release trigger control and variable speed adjustment. Features rear exhaust with baffle for reduced noise level and safety throttle lever to stop accidental operation. Suitable for professional workshop use. Includes backing pad and wrenches.

Pad Size:	050mm
Thread Size:	M6 x 1mm
Free Speed:	16500rpm
Air Consumption:	12cfm
Operating Pressure:	80psi
Inlet Size:	1/4"BSP
Noise Power/Pressure:	97/86dB(A)
Vibration/Uncertainty:	0.236/0.518m/s ²
Weight:	0.385kg



050mm Sander

B SA70
050mm Air Orbital Sander

Lightweight sanding tool with aluminium housing suitable for use with 050mm sanding discs. Air motor with quality bearings for smooth and powerful operation. Fitted with safety trigger to prevent inadvertent operation and rear exhaust for quiet operation. Supplied with 050mm pad and spanner.

Pad Size:	050mm
Thread Size:	M6 x 1mm
Free Speed:	15000rpm
Orbit Size:	03mm
Air Consumption:	4cfm
Operating Pressure:	90psi
Inlet Size:	1/4"BSP
Noise Power/Pressure:	107/96dB(A)
Vibration/Uncertainty:	11.8/4.72m/s ²
Weight:	0.6kg



075mm Sander Polisher Composite



3 YEAR GUARANTEE*

E SEE BELOW
075mm Premier Composite Mini Air Tools

Composite lightweight housing reduces effects of chill on operator's hands. Adjustable speed control on side of motor housing. Air motor with quality bearings for smooth and powerful operation. Model No. SA721 is ideal for sanding down smaller areas prior to smart repairs or spot refinishing. Model No. SA722 features integral gear system that reduces output speed, still maintaining a high torque level. Both models are supplied with 075mm hook-and-loop pad.

Model No:	SA721	SA722
Description:	Orbit Sander	Polisher
Pad Size:	075mm	075mm
Thread Size:	5/16"UNF	5/16"UNF
Free Speed:	15000rpm	2000-6000rpm
Orbit Size:	03mm	n/a
Air Consumption:	3cfm	3cfm
Operating Pressure:	90psi	90psi
Inlet Size:	1/4"BSP	1/4"BSP
Noise Power/Pressure:	88.3/77.2dB(A)	89.4/78.4dB(A)
Vibration/Uncertainty:	4.25/0.85m/s ²	2.5/1m/s ²
Weight:	0.5kg	0.6kg



050mm Sander



C GSA70
050mm Air Orbital Sander

Composite cover moulded around lightweight aluminium alloy housing reduces effects of chill on operator's hands and provides added control. Air motor with quality bearings for smooth and powerful operation. Fitted with safety release trigger control to prevent accidental operation. Exhaust outlet adjusts 360° keeping airflow away from operator. Supplied with 050mm pad and spanner.

Pad Size:	050mm
Thread Size:	M6 x 1mm
Free Speed:	15000rpm
Orbit Size:	03mm
Air Consumption:	4cfm
Operating Pressure:	90psi
Inlet Size:	1/4"BSP
Noise Power/Pressure:	101/90dB(A)
Vibration/Uncertainty:	4.5/2.25m/s ²
Weight:	0.7kg



075mm Polisher

F GSA722
075mm Air Polisher

Textured grip and lightweight aluminium alloy housing provide comfort and control. Powerful air motor provides smooth operation under load. Supplied with 075mm hook-and-loop pad and spanner. Use with 079mm buffing and polishing heads.

Pad Size:	075mm
Thread Size:	M6 x 1mm
Free Speed:	2500rpm
Air Consumption:	4cfm
Operating Pressure:	90psi
Inlet Size:	1/4"BSP
Noise Power/Pressure:	94/83dB(A)
Vibration/Uncertainty:	4.13/0.90m/s ²
Weight:	0.7kg



SA722 in use.



A



Ø150mm

QUIET
RUNNING

Siegen

A S01044**Ø150mm Air Random Orbital Sander**

Lightweight body with moulded handle, reducing chill effects and providing extra control. Fitted with dual exhaust ports and air control valve. Supplied with Ø150mm hook-and-loop pad. Ideal for the DIY enthusiast and light garage use.

Pad Size:	Ø150mm
Thread Size:	5/16"UNF
Free Speed:	10000rpm
Orbit Size:	Ø5mm
Air Consumption:	4cfm
Operating Pressure:	90psi
Inlet Size:	1/4"BSP
Noise Power/Pressure:	94/83dB(A)
Vibration/Uncertainty:	4.6/2.3m/s ²
Weight:	1.7kg

B



Ø150mm

QUIET
RUNNING**B SA77****Ø150mm Air Random Orbital Sander**

Lightweight, balanced aluminium body with double bearing counter balance assembly and spindle lock device for easy pad removal. Housing fitted with composite cap and internal baffle for quiet operation. Equipped with airflow control valve. Supplied with Ø150mm hook-and-loop backing pad.

Pad Size:	Ø150mm
Thread Size:	5/16"UNF
Free Speed:	10000rpm
Orbit Size:	Ø4.2mm
Air Consumption:	4cfm
Operating Pressure:	90psi
Inlet Size:	1/4"BSP
Noise Power/Pressure:	96/85dB(A)
Vibration/Uncertainty:	41.77/16.7m/s ²
Weight:	1.9kg

C



Ø125mm

20V

C CP20VOS**20V Ø125mm Random Orbital Palm Sander Body Only**

Powerful, cordless, lightweight orbital sander. Durable composite housing with soft grip for added comfort. 3-Speed settings gives control to complete various tasks. Features a self-contained dust extraction port with dust collection bag. Fitted with Ø125mm hook-and-loop backing pad and supplied with two sanding discs. Requires compatible 20V battery and mains charger, sold separately. For full details, see page 850.

D



20V

Lithium
RECHARGEABLE**D CP20VBP2****20V 2Ah Lithium-ion Power Tool Battery for CP20V Series**

For full details, see page 872.

E

Ø150mm



F

Ø150mm

Dust-Free



G

Ø75mm

**E-F SEE BELOW****Ø150mm Air Palm Orbital Sanders**

Polycarbonate outer housing with soft rubber handgrip reduces chill and vibration. Fitted with dual bearings in eccentric assembly to maximize working life. Exhaust muffler helps reduce noise emission. Model No. SA09 features dust-free outlet for use with centralised dust extraction systems. Supplied with Ø150mm hook-and-loop pad.

G GSA003**Ø75mm Air Palm Orbital Sander**

Generation

Variable speed control lever for quick adjustment to suit workpiece. Supplied with hook-and-loop pad.

	E	F	G
Model No:	SA08	SA09	GSA003
Pad Size:	Ø150mm	Ø150mm	Ø75mm
Thread Size:	5/16"UNF	5/16"UNF	5/16"UNF
Free Speed:	10000rpm	10000rpm	11000rpm
Orbit Size:	Ø5mm	Ø5mm	Ø2.5mm
Air Consumption:	13cfm	13cfm	3.5cfm
Operating Pressure:	90psi	90psi	90psi
Inlet Size:	1/4"BSP	1/4"BSP	1/4"BSP
Vacuum Outlet:	n/a	Ø28mm	n/a
Noise Power/ Pressure:	92/81dB(A)	92/81dB(A)	87/76dB(A)
Vibration/ Uncertainty:	5.7/0.54m/s ²	5.7/0.54m/s ²	0.8/0.4m/s ²
Weight:	1kg	1kg	0.65kg



A-C SEE BELOW Ø150mm Dust-Free Ø150mm Dust-Free Self-Contained **Generation**

Ø150mm Air Palm Random Orbital Sanders

Variable speed control lever for quick adjustment to suit workpiece. Model No's GSA04 and GSA05 feature a 360° exhaust muffler to help reduce noise emission and redirect airflow away from operator. Model No. GSA05 features a dust-free outlet for use with centralised dust extraction systems. Model No. GSA06 features a self-generated vacuum with hose and bag. All models supplied with Ø150mm hook-and-loop pad.



D-F SEE BELOW
Air Palm Orbital Sanders

Polycarbonate outer housing with soft rubber handgrip reduces chill and vibration. Features adjustable air regulator for additional control and exhaust muffler to reduce noise emission. Model No. SA801 features dust-free outlet for use with centralised dust extraction systems. All models supplied with hook-and-loop pad.

	A	B	C	D	E	F
Model No:	GSA04	GSA05	GSA06	SA802	SA800	SA801
Pad Size:	Ø150mm	Ø150mm	Ø150mm	Ø75mm	Ø150mm	Ø150mm
Thread Size:	5/16"UNF	5/16"UNF	5/16"UNF	5/16"UNF	5/16"UNF	5/16"UNF
Free Speed:	10500rpm	10500rpm	10500rpm	13000rpm	10000rpm	10000rpm
Orbit Size:	Ø2.5mm	Ø2.5mm	Ø2.5mm	Ø2.5mm	Ø5mm	Ø5mm
Air Consumption:	3cfm	3cfm	3cfm	4cfm	16cfm	16cfm
Operating Pressure:	90psi	90psi	90psi	90psi	90psi	90psi
Inlet Size:	1/4"BSP	1/4"BSP	1/4"BSP	1/4"BSP	1/4"BSP	1/4"BSP
Vacuum Outlet:	n/a	Ø26mm	Ø31.5mm	n/a	n/a	Ø28mm
Noise Power/Pressure:	101/90dB(A)	101/90dB(A)	101/90dB(A)	100/89dB(A)	100/89dB(A)	100/89dB(A)
Vibration/Uncertainty:	4.4/2.2m/s ²	4.4/2.2m/s ²	4.4/2.2m/s ²	5.24/1.01m/s ²	5.24/1.01m/s ²	5.24/1.01m/s ²
Weight:	1kg	1kg	1kg	0.5kg	0.7kg	0.7kg



G-H SEE BELOW
Ø180mm Air Angle Sander & Polisher

Both units have a polished and well balanced aluminium body with two side handle mounting positions. Trigger operated throttle control. Supplied with Ø180mm self-adhesive backing pad.

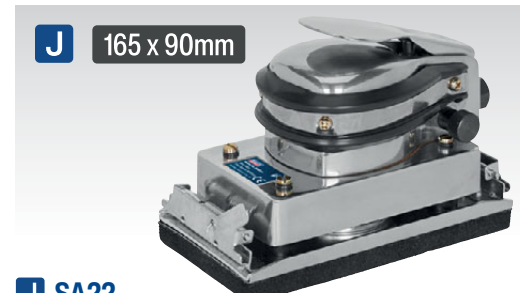
	G	H
Model No:	SA17/S	SA18/S
Type:	Polisher	Sander
Pad Size:	Ø180mm	Ø180mm
Thread Size:	5/8"UNC	5/8"UNC
Free Speed:	2500rpm	4500rpm
Air Consumption:	5.3cfm	7cfm
Operating Pressure:	90psi	90psi
Inlet Size:	1/4"BSP	1/4"BSP
Noise Power/Pressure:	100/89dB(A)	101/90dB(A)
Vibration/Uncertainty:	2.39/ 0.73m/s ²	3.33/ 0.82m/s ²
Weight:	2kg	2kg



I SA32
Twin Piston In-line Air Sander

Twin piston configuration powers base plate on both forward and backward strokes, whilst also reducing vibration for comfortable operation. Well balanced aluminium housing and base plate. Accepts 115mm papers or sheets and is suitable for heavy bodyshop use.

Pad Size:	400 x 70mm
Stroke:	25mm
Free Speed:	2400spm
Air Consumption:	8cfm
Operating Pressure:	90psi
Inlet Size:	1/4"BSP
Noise Power/Pressure:	107/96dB(A)
Vibration/Uncertainty:	8.47/3.38m/s ²
Weight:	3kg



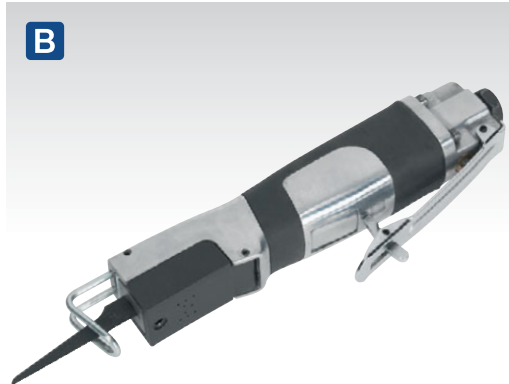
J SA22
Air Operated Flat Bed Sander

Orbital flat bed sander with counter-balanced drive shaft for smooth operation. Palm type trigger with rubber head ring allows comfortable, one-handed operation. Suitable for sanding body panels, wood, metals and plastics, this tool is suitable for 115mm roll papers and uses strong spring clips to attach them to the base plate.

Pad Size:	165 x 90mm
Orbit Size:	Ø5mm
Free Speed:	8000rpm
Air Consumption:	13cfm
Operating Pressure:	90psi
Inlet Size:	1/4"BSP
Noise Power/Pressure:	93/82dB(A)
Vibration/Uncertainty:	16.5/6.6m/s ²
Weight:	1.88kg



A S01045
Reciprocating Air Saw
 Ideal for initial crash repair preparation when quick removal of damaged panels is required. Fitted with safety trigger device to prevent accidental operation. Features adjustable blade guide. Supplied with a starter pack of blades. Suitable for light garage use



B SA342
Reciprocating Air Saw
 Ideal for a variety of bodyshop applications such as cutting panels, exhaust work, sills and chassis members. Fitted with safety trigger device to prevent accidental operation. Features adjustable blade guide. Supplied with a starter pack of blades.



C SA348
Slim Body Reciprocating Air Saw
 Suitable for a variety of bodyshop applications such as cutting through panels, sills and chassis members. Excellent for initial crash repair preparation when quick removal of damaged panels is required. Fitted with safety trigger device. Supplied with a starter pack of blades.



D SA34
Reciprocating Air Saw
 Suitable for a variety of bodyshop applications such as cutting panels, exhaust work, sills and chassis members. Excellent for initial crash repair preparation when quick removal of damaged panels is required. Fitted with safety trigger device to prevent accidental operation. Supplied with a starter pack of blades.

Premier
3 YEAR GUARANTEE*



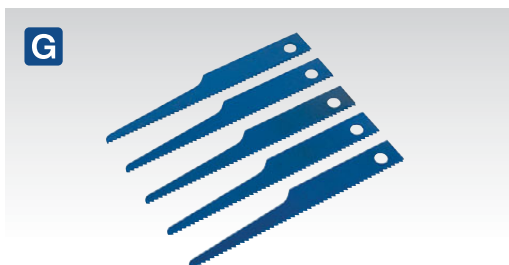
E SA1006
Mini Reciprocating Air Saw
 Textured finish to ensure a good grip. Suitable for a variety of bodyshop applications such as cutting through panels, sills, chassis members etc. Excellent for initial crash repair preparation when quick removal of damaged panels is required. Fitted with safety trigger device. Suitable for the professional workshop. Supplied with starter pack of blades. See page 931 for replacement blades.

Mini
3 YEAR GUARANTEE*



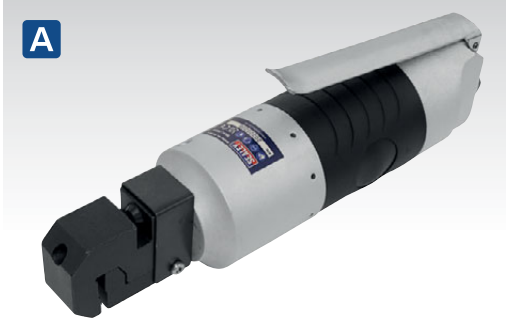
F SA347
Mini Reciprocating Air Saw/Needle File
 Suitable for a variety of bodyshop applications particularly where space is limited. Use as a cutting saw for panels or a file for deburring and shaping metalwork. Fitted with safety trigger device. Supplied with a starter pack of blades and files. See page 931 for replacement blades.

Mini
3 YEAR GUARANTEE*



G SA34/B14
HSS Air Saw Blades
 For full details, see page 931.

	A	B	C	D	E	F
Model No:	S01045	SA342	SA348	SA34	SA1006	SA347
Maximum Cutting Capacity:	2mm (Steel), 2.5mm (Aluminium)	1.5mm (Steel), 1.5mm (Aluminium)	2mm (Steel), 3mm (Aluminium)	2mm (Steel), 2.5mm (Aluminium)	2mm (Steel), 2.5mm (Aluminium)	1.2mm (Steel & Aluminium)
Free Speed:	10000spm	9000spm	9000spm	10000spm	4500spm	7500spm
Stroke:	10mm	10mm	10mm	10mm	7.9mm	5.5mm
Air Consumption:	4cfm	4cfm	3cfm	6cfm	8.5cfm	4cfm
Operating Pressure:	90psi	90psi	90psi	90psi	80psi	90psi
Inlet Size:	1/4"BSP	1/4"BSP	1/4"BSP	1/4"BSP	1/4"BSP	1/4"BSP
Noise Power/ Pressure:	98/87dB(A)	99/88dB(A)	99/88dB(A)	100/89dB(A)	88/77dB(A)	89/78dB(A)
Vibration/ Uncertainty:	17.07/2.32m/s ²	12.166/1.5m/s ²	11.985/1.5m/s ²	27.95/3.26m/s ²	3.359/0.827m/s ²	12.2/1.85m/s ²
Weight:	0.6kg	0.7kg	0.4kg	0.6kg	0.540kg	0.5kg



A SA36
Air Punch/Flange Tool

Suitable for heavy bodyshop use. Aluminium alloy body with steel punch and die. Puts a 10mm flange onto car panel thickness sheet for lap jointing and puts Ø5mm holes in panels for MIG spot-welding.

Operating Pressure:	90psi
Inlet Size:	1/4" BSP
Air Consumption:	2cfm
Noise Power/Pressure:	85/74dB(A)
Vibration/Uncertainty:	0.8/0.57m/s ²
Weight:	1.3kg
Replacement Punch:	SA36.V2-06
Replacement Die:	SA36.V2-03



D SA53
Air Power Shears

Suitable for cutting straight lines in sheet metal. Palm throttle control and alloy head and housing. Blades are consumable items and are not covered by guarantee.

Maximum Cutting Capacity:	1.2mm (Steel)
Air Consumption:	4cfm
Operating Pressure:	90psi
Inlet Size:	1/4" BSP
Noise Power/Pressure:	99/88dB(A)
Vibration/Uncertainty:	6.4/0.38m/s ²
Weight:	1kg
Replacement Blade Outer Left:	SA53.V3-31
Replacement Blade Outer Right:	SA53.V3-30
Replacement Blade Centre:	SA53.V3-32



B SA28
Air Nibbler

Well balanced robust construction with fingertip operated throttle control. Suitable for cutting intricate shapes in steel up to 1.5mm thick. Punch and die may be rotated through 360° to aid access and obtain maximum consumable life.

Maximum Cutting Capacity:	1.5mm (Steel)
Free Speed:	3000spm
Air Consumption:	4cfm
Operating Pressure:	90psi
Inlet Size:	1/4" BSP
Noise Power/Pressure:	99/88dB(A)
Vibration/Uncertainty:	7.76/1.5m/s ²
Weight:	0.79kg
Replacement Punch & Die Set:	SA28PDKV2



E SA56
Pistol Type Air Shears

Pistol grip design for increased control and manoeuvrability. Finger tipped control and polished aluminium housing with alloy head. Suitable for cutting straight lines in steel metal sheet up to 1.2mm thickness.

Maximum Cutting Capacity:	1.2mm (Steel)
Air Consumption:	4cfm
Operating Pressure:	90psi
Inlet Size:	1/4" BSP
Noise Power/Pressure:	99/88dB(A)
Vibration/Uncertainty:	4/0.13m/s ²
Weight:	1.2kg
Replacement Blade Outer Left:	SA56.32
Replacement Blade Outer Right:	SA56.31
Replacement Blade Centre:	SA56.33



C SA649
Air Nibbler

Composite cover moulded around lightweight aluminium alloy housing reduces effects of chill on operator's hands and provides added control. Air motor with quality bearings for smooth and powerful operation. Exhaust outlet adjusts 360°, keeping airflow away from operator. Suitable for cutting intricate shapes in steel up to 1.5mm thick. Punch and die may be rotated through 360° to aid access and obtain maximum consumable life.

Maximum Cutting Capacity:	1.5mm (Steel)
Free Speed:	3200spm
Air Consumption:	4cfm
Operating Pressure:	90psi
Inlet Size:	1/4" BSP
Noise Power/Pressure:	97/86dB(A)
Vibration/Uncertainty:	8.73/3.33m/s ²
Weight:	0.9kg
Replacement Punch:	SA649.41
Replacement Die:	SA649.43



F SA120
Industrial Air Hammer

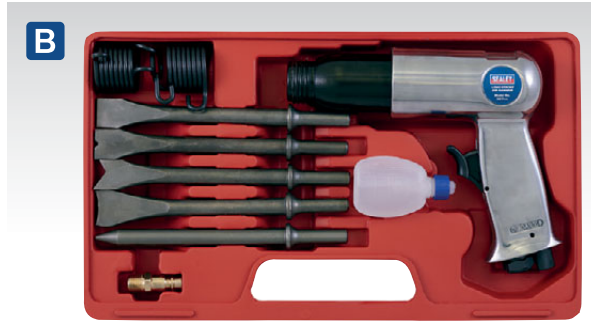
Heavy-duty alloy handle with thumb actuated trigger control. Large open grip enables use of this tool whilst wearing heavy gauntlets or gloves. Supplied with chisel retaining spring.

Chisel Shank Size:	12.7 x 47mm
Stroke:	20mm
Free Speed:	3000bpm
Air Consumption:	4cfm
Operating Pressure:	90psi
Inlet Size:	1/4" BSP
Noise Power/Pressure:	114/103dB(A)
Vibration/Uncertainty:	20.88/3.06m/s ²
Weight:	1.7kg
Replacement Spring Retainer:	SA120/21
Optional Chisels:	
Model No:	Type:
G SA120/F	Flat Chisel
H SA120/P	Pointed Chisel



A SA12/S MEDIUM STROKE
Medium Stroke Air Hammer Kit

Medium stroke air hammer and chisel set. Chisel variety covers a range of different applications. Supplied in storage case.



B SA11 LONG STROKE
Long Stroke Air Hammer Kit

Long stroke air hammer and chisel set. Chisel variety covers a range of different applications. Supplied in storage case.



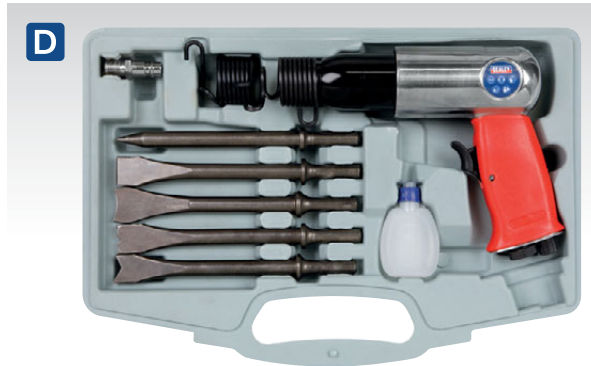
G SA11R/17
Retaining Spring for Air Hammer

Suitable for Model No's SA11, SA12/S, GSA11, GSA12, SA50, SA613, SA614 and other brands of air hammer. Chisels have .401" Parker Taper shanks.



C GSA12 MEDIUM STROKE
Generation Air Hammer Kit Medium Stroke

Generation Series air hammer kit. Handle exhaust reduces noise emission, and contoured soft grip allows added comfort and control. Chisel variety covers a range of different applications. Supplied in storage case.



D GSA11 LONG STROKE
Generation Air Hammer Kit Long Stroke

Generation Series air hammer kit. Handle exhaust reduces noise emission, and contoured, soft grip allows added comfort and control. Chisel variety covers a range of different applications. Supplied in storage case.



H SA11QRC
Air Chisel Quick Release Coupling

For use with .401" Parker taper chisels. Quick release feature allows fast and easy interchanges. Suitable for Sealey and other brands of air hammers.

Shank Size: .401" Parker Taper



E MEDIUM STROKE
3 YEAR GUARANTEE*
Premier



F LONG STROKE
3 YEAR GUARANTEE*
Premier

E-F SEE BELOW
Composite Air Hammer Kits

Composite lightweight housing reduces effects of chill on operator's hands. Exhaust outlet adjusts 360°, keeping airflow away from operator. Heat treated alloy steel impact components ensures suitability for the professional workshop. Supplied with five chisels.



I VS0291
Air Hammer Impact Driver

Used in conjunction with a standard air hammer at low pressure and 5/16" (8mm) Hex bit. Vibration shakes the screw loose doing the hard work for you, while rotation is applied with the handle. Ideal for corroded, countersunk, overtightened and painted screws. No more stripping of screw heads.

Shank Size: .401" Parker Taper

Bit Size: 5/16" (8mm), Bits not supplied

	A	B	C	D	E	F
Model No:	SA12/S	SA11	GSA12	GSA11	SA613	SA614
Chisel Shank Size:	.401" Parker Taper	.401" Parker Taper	.401" Parker Taper	.401" Parker Taper	.401" Parker Taper	.401" Parker Taper
Stroke:	32mm	67mm	43mm	66mm	50mm	70mm
Free Speed:	4500bpm	3500bpm	4500bpm	3600bpm	4200bpm	2900bpm
Air Consumption:	4cfm	4cfm	4cfm	5cfm	7.4cfm	7.8cfm
Operating Pressure:	90psi	90psi	90psi	90psi	90psi	90psi
Inlet Size:	1/4" BSP	1/4" BSP	1/4" BSP	1/4" BSP	1/4" BSP	1/4" BSP
Noise Power/Pressure:	95/84dB(A)	111/100dB(A)	114/103dB(A)	103/92dB(A)	111/100dB(A)	112/101dB(A)
Vibration/Uncertainty:	13.4/1.5m/s ²	28/11.2m/s ²	27/10.8m/s ²	12.78/1.76m/s ²	13.61/1.8m/s ²	16.15/1.88m/s ²
Weight:	1.2kg	1.5kg	2.2kg	2.3kg	1.4kg	1.6kg
Consumable Parts:	SA12C - 5pc Chisel Set	SA11C - 5pc Chisel Set	SA12C - 5pc Chisel Set	SA11C - 5pc Chisel Set	SA12C - 5pc Chisel Set	SA11C - 5pc Chisel Set



A SA51
Air Needle Scaler

Suitable for cleaning heavy paint and rust scale from metal surfaces. Palm control trigger mechanism. Replacement needle set available, see table below.



B SA52
Air Needle Scaler/Flux Chipper

Straight type air hammer supplied with interchangeable needle and chisel heads. Suitable for cleaning heavy paint and rust scale from metal surfaces. Palm control trigger mechanism. Replacement needle set and chisel available, see table below.



C SA661
Air Needle Scaler - Composite

Suitable for cleaning heavy paint and rust scale from metal surfaces. Composite housing protects user from chill and helps to reduce vibration. Palm control trigger mechanism. Directional, low noise air exhaust can be rotated 360°, giving operator added protection. Replacement needle set available, see table below.

3 YEAR
GUARANTEE*



D NEW

SA501 without Needle Scaler.
To use as a standard air hammer,
order Spring Retainer (SA11R/17).



E Generation

SA50 without Needle Scaler.
To use as a standard air hammer,
order Spring Retainer (SA11R/17).



F Premier

SA660 without Needle Scaler.
To use as a standard air hammer,
order Spring Retainer (SA11R/17).

3 YEAR
GUARANTEE*



G SA50A
Needle Scaler Adaptor

For cleaning heavy paint and rust scale from metal surfaces. Designed for use with Model No. SA50, but also suitable for Sealey and other brands of air hammers.

Replacement Needle Set (19pc): **SA50.02**

	A	B	C	D	E	F
Model No:	SA51	SA52	SA661	SA501	SA50	SA660
Stroke:	32mm	32mm	38mm	43mm	43mm	38mm
Free Speed:	4800bpm	4800bpm	4600bpm	4500bpm	4500bpm	4500bpm
Air Consumption:	3cfm	3cfm	6cfm	4cfm	4cfm	10cfm
Operating Pressure:	90psi	90psi	90psi	90psi	90psi	90psi
Inlet Size:	1/4" BSP	1/4" BSP	1/4" BSP	1/4" BSP	1/4" BSP	1/4" BSP
Noise Power/Pressure:	105/94dB(A)	105/94dB(A)	92/91dB(A)	111/100dB(A)	111/100dB(A)	107/97dB(A)
Vibration/Uncertainty:	9.84/1.34m/s ²	8.56/1.34m/s ²	4.9/2.45m/s ²	13/5.2m/s ²	13/5.2m/s ²	6.3/3.15m/s ²
Weight:	1.2kg	1.2kg	1.3kg	1.98kg	1.98kg	1.7kg
Replacement Needle Set:	SA51/16 (12pc)	SA51/16 (12pc)	SA51/16 (12pc)	SA50.02 (19pc)	SA50.02 (19pc)	SA50.02 (19pc)
Optional Accessories:	-	SA52/15 - Replacement Chisel	-	SA12C - 5pc Chisel Set, SA11R/17 - Spring Retainer	SA12C - 5pc Chisel Set, SA11R/17 - Spring Retainer	SA12C - 5pc Chisel Set, SA11R/17 - Spring Retainer



A SA153
Ø58mm Air Mini Angle Grinder

Lightweight mini housing design with textured finish. Ideal for work in confined areas. Features rear exhaust with baffle for reduced noise level and safety throttle lever to stop accidental operation. Suitable for professional workshop use. Supplied with grinding disc.



B SA43
Ø100mm Angle Grinder

Aluminium body and bevel gear housing with steel disc guard. Well-balanced, multipurpose tool suitable for general workshop use. Supplied with locking and pin spanners.



C SA44
Ø100mm Air Angle Grinder

Aluminium body and bevel gear housing with steel disc guard and side handle. Fitted with throttle safety device to prevent accidental operation. Balanced and comfortable to operate. Suitable for general/heavy workshop use. Supplied with side handle and locking and pin spanners. Grinding disc not included.



D SA152
Ø100mm Air Angle Grinder - Composite Body

Lightweight, easy to handle composite body reduces the effects of vibration and chill. Features rear exhaust with baffle for reducing noise level, safety throttle lever and spindle stop button. Supplied with side handle and spanner. Grinding disc not included.

	A	B	C	D
Model No:	SA153	SA43	SA44	SA152
Disc Size:	Ø58mm	Ø100mm	Ø100mm	Ø100mm
Spindle Size:	1/4" x 19 UNC	M10 x 1.5mm	3/8" x 24 UNF	M10 x 1.5mm
Free Speed:	15000rpm	10000rpm	10000rpm	12000rpm
Air Consumption:	3cfm	3.5cfm	4cfm	4cfm
Operating Pressure:	90psi	90psi	90psi	90psi
Inlet Size:	1/4"BSP	1/4"BSP	1/4"BSP	1/4"BSP
Noise Power/Pressure:	88/77dB(A)	86/82dB(A)	94/83dB(A)	96/85dB(A)
Vibration/Uncertainty:	5.66/1.06m/s ²	0.6/0.1m/s ²	2.09/1.5m/s ²	6.5/1.14m/s ²
Weight:	0.34kg	1.1kg	1.9kg	1.8kg



E PTC/100G
Ø100 x 6mm Grinding Disc Ø16mm Bore

Aluminium oxide, depressed centre disc for electric and air tools. Suitable for metal grinding applications.

Disc Size Metric:	Disc Size Imperial:	Bore:	Pack Qty:
Ø100 x 6mm	Ø4"	Ø16mm	1



F SA92
Air Tyre Buffer

Aluminium cased air motor with selection of Ø6mm shanked grinding points, Ø10mm chuck and tyre buffing cone. Kit also includes spanners, chuck key and air hose adaptors.

Chuck Size:	Ø10mm
Free Speed:	22000rpm
Air Consumption:	5cfm
Operating Pressure:	90psi
Inlet Size:	1/4"BSP
Noise Power/Pressure:	101/90dB(A)
Vibration/Uncertainty:	1.5/0.64m/s ²
Weight:	0.4kg
Replacement Buffing Cone:	SA651/C



A SA31 Air/Hydraulic Riveter

Powerful tool suitable for both aluminium and blind steel rivets up to 3/16". Supplied with four riveting nozzles and two spanners. Trigger operated riveter with hardened steel jaw assembly and rivet shaft safety cap.



B SA312 Air/Hydraulic Riveter

Suitable for aluminium, steel and stainless steel rivets up to 3/16". Supplied with four riveting nozzles and two spanners. Trigger operated riveter with hardened steel jaw assembly and rivet shaft safety cap. Will handle heavy assembly work.



C GSA312 Air/Hydraulic Riveter

Suitable for aluminium, steel and stainless steel rivets up to 3/16". Supplied with four riveting nozzles and two spanners. Trigger operated riveter with hardened steel jaw assembly and rivet shaft safety cap. Will handle heavy assembly work. Composite handle insulates user from chill and vibration.



D SA314 Heavy-Duty Air/Hydraulic Riveter

Heavy-duty model suitable for aluminium, steel and stainless steel rivets up to 1/4". Supplied with five riveting nozzles and two spanners. Trigger operated riveter with hardened steel jaw assembly and rivet shaft safety cap. Ideal for heavy assembly work.



E GSA314 Heavy-Duty Air/Hydraulic Riveter

Heavy-duty model suitable for aluminium, steel and stainless steel rivets up to 1/4". Supplied with five riveting nozzles and two spanners. Trigger operated riveter with hardened steel jaw assembly and rivet shaft safety cap. Ideal for heavy assembly work. Composite handle insulates user from chill and vibration.



F SA316 Air/Hydraulic Riveter Vacuum System

Powerful tool suitable for aluminium, steel, stainless steel and structural blind rivets up to 1/4". Trigger operated riveter with hardened steel jaw assembly and air-actuated vacuum rivet shaft collector. Grip for added comfort and hanging loop for use with balancer. Supplied with three riveting nozzles, two spanners and oil can.



HEAVY DUTY



	A	B	C	D	E	F
Model No:	SA31	SA312	GSA312	SA314	GSA314	SA316
Nozzle Sizes:	3/32"(2.4mm), 1/8"(3.2mm), 5/32"(4mm), 3/16"(4.8mm)	3/32"(2.4mm), 1/8"(3.2mm), 5/32"(4mm), 3/16"(4.8mm)	3/32"(2.4mm), 1/8"(3.2mm), 5/32"(4mm), 3/16"(4.8mm)	3/32"(2.4mm), 1/8"(3.2mm), 5/32"(4mm), 3/16"(4.8mm), 1/4"(6.4mm)	3/32"(2.4mm), 1/8"(3.2mm), 5/32"(4mm), 3/16"(4.8mm), 1/4"(6.4mm)	3/16"(4.8mm), 7/32"(5.6mm), 1/4"(6.4mm)
Air Consumption:	4cfm	4cfm	4cfm	4cfm	4cfm	4cfm
Operating Pressure:	90psi	90psi	90psi	90psi	90psi	90psi
Inlet Size:	1/4"BSP	1/4"BSP	1/4"BSP	1/4"BSP	1/4"BSP	1/4"BSP
Blind Rivet Type:						
Aluminium:	✓	✓	✓	✓	✓	✓
Steel:	✓	✓	✓	✓	✓	✓
Stainless Steel:	✗	✓	✓	✓	✓	✓
Structural:	✗	✗	✗	✗	✗	✓
Noise Power/ Pressure:	80/72 dB(A)	80/72 dB(A)	80/73 dB(A)	80/72 dB(A)	80/73 dB(A)	82/71 dB(A)
Weight:	1.3kg	1.3kg	1.3kg	1.6kg	1.6kg	1.9kg

G SA317 Air/Hydraulic Nut Riveter Vacuum System

Heavy-duty, suitable for all types of nut rivets. Supplied with seven mandrels, two spanners and oil syringe. Trigger operated with automatic wind release for fast application. Will handle heavy assembly work.

Mandrel Sizes:	M3, M4, M5, M6, M8, M10, M12
Air Consumption:	4.5cfm
Operating Pressure:	100psi
Inlet Size:	1/4"BSP
Stroke Range:	1-8mm
Noise Power/Pressure:	89/78dB(A)
Weight:	2.6kg



A SA789
13-32mm Air Staple Gun

Professional air stapler with lightweight aluminium body and rubber grip handle. Safety trigger device to prevent accidental firing of staples. Supplied in storage case with oiler and starter pack of staples.

Staple Capacity:	13-32mm 18SWG
Operating Pressure:	60-100psi
Inlet Size:	1/4" BSP
Noise Power/Pressure:	98/85dB(A)
Vibration/Uncertainty:	4.69/1.5m/s ²
Weight:	1.05kg



B SA791
10-50mm Air Nail Gun

Professional air nail gun with lightweight aluminium body and rubber grip handle. Fastener size 18 gauge nails 3/8"-2"(10-50mm). Magazine capacity 100 nails with built-in capacity indicator. Firing mode contact actuation. Thumbscrew adjustment of drive depth to suit application. Adjustable 360° exhaust allowing air to be directed away from debris. Supplied with storage case with oiler and starter pack of nails.

Nail Capacity:	10-50mm 18SWG
Operating Pressure:	60-100psi
Inlet Size:	1/4" BSP
Noise Power/Pressure:	99/92dB(A)
Vibration/Uncertainty:	2.8/1.5m/s ²
Weight:	1.25kg



C SA792
10-50mm/10-40mm Air Nail/Staple Gun

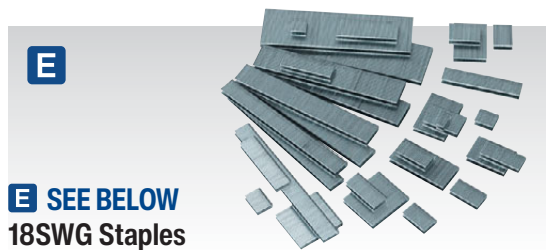
Professional air nailer/stapler with lightweight aluminium body and rubber grip handle. Safety trigger device to prevent accidental firing of nails and staples. Supplied in storage case with oiler and starter pack of nails and staples.

Nail Capacity:	10-50mm 18SWG
Staple Capacity:	10-40mm 18SWG
Operating Pressure:	60-116psi
Inlet Size:	1/4" BSP
Noise Power/Pressure:	99/93dB(A)
Vibration/Uncertainty:	2.74/1.37m/s ²
Weight:	2.68kg



D SEE BELOW
18SWG Nails

Model No:	Length:	Pack Qty:	Applications:
SAAN1810	10mm	5000	SA791, SA792
SAAN1815	15mm	5000	SA791, SA792
SAAN1820	20mm	5000	SA791, SA792
SAAN1825	25mm	5000	SA791, SA792
SAAN1830	30mm	5000	SA791, SA792
SAAN1832	32mm	5000	SA791, SA792
SAAN1835	35mm	5000	SA791, SA792
SAAN1840	40mm	5000	SA791, SA792
SAAN1850	50mm	5000	SA791, SA792



E SEE BELOW
18SWG Staples

Model No:	Length:	Crown:	Pack Qty:	Applications:
SAAS1810	10mm	5.7mm	5000	SA789, SA792
SAAS1813	13mm	5.7mm	5000	SA789, SA792
SAAS1816	16mm	5.7mm	5000	SA789, SA792
SAAS1819	19mm	5.7mm	5000	SA789, SA792
SAAS1825	25mm	5.7mm	5000	SA789, SA792
SAAS1828	28mm	5.7mm	5000	SA789, SA792
SAAS1832	32mm	5.7mm	5000	SA789, SA792
SAAS1835	35mm	5.7mm	5000	SA792
SAAS1838	38mm	5.7mm	5000	SA792
SAAS1840	40mm	5.7mm	5000	SA792



F SAC0610EKIT
Air Compressor/Air Nail/Staple Gun Kit

The most economical way to purchase an air nail/staple gun kit. Comprises Model No's SAC0610E Compressor, AH5RX 5m Air Hose and SA792 Nail/Staple Gun. Compressor can also be used with any of our air brushes (see page 696) or tyre inflators (see pages 555 to 557).

Compressor Specification:	
Motor Output:	1hp
Voltage/Phase:	230V - 1ph
Minimum Rated Supply:	13A
Air Displacement cfm(L/min):	4(113)
Maximum Free Air Delivery cfm(L/min):	2.7(76)
Maximum Pressure:	116psi(8bar)
Receiver Capacity:	6L
Outlet Fitting:	Quick Release Coupling
Dimensions (W x D x H):	400 x 175 x 430mm
Weight:	14.5kg
Nailer/Stapler Specification:	
Nail Capacity:	10-50mm 18SWG
Staple Capacity:	10-40mm 18SWG
Operating Pressure:	60-116psi
Gun Weight:	1.35kg



F

6L

4 cfm

1hp

ALWAYS WEAR SAFETY GOGGLES WHEN USING THESE TOOLS



A SA33G
5pc Air Accessory Kit

Air tools and accessories suitable for all leading makes of compressor. Includes gravity feed spray gun, tyre inflator with gauge, paraffin/detergent spray gun, air blow gun and coiled air hose. Components are fitted with 1/4" BSP threaded unions. Also available individually, see below.

Contents:	Model No:
1 Gravity Feed Spray Gun:	n/a
2 Tyre Inflator with Gauge:	SA302
3 Paraffin Spray Gun:	SA303
4 Air Blow Gun:	SA304
5 Coiled Air Hose:	SA305



B SA320K
19pc Air Blow Gun Kit

Die-cast metal body with moulded handle and hanging point. Palm type gun with thumb trigger control. Supplied with jet and safety nozzle. Quick release coupling/adaptor kit and tyre pressure gauge. Ø1/4"(6mm) x 7m PE air hose with 1/4" BSP Male connectors. Maximum operating pressure 110psi.

Contents:	1/4" BSP
Ø1/4"(6mm) x 7m PE Air Hose with 1/4" BSP Male Connectors, Air Blow Gun, Female 1/4" BSP Quick Coupling (PCL) (x2), Blow Gun Attachment Adaptor, Blow Gun Safety Nozzle, 1/4" BSP Male/Male Adaptor, Blow Gun Nozzle, Roll of PTFE Tape, Tapered Blow Gun Nozzle, Inflating Needles (x2), 1/4" BSP Male Quick Connector (PCL) (x3), 1/4" BSP Female Quick Connector (PCL) (x2), 1/4" BSP Female/Female Adaptor, Tyre Pressure Gauge	



C SA919
200mm Air Blow Gun

Die-cast metal body with moulded handle and hanging point. Maximum operating pressure 110psi.

Lance Length:	200mm
Inlet Size:	1/4" BSP



D SA914
4pc Air Blow Gun

Composite valve body with interchangeable nozzles and safety tip. Includes 100 and 300mm extensions, gun body, blanking plug and safety nozzle. Maximum operating pressure 110psi.

Lance Length:	100/300mm
Inlet Size:	1/4" BSP



E-F SEE BELOW
Air Blow Gun

Die-cast metal body with moulded handle and hanging point. Fitted with short type nozzle. Maximum operating pressure 110psi. Model No. SA304 Supplied with quick release coupling.

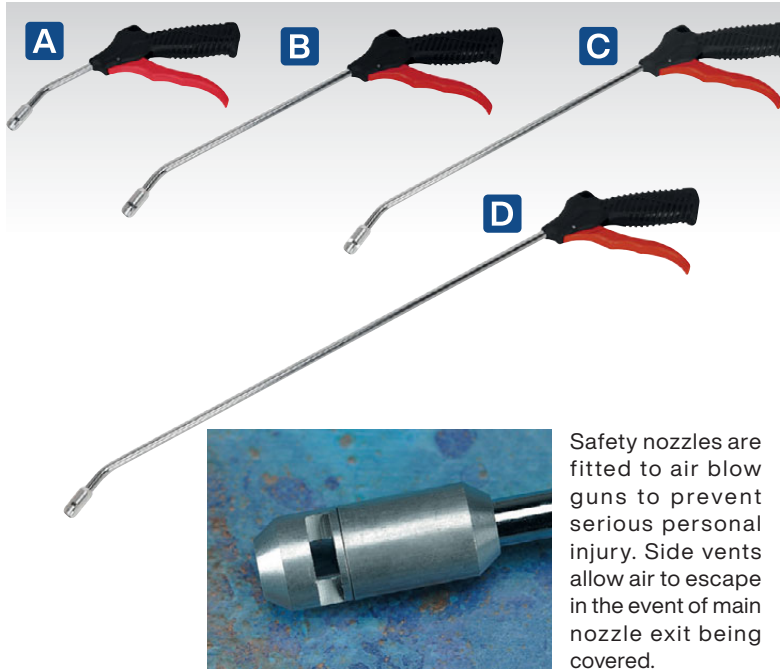
Model No:	Inlet Type:
E SA334	1/4" BSP
F SA304	Quick Release Coupling



G SA904
Mini Air Blow Gun with Venturi Tip

Composite mini air blow gun with venturi tip for increased airflow compared to standard blow guns. Small size and detachable hook allow the blow gun to be ready to use at all times. Max. working pressure of 90psi

Inlet Size:	1/4" BSP
-------------	----------



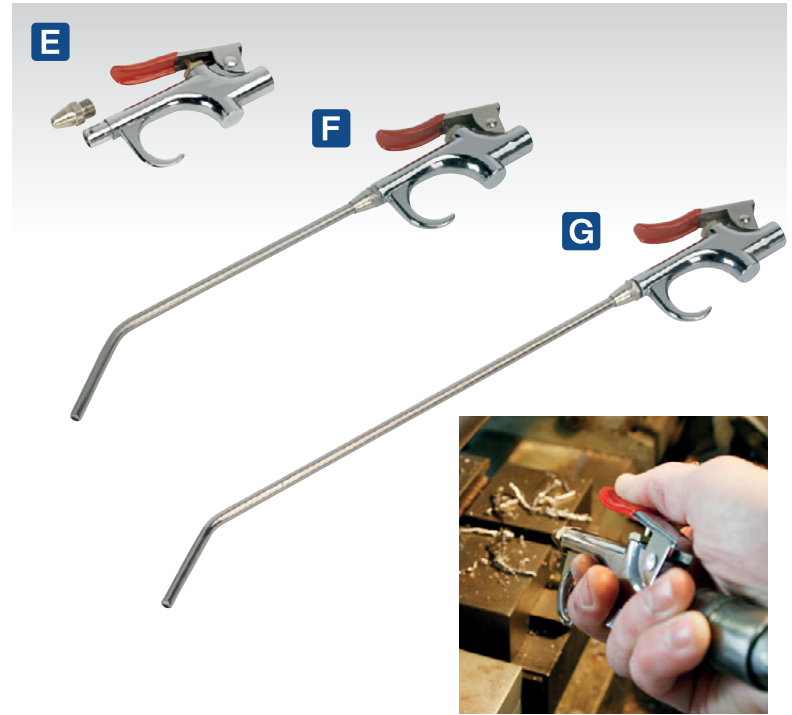
Safety nozzles are fitted to air blow guns to prevent serious personal injury. Side vents allow air to escape in the event of main nozzle exit being covered.

A-D SEE BELOW

Air Blow Guns with Safety Nozzle

Trigger operated blow guns with extended lance. Fitted with brass air inlet ferrule. Suitable for quick removal of chips, dust and particulate from any surface. Ideal for use in the workshop or bodyshop. Long lance allows projection of airflow directly to required area. Supplied with safety nozzle. Maximum operating pressure 110psi.

Model No:	Lance Length:	Inlet Size:
A SA9131	100mm	1/4" BSP
B SA9133	250mm	1/4" BSP
C SA9135	330mm	1/4" BSP
D SA9137	500mm	1/4" BSP



E-G SEE BELOW

Palm Type Air Blow Guns with Safety Nozzle

Die-cast metal body with moulded handle and hanging point. Palm type guns with thumb trigger control. Maximum operating pressure 110psi.

Model No:	Lance Length:	Inlet Size:
E SA913	n/a	1/4" BSP
F SA913M	180mm	1/4" BSP
G SA913L	290mm	1/4" BSP



Nozzle is fitted with six safety outlets.

H-I SEE BELOW

Air Blow Guns with Side Outlet

Trigger operated side outlet blow guns with extended lance. Suitable for the removal of dust and other particulates from air filters, radiators, condensers and other surfaces. Ideal for the commercial, agricultural and bodyshop environment. Lance allows projection of airflow directly to required area at a 90° angle to the body. Nozzle is fitted with six safety outlets. Maximum operating pressure 90psi.

Model No:	Lance Length:	Inlet Size:
H SA9247	715mm	1/4" BSP
I SA9248	1095mm	1/4" BSP



J-L SEE BELOW

Air Blow Guns

Trigger operated blow guns. Fitted with brass air inlet ferrule. Suitable for quick removal of chips, dust and particulate from any surface. Ideal for use in the workshop or bodyshop. Long lance allows projection of airflow directly to required area. Model No. SA9252 air curtain nozzle is ideal for a larger dispersal of air. Air release valve built into the body enables the trigger/airflow to be feathered. Maximum operating pressure 140psi.

Model No:	Type:	Inlet Size:
J SA9250	110mm Lance	1/4" BSP
K SA9251	270mm Lance	1/4" BSP
L SA9252	Air Curtain Nozzle	1/4" BSP