

ELECTRIC POWER TOOLS

[back to
Section List](#)



Angle Grinders

878-879

Drywall Sanders

885

Electric Hammer Drills & Accessories

876-877

Glue Guns

888

Hot Air Guns

888-889

Impact Wrenches

874-875

Multi-Tools & Accessories

887

Paddle Mixers

886

Polishers

882-884

Riveters - Cordless

875

Rotary Tools

890

Sanders

880-885

Screwdrivers - Cordless

873

SV10.8 Series - One Battery Platform

832-838

SV12 Series - One Battery Platform

839-843

SV20 Series - One Battery Platform

844-872

ELECTRIC POWER TOOLS

**NEW CORDLESS
IMPACT WRENCHES**
SEE PAGES 874 TO 875.

**BUILD YOUR CORDLESS POWER
TOOL KIT USING THE 10.8V, 12V OR
20V ONE BATTERY PLATFORMS.**
SEE PAGES 832 TO 872.



BRANDS EXPLAINED

Premier

Our Premier range offers the very best in performance and price, covered by a 2 year parts and 3 year labour guarantee*. We specify the very highest quality components and manufacturing designs to ensure a long and durable life.

SV10.8
SERIES

SV12
SERIES

SV20
SERIES

SEALEY

Our Sealey range is defined by traditional designs and proven workshop reliability. Our core range, trusted for over 40 years, is one of the UK's market leaders in tools and equipment.

Siegen

Offering impressive reliability with exceptional value for money. Our Siegen range is backed up with the same professional aftersales service as the Sealey and Premier ranges.

SV10.8 SERIES

SV10.8 Series

The Sealey SV10.8 Series, powered by fast charging high output lithium-ion batteries, designed to make everyday tasks quick and easy. These quality, stylish tools deliver outstanding performance and feature ergonomic housings with soft grips providing greater control and comfort.



BUILD YOUR OWN TOOL KIT OR CONSIDER OUR READY MADE KITS

1 Choose your tool

2 Choose your battery

2Ah 4Ah

CP108VBP CP108VBP4

3 Add charger & bag...

CP108VMC CP1200CB

and you're good to go!

CP108VMC2

A **SV10.8 SERIES**

3/8" Sq Drive

45Nm Torque

VARIABLE SPEED

B

+ BATTERY (2Ah)
+ BATTERY CHARGER

A-B SEE RIGHT

10.8V 3/8" Sq Drive Cordless Ratchet Wrench

Compact, lightweight cordless ratchet wrench allows access to tight spaces. With spindle locking that gives more control during application and a quick stopping function. Steel ratchet head with forward and reverse control. Robust housing with soft, comfortable grip.

Drive:	3/8" Sq
No-Load Speed:	0-300rpm
Maximum Torque:	45Nm(33lb.ft)
Noise Power/Pressure:	91/80dB(A)
Body Only Weight:	0.70kg

Model No:	Type:	Contents:
A CP108VCRWBO	Body Only	Ratchet Wrench
B CP108VCRW	Kit	CP108VCRWBO - Ratchet Wrench CP108VBP - 2Ah Battery CP108VMC - Battery Charger

C

VARIABLE SPEED

SV10.8 SERIES

3/8" Sq Drive

220Nm Torque

D

+ BATTERY (2Ah)
+ BATTERY CHARGER

C-D SEE RIGHT

10.8V 3/8" Sq Drive Cordless Impact Wrench

Compact, lightweight cordless impact wrench. Robust housing with soft grip to reduce vibration. Integrated LED battery level indicator and LED worklight.

Drive:	3/8" Sq
No-Load Speed:	0-2700rpm
Breakaway Torque:	220Nm(162lb.ft)
Fastening Torque:	155Nm(114lb.ft)
Noise Power/Pressure:	84/73dB(A)
Body Only Weight:	0.78kg

Model No:	Type:	Contents:
C CP108VCIWBO	Body Only	Impact Wrench
D CP108VCIW	Kit	CP108VCIWBO - Impact Wrench CP108VBP - 2Ah Battery CP108VMC - Battery Charger

E

VARIABLE SPEED

SV10.8 SERIES



120Nm Torque

For 1/4" Hex Bits

E-F SEE RIGHT

10.8V 1/4" Hex Drive Cordless Impact Driver

Compact, lightweight cordless 1/4" Hex drive impact driver. Comfortable housing with soft grip to reduce vibration. With variable speed that give more control during application. Integrated LED battery level indicator and LED worklight.

Drive:	1/4" Hex
No-Load Speed:	0-2700rpm
Maximum Torque:	120Nm
Noise Power/Pressure:	84/73dB(A)
Body Only Weight:	0.80kg

F



+ BATTERY (2Ah)
+ BATTERY CHARGER



Model No:	Type:	Contents:
E CP108VCIDBO	Body Only	Impact Driver
F CP108VCID	Kit	CP108VCIDBO - Impact Driver CP108VBP - 2Ah Battery CP108VMC - Battery Charger

G

VARIABLE SPEED

SV10.8 SERIES



Ø10mm

28Nm Torque

G-H SEE RIGHT

10.8V Ø10mm Cordless Combi Drill/Driver

Compact, lightweight cordless drill/driver with hammer function. Comfortable housing with soft grip to reduce vibration. With variable speed and locking functions that give more control during application. All metal gear construction for ultimate durability and performance. Integrated LED battery level indicator and LED worklight.

Chuck Size:	Ø10mm
No-Load Speed:	0-400/0-1300rpm
Maximum Torque:	28Nm
Noise Power/Pressure:	82.1/71.1dB(A)
Body Only Weight:	0.85kg

H



+ BATTERY (2Ah)
+ BATTERY CHARGER



Model No:	Type:	Contents:
G CP108VDDBO	Body Only	Combi Drill/Driver
H CP108VDD	Kit	CP108VDDBO - Combi Drill/Driver CP108VBP - 2Ah Battery CP108VMC - Battery Charger

I NEW

VARIABLE SPEED

SV10.8 SERIES



I-J SEE RIGHT

10.8V SDS Plus Cordless Rotary Hammer Drill

Compact, lightweight cordless SDS Plus rotary hammer drill. Comfortable housing with soft grip to help reduce vibration. SDS Plus chuck. Two drilling functions, rotary and rotary with hammer. Built-in LED worklight and forward, reverse and trigger-lock. Variable speed trigger for greater control.

Chuck Size:	SDS PLUS
Impact Rate:	0-4800bpm
Impact Energy:	0.6J
No-Load Speed:	0-900rpm
Body Only Weight:	1.14kg

J NEW



+ BATTERY (2Ah)
+ BATTERY CHARGER



Model No:	Type:	Contents:
I CP108VSDSBO	Body Only	Rotary Hammer Drill
J CP108VSDS	Kit	CP108VSDSBO - Rotary Hammer Drill CP108VBP - 2Ah Battery CP108VMC - Battery Charger



A-B SEE RIGHT

10.8V Ø150mm Cordless Dual Action Sander/Polisher

Compact, lightweight cordless sander/polisher. Comfortable housing with soft grip to help reduce vibration. Variable control with no load speeds ranging from 2500 to 5000rpm. Supplied with backing pad. Suitable for hook-and-loop sanding and polishing pads.

No-Load Speed:	2500-5000rpm
Pad Size:	Ø150mm
Body Only Weight:	0.98kg

Model No:	Type:	Contents:
A CP108VSPBO	Body Only	Sander/Polisher
B CP108VSP	Kit	CP108VSPBO - Sander/Polisher CP108VBP - 2Ah Battery CP108VMC - Battery Charger



C-D SEE RIGHT

10.8V 150mm Cordless Detail Sander

Compact, lightweight cordless detail sander. Comfortable housing with soft grip to help reduce vibration. Ideal for tasks such as removing rust, paint and sanding wood. Hook-and-loop pad for fast change of sandpaper. Three pieces of sandpaper supplied. Features dust extractor port. A dust collection bag is supplied.

No-Load Speed:	6000-11000rpm
Pad Size:	150 x 100mm
Body Only Weight:	0.54kg

Model No:	Type:	Contents:
C CP108VDSBO	Body Only	Detail Sander
D CP108VDS	Kit	CP108VDSBO - Detail Sander CP108VBP - 2Ah Battery CP108VMC - Battery Charger



E-F SEE RIGHT

10.8V Ø75mm Cordless Polisher

Compact, lightweight cordless polisher. Comfortable housing with soft grip to help reduce vibration. 2-Speed variable control trigger makes this polisher very easy-to-use. Supplied with side handle and polishing pad.

Pad Size:	Ø75mm
No-Load Speed:	0-2600/0-7800rpm
Noise Power/Pressure:	91/80dB(A)
Body Only Weight:	0.69kg

Model No:	Type:	Contents:
E CP108VCPBO	Body Only	Polisher
F CP108VCP	Kit	CP108VCPBO - Polisher CP108VBP - 2Ah Battery CP108VMC - Battery Charger

A NEW

Ø85mm

SV10.8
SERIES



A-B SEE RIGHT

10.8V Ø85mm Cordless Circular Saw

Compact, lightweight cordless circular saw. Comfortable housing with soft grip to help reduce vibration. Supplied with wrench for removing and replacing blades.

Blade Diameter:	Ø85mm
Cutting Depth at 90°/45°:	26mm/17mm
Disc Bore Size:	Ø15mm
Noise Power/Pressure:	88/77dB(A)
No-Load Speed:	0-1450rpm
Vibration/Uncertainty:	3.368/1.5m/s ²
Body Only Weight:	1.12kg

B NEW

+ BATTERY (2Ah)
+ BATTERY CHARGER



Model No:	Type:	Contents:
A CP108VCSBO	Body Only	Circular Saw
B CP108VCS	Kit	CP108VCSBO - Circular Saw CP108VBP - 2Ah Battery CP108VMC - Battery Charger

C NEW

Ø85mm

SV10.8
SERIES



C-D SEE RIGHT

10.8V Ø85mm Cordless Angle Grinder

Compact, lightweight cordless angle grinder. Comfortable housing with soft grip to help reduce vibration. Variable speed with six settings. Blade guard that can be adjusted and spindle locking button. LED Battery light indicator. Supplied with hex key for easy blade switching. Grinding/cutting blade not included.

Disc Size:	Ø85mm
No-Load Speed:	12000-19500rpm
Noise Power/Pressure:	87/76dB(A)
Spindle Size:	M5
Vibration/Uncertainty:	0.732/1.5m/s ²
Body Only Weight:	0.73kg

D NEW

+ BATTERY (2Ah)
+ BATTERY CHARGER



Model No:	Type:	Contents:
C CP108VAGBO	Body Only	Angle Grinder
D CP108VAG	Kit	CP108VAGBO - Angle Grinder CP108VBP - 2Ah Battery CP108VMC - Battery Charger

E NEW



E-F SEE RIGHT

10.8V Cordless Reciprocating Saw

Compact, lightweight cordless reciprocating saw suitable for cutting wood and soft metals. Built-in quick blade change system and safety guard. Supplied with single cutting blade. Locking button for added security.

Max Cutting Depths:	Wood - 80mm, Metal - 3mm
Noise Power/Pressure:	95/84dB(A)
No-Load Speed:	0-2700rpm
Stroke Length:	20mm
Vibration/Uncertainty:	9.154/1.5m/s ²
Consumable Parts:	WRS3021/150
	Reciprocating Saw Blade 150mm 6tpi - Pack of 5
Body Only Weight:	1.02kg

F NEW

+ BATTERY (2Ah)
+ BATTERY CHARGER



Model No:	Type:	Contents:
E CP108VRSBO	Body Only	Reciprocating Saw
F CP108VRS	Kit	CP108VRSBO - Reciprocating Saw CP108VBP - 2Ah Battery CP108VMC - Battery Charger

A NEW



A-B SEE RIGHT

10.8V Cordless Multipurpose Mini Grinder & 50pc Accessory Kit

Compact, lightweight cordless multipurpose mini grinder and 50-piece accessory kit. Comfortable composite housing with soft grip to reduce vibration. 7-Speed settings provide the control required to complete various tasks. Quick release collet and spindle lock for fast tool changes. Supplied with a range of tips, wheels, discs, dressing stones and a chuck spanner. Integral LED worklight and LED battery level indicator.

Collets:	1mm (x1), 1.7mm (x1), 2mm (x1), 2.4mm (x1), 3.2mm (x1)
No-Load Speed:	5000-25000rpm
Contents:	Accessories; HSS Drill Bits (x6), Mandrels as Tool Holders (x2), Polishing Discs (x3), Grinding Discs (x4), Metal Brush (x1), Cutting Discs (x16), Collect Chucks (x5), Synthetic Brushes (x2), Milling Bits (x3), Engraving Bits (x2), Grinding Bits (x5), Combination Spanner (x1)
Body Only Weight:	0.27kg

B NEW



+ BATTERY (2Ah)
+ BATTERY CHARGER

Model No:	Type:	Contents:
A CP108VMGBO	Body Only	Mini Grinder
B CP108VMG	Kit	CP108VMGBO - Mini Grinder CP108VBP - 2Ah Battery CP108VMC - Battery Charger

C NEW



C-D SEE RIGHT

10.8V Cordless Multi-Tool

Compact, lightweight cordless Multi-Tool. Comfortable housing with soft grip to help reduce vibration. One tool suitable for multiple tasks such as sanding, scraping and cutting various materials. Includes sanding paper, backing pad, scraper and cutting blade. 6-Speed settings for greater control. Quick release/lock system for fitting attachments.

No-Load Speed:	5000-19000rpm
Accessories:	Sanding paper, backing pad, scraper, cutting blade
Replacement Backing Pad:	SMTA12
Body Only Weight:	0.98kg

D NEW



+ BATTERY (2Ah)
+ BATTERY CHARGER

Model No:	Type:	Contents:
C CP108VMTBO	Body Only	Multi-Tool
D CP108VMT	Kit	CP108VMTBO - Multi-Tool CP108VBP - 2Ah Battery CP108VMC - Battery Charger

E
2Ah



F
4Ah



Lithium RECHARGEABLE

SV10.8 SERIES

E-F SEE BELOW

10.8V Lithium-ion Battery Packs

Suitable for use with the SV10.8 Series.

	E	F
Model No:	CP108VBP	CP108VBP4
Battery:	10.8V 2Ah Li-ion	10.8V 4Ah Li-ion
Charging Time:	50mins	115mins

G NEW

FAST CHARGE



SV10.8 SERIES

H NEW

FAST CHARGE



G-H SEE BELOW

10.8V Lithium-ion Fast Charge Battery Chargers for the SV10.8V Series

Mains charger units for the SV10.8 Series. Suitable for fast charging 2Ah or 4Ah lithium-ion batteries.

Model No:	Charger Type:	Supply/Plug Type:	Applications:
G CP108VMC	Single	230V/3-Pin	CP108VBP, CP108VBP4
G CP108VMCEU	Single	220V/Shuko	CP108VBP, CP108VBP4
H CP108VMC2	Twin	230V/3-Pin	CP108VBP, CP108VBP4



VARIABLE SPEED

SV10.8 SERIES

A CP108VCOMBO1

4 x 10.8V Cordless Combo Kit - 2 Batteries

Refer to individual Model No. for full specification.

Contents:

- | | |
|------------------------------|-----------------------------|
| CP108VDDBO - Combi Drill | CP108VBP - 2Ah Battery (x2) |
| CP108VCRWBO - Ratchet Wrench | CP108VMC - Battery Charger |
| CP108VCIWBO - Impact Wrench | Canvas Storage Bag |
| CP108VCPBO - Polisher | |



VARIABLE SPEED

SV10.8 SERIES

B CP108VCOMBO2

4 x 10.8V Cordless Combo Kit - 2 Batteries

Refer to individual Model No. for full specification.

Contents:

- | | |
|------------------------------|-----------------------------|
| CP108VDDBO - Combi Drill | CP108VBP - 2Ah Battery (x2) |
| CP108VCRWBO - Ratchet Wrench | CP108VMC - Battery Charger |
| CP108VCIWBO - Impact Wrench | Canvas Storage Bag |
| CP108VICDBO - Impact Driver | |



VARIABLE SPEED

SV10.8 SERIES

C CP108VCOMBO3

2 x 10.8V Cordless Combo Kit - 2 Batteries

Refer to individual Model No. for full specification.

Contents:

- | | |
|-----------------------------|-------------------------------|
| CP108VDDBO - Combi Drill | CP108VBP4 - 4Ah Battery |
| CP108VICDBO - Impact Driver | CP108VMC - Battery Charger |
| CP108VBP - 2Ah Battery | CP1200CB - Canvas Storage Bag |



VARIABLE SPEED

SV10.8 SERIES

D CP108VCOMBO4

2 x 10.8V Cordless Combo Kit - 2 Batteries

Refer to individual Model No. for full specification.

Contents:

- | | |
|-----------------------------------|-------------------------------|
| CP108VSDSBO - Rotary Hammer Drill | CP108VBP4 - 4Ah Battery |
| CP108VICDBO - Impact Driver | CP108VMC - Battery Charger |
| CP108VBP - 2Ah Battery | CP1200CB - Canvas Storage Bag |

A NEW
VARIABLE
SPEED
SV10.8
SERIES
A CP108VCOMB05**2 x 10.8V Cordless Combo Kit - 2 Batteries**

Refer to individual Model No. for full specification.

Contents:

CP108VDDBO - Combi Drill
 CP108VMTBO - Multi-Tool
 CP108VBP - 2Ah Battery

CP108VBP4 - 4Ah Battery
 CP108VMC - Battery Charger
 CP1200CB - Canvas Storage Bag

B NEW
VARIABLE
SPEED
SV10.8
SERIES
B CP108VCOMB06**2 x 10.8V Cordless Combo Kit - 2 Batteries**

Refer to individual Model No. for full specification.

Contents:

CP108VCIWBO - Impact Wrench
 CP108VCRWBO - Ratchet Wrench
 CP108VBP - 2Ah Battery

CP108VBP4 - 4Ah Battery
 CP108VMC - Battery Charger
 CP1200CB - Canvas Storage Bag

C NEW
VARIABLE
SPEED
SV10.8
SERIES
C CP108VCOMB07**5 x 10.8V Cordless Combo Kit - 2 Batteries**

Refer to individual Model No. for full specification.

Contents:

CP108VAGBO - Angle Grinder
 CP108VSDSBO - Rotary Hammer Drill
 CP108VDDBO - Combi Drill
 CP108VCIDBO - Impact Driver
 CP108VSPBO - Sander/Polisher

CP108VBP - 2Ah Battery
 CP108VBP4 - 4Ah Battery
 CP108VMC - Battery Charger
 CP1200CB - Canvas Storage Bag

D NEW
VARIABLE
SPEED
SV10.8
SERIES
D CP108VCOMB08**5 x 10.8V Cordless Combo Kit - 2 Batteries**

Refer to individual Model No. for full specification.

Contents:

CP108VMTBO - Multi-Tool
 CP108VRSBO - Reciprocating Saw
 CP108VDDBO - Combi Drill
 CP108VCIWBO - Impact Wrench
 CP108VCSBO - Circular Saw

CP108VBP - 2Ah Battery
 CP108VBP4 - 4Ah Battery
 CP108VMC - Battery Charger
 CP1200CB - Canvas Storage Bag

SV12 SERIES

The SV12 Series One-Battery-Fits-All Range

The Sealey SV12 Series offers a range of compact, powerful tools, ideal for use in tight spaces. Advanced lithium-ion battery technology delivers more power and optimised tool run time for superior all-round performance. Ergonomic composite housings reduce vibration, providing enhanced operator comfort and control.



BUILD YOUR OWN TOOL KIT OR CONSIDER OUR READY MADE KITS

1 Choose your tool

2 Choose your battery

1.5Ah 3Ah 4Ah

CP1200BP CP1200BP3 CP1200BP4

3 Add charger & bag...

CP1200MC CP1200CB

and you're good to go!

CP1200MC4A

A Ø10mm

VARIABLE SPEED
SV12 SERIES

A-B SEE RIGHT

12V Ø10mm Cordless Combi Drill/Driver

Compact, lightweight cordless drill/driver with added hammer function. Comfortable composite housing with soft grip to reduce vibration. Ø0.8-10mm Keyless chuck. 2-Speed settings and 21 torque settings provide the control required to complete various tasks. All metal gear construction for ultimate durability and performance. Integral LED battery level indicator and LED worklight. Supplied with belt hook for safer storage while not in use.

Impact Rate:	0-6000/0-1950bpm
No-Load Speed:	0-400/0-1300rpm
Maximum Torque:	25Nm
Drilling Capacities:	
Wood:	Ø20mm
Metal/Concrete:	Ø10mm
Chuck Size:	Ø10mm
Body Only Weight:	0.85kg

B

+ BATTERY (1.5Ah) x2
+ BATTERY CHARGER
+ STORAGE BAG

Model No:	Type:	Contents:
A CP1201	Body Only	Combi Drill/Driver
B CP1201KIT	Kit	CP1201 - Combi Drill/Driver CP1200BP - 1.5Ah Battery (x2) CP1200MC - Battery Charger CP1200CB - Canvas Storage Bag

C Ø71mm

VARIABLE SPEED
SV12 SERIES

C-D SEE RIGHT

12V Ø71mm Cordless Polisher Kit

Compact, lightweight cordless polisher. Comfortable composite housing with soft grip to reduce vibration. 2-Speed variable control trigger makes this polisher easy-to-use. Integral LED battery level indicator. Supplied with side handle, two foam pads and one wool polishing pad.

No-Load Speed:	0-2500rpm/0-7500rpm
Pad Size:	Ø71mm
Thread Size:	5/16"UNF
Body Only Weight:	0.77kg

D

+ BATTERY (1.5Ah) x2
+ BATTERY CHARGER
+ STORAGE BAG

Model No:	Type:	Contents:
C CP1205	Body Only	Polisher
D CP1205KIT	Kit	CP1205 - Polisher CP1200BP - 1.5Ah Battery (x2) CP1200MC - Battery Charger CP1200CB - Canvas Storage Bag



80Nm Torque

For 1/4" Hex Bits

A-B SEE RIGHT

12V 1/4" Hex Drive Cordless Impact Driver

Compact, lightweight cordless impact driver. Comfortable composite housing with soft grip to reduce vibration. Variable speed control trigger with lock function gives more control during application. All metal gear construction for ultimate durability and performance. Integrated LED battery level indicator and LED worklight. Supplied with belt hook for safer storage while not in use.

Drive:	1/4" Hex
Impact Rate:	0-3500bpm
No-Load Speed:	0-2500rpm
Maximum Torque:	80Nm(58lb.ft)
Body Only Weight:	0.80kg



+ BATTERY (1.5Ah) x2
+ BATTERY CHARGER
+ STORAGE BAG

Model No:	Type:	Contents:
A CP1203	Body Only	Impact Driver
B CP1203KIT	Kit	CP1203 - Impact Driver CP1200BP - 1.5Ah Battery (x2) CP1200MC - Battery Charger CP1200CB - Canvas Storage Bag



200W
Ø75mm

C-D SEE RIGHT

12V Ø75mm Cordless Angle Grinder

Compact, lightweight cordless mini angle grinder. Comfortable composite housing with soft grip to reduce vibration. Brushless motor allows for a longer lasting tool requiring less maintenance. Spindle lock for easy disc changes. Built-in battery charge level indicator. Cutting disc not included.

Disc Size:	Ø75mm
No-Load Speed:	19500rpm
Spindle Size:	M5
Motor Power:	200W
Optional Cutting Disc:	PTC/3C
Body Only Weight:	0.65kg



+ BATTERY (1.5Ah) x2
+ BATTERY CHARGER
+ STORAGE BAG

Model No:	Type:	Contents:
C CP1210	Body Only	Angle Grinder
D CP1210KIT	Kit	CP1210 - Angle Grinder CP1200BP - 1.5Ah Battery (x2) CP1200MC - Battery Charger CP1200CB - Canvas Storage Bag



E-F SEE RIGHT

12V Cordless Reciprocating Saw

Compact, lightweight cordless reciprocating saw. Comfortable composite housing with soft grip to reduce vibration. Quick blade change system. Variable speed trigger for greater control. Integral LED battery level indicator and LED worklight. Supplied with a metal cutting blade and a wood cutting blade. Trigger-lock for added safety.

No-Load Speed:	0-3000spm
Noise Power/Pressure:	95/84dB(A)
Stroke Length:	14.5mm
Vibration/Uncertainty:	13.78/1.5m/s ²
Body Only Weight:	1.07kg



+ BATTERY (1.5Ah) x2
+ BATTERY CHARGER
+ STORAGE BAG

Model No:	Type:	Contents:
E CP1208	Body Only	Reciprocating Saw
F CP1208KIT	Kit	CP1208 - Reciprocating Saw CP1200BP - 1.5Ah Battery (x2) CP1200MC - Battery Charger CP1200CB - Canvas Storage Bag

A

3/8"
Sq Drive

45Nm
Torque


A-B SEE RIGHT
12V 3/8" Sq Drive Cordless Ratchet Wrench

Compact, lightweight cordless ratchet wrench, allows access to tight spaces. Variable speed control trigger with lock function gives more control during application. Heavy-duty mechanical steel ratchet head with forward and reverse control. Robust composite housing with soft, comfortable grip. Integrated LED battery level indicator and LED worklight.

Drive:	3/8" Sq
No-Load Speed:	0-250rpm
Maximum Torque:	45Nm(33lb.ft)
Body Only Weight:	0.70kg

B

 + BATTERY (1.5Ah) x2
 + BATTERY CHARGER
 + STORAGE BAG


Model No:	Type:	Contents:
A CP1202	Body Only	Ratchet Wrench
B CP1202KIT	Kit	CP1202 - Ratchet Wrench CP1200BP - 1.5Ah Battery (x2) CP1200MC - Battery Charger CP1200CB - Canvas Storage Bag

C

1/2"
Sq Drive

80Nm
Torque

C-D SEE RIGHT
12V 1/2" Sq Drive Cordless Ratchet Wrench

Compact, lightweight cordless ratchet wrench, allows access to tight spaces. Variable speed trigger with safety lock. Heavy-duty mechanical steel ratchet head with forward and reverse control. Robust composite housing with soft, comfortable grip. Integrated LED battery level indicator and LED worklight.

Drive:	1/2" Sq
No-Load Speed:	0-200rpm
Maximum Torque:	80Nm(59lb.ft)
Body Only Weight:	1.16kg

D

 + BATTERY (1.5Ah) x2
 + BATTERY CHARGER
 + STORAGE BAG


Model No:	Type:	Contents:
C CP1209	Body Only	Ratchet Wrench
D CP1209KIT	Kit	CP1209 - Ratchet Wrench CP1200BP - 1.5Ah Battery (x2) CP1200MC - Battery Charger CP1200CB - Canvas Storage Bag

E

3/8"
Sq Drive

120Nm
Torque


E-F SEE RIGHT
12V 3/8" Sq Drive Cordless Impact Wrench

Compact, lightweight cordless impact wrench. Comfortable composite housing with soft grip to reduce vibration. Variable speed control trigger with lock function gives more control during application. All metal gear construction for ultimate durability and performance. Integrated LED battery level indicator and LED worklight. Supplied with belt hook for safer storage while not in use.

Drive:	3/8" Sq
Impact Rate:	0-3500bpm
No-Load Speed:	0-2500rpm
Breakaway Torque:	120Nm(89lb.ft)
Fastening Torque:	70Nm(52lb.ft)
Body Only Weight:	0.80kg

F

 + BATTERY (1.5Ah) x2
 + BATTERY CHARGER
 + STORAGE BAG


Model No:	Type:	Contents:
E CP1204	Body Only	Impact Wrench
F CP1204KIT	Kit	CP1204 - Impact Wrench CP1200BP - 1.5Ah Battery (x2) CP1200MC - Battery Charger CP1200CB - Canvas Storage Bag



+ BATTERY (1.5Ah) x2
+ BATTERY CHARGER
+ STORAGE BAG

A-B SEE RIGHT

12V 49pc Cordless Multipurpose Rotary Tool & Engraver Kit

Compact, lightweight cordless multipurpose rotary tool and engraver. Comfortable composite housing with soft grip to reduce vibration. 6-Speed settings provide the control required to complete various tasks. Quick release collet and spindle lock for fast tool changes. Supplied with a full range of tips, wheels, sanding discs, dressing stones and a chuck spanner. Integral LED battery level indicator.

No-Load Speed:	5000-25000rpm
Collets:	1, 1.5, 2, 2.4, 3.2mm
Contents:	HSS Drill Bits (x6), Mandrel (x2), Polishing Disc (x3), Grinding Disc (x4), Metal Brush, Cutting Disc (x16), Collet Chuck (x5), Synthetic Brush (x2), Milling Bits (x2), Engraving Bits (x2), Grinding Bits (x5), Combination Spanner
Body Only Weight:	0.39kg

Model No:	Type:	Contents:
A CP1207	Body Only	Rotary Tool
B CP1207KIT	Kit	CP1207 - Rotary Tool CP1200BP - 1.5Ah Battery (x2) CP1200MC - Battery Charger CP1200CB - Canvas Storage Bag



+ BATTERY (1.5Ah)
+ BATTERY CHARGER



C-D SEE RIGHT

360° 12V 8W COB LED Inspection Light

Unique and innovative 360° swivel and tilt function enables the light source to be positioned in any direction. Exclusive patented design owned and registered to Sealey. Each light houses a super bright COB LED providing up to 1000 lumens output with 120° spread of light, illuminating the whole work area. CRI 80+ with brightness of 6500K. Features swivel hook and a super strong magnet on the base, which allow hands-free operation.

LED Quantity:	1COB 8W
Lumen Output:	1000lm

Model No:	Type:	Contents:
C LED36012V	Body Only	Inspection Light
D LED36012VCOMBO1	Combo	LED36012V - Inspection Light CP1200BP - 1.5Ah Battery CP1200MC - Battery Charger



E-F SEE BELOW

12V Lithium-ion Fast Charge Battery Charger for SV12 Series

For recharging SV12, 12V lithium-ion battery series. Compatible battery packs; CP1200BP, CP1200BP3 and CP1200BP4.

Model No:	CP1200MC	CP1200MC4A
Supply:	230V~50Hz	230V~50Hz
Output:	12V DC	12.6V DC 4A
Weight:	0.32kg	0.355kg



G-I SEE BELOW

12V Li-ion Power Tool Batteries for SV12 Series

12V Lithium-ion power tool batteries for SV12 Series.

Model No:	CP1200BP	CP1200BP3	CP1200BP4
Battery:	12V 1.5Ah	12V 3Ah	12V 4Ah




A CP1200COMBO6
2 x 12V Cordless Power Tool Combo Kit

Refer to individual Model No. for full specification.

Contents:

CP1201 - Combi Drill/Driver	CP1200BP3 - 3Ah Battery
CP1203 - Impact Driver	CP1200MC - Battery Charger
CP1200BP - 1.5Ah Battery	CP1200CB - Canvas Storage Bag


B CP1200COMBO7
3 x 12V Cordless Power Tool Combo Kit

Refer to individual Model No. for full specification.

Contents:

CP1201 - Combi Drill/Driver	CP1200BP3 - 3Ah Battery
CP1205 - Polisher	CP1200MC - Battery Charger
CP1210 - Angle Grinder	CP1200CB - Canvas Storage Bag
CP1200BP - 1.5Ah Battery	


C CP1200COMBO8
2 x 12V Cordless Power Tool Combo Kit

Refer to individual Model No. for full specification.

Contents:

CP1204 - Impact Wrench	CP1200BP3 - 3Ah Battery
CP1209 - Ratchet Wrench	CP1200MC - Battery Charger
CP1200BP - 1.5Ah Battery	CP1200CB - Canvas Storage Bag


D CP1200COMBO
4 x 12V Cordless Power Tool Combo Kit

Refer to individual Model No. for full specification.

Contents:

CP1201 - Combi Drill/Driver	CP1200BP - 1.5Ah Battery
CP1202 - Ratchet Wrench	CP1200BP4 - 4Ah Battery
CP1203 - Impact Driver	CP1200MC - Battery Charger
CP1204 - Impact Wrench	CP1200CB - Canvas Storage Bag


E CP1200COMBO2
6 x 12V Cordless Power Tool Combo Kit

Refer to individual Model No. for full specification.

Contents:

CP1201 - Combi Drill/Driver	CP1207 - Rotary Tool
CP1202 - Ratchet Wrench	CP1200BP - 1.5Ah Battery
CP1203 - Impact Driver	CP1200BP4 - 4Ah Battery
CP1204 - Impact Wrench	CP1200MC - Battery Charger
CP1205 - Polisher	CP1200CB - Canvas Storage Bag



The SV20 20V Series

The Sealey SV20 Series, designed and produced for the professional – the perfect solution for all your power needs. Heavy-duty, high performance, durable tools with lightweight composite designs for superior control and comfort let you tackle any task with ease. With a wide range of advanced technology lithium battery options available, you can be sure that fast charging and longer runtimes can be achieved to meet the demands of any job at hand.



BUILD YOUR OWN TOOL KIT OR CONSIDER OUR READY MADE KITS

1 Choose your tool

SV20 Series contains over 35 tools.

2 Choose your battery

Three Battery options: 2Ah, 4Ah or 6Ah. The higher the Ah the longer the battery will last and the more power will be delivered. The lower the Ah the quicker the battery will charge.

2Ah	
CP20VBP2	
4Ah	
CP20VBP4	
6Ah	
CP20VBP6	

3 Add charger & bag...

Single Battery Charger		CP20VMC
Twin Battery Charger		CP20VMC2
Canvas Storage Bag		CP1200CB

and you're good to go!

A

1/2" Sq Drive
380Nm Torque

VARIABLE SPEED
SV20 SERIES

B

+ BATTERY (4Ah)
+ BATTERY CHARGER
+ STORAGE BAG

C

+ BATTERY (4Ah) x2
+ BATTERY CHARGER
+ STORAGE BAG

A-C SEE RIGHT

20V 1/2" Sq Drive Cordless Impact Wrench

Powerful, lightweight cordless impact wrench. Durable composite housing with soft grip for added comfort. Variable speed trigger switch for easy control. All metal gear construction for ultimate durability and performance. Built-in LED worklight. Forward, reverse and trigger-lock. Fitted with electronic brake. Supplied with belt hook for safer storage whilst not in use.

Drive:	1/2" Sq
No-Load Speed:	0-2200rpm
Impact Rate:	0-3000bpm
Breakaway Torque:	380Nm(280lb.ft)
Fastening Torque:	285Nm(210lb.ft)
Noise Power/Pressure:	106/95dB(A)
Vibration/Uncertainty:	15.87/1.5m/s ²
Body Only Weight:	1.18kg

Model No:	Type:	Contents:
A CP20VIW	Body Only	Impact Wrench
B CP20VIWKIT1	Kit	CP20VIW - Impact Wrench CP20VBP4 - 4Ah Battery CP20VMC - Battery Charger CP1200CB - Canvas Storage Bag
C CP20VIWKIT	Kit	CP20VIW - Impact Wrench CP20VBP4 - 4Ah Battery (x2) CP20VMC - Battery Charger CP1200CB - Canvas Storage Bag



A-C SEE RIGHT

20V 1/2\"/>

Powerful, lightweight cordless impact wrench. Durable composite housing with soft grip for added comfort. Brushless motor, which gives an improved performance and requires less maintenance than the brushed equivalent, giving you a more efficient, longer lasting tool. Variable speed trigger for easy control. All metal gear construction for ultimate durability and performance. Built-in LED worklight. Forward, reverse and trigger-lock. Supplied with belt hook for safer storage whilst not in use.

Drive:	1/2\"/>
Impact Rate:	0-3780bpm
No-Load Speed:	0-2700rpm
Breakaway Torque:	350Nm(258lb.ft)
Fastening Torque:	240Nm(177lb.ft)
Noise Power/Pressure:	80/69dB(A)
Vibration/Uncertainty:	3.845/1.5m/s ²
Body Only Weight:	1.16kg



Model No:	Type:	Contents:
A CP20VIWX	Body Only	Impact Wrench
B CP20VIWXKIT1	Kit	CP20VIWX - Impact Wrench CP20VBP4 - 4Ah Battery CP20VMC - Battery Charger CP1200CB - Canvas Storage Bag
C CP20VIWXKIT	Kit	CP20VIWX - Impact Wrench CP20VBP4 - 4Ah Battery (x2) CP20VMC - Battery Charger CP1200CB - Canvas Storage Bag



Brushless motors work more efficiently, adapting to the resistance of the task and drawing only the required voltage from the battery. This means they last longer, have improved performance and require less maintenance than the traditional brushed equivalents.



D-F SEE RIGHT

20V 1/2\"/>

Powerful, lightweight cordless impact wrench. Durable double injection composite housing with soft grip for added comfort. Produces torque of up to 700Nm. Brushless motor, which gives an improved performance and requires less maintenance than the brushed equivalent, giving you a more efficient, longer lasting tool. Variable speed trigger switch for easy control. Forward, reverse and trigger-lock. Fitted with electronic brake.

Drive:	1/2\"/>
Impact Rate:	0-3250bpm
No-Load Speed:	0-2750rpm
Breakaway Torque:	700Nm(516lb.ft)
Fastening Torque:	565Nm(417lb.ft)
Noise Power/Pressure:	94/105dB(A)
Vibration/Uncertainty:	29.89/1.5m/s ²
Body Only Weight:	1.64kg



Model No:	Type:	Contents:
D CP20VPIW	Body Only	Impact Wrench
E CP20VPIWKIT1	Kit	CP20VPIW - Impact Wrench CP20VBP4 - 4Ah Battery CP20VMC - Battery Charger CP1200CB - Canvas Storage Bag
F CP20VPIWKIT	Kit	CP20VPIW - Impact Wrench CP20VBP4 - 4Ah Battery (x2) CP20VMC - Battery Charger CP1200CB - Canvas Storage Bag

A For 1/4" Hex Bits

VARIABLE
SPEEDSV20
SERIES

B

+ BATTERY (2Ah)
+ BATTERY CHARGER
+ STORAGE BAG

C

+ BATTERY (2Ah)
+ BATTERY (4Ah)
+ BATTERY CHARGER
+ STORAGE BAG

A-C SEE RIGHT

20V 1/4"Hex Drive Cordless Impact Driver

Powerful, lightweight cordless impact driver. Durable composite housing with soft grip for added comfort. 1/4"Hex quick release chuck. Variable speed control trigger. All metal gear construction for ultimate durability and performance. Forward, reverse and trigger-lock. Built-in LED worklight. Supplied with belt hook for safer storage whilst not in use.

Drive:	1/4"Hex
Impact Rate:	0-3000bpm
No-Load Speed:	0-2200rpm
Maximum Torque:	180Nm
Noise Power/Pressure:	106/95dB(A)
Vibration/Uncertainty:	15.87/1.5m/s ²
Body Only Weight:	1.17kg

Model No:	Type:	Contents:
A CP20VID	Body Only	Impact Driver
B CP20VIDKIT1	Kit	CP20VID - Impact Driver CP20VBP2 - 2Ah Battery CP20VMC - Battery Charger CP1200CB - Canvas Storage Bag
C CP20VIDKIT	Kit	CP20VID - Impact Driver CP20VBP2 - 2Ah Battery CP20VBP4 - 4Ah Battery CP20VMC - Battery Charger CP1200CB - Canvas Storage Bag

D

Premier

200Nm
Torque

For 1/4" Hex Bits

VARIABLE
SPEEDSV20
SERIES3 YEAR
GUARANTEE*BRUSHLESS
MOTOR

D-F SEE RIGHT

20V 1/4"Hex Cordless - Brushless Impact Driver

Powerful, lightweight cordless impact driver. Brushless motor, which gives an improved performance and requires less maintenance than the brushed equivalent, giving you a more efficient, longer lasting tool. Durable composite housing with soft grip for added comfort. 1/4"Hex quick release chuck. Variable speed control trigger. Three speed options in forward, two speed options in reverse and trigger-lock. All metal gear construction for ultimate durability and performance. Built-in LED worklight. Supplied with belt hook for safer storage whilst not in use.

Drive:	1/4"Hex
Impact Rate:	0-3780bpm
No-Load Speed:	0-2700rpm
Maximum Torque:	200Nm
Noise Power/Pressure:	80/69dB(A)
Vibration/Uncertainty:	3.845/1.5m/s ²
Body Only Weight:	1.25kg

E

+ BATTERY (2Ah)
+ BATTERY CHARGER
+ STORAGE BAG

F

+ BATTERY (2Ah)
+ BATTERY (4Ah)
+ BATTERY CHARGER
+ STORAGE BAG

Model No:	Type:	Contents:
D CP20VIDX	Body Only	Impact Driver
E CP20VIDXKIT1	Kit	CP20VIDX - Impact Driver CP20VBP2 - 2Ah Battery CP20VMC - Battery Charger CP1200CB - Canvas Storage Bag
F CP20VIDXKIT	Kit	CP20VIDX - Impact Driver CP20VBP2 - 2Ah Battery CP20VBP4 - 4Ah Battery CP20VMC - Battery Charger CP1200CB - Canvas Storage Bag


A-C SEE RIGHT
20V Ø13mm Cordless Combi Drill/Driver

Powerful, lightweight cordless drill/driver with hammer function. Durable composite housing with soft grip for added comfort. Ø2-13mm Keyless chuck. All metal gear construction for ultimate durability and performance. Three drill functions and 18 torque settings provide the control required to complete various tasks. Built-in LED worklight. Forward, reverse and trigger-lock. Supplied with belt hook for safer storage whilst not in use.

Impact Rate:	0-6000bpm/0-22500bpm
No-Load Speed:	0-400/0-1500rpm
Drilling Capacities:	
Wood:	Ø35mm
Metal/Concrete:	Ø13mm
Chuck Size:	Ø13mm
Maximum Torque:	35Nm
Noise Power/Pressure:	97/86dB(A)
Vibration/Uncertainty:	2.546/1.5m/s ²
Body Only Weight:	1.25kg


D-F SEE RIGHT
20V Ø13mm Cordless Brushless Combi Drill/Driver

Powerful, lightweight cordless drill/driver with hammer function. Brushless motor, which gives an improved performance and requires less maintenance than the brushed equivalent, giving you a more efficient, longer lasting tool. Durable composite housing with soft grip for added comfort. Ø2-13mm Keyless chuck. All metal gear construction for ultimate durability and performance. Three drill functions and 21 torque settings provide the control required to complete various tasks. Built-in LED worklight. Forward, reverse and trigger-lock. Supplied with belt hook for safer storage whilst not in use.

Chuck Size:	Ø13mm
Impact Rate:	0-30000bpm
No-Load Speed:	0-2000rpm
Maximum Torque:	65Nm
Noise Power/Pressure:	86/75dB(A)
Vibration/Uncertainty:	3.054/1.5m/s ²
Drilling Capacities:	
Wood:	Ø35mm
Concrete:	Ø13mm
Metal:	Ø13mm
Body Only Weight:	1.25kg



Model No:	Type:	Contents:
A CP20VDD	Body Only	Combi Drill/Driver
B CP20VDDKIT1	Kit	CP20VDD - Combi Drill/Driver CP20VBP2 - 2Ah Battery CP20VMC - Battery Charger CP1200CB - Canvas Storage Bag
C CP20VDDKIT	Kit	CP20VDD - Combi Drill/Driver CP20VBP2 - 2Ah Battery CP20VBP4 - 4Ah Battery CP20VMC - Battery Charger CP1200CB - Canvas Storage Bag



Model No:	Type:	Contents:
D CP20VDDX	Body Only	Combi Drill/Driver
E CP20VDDXKIT1	Kit	CP20VDDX - Combi Drill/Driver CP20VBP2 - 2Ah Battery CP20VMC - Battery Charger CP1200CB - Canvas Storage Bag
F CP20VDDXKIT	Kit	CP20VDDX - Combi Drill/Driver CP20VBP2 - 2Ah Battery CP20VBP4 - 4Ah Battery CP20VMC - Battery Charger CP1200CB - Canvas Storage Bag



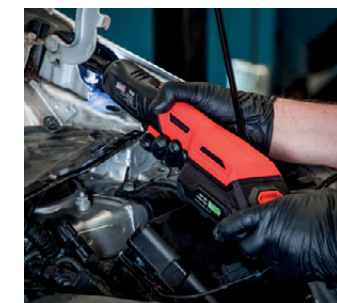
A-C SEE RIGHT

20V SDS Plus Cordless Rotary Hammer Drill

Powerful, lightweight cordless rotary hammer drill. Durable composite housing with soft grip for added comfort. SDS Plus chuck. Two drilling functions; rotary and rotary with hammer. Built-in LED worklight. Forward, reverse and trigger lock. Variable speed trigger for greater control.

Impact Rate:	0-5000bpm
No-Load Speed:	0-900rpm
Drilling Capacities:	
Wood:	Ø16mm
Metal:	Ø8mm
Concrete:	Ø10mm
Chuck Size:	SDS Plus
Noise Power/Pressure:	96/85dB(A)
Vibration/Uncertainty:	8.64/1.5m/s ²
Body Only Weight:	1.25kg

Model No:	Type:	Contents:
A CP20VSDS	Body Only	Rotary Hammer Drill
B CP20VSDSKIT1	Kit	CP20VSDS - Rotary Hammer Drill CP20VBP2 - 2Ah Battery CP20VMC - Battery Charger CP1200CB - Canvas Storage Bag
C CP20VSDSKIT	Kit	CP20VSDS - Rotary Hammer Drill CP20VBP2 - 2Ah Battery CP20VBP4 - 4Ah Battery CP20VMC - Battery Charger CP1200CB - Canvas Storage Bag



D-F SEE RIGHT

20V 3/8" Sq Drive Cordless Ratchet Wrench

Durable composite housing and soft grip for added comfort. Variable speed trigger for easy control. Forward and reverse rotation and trigger-lock. Fitted with electronic brake. Built-in LED worklight for low visibility areas.

Drive:	3/8" Sq
Maximum Torque:	60Nm
Noise Power/Pressure:	100/89dB(A)
No-Load Speed:	0-250rpm
Vibration/Uncertainty:	7.972/1.5m/s ²
Body Only Weight:	0.84kg

Model No:	Type:	Contents:
D CP20VRW	Body Only	Ratchet Wrench
E CP20VRWKIT1	Kit	CP20VRW - Ratchet Wrench CP20VBP4 - 4Ah Battery CP20VMC - Battery Charger CP1200CB - Canvas Storage Bag
F CP20VRWKIT	Kit	CP20VRW - Ratchet Wrench CP20VBP4 - 4Ah Battery (x2) CP20VMC - Battery Charger CP1200CB - Canvas Storage Bag

A



SV20
SERIES

3 YEAR
GUARANTEE*

Ø115mm

A-C SEE RIGHT

20V Ø115mm Cordless Angle Grinder

Lightweight, compact and ergonomically designed. Features heavy-duty alloy bevel gear head with aluminium gear casing. Features spindle lock for quick disc changes and adjustable disc guard. Supplied with side handle and soft grip for added comfort and control.

Motor Power:	700W
Disc Size:	Ø115mm
No-Load Speed:	10000rpm
Spindle Size:	M14 x 2mm
Noise Power/Pressure:	95/84dB(A)
Vibration/Uncertainty:	4.019/1.5m/s ²
Optional Grinding Disc:	PTC/115G
Body Only Weight:	1.44kg

B



+ BATTERY (4Ah)
+ BATTERY CHARGER
+ STORAGE BAG

C



+ BATTERY (4Ah) x2
+ BATTERY CHARGER
+ STORAGE BAG

Model No:	Type:	Contents:
A CP20VAGB	Body Only	Angle Grinder
B CP20VAGBKIT1	Kit	CP20VAGB - Angle Grinder CP20VBP4 - 4Ah Battery CP20VMC - Battery Charger CP1200CB - Canvas Storage Bag
C CP20VAGBKIT	Kit	CP20VAGB - Angle Grinder CP20VBP4 - 4Ah Battery (x2) CP20VMC - Battery Charger CP1200CB - Canvas Storage Bag

D Premier



SV20
SERIES

3 YEAR
GUARANTEE*

Ø115mm

BRUSHLESS
MOTOR

D-F SEE RIGHT

20V Ø115mm Cordless - Brushless Angle Grinder

Ergonomic, lightweight and compact design. Brushless motor, which gives an improved performance and requires less maintenance than the brushed equivalent, giving you a more efficient, longer lasting tool. Features spindle lock for quick disc changes and adjustable disc guard. Supplied with side/top handle and soft grip for added comfort and control. Slide on/off lock on switch.

Motor Power:	700W
Disc Size:	Ø115mm
No-Load Speed:	10000rpm
Spindle Size:	M14
Noise Power/Pressure:	97/86dB(A)
Vibration/Uncertainty:	5.598/1.5m/s ²
Optional Grinding Disc:	PTC/115G
Optional Cutting Disc:	PTC/115C
Body Weight:	1.60kg

E



+ BATTERY (4Ah)
+ BATTERY CHARGER
+ STORAGE BAG

F



+ BATTERY (4Ah) x2
+ BATTERY CHARGER
+ STORAGE BAG

Model No:	Type:	Contents:
D CP20VAGX	Body Only	Angle Grinder
E CP20VAGXKIT1	Kit	CP20VAGX - Angle Grinder CP20VBP4 - 4Ah Battery CP20VMC - Battery Charger CP1200CB - Canvas Storage Bag
F CP20VAGXKIT	Kit	CP20VAGX - Angle Grinder CP20VBP4 - 4Ah Battery (x2) CP20VMC - Battery Charger CP1200CB - Canvas Storage Bag



SV20
SERIES

A-C SEE RIGHT

20V Ø125mm Cordless Random Orbital Palm Sander

Powerful, cordless, lightweight orbital sander. Durable composite housing with soft grip for added comfort. 3-Speed settings gives control to complete various tasks. Features a self-contained dust extraction port with dust collection bag. Fitted with Ø125mm hook-and-loop backing pad and supplied with two sanding discs.

No-Load Speed:	5000/7000/9000rpm
Pad Size:	Ø125mm
Body Only Weight:	1.12kg

Model No:	Type:	Contents:
A CP20VOS	Body Only	Orbital Palm Sander
B CP20VOSKIT1	Kit	CP20VOS - Orbital Palm Sander CP20VBP2 - 2Ah Battery CP20VMC - Battery Charger CP1200CB - Canvas Storage Bag
C CP20VOSKIT2	Kit	CP20VOS - Orbital Palm Sander CP20VBP2 - 2Ah Battery CP20VBP4 - 4Ah Battery CP20VMC - Battery Charger CP1200CB - Canvas Storage Bag



D-F SEE RIGHT

20V Ø125mm Cordless Orbital Polisher

Digital display and variable speed control from 2100-5000rpm. 15mm Orbit for greater polishing efficiency. Features a slide-button on/off switch allowing for a smooth comfortable main handle grip. Spindle lock for fast and easy pad changes. Double injection composite housing with rubber grip for added comfort. Supplied with Ø125mm backing pad.

No-Load Speed:	2100-5000rpm
Pad Size:	Ø125mm
Noise Power/Pressure:	86/75dB(A)
Vibration/Uncertainty:	4.56/1.5m/s ²
Body Only Weight:	1.82kg

Model No:	Type:	Contents:
D CP20VOP	Body Only	Orbital Polisher
E CP20VOPKIT1	Kit	CP20VOP - Orbital Polisher CP20VBP4 - 4Ah Battery CP20VMC - Battery Charger CP1200CB - Canvas Storage Bag
F CP20VOPKIT2	Kit	CP20VOP - Orbital Polisher CP20VBP4 - 4Ah Battery (x2) CP20VMC - Battery Charger CP1200CB - Canvas Storage Bag



A-C SEE RIGHT

20V Ø150mm Cordless Rotary Polisher

Digital display and variable speed control from 500-3000rpm. Features a slide-button on/off switch allowing for a smooth comfortable main handle grip. Spindle lock for fast and easy pad changes. Double injection composite housing with rubber grip for added comfort. Supplied with Ø150mm backing pad and side handle.

No-Load Speed:	500-3000rpm
Pad Size:	Ø150mm
Noise Power/Pressure:	85/74dB(A)
Vibration/Uncertainty:	8.27/1.5m/s ²
Replacement Pad:	PTC/150VA/M14
Body Only Weight:	1.3kg



Model No:	Type:	Contents:
A CP20VRP	Body Only	Rotary Polisher
B CP20VRPKIT	Kit	CP20VRP - Rotary Polisher CP20VBP4 - 4Ah Battery CP20VMC - Battery Charger CP1200CB - Canvas Storage Bag
C CP20VRPKIT2	Kit	CP20VRP - Rotary Polisher CP20VBP4 - 4Ah Battery (x2) CP20VMC - Battery Charger CP1200CB - Canvas Storage Bag



D-F SEE RIGHT

20V Ø180mm Cordless - Brushless Rotary Polisher

Powerful cordless rotary polisher. Brushless motor gives superior performance and durability. Durable composite housing with soft grip for added comfort. Ø180mm Backing pad. 6-Speed settings and variable speed trigger with lock offer complete control required for any given task. With two handle positions, up and over or side for personal preference. Supplied with two interchangeable polishing pad heads and key for quick backing pad changes.

No-Load Speed:	800-2300rpm
Noise Power/Pressure:	89/78dB(A)
Pad Size:	Ø180mm
Thread Size:	M14
Vibration/Uncertainty:	5.39/1.5m/s ²
Body Only Weight:	1.77kg



Model No:	Type:	Contents:
D CP20VRPX	Body Only	Rotary Polisher
E CP20VRPXKIT1	Kit	CP20VRPX - Rotary Polisher CP20VBP4 - 4Ah Battery CP20VMC - Battery Charger CP1200CB - Canvas Storage Bag
F CP20VRPXKIT	Kit	CP20VRPX - Rotary Polisher CP20VBP4 - 4Ah Battery (x2) CP20VMC - Battery Charger CP1200CB - Canvas Storage Bag



Complete with two blades.



VARIABLE
SPEED

SV20
SERIES



+ BATTERY (2Ah)
+ BATTERY CHARGER
+ STORAGE BAG



+ BATTERY (2Ah)
+ BATTERY (4Ah)
+ BATTERY CHARGER
+ STORAGE BAG

A-C SEE RIGHT

20V Cordless Reciprocating Saw

Powerful, lightweight cordless reciprocating saw suitable for cutting wood, board and soft metals. Durable composite housing with soft grip for added comfort. Built-in quick blade change system. Variable speed control trigger switch. Supplied with wood (6tpi) and metal (18tpi) cutting blades. 2-Stage operation switch for added safety.

No-Load Speed:	0-3000spm
Noise Power/Pressure:	93/82dB(A)
Vibration/Uncertainty:	19.682/1.5m/s ²
Cutting Specifications:	
Wood:	115mm
Metal:	10mm
Stroke Length:	22mm
Replacement Blades:	SRBR622EF/SRBS811D
Body Only Weight:	1.73kg

Model No:	Type:	Contents:
A CP20VRS	Body Only	Reciprocating Saw
B CP20VRSKIT1	Kit	CP20VRS - Reciprocating Saw CP20VBP2 - 2Ah Battery CP20VMC - Battery Charger CP1200CB - Canvas Storage Bag
C CP20VRSKIT	Kit	CP20VRS - Reciprocating Saw CP20VBP2 - 2Ah Battery CP20VBP4 - 4Ah Battery CP20VMC - Battery Charger CP1200CB - Canvas Storage Bag



D NEW Premier

VARIABLE
SPEED

SV20
SERIES



3 YEAR
GUARANTEE*

D-F SEE RIGHT

20V Cordless - Brushless Reciprocating Saw

Powerful brushless and cordless reciprocating saw suitable for cutting wood, board and soft metals. Durable composite housing with soft grip for added comfort. Keyless blade change system. Blade is controlled by a variable speed trigger switch with a brushless motor that runs to a maximum speed of 3100spm. 2-Stage operation switch for added safety. Built-in LED worklight for use in low light areas.

No-Load Speed:	0-3100spm
Noise Power/Pressure:	90/79dB(A)
Vibration/Uncertainty:	8.20/1.5m/s ²
Cutting Specifications:	
Wood:	120mm
Metal:	10mm
Stroke Length:	28mm
Replacement Blades:	WRS3021/150
Body Only Weight:	2.26kg



+ BATTERY (4Ah)
+ BATTERY CHARGER
+ STORAGE BAG



+ BATTERY (4Ah) x2
+ BATTERY CHARGER
+ STORAGE BAG

Model No:	Type:	Contents:
D CP20VRSX	Body Only	Reciprocating Saw
E CP20VRSXKIT1	Kit	CP20VRSX - Reciprocating Saw CP20VBP4 - 4Ah Battery CP20VMC - Battery Charger CP1200CB - Canvas Storage Bag
F CP20VRSXKIT	Kit	CP20VRSX - Reciprocating Saw CP20VBP4 - 4Ah Battery (x2) CP20VMC - Battery Charger CP1200CB - Canvas Storage Bag

A

Ø150mm



SV20
SERIES

A-C SEE RIGHT

20V Ø150mm Cordless Circular Saw

Powerful, lightweight cordless circular saw suitable for cutting wood, board and soft metals. Durable composite housing with soft grip for added comfort. Tool-free adjustment of cutting angle, depth and width. Built-in laser guide for accurate cutting. Supplied with Ø150mm saw blade. 2-Stage operation switch for added safety.

No-Load Speed:	4200rpm
Cutting Depths:	
Cutting Depth at 90°:	48mm
Cutting Depth at 45°:	33mm
Blade Diameter:	Ø150mm
Disc Bore Size:	Ø10mm
Replacement Blade:	CP20VCS.03
Body Only Weight:	2.54kg

B



+ BATTERY (2Ah)
+ BATTERY CHARGER
+ STORAGE BAG

C



+ BATTERY (2Ah)
+ BATTERY (4Ah)
+ BATTERY CHARGER
+ STORAGE BAG

Model No:	Type:	Contents:
A CP20VCS	Body Only	Circular Saw
B CP20VCSKIT1	Kit	CP20VCS - Circular Saw CP20VBP2 - 2Ah Battery CP20VMC - Battery Charger CP1200CB - Canvas Storage Bag
C CP20VCSKIT	Kit	CP20VCS - Circular Saw CP20VBP2 - 2Ah Battery CP20VBP4 - 4Ah Battery CP20VMC - Battery Charger CP1200CB - Canvas Storage Bag

D



VARIABLE SPEED **SV20**
SERIES

D-F SEE RIGHT

20V Cordless Jigsaw

Powerful, lightweight cordless jigsaw suitable for cutting wood, board, plastic and steel. Comfortable composite housing with soft grip for added comfort. Tool-free blade change system. Variable speed control trigger switch 0-2400spm. Features dust blow and extraction function, and parallel guide. Built-in LED worklight. Four pendulum settings. 2-Stage operation switch for added safety. Supplied with hex key and wood cutting blade.

No-Load Speed:	0-2400spm
Cutting Specifications:	
Wood:	80mm
Plastic:	12mm
Steel:	10mm
Metal Pipe:	Ø5-25mm
Noise Power/Pressure:	90/79db(A)
Stroke Length:	25mm
Vibration/Uncertainty:	11.18/1.5m/s ²
Body Only Weight:	2kg

E



+ BATTERY (2Ah)
+ BATTERY CHARGER
+ STORAGE BAG

F



+ BATTERY (2Ah)
+ BATTERY (4Ah)
+ BATTERY CHARGER
+ STORAGE BAG

Model No:	Type:	Contents:
D CP20VJS	Body Only	Jigsaw
E CP20VJSKIT1	Kit	CP20VJS - Jigsaw CP20VBP2 - 2Ah Battery CP20VMC - Battery Charger CP1200CB - Canvas Storage Bag
F CP20VJSKIT	Kit	CP20VJS - Jigsaw CP20VBP2 - 2Ah Battery CP20VBP4 - 4Ah Battery CP20VMC - Battery Charger CP1200CB - Canvas Storage Bag

A NEW



BRUSHLESS MOTOR



For optional Router Plunge Base order Model No. RPB01

VARIABLE SPEED

SV20 SERIES

A-C SEE RIGHT

20V Cordless Trimming Router

Powerful router with brushless motor, suitable for edge forming, trimming, decorative work and slot cutting. Lightweight composite housing for comfortable use. Variable 5-Speed control from 12000-28000rpm. Adjustable stroke length of 0-35mm. Supplied with trimmer section, trimmer guide, straight guide, two spanners and 1/4" 6mm collet. Built-in dual LED worklights for increased visibility and accuracy. Plunge base available separately, order Model No. RPB01.

No-Load Speed:	12000-28000rpm
Stroke Length:	0-35mm
Collet Capacity/Size:	1/4" or 6mm
Optional Router Plunge Base:	RPB01
Body Only Weight:	1.59kg

B NEW



+ BATTERY (2Ah)
+ BATTERY CHARGER
+ STORAGE BAG



C NEW



+ BATTERY (2Ah)
+ BATTERY (4Ah)
+ BATTERY CHARGER
+ STORAGE BAG



Model No:	Type:	Contents:
A CP20VTR	Body Only	Trimming Router
B CP20VTRKIT1	Kit	CP20VTR - Trimming Router CP20VBP2 - 2Ah Battery CP20VMC - Battery Charger CP1200CB - Canvas Storage Bag
C CP20VTRKIT	Kit	CP20VTR - Trimming Router CP20VBP2 - 2Ah Battery CP20VBP4 - 4Ah Battery CP20VMC - Battery Charger CP1200CB - Canvas Storage Bag

D



VARIABLE SPEED

SV20 SERIES

D-F SEE RIGHT

20V Cordless Oscillating Multi-Tool

Durable composite housing with soft grip for added comfort. One tool suitable for multiple tasks such as sanding, scraping and cutting various materials. Built-in LED worklight, 6-speed settings and quick blade change system. Includes sanding paper, backing pad, plunge saw blade, segment saw blade and scraper.

No-Load Speed:	5000-20000rpm
Noise Power/Pressure:	108/97dB(A)
Vibration/Uncertainty:	15.258/1.5m/s ²
Accessories:	Sanding Pads, Backing Pad, Scraper, Segment Saw Blade, Plunge Saw Blade
Body Only Weight:	1.04kg

E



+ BATTERY (2Ah)
+ BATTERY CHARGER
+ STORAGE BAG



F



+ BATTERY (2Ah)
+ BATTERY (4Ah)
+ BATTERY CHARGER
+ STORAGE BAG



Model No:	Type:	Contents:
D CP20VMT	Body Only	Oscillating Multi-Tool
E CP20VMTKIT1	Kit	CP20VMT - Oscillating Multi-Tool CP20VBP2 - 2Ah Battery CP20VMC - Battery Charger CP1200CB - Canvas Storage Bag
F CP20VMTKIT	Kit	CP20VMT - Oscillating Multi-Tool CP20VBP2 - 2Ah Battery CP20VBP4 - 4Ah Battery CP20VMC - Battery Charger CP1200CB - Canvas Storage Bag

A NEW



A-C SEE RIGHT

20V Cordless Hot Air Gun

Lightweight, cordless hot air gun with a maximum temperature of 550°C. Suitable for paint stripping, soft soldering, removing sticky labels and defrosting frozen pipes. Spring loaded, rotating end bezel for removing hot nozzles quickly and easily. Integrated belt hook. Built-in LED worklight. Supplied with fish tail nozzle, deflector nozzle and reduction nozzle.

Temperature Range:	0-550°C
Airflow:	200L/min
Body Only Weight:	0.61kg

B NEW



+ BATTERY (2Ah)
+ BATTERY CHARGER
+ STORAGE BAG



C NEW



+ BATTERY (2Ah)
+ BATTERY (4Ah)
+ BATTERY CHARGER
+ STORAGE BAG



Model No:	Type:	Contents:
A CP20VHG	Body Only	Hot Air Gun
B CP20VHGKIT	Kit	CP20VHG - Hot Air Gun CP20VBP2 - 2Ah Battery CP20VMC - Battery Charger CP1200CB - Canvas Storage Bag
C CP20VHGKIT2	Kit	CP20VHG - Hot Air Gun CP20VBP2 - 2Ah Battery CP20VBP4 - 4Ah Battery CP20VMC - Battery Charger CP1200CB - Canvas Storage Bag

D



D-F SEE RIGHT

20V 18G Cordless Staple/Nail Gun

Powerful, compact cordless nail and staple gun can drive up to 50mm 18G nails or 40mm 18G staples into wood, without compressed air or mains power supply. Robust composite housing incorporates two LED lights for use in low light areas. Selectable single or contact firing allows use for different applications. Features an adjustable drive depth wheel for accurate results. Safety trigger device prevents accidental firing of nails or staples.

Nail Capacity:	10-50mm 18SWG
Staple Capacity:	10-40mm 18SWG
Noise Power/Pressure:	91/80dB(A)
Vibration/Uncertainty:	1.39/1.5m/s ²
Replacement Staples & Nails:	SAAN1810/SAAS1810
Body Only Weight:	2.6kg

E



+ BATTERY (2Ah)
+ BATTERY CHARGER
+ STORAGE BAG



F



+ BATTERY (2Ah)
+ BATTERY (4Ah)
+ BATTERY CHARGER
+ STORAGE BAG



Model No:	Type:	Contents:
D CP20VNG	Body Only	Staple/Nail Gun
E CP20VNGKIT1	Kit	CP20VNG - Staple/Nail Gun CP20VBP2 - 2Ah Battery CP20VMC - Battery Charger CP1200CB - Canvas Storage Bag
F CP20VNGKIT	Kit	CP20VNG - Staple/Nail Gun CP20VBP2 - 2Ah Battery CP20VBP4 - 4Ah Battery CP20VMC - Battery Charger CP1200CB - Canvas Storage Bag

A NEW



A-C SEE RIGHT

20V 310ml Cordless Caulking Gun

Cordless 20V caulkungun with cartridge holder. 6-Speed variable setting optimises the flow rate aiding precision. Suitable for 310ml cartridges. Includes LED worklight and large plunger to ensure constant flow. Cordless operation allows the gun to be used anywhere in workshops and homes. Composite housing with soft grip for added comfort.

Body Only Weight: 2.07kg

B NEW



+ BATTERY (2Ah)
+ BATTERY CHARGER
+ STORAGE BAG

C NEW



+ BATTERY (2Ah)
+ BATTERY (4Ah)
+ BATTERY CHARGER
+ STORAGE BAG

Model No:	Type:	Contents:
A CP20VCG	Body Only	Caulking Gun
B CP20VCGKIT1	Kit	CP20VCG - Caulking Gun CP20VBP2 - 2Ah Battery CP20VMC - Battery Charger CP1200CB - Canvas Storage Bag
C CP20VCGKIT	Kit	CP20VCG - Caulking Gun CP20VBP2 - 2Ah Battery CP20VBP4 - 4Ah Battery CP20VMC - Battery Charger CP1200CB - Canvas Storage Bag

D



D-F SEE RIGHT

20V Cordless Glue Gun

Ready to use in 3 minutes. Cordless operation allows use anywhere in the workshop. Composite housing with soft grip for added comfort. Suitable for glue sticks between Ø10-12mm. On/off switch and trigger feed control.

Maximum Running Time: 3.5hr
Glue Stick Diameter: Ø10-12mm
Consumable Parts: AK292/2 - All Purpose Glue Stick Pack of 25
Body Only Weight: 0.36kg

E



+ BATTERY (2Ah)
+ BATTERY CHARGER
+ STORAGE BAG

F



+ BATTERY (2Ah) x2
+ BATTERY CHARGER
+ STORAGE BAG

Model No:	Type:	Contents:
D CP20VGG	Body Only	Glue Gun
E CP20VGGKIT1	Kit	CP20VGG - Glue Gun CP20VBP2 - 2Ah Battery CP20VMC - Battery Charger CP1200CB - Canvas Storage Bag
F CP20VGGKIT	Kit	CP20VGG - Glue Gun CP20VBP2 - 2Ah Battery (x2) CP20VMC - Battery Charger CP1200CB - Canvas Storage Bag

A



A-C SEE RIGHT

20V Cordless Tyre Inflator

Handheld cordless tyre inflator. Digital LED display. Pressure can be set in either psi or bar. Automatic cut-out when pre-selected pressure has been reached. Double injection composite body with rubber grips for added comfort and vibration reduction. Supplied with 150mm compressor hose with tyre valve, ball needle, bike tyre valves (x2) and universal adaptors (x3).

Maximum Air Pressure:	7bar/100psi
Typical Inflation Time:	0-30psi in 205sec (175/70R)
Body Only Weight:	0.70kg

B



+ BATTERY (2Ah)
+ BATTERY CHARGER
+ STORAGE BAG

C



+ BATTERY (2Ah) x2
+ BATTERY CHARGER
+ STORAGE BAG

Model No:	Type:	Contents:
A CP20VAP	Body Only	Tyre Inflator
B CP20VAPKIT1	Kit	CP20VAP - Tyre Inflator CP20VBP2 - 2Ah Battery CP20VMC - Battery Charger CP1200CB - Canvas Storage Bag
C CP20VAPKIT	Kit	CP20VAP - Tyre Inflator CP20VBP2 - 2Ah Battery (x2) CP20VMC - Battery Charger CP1200CB - Canvas Storage Bag

D NEW



D-F SEE RIGHT

20V Cordless Pressure Washer

Lightweight and portable cordless pressure washer. Ideal for cleaning muddy bikes and sports equipment, as well as gutters, conservatory roofs and other hard-to-reach places. 6-Function nozzles, selected by turning spray head. 120L/hr Flow rate with a working pressure of 22bar. 6m water intake hose with float and filter can draw water from any remote source. Supplied with soap pot.

Maximum Pressure:	22bar(320psi)
Water Flow Rate:	120L/hr
Motor Power:	130W
Hose Length:	6m
Body Only Weight:	1.01kg

E NEW



+ BATTERY (2Ah)
+ BATTERY CHARGER
+ STORAGE BAG

F NEW



+ BATTERY (2Ah)
+ BATTERY (4Ah)
+ BATTERY CHARGER
+ STORAGE BAG

Model No:	Type:	Contents:
D CP20VPW	Body Only	Pressure Washer
E CP20VPWKIT1	Kit	CP20VPW - Pressure Washer CP20VBP2 - 2Ah Battery CP20VMC - Battery Charger CP1200CB - Canvas Storage Bag
F CP20VPWKIT	Kit	CP20VPW - Pressure Washer CP20VBP2 - 2Ah Battery CP20VBP4 - 4Ah Battery CP20VMC - Battery Charger CP1200CB - Canvas Storage Bag

A NEW

15L



A-C SEE RIGHT

20V 15L Cordless Handheld Ash Vacuum Cleaner

Extremely lightweight portable cordless ash vacuum. Ideal for the collection of ash or fire debris from fireplaces, stoves, wood burners, BBQs, grills and more. 150W Motor provides great suction performance. With a 15L capacity, the lightweight tank features quick release clips for ease of emptying. A 1m flexible metal lined suction hose allows the suction of ash up to a temperature of 40°C(100°F). Easily switch to blow function by using the outlet on the top of the vacuum. Includes round aluminium nozzle and a HEPA filter with inner metal mesh, preventing the leaking of ash and dust.

Motor Power:	150W
Maximum Vacuum Pressure:	100mbar
Drum Size:	15L
Vacuum Accessories Diameter:	Ø35mm
Filter Type:	HEPA
Replacement Filter Cartridge:	CP20VAVF
Body Only Weight:	2.40kg



B NEW

+ BATTERY (2Ah)
+ BATTERY CHARGER
+ STORAGE BAG



C NEW

+ BATTERY (2Ah)
+ BATTERY (4Ah)
+ BATTERY CHARGER
+ STORAGE BAG



Model No:	Type:	Contents:
A CP20VAV	Body Only	Vacuum Cleaner
B CP20VAVKIT1	Kit	CP20VAV- Vacuum Cleaner CP20VBP2 - 2Ah Battery CP20VMC - Battery Charger CP1200CB - Canvas Storage Bag
C CP20VAVKIT	Kit	CP20VAV - Vacuum Cleaner CP20VBP2 - 2Ah Battery CP20VBP4 - 4Ah Battery CP20VMC - Battery Charger CP1200CB - Canvas Storage Bag

D 20L



Accessory Pack.



D-E SEE RIGHT

20V 20L Cordless Rechargeable Wet & Dry Vacuum Cleaner

Extremely lightweight portable cordless wet and dry vacuum cleaner. Convenient for use in the home, workshop or car, especially where mains power is not easily accessible. Features a 20L stainless steel drum mounted on four swivel castors for easy manoeuvrability. Unit also has built-in blower function which can be used for many applications in the home, workshop or garden. Supplied with a comprehensive accessory pack.

Drum Size:	20L
Airflow:	65m ³ /hr
Filter Type:	Foam
Maximum Vacuum Pressure:	80mbar
Motor Power:	140W
Vacuum Accessories Diameter:	Ø32mm
Replacement Bag Filters (Pack of 5):	PC20SD20VCF
Replacement Foam Filters (Pack of 10):	PC20SD20VFF10
Body Only Weight:	3.7kg

E

+ BATTERY (4Ah)
+ BATTERY CHARGER



Accessory Pack.



Model No:	Type:	Contents:
D PC20SD20V	Body Only	Vacuum Cleaner
E PC20VCOMBO4	Kit	PC20SD20V - Vacuum Cleaner CP20VBP4 - 4Ah Battery CP20VMC - Battery Charger



A NEW

650ml



SV20
SERIES

A-C SEE RIGHT

20V 650ml Cordless Handheld Vacuum Cleaner

Lightweight cordless handheld vacuum cleaner with soft comfortable grip convenient for use in the home, workshop or car. Removable collection chamber with easy release button to dispose of waste efficiently. Supplied with 4pc Accessory Pack.

Replacement Cloth Filter:	CP20VCVCF
Body Only Weight:	1.14kg

B NEW



+ BATTERY (2Ah)
+ BATTERY CHARGER
+ STORAGE BAG

C NEW



+ BATTERY (2Ah)
+ BATTERY (4Ah)
+ BATTERY CHARGER
+ STORAGE BAG

Model No:	Type:	Contents:
A CP20VCV	Body Only	Vacuum Cleaner
B CP20VCVKIT1	Kit	CP20VCV - Vacuum Cleaner CP20VBP2 - 2Ah Battery CP20VMC - Battery Charger CP1200CB - Canvas Storage Bag
C CP20VCVKIT	Kit	CP20VCV - Vacuum Cleaner CP20VBP2 - 2Ah Battery CP20VBP4 - 4Ah Battery CP20VMC - Battery Charger CP1200CB - Canvas Storage Bag

D NEW

10L



SV20
SERIES

D-F SEE RIGHT

20V 10L Wet & Dry Vacuum Cleaner

10L Handheld Vacuum capable of picking up fine dust, plasterboard dust, sawdust, debris, liquids and more. Lightweight, portable and cordless making it very convenient for use in the home, workshop or car especially where mains power is not accessible. Lightweight tank features quick release clips for ease of emptying. Other features include on board accessory storage; separate battery housing and built-in blow function which can be used for many applications. Supplied with brush head attachments (x2), 2m extendable hose, hose storage clips (x4), HEPA filter, dust and foam filters.

Motor Power:	150W
Drum Size:	10L
Filter Type:	HEPA
Body Only Weight:	3.46kg

E NEW



+ BATTERY (2Ah)
+ BATTERY CHARGER
+ STORAGE BAG

F NEW



+ BATTERY (2Ah)
+ BATTERY (4Ah)
+ BATTERY CHARGER
+ STORAGE BAG

Model No:	Type:	Contents:
D CP20VWDV	Body Only	Vacuum Cleaner
E CP20VWDVKIT1	Kit	CP20VWDV - Vacuum Cleaner CP20VBP2 - 2Ah Battery CP20VMC - Battery Charger CP1200CB - Canvas Storage Bag
F CP20VWDVKIT	Kit	CP20VWDV - Vacuum Cleaner CP20VBP2 - 2Ah Battery CP20VBP4 - 4Ah Battery CP20VMC - Battery Charger CP1200CB - Canvas Storage Bag

A NEW



**SV20
SERIES**

B NEW



+ BATTERY (2Ah)
+ BATTERY CHARGER
+ STORAGE BAG

C NEW



+ BATTERY (2Ah)
+ BATTERY (4Ah)
+ BATTERY CHARGER
+ STORAGE BAG

A-C SEE RIGHT

20V SV20 Series Cordless Grease Gun

High power, professional, cordless grease gun, developing 8000psi. Ideal for in-field lubrication where power and speed are required. Suitable for screw-type and standard 400g cartridges, manual or bulk filling. Features LCD battery condition indicator, air bleed and heavy-duty aluminium pressure head.

Flow Rate:	100g/min
Pressure:	8000psi
Hose Length:	700mm
Body Only Weight:	2.4kg

Model No:	Type:	Contents:
A CP20VGRG	Body Only	Grease Gun
B CP20VGRGKIT1	Kit	CP20VGRG - Grease Gun CP20VBP2 - 2Ah Battery CP20VMC - Battery Charger CP1200CB - Canvas Storage Bag
C CP20VGRGKIT	Kit	CP20VGRG - Grease Gun CP20VBP2 - 2Ah Battery CP20VBP4 - 4Ah Battery CP20VMC - Battery Charger CP1200CB - Canvas Storage Bag



**LITHIUM
RECHARGEABLE**

**SV20
SERIES**

D-F SEE RIGHT

20V Power Tool Batteries for SV20 Series

Available in 3 different sizes, rubber coated and featuring battery level indicators. The SV20 series offers a solution for the professional user. Choose between 2Ah-6Ah depending on what is more important, the charge time or the working time.

Model No:	Charging Time:	Battery:
D CP20VBP2	45mins	20V 2Ah Lithium-ion
E CP20VBP4	90mins	20V 4Ah Lithium-ion
F CP20VBP6	130mins	20V 6Ah Lithium-ion



**FAST
CHARGE**
**SV20
SERIES**



G-H SEE BELOW

20V Lithium-ion Fast Charge Battery Chargers for the SV20V Series

Mains chargers for Model No's CP20VBP2, CP20VBP4 and CP20VBP6 power tool batteries. LED indicates status of battery from charging to full. Suitable for use with the SV20 Series.

I CP20VCP

LED Light/USB Charge Port for SV20 Series

**SV20
SERIES**

Slides onto Sealey 20V batteries to provide a 5V USB charging output for mobile devices. Built-in 30 Lumen LED light controlled by on/off switch. Fitted with belt hook for charging on the go.

Model No:	Charger Type:	Supply/Output:	Applications:
G CP20VMC	Single	230V~50Hz/3A	CP20VBP2, CP20VBP4, CP20VBP6
H CP20VMC2	Twin	230V~50Hz/3A(x2)	CP20VBP2, CP20VBP4, CP20VBP6

Applications:	CP20VBP2, CP20VBP4, CP20VBP6
LED Light:	30lm
Output:	5V 1.5A

A NEW



VARIABLE SPEED

SV20 SERIES



16"

B NEW

+ BATTERY (6Ah)
+ BATTERY CHARGER



A-B SEE RIGHT

20V 16" 2-in-1 Cordless/Corded High Velocity Drum Fan

High velocity variable speed drum fan. Mains or cordless power giving increased versatility in positioning cooling where it is most required. Lightweight, portable and robust unit fitted with rubber feet for stability. Features a handle plus 360° tilting stand allowing control of airflow to exactly where it is needed. Carefully balanced and fully guarded aluminium blades provide quiet and safe operation and is suitable for use in industrial, commercial, agricultural, automotive workshop, showroom and home applications.

Fan Diameter:	Ø400mm(16")
Speeds:	Continuous Variable Speed
Speed Range:	580-1470rpm
Maximum Airflow:	1650cfm
Power:	24W
Current:	1.2A
Body Only Weight:	5.6kg



Model No:	Type:	Contents:
A HVD16C	Body Only	Fan
B HVD16CCOMBO	Kit	HVD16C - Fan CP20VBP6 - 6Ah Battery CP20VMC - Battery Charger

C NEW

PROPANE



SV20 SERIES



D NEW

+ BATTERY (4Ah)
+ BATTERY CHARGER



C-D SEE RIGHT

30,000-68,000Btu/hr (9-20kW) 2-in-1 Cordless/Corded Space Warmer® Propane Heater

Many users have found the advantages of propane heaters far outweigh the small additional running costs, as the fuel is completely burned and does not leave an oily residue as experienced with paraffin, kerosene or diesel heaters. The unit runs quietly since it does not need a compressor to drive the fuel to the burner. Durable paint finish. Fan assisted, fitted with a piezoelectric ignition system for trouble-free starting and features a direct gas head assembly. Features safety solenoid preventing the unit from leaking gas without first being electrically started. Supplied with an approved propane gas regulator and hose.

Output:	30,000-68,000Btu/hr
Airflow:	294cfm
Fuel Consumption:	0.65-1.45kg/hr
Fuel:	Propane
Heated Area:	350m ³
Body Only Weight:	6.18kg



Model No:	Type:	Contents:
C LP69C	Body Only	Propane Heater
D LP69CCOMBO	Kit	LP69C - Propane Heater CP20VBP4 - 4Ah Battery CP20VMC - Battery Charger

A NEW



1800 LUMENS

SMD LED

SV20 SERIES

B NEW



+ BATTERY (4Ah)
+ BATTERY CHARGER
+ STORAGE BAG



A-B SEE RIGHT

20V Cordless SMD LED 1800lm Worklight

Cordless clip worklight useful in any workspace. Robust design with integrated carry handle and 360° movement. SMD LED Technology for ultra-bright illumination with 70 SMD LED lights producing 1800 lumens. Simple on/off switch with four levels of brightness. IP20 Rated.

LED Quantity:	70
LED Type:	SMD LED 6500K
Lumen Output: (25%, 50%, 75% and 100%)	1800lm Max. with four levels of brightness
Operating Time:	2Ah - 2hrs 30mins, 4Ah - 5hrs, 6Ah - 7hrs 30mins
Power:	15W
IP Rating:	IP20
Body Only Weight:	1.12kg

Model No:	Type:	Contents:
A CP20VCL	Body Only	Worklight
B CP20VCLKIT1	Kit	CP20VCL - Worklight CP20VBP4 - 4Ah Battery CP20VMC - Battery Charger CP1200CB - Canvas Storage Bag

C NEW

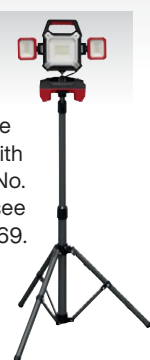


SMD LED

UP TO 4000 LUMENS

SV20 SERIES

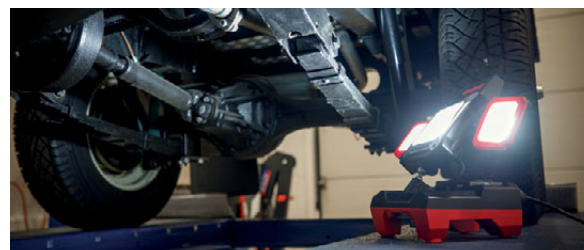
Can be used with Model No. TRI01, see page 1169.



D NEW



+ BATTERY (4Ah)
+ BATTERY CHARGER
+ STORAGE BAG



C-D SEE RIGHT

20V Cordless SMD LED 4000lm Worklight

Cordless worklight useful in any workspace. 360° Movement with SMD LED technology for ultra-bright illumination. 96 SMD LED Lights producing up to 4000 lumens. Robust design with integrated carry handle and side lights to illuminate the darkest spaces. Simple on/off switch with two levels of brightness depending on power supply. Powered by either 20V Lithium-ion battery (not included) or 230V 50Hz 1.5 mains cable with British standard plug.

LED Quantity:	96
LED Type:	SMD LED 6500K
Lumen Output:	2700lm using 20V battery pack (not supplied), 4000lm using mains cable
Power:	25W using battery pack - 45W using mains cable
IP Rating:	IP20 at lamp body
Body Only Weight:	2.12kg

Model No:	Type:	Contents:
C CP20VWL	Body Only	Worklight
D CP20VWLKIT1	Kit	CP20VWL - Worklight CP20VBP4 - 4Ah Battery CP20VMC - Battery Charger CP1200CB - Canvas Storage Bag

A NEW



WEB VIDEO



400W

Bar Length 25cm

SV20
SERIES

A-C SEE RIGHT

20V 25cm Cordless Chainsaw

Ideal addition to your garden maintenance tool kit, combining high performance and functionality, featuring quality Oregon bar and chain. Kick back protection with instant chain brake. Tool-less chain tensioning and changing. Automatic chain lubrication and oil level indication display. Composite housing and soft grip handles makes it easy and comfortable to use.

Motor Power:	400W
Noise Power/Pressure:	99/90dB(A)
No-Load Speed:	3300rpm
Saw Blade/Bar Length:	25cm
Vibration/Uncertainty:	6.414/1.5m/s ²
Body Only Weight:	3.26kg

B NEW



+ BATTERY (4Ah)
+ BATTERY CHARGER
+ STORAGE BAG

C NEW



+ BATTERY (4Ah) x2
+ BATTERY CHARGER
+ STORAGE BAG

D NEW



15L



SV20
SERIES

D-F SEE RIGHT

20V 15L Cordless Garden Backpack Sprayer

This sprayer does not require manual pressing which makes it easy and practical to use. Supplied with three different nozzles to meet different needs and an auto-cut-off function. Can be used for sterilization, disinfection, weed killing as well as watering flowers and spraying water. It has an added filter to prevent larger particles clogging the machine. Strong durable back straps to ensure comfort when worn. 15L Fluid tank with a lance holder clip.

Tank Capacity:	15L
Hose Length:	1.7m
Spraying Lance & Hose Length:	2.53m
Maximum Pressure:	1.6bar
Maximum Flow Rate:	1.3L/min
Dimensions (W x D x H):	315 x 320 x 580mm
Body Only Weight (Empty):	4.5kg

E NEW



+ BATTERY (2Ah)
+ BATTERY CHARGER
+ STORAGE BAG

F NEW



+ BATTERY (2Ah)
+ BATTERY (4Ah)
+ BATTERY CHARGER
+ STORAGE BAG

Model No:	Type:	Contents:
A CP20VCHS	Body Only	Chainsaw
B CP20VCHSKIT1	Kit	CP20VCHS - Chainsaw CP20VBP4 - 4Ah Battery CP20VMC - Battery Charger CP1200CB - Canvas Storage Bag
C CP20VCHSKIT	Kit	CP20VCHS - Chainsaw CP20VBP4 - 4Ah Battery (x2) CP20VMC - Battery Charger CP1200CB - Canvas Storage Bag

Model No:	Type:	Contents:
D CP20VGBS	Body Only	Backpack Sprayer
E CP20VGBSKIT1	Kit	CP20VGBS - Backpack Sprayer CP20VBP2 - 2Ah Battery CP20VMC - Battery Charger CP1200CB - Canvas Storage Bag
F CP20VGBSKIT	Kit	CP20VGBS - Backpack Sprayer CP20VBP2 - 2Ah Battery CP20VBP4 - 4Ah Battery CP20VMC - Battery Charger CP1200CB - Canvas Storage Bag



A CP20VPSH
20V 20cm Cordless Chainsaw Head Accessory

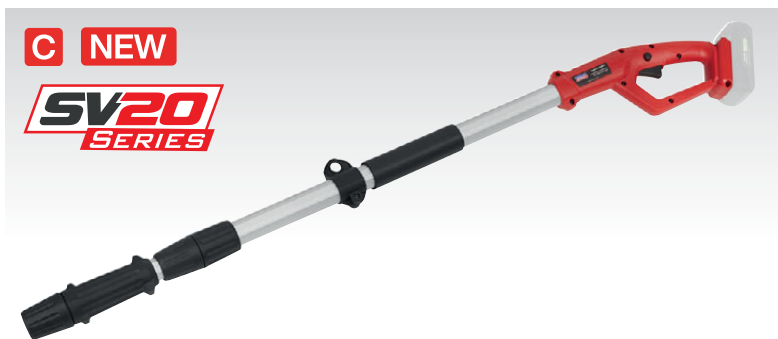
To be used in conjunction with telescopic pole Model No. CP20VTP (sold separately). Ideal for precision cutting whilst reaching hanging branches and tall hedges. High quality cutting performance with an Oregon chain and bar which require no tools to change. Continuous cutting speed of 8m/s. 90° Pivoting head is ideal for those difficult to reach areas. Automatic chain lubrication with 100ml capacity oil tank. Requires compatible 20V battery and mains charger (sold separately).

Saw Blade/Bar Length:	20cm
No-Load Speed:	Cutting speed - 8m/s
Teeth Distance:	3/8" - 9.5mm
Weight:	2.15kg

B CP20VPHT
20V 45cm Cordless Pole Hedge Trimmer Accessory

To be used in conjunction with telescopic pole Model No. CP20VTP (sold separately). Ideal for precision cutting tall hedges and shrubs. High quality cutting performing trimmer with 90° rotating head which is ideal for those difficult to reach areas. No-load speed of 1300spm and cutting depth of 15mm. Requires compatible 20V battery and mains charger (sold separately).

Blade Length:	45cm
Teeth Distance:	15mm
No-Load Speed:	1300spm
Approximate Running Time:	2Ah - 50mins; 4Ah - 100mins
Weight:	1.9kg



C-F SEE RIGHT
20V Cordless Telescopic Pole for CP20VPSH/CP20VPHT

Adjustable telescopic pole for Model No's CP20VPSH Saw Head or CP20VPHT Hedge Trimmer Head. Lightweight and adjustable for easy use with either choice of attachment. Features adjustable clip waist fastener for added security.

Pole Only Weight:	1.16kg
-------------------	--------

Model No:	Type:	Contents:
C CP20VTP	Pole Only	Telescopic Pole
D CP20VTP01	Kit	CP20VTP - Telescopic Pole CP20VPHT - Hedge Trimmer CP20VBP2 - 2Ah Battery CP20VMC - Battery Charger
E CP20VTP02	Kit	CP20VTP - Telescopic Pole CP20VPSH - Chainsaw CP20VBP4 - 4Ah Battery CP20VMC - Battery Charger
F CP20VTPCOMBO	Kit	CP20VTP - Telescopic Pole CP20VPHT - Hedge Trimmer CP20VPSH - Chainsaw CP20VBP2 - 2Ah Battery CP20VBP4 - 4Ah Battery CP20VMC - Battery Charger



A-C SEE RIGHT
20V 52cm Cordless Hedge Trimmer

Lightweight cordless hedge trimmer makes gardening easy, clean and effective. Blade tip and blade head protector fitted for added user safety. Rear handle features a soft grip and swivel feature which can be adjusted through 3-positions, making it easier to get to the desired angle.

Blade Length:	52cm
Teeth Distance:	14mm
No-Load Speed:	2200spm
Body Only Weight:	2.05kg

Model No:	Type:	Contents:
A CHT20V	Body Only	Hedge Trimmer
B CHT20VCOMBO2	Kit	CHT20V - Hedge Trimmer CP20VBP2 - 2Ah Battery CP20VMC - Battery Charger
C CHT20VCOMBO4	Kit	CHT20V - Hedge Trimmer CP20VBP4 - 4Ah Battery CP20VMC - Battery Charger



D-F SEE RIGHT
20V Cordless Strimmer

Lightweight cordless strimmer makes gardening easy, clean and effective. Fully adjustable in height and cutting angles. Head can be adjusted vertically between 0°-50° (four settings available), and also rotated between 0°-90° both ways for applications such as lawn edge cutting. Includes 10 x plastic blades.

Cutting Width:	260mm
Cutting Mechanism:	Plastic Blade
No-Load Speed:	8000rpm
Replacement Plastic Blades:	CS20VB - Pack of 10
Body Only Weight:	1.5kg

Model No:	Type:	Contents:
D CS20V	Body Only	Strimmer
E CS20VCOMBO2	Kit	CS20V - Strimmer CP20VBP2 - 2Ah Battery CP20VMC - Battery Charger
F CS20VCOMBO4	Kit	CS20V - Strimmer CP20VBP4 - 4Ah Battery CP20VMC - Battery Charger

**A-C SEE RIGHT****20V Cordless Leaf Blower**

Lightweight, cordless and extremely powerful garden leaf blower makes gardening easy, clean and effective. Ideal for removing leaves and waste from driveways, patios and small gardens.

Maximum Air Speed:	58m/s(130mph)
Maximum Air Volume:	150m ³ /hr
Body Only Weight:	1.25kg



Model No:	Type:	Contents:
A CB20V	Body Only	Leaf Blower
B CB20VCOMBO2	Kit	CB20V - Leaf Blower CP20VBP2 - 2Ah Battery CP20VMC - Battery Charger
C CB20VCOMBO4	Kit	CB20V - Leaf Blower CP20VBP4 - 4Ah Battery CP20VMC - Battery Charger

**D CP20VCOMBO6****3 x 20V Cordless Garden Power Tool Kit - 2 Batteries**

Refer to individual Model No's for full specification.

Contents:	
CHT20V - Trimmer	CP20VBP2 - 2Ah Battery
CS20V - Strimmer	CP20VBP4 - 4Ah Battery
CB20V - Leaf Blower	CP20MC - Battery Charger

**E-H SEE BELOW****20V Lithium-ion Power Tool Battery Bundles for the SV20V Series**

Refer to individual Model No's for full specification.

Model No:	Contents:	Capacity:
E BK24	1x CP20VBP2, 1x CP20VBP4	1x 2Ah, 1x 4Ah
F BK02	2 x CP20VBP2	2 x 2Ah
G BK04	2 x CP20VBP4	2 x 4Ah
H BK06	2 x CP20VBP6	2 x 6Ah

A NEW



SV20 SERIES



A-C SEE RIGHT

20V Cordless Pruning Shears

Cordless 20V power assisted pruning shears. Makes pruning stems and branches quick and easy. Cuts through branches up to Ø25mm. Low maintenance, brushless motor which gives improved performance and a more efficient, longer lasting tool. Additional safety switch for extra protection. Ergonomic and lightweight in design, this tool makes a great addition to your garden equipment.

Blade Length:	30mm
Running Time:	2Ah - 25mins, 4Ah - 45mins, 6Ah - 60mins
Body Only Weight:	0.92kg

D NEW

SV20 SERIES



D-F SEE RIGHT

20V Cordless 3-in-1 Garden Tool

Cordless 3-in-1 garden tool designed to make trimming and gardening quick and easy. The ergonomic design and lock-in function makes for comfortable and easy use. Three tool-less interchangeable attachments mean you can easily switch between grass shearing, hedge trimming and raking.

Body Only Weight:	1.10kg
-------------------	--------

B NEW



+ BATTERY (2Ah)
+ BATTERY CHARGER
+ STORAGE BAG



C NEW



+ BATTERY (2Ah) x2
+ BATTERY CHARGER
+ STORAGE BAG



Model No:	Type:	Contents:
A CP20VPS	Body Only	Pruning Shears
B CP20VPSKIT1	Kit	CP20VPS - Pruning Shears CP20VBP2 - 2Ah Battery CP20VMC - Battery Charger CP1200CB - Canvas Storage Bag
C CP20VPSKIT	Kit	CP20VPS - Pruning Shears CP20VBP2 - 2Ah Battery (x2) CP20VMC - Battery Charger CP1200CB - Canvas Storage Bag

E NEW



+ BATTERY (2Ah)
+ BATTERY CHARGER
+ STORAGE BAG



F NEW



+ BATTERY (2Ah)
+ BATTERY (4Ah)
+ BATTERY CHARGER
+ STORAGE BAG



Model No:	Type:	Contents:
D CP20VGT3	Body Only	3-in-1 Garden Tool
E CP20VGT3KIT1	Kit	CP20VGT3 - 3-in-1 Garden Tool CP20VBP2 - 2Ah Battery CP20VMC - Battery Charger CP1200CB - Canvas Storage Bag
F CP20VGT3KIT	Kit	CP20VGT3 - 3-in-1 Garden Tool CP20VBP2 - 2Ah Battery CP20VBP4 - 4Ah Battery CP20VMC - Battery Charger CP1200CB - Canvas Storage Bag



A CP20VDDCOMBO

2 x 20V Cordless Ø13mm Combi Drill/1/4"Hex Drive Impact Driver Combo Kit

Refer to individual Model No's for full specification.

Contents:	
CP20VDD - Combi Drill/Driver	CP20VBP4 - 4Ah Battery
CP20VID - Impact Driver	CP20VMC - Battery Charger
CP20VBP2 - 2Ah Battery	CP1200CB - Canvas Storage Bag

B CP20VCOMBO1

3 x 20V Cordless Tool Combo - 2 Batteries

Refer to individual Model No's for full specification.

Contents:	
CP20VDD - Combi Drill/Driver	CP20VBP4 - 4Ah Battery
CP20VIW - Impact Wrench	CP20VMC - Battery Charger
CP20VAGB - Angle Grinder	CP1200CB - Canvas Storage Bag
CP20VBP2 - 2Ah Battery	



C CP20VCOMBOX1

4 x 20V Cordless - Brushless Tool Combo - 2 Batteries

Refer to individual Model No's for full specification.

Contents:	
CP20VDDX - Combi Drill/Driver	CP20VBP2 - 2Ah Battery
CP20VIDX - Impact Driver	CP20VBP4 - 4Ah Battery
CP20VIWX - Impact Wrench	CP20VMC - Battery Charger
CP20VAGX - Angle Grinder	Toolbox - Large



D PT SR2

Power Tool Storage Rack - 2 Bay

Wall mountable rack specifically designed for the storage of power tools. Stores up to two power tools. Shelf space for power tool battery and chargers. Open fronted bays make tools easily accessible. Supplied flat-packed.

Dimensions (W x D x H):	246 x 230 x 300mm
Power Tool Storage Bays:	2
Shelves:	1



E PT SR5

Power Tool Storage Rack - 5 Bay

Wall mounting rack specifically designed for the storage of power tools. Stores up to five power tools. Shelf space for power tool battery chargers. Open fronted bays make tools easily accessible. Supplied flat-packed.

Dimensions (W x D x H):	535 x 230 x 300mm
Power Tool Storage Bays:	5
Shelves:	2

A



A CP20VCOMBO2

5 x 20V Cordless Tool Combo - 2 Batteries

Refer to individual Model No's for full specification.

Contents:

- | | |
|-------------------------------|---------------------------|
| CP20VDD - Combi Drill/Driver | CP20VBP2 - 2Ah Battery |
| CP20VIW - Impact Wrench | CP20VBP4 - 4Ah Battery |
| CP20VAGB - Angle Grinder | CP20VMC - Battery Charger |
| CP20VRS - Reciprocating Saw | Toolbox - Large |
| CP20VOS - Orbital Palm Sander | |



B



B CP20VCOMBO4

8 x 20V Cordless Tool Combo - 4 Batteries

Refer to individual Model No's for full specification.

Contents:

- | | |
|----------------------------------|---------------------------------|
| CP20VDD - Combi Drill/Driver | PC20SD20V - Vacuum Cleaner |
| CP20VID - Impact Driver | CP20VBP2 - 2Ah Battery (x2) |
| CP20VIW - Impact Wrench | CP20VBP4 - 4Ah Battery (x2) |
| CP20VAGB - Angle Grinder | CP20VMC2 - Dual Battery Charger |
| CP20VMT - Oscillating Multi-Tool | AP8130 - Toolbox - Small |
| CP20VRS - Reciprocating Saw | Toolbox - Large |
| CP20VOS - Orbital Palm Sander | |





A CP20VCOMB03
4 x 20V Cordless Garden Power Tool Kit - 2 Batteries

Refer to individual Model No's for full specification.

Contents:	
CHT20V - Trimmer	CP20VBP2 - 2Ah Battery
CS20V - Strimmer	CP20VBP4 - 4Ah Battery
CB20V - Leaf Blower	CP20VMC - Battery Charger
PC20SD20V - Vacuum Cleaner	



C CP20VCOMB014
2 x 20V Cordless Gardening/Pruning Combo Kit - 2 Batteries

Refer to individual Model No's for full specification.

Contents:	
CP20VPS - Pruning Shears	CP20VBP2 - 2Ah Battery
CP20VGT3 - 3-in-1 Garden Tool	CP20VBP4 - 4Ah Battery
	CP20VMC - Battery Charger



GARDEN EQUIPMENT

For our full range of garden storage bins, wheelbarrows and flexi tubs, see pages 1330 to 1339.



B CP20VCOMB05
3 x 20V Cordless Tool Vac Combo - 2 Batteries

Refer to individual Model No's for full specification.

Contents:	
CP20VDD - Combi Drill/Driver	CP20VBP2 - 2Ah Battery (x2)
CP20VMT - Multi-Tool	CP20VMC - Battery Charger
PC20SD20V - Vacuum Cleaner	CP1200CB - Canvas Storage Bag



D CP20VCOMB015
6 x 20V Cordless Garden Maintenance Combo Kit - 2 Batteries

Refer to individual Model No's for full specification.

Contents:	
CP20VCHS - Chainsaw	CHT20V - Hedge Trimmer
CP20VPS - Pruning Shears	CP20VBP2 - 2Ah Battery
CP20VGT3 - 3-in-1 Garden Tool	CP20VBP4 - 4Ah Battery
CB20V - Leaf Blower	CP20VMC - Battery Charger
CS20V - Strimmer	



A CP20VCOMBO10
3 x 20V Cordless Car Valeting Combo Kit - 2 Batteries
 Refer to individual Model No's for full specification.

Contents:	
CP20VPW - Pressure Washer	CP20VBP2 - 2Ah Battery
CP20VOP - Polisher	CP20VBP4 - 4Ah Battery
PC20SD20V - Vacuum Cleaner	CP20VMC - Battery Charger



B CP20VCOMBO11
2 x 20V Cordless Car Cleaning Combo Kit - 2 Batteries
 Refer to individual Model No's for full specification.

Contents:	
CP20VPW - Pressure Washer	CP20VBP2 - 2Ah Battery
CP20VWDV - Vacuum Cleaner	CP20VBP4 - 4Ah Battery
	CP20VMC - Battery Charger



C CP20VCOMBO12
2 x 20V Cordless Router & Combi Drill Kit - 2 Batteries
 Refer to individual Model No's for full specification.

Contents:	
CP20VTR - Trimming Router	CP20VBP4 - 4Ah Battery
CP20VDD - Combi Drill/Driver	CP20VMC - Battery Charger
CP20VBP2 - 2Ah Battery	CP1200CB - Canvas Storage Bag



D CP20VCOMBO13
5 x 20V Cordless Tool Combo Kit - 2 Batteries
 Refer to individual Model No's for full specification.

Contents:	
CP20VCS - Circular Saw	CP20VBP2 - 2Ah Battery
CP20VJS - Jigsaw	CP20VBP4 - 4Ah Battery
CP20VAGB - Angle Grinder	CP20VMC - Battery Charger
CP20VDD - Combi Drill/Driver	AP512 - Storage Bag on wheels
CP20VID - Impact Driver	

A 2Ah



B 4Ah



C 6Ah



A-C SEE RIGHT

20V Power Tool Batteries for SV20 Series

Available in 3 different sizes, rubber coated and featuring battery level indicators. The SV20 series offers a solution for the professional user. Choose between 2Ah-6Ah depending on what is more important, the charge time or the working time.

Model No:	Charging Time:	Battery:
A CP20VBP2	45mins	20V 2Ah Lithium-ion
B CP20VBP4	90mins	20V 4Ah Lithium-ion
C CP20VBP6	130mins	20V 6Ah Lithium-ion

D-G



2Ah



4Ah



6Ah

H



30 LUMENS



D-G SEE BELOW

20V Lithium-ion Power Tool Battery Packs for the SV20V Series

Refer to **A-C** for full specification.

Model No:	Contents:	Capacity:
D BK24	1x CP20VBP2, 1x CP20VBP4	1x 2Ah, 1x 4Ah
E BK02	2x CP20VBP2	2x 2Ah
F BK04	2x CP20VBP4	2x 4Ah
G BK06	2x CP20VBP6	2x 6Ah



I-J SEE BELOW

20V Lithium-ion Fast Charge Battery Chargers for the SV20V Series

Mains chargers for Model No's CP20VBP2, CP20VBP4, CP20VBP6 power tool batteries. LED indicates status of battery from charging to full. Suitable for use with the SV20 Series.

Model No:	Charger Type:	Supply/Output:	Applications:
I CP20VMC	Single	230V~50Hz/3A	CP20VBP2, CP20VBP4, CP20VBP6
J CP20VMC2	Twin	230V~50Hz/3A (x2)	CP20VBP2, CP20VBP4, CP20VBP6



H CP20VCP

LED Light/USB Charge Port for SV20 Series

Slides onto Sealey 20V batteries to provide a 5V USB charging output for mobile devices. Built-in 30 Lumen LED light controlled by on/off switch. Fitted with belt hook for charging on the go.

Applications:	CP20VBP2, CP20VBP4, CP20VBP6
LED Light	30lm
Output:	5V 1.5A



A CP36B
26pc 3.6V Cordless Screwdriver Set

Compact, lightweight and comfortable to use. Features locking swivel adjustment from pistol to straight type. Forward, reverse and trigger-lock with soft grip handle. Features LED worklight and battery level indicator. Eight adjustable torque settings coupled with a quick release bit holder. Supplied with 24 assorted bits and mains charging cable.

Battery:	3.6V 1.3Ah Lithium-ion
No-Load Speed:	0-210rpm
Maximum Torque:	3.5Nm
Charging Time:	3-5hr
Contents:	Screwdriver Bits; Slotted - 3(x2), 4, 4.5mm, Phillips - #0, #1, #2(x2), #3, Pozi - #0, #2, #3, TRX-Star* - T8, T10, T15, T20, Hex - 1.5, 4mm, 50mm Screwdriver Bits; Slotted - 4mm, Phillips - #2, Magnetic Bit Holder, Drill Bits - 2, 2.5, 3mm



B CP36S
53pc 3.6V Cordless Screwdriver Set

Forward, reverse and trigger-lock with soft grip handle for comfort and control. Features locking swivel adjustment from pistol to straight type and built-in LED torch in base of handle for use in low light areas. Adjustable torque with eight settings and quick release 6mm bit holder. Integral LED light to illuminate working area. Lithium-ion battery maintains a high energy density level, has no memory effect, lasting longer than traditional Ni-Cd cells, and will recover from a deep discharge state. Battery level indicator. Supplied in storage case with accessories.

Battery:	3.6V 1.3Ah Lithium-ion
No-Load Speed:	0-210rpm
Maximum Torque:	3.5Nm
Charging Time:	3-5hr
Contents:	Screwdriver Bits; Slotted - 3(x2), 4(x2), 5(x2), 6mm(x2), Phillips - #1(x5), #2(x5), #3(x4), Pozi - #1(x4), #2(x4), #3(x4), TRX-Star* - T8(x2), T10(x2), T15(x2), T20, T25, T27, T30, T40, T45, Hex - 3(x2), 4(x2), 5mm(x2), Magnetic Bit Holder



C CP36MS
14pc 3.7V Quick Select Cordless Screwdriver

Compact, lightweight and comfortable to use. Quick bit selection combined with six bit magazine storage system means choosing the right bit couldn't be easier. Forward, reverse and trigger-lock with soft grip handle. Features LED worklight and battery level indicator. Supplied with 12 bits in two magazines and USB charging cable.

Battery:	3.7V 1.3Ah Lithium-ion
No-Load Speed:	0-230rpm
Maximum Torque:	4.5Nm
Charging Time:	3-5hr
Contents:	Screwdriver Bits; Slotted - 3, 4, 5mm, Phillips - #1, #2, #3, Pozi - #1, #2, #3, TRX-Star* - T10, T15, T20



D CP18VLD
18V Ø10mm Cordless Combi Drill

Compact, lightweight design powered by lithium-ion battery technology which gives an all-round better performance than standard Ni-Cd/Ni-MH cells. Composite housing with built-in battery level indicator and LED worklight. Ø0.8-10mm Keyless chuck with added hammer function. 2-Speed settings and 21 torque settings allows control when tightening screws. Features a metal belt clip for safer storage while not in use. Supplied in storage case with battery and mains charger.

Chuck Size:	Ø10mm
Battery:	18V 1.5Ah Lithium-ion
Impact Rate:	0-5250/0-19500bpm
No-Load Speed:	0-350/0-1250rpm
Drilling Capacities:	
Wood:	Ø20mm
Metal:	Ø10mm
Concrete:	Ø10mm
Maximum Torque:	31Nm
Replacement Battery:	CP18VLDDBP
Weight:	2.30kg



18V

1/2"
Sq Drive550Nm
TorqueFAST
CHARGE

B



A

VARIABLE
SPEED **A-B SEE BELOW****18V 1/2" Sq Drive Cordless Impact Wrenches**

Variable speed trigger for greater control. Cast aluminium gearbox with rubber gearhead cover. Thermal overload protection. Double injection body with rubber grips for added comfort. Produces torque of up to 550Nm(406lb.ft). Fitted with electronic brake. All metal gear construction for ultimate durability and performance. LED worklight illuminates work area when trigger is pressed. Supplied in storage case with 3Ah Lithium-ion battery and 80 minute mains charger.

A

B

Model No:	CP400LI	CP400LIHV
Colour:	Red	Green
Battery:	18V 3Ah Lithium-ion	18V 3Ah Lithium-ion
Drive:	1/2" Sq	1/2" Sq
Impact Rate:	0-2700bpm	0-2700bpm
No-Load Speed:	0-2200rpm	0-2200rpm
Breakaway Torque:	550Nm(406lb.ft)	550Nm(406lb.ft)
Fastening Torque:	420Nm(310lb.ft)	420Nm(310lb.ft)
Noise Power/Pressure:	93/82dB(A)	93/82dB(A)
Vibration/Uncertainty:	8.93/1.5m/s ²	8.93/1.5m/s ²
Replacement Battery:	CP400BP	CP400BP

C NEW

D NEW



18V

1/2"
Sq Drive650Nm
TorqueVARIABLE
SPEED
FAST
CHARGE 

C

D

C-D SEE BELOW**18V 1/2" Sq Drive Cordless Impact Wrenches**

Variable speed trigger for greater control. Cast aluminium gearbox. Rubber gearhead cover. Thermal overload protection. Double injection body with rubber grips for added comfort. Brushless motor, which gives an improved performance and requires less maintenance than the brushed equivalent, giving you a more efficient, longer lasting tool. Produces torque of up to 650Nm(479lb.ft). Fitted with electronic brake. LED worklight illuminates work area when trigger is pressed. Supplied in storage case with 4Ah Lithium-ion battery and fast charger.

Model No:	CP650LI	CP650LIHV
Colour:	Red	Green
Battery:	18V 4Ah Lithium-ion	18V 4Ah Lithium-ion
Drive:	1/2" Sq	1/2" Sq
Impact Rate:	0-2300/0-2700bpm	0-2300/0-2700bpm
No-Load Speed:	0-2200/0-2600rpm	0-2200/0-2600rpm
Breakaway Torque:	650Nm(479lb.ft)	650Nm(479lb.ft)
Fastening Torque:	430Nm(317lb.ft)	430Nm(317lb.ft)
Noise Power/Pressure:	95/87dB(A)	95/87dB(A)
Vibration/Uncertainty:	9.3/1.5m/s ²	9.3/1.5m/s ²
Replacement Battery:	CP650BP	CP650BP



A CP1812
18V 1/2" Sq Drive Cordless Impact Wrench

Brushless motor produces maximum torque of up to 1000Nm(738lb.ft). Variable speed trigger for greater control. Three selectable speed settings. All metal gear construction for ultimate durability and performance. Double injection body with rubber grips for added comfort. Fitted with electronic brake. LED worklight illuminates work area when trigger is pressed. Supplied in storage case with 4Ah Lithium-ion battery and 2 hour mains charger.

Battery:	18V 4Ah Lithium-ion
Drive:	1/2" Sq
Impact Rate:	0-1050/0-1650/0-2050brm
No-Load Speed:	0-900/0-1400/0-1750rpm
Breakaway Torque:	1000Nm(738lb.ft)
Fastening Torque:	750Nm(553lb.ft)
Noise Power/Pressure:	110/99dB(A)
Replacement Battery:	CP1812BP
Vibration/Uncertainty:	22.351/1.5m/s ²



B IW230V
1/2" Sq Drive Impact Wrench 230V

Powerful, ergonomic and capable of removing the most stubborn of wheel nuts. Mains powered, and capable of producing up to 600Nm of breakaway torque. Fitted with 2m heavy-duty rubberised cable. Supplied in a storage case with four impact sockets (17, 19, 21, 22mm).

Drive:	1/2" Sq
Impact Rate:	5000bpm
No-Load Speed:	0-2600rpm
Breakaway Torque:	600Nm(443lb.ft)
Fastening Torque:	480Nm(354lb.ft)
Supply/Plug Type:	230V/3-Pin
Power Supply Cable Length:	2m
Weight:	3.78kg



C CP314
20V 2Ah Lithium-ion Cordless Riveter

Suitable for aluminium, steel and stainless steel rivets from 2.4 to 4.8mm. Powered by a 20V 2Ah Lithium-ion battery with a pulling force of up to 9000N. Four selectable power settings help preserve battery by only supplying the force required. LED battery level indicator. Four riveting nozzles, 2.4mm, 3.2mm, 4mm and 4.8mm. Supplied in durable plastic storage case with mains charger and 2Ah battery.

Nozzle Sizes:	2.4, 3.2, 4, 4.8mm
Maximum Pulling Force:	9000N
Battery:	20V 2Ah Lithium-ion
Weight:	1.40kg
Blind Rivet Types:	
Aluminium:	✓
Steel:	✓
Stainless Steel:	✓



D CP316
20V 2Ah Lithium-ion Cordless - Brushless Nut Riveter

Suitable for aluminium rivet nuts. Powered by a 20V 2Ah lithium-ion battery and brushless motor with a pulling force of up to 4000N, capable of pulling up to 80 rivets on one full charge. Three selectable power settings to help preserve the battery by only supplying the force required. Quick release mechanism which allows for speedy mandrel changes. LED battery level indicator. Supplied with seven sets of threaded mandrels from M3 to M12 and fast charge mains charger. Supplied in storage case.

Nozzle Sizes:	M3, M4, M5, M6, M8, M10, M12
Maximum Pulling Force:	4000N
Battery:	20V 2Ah Lithium-ion
Replacement Battery:	CP3BP
Weight:	1.80kg
Blind Rivet Type:	
Aluminium:	✓
Steel:	✗
Stainless Steel:	✗

A



VARIABLE
SPEED
SV20
SERIES

A-C SEE RIGHT

20V SDS Plus Cordless Rotary Hammer Drill

Powerful, lightweight cordless rotary hammer drill. Durable composite housing with soft grip for added comfort. SDS Plus chuck. Two drilling functions, rotary and rotary with hammer. Built-in LED worklight. Forward, reverse and trigger lock. Variable speed trigger for greater control.

Impact Rate:	0-5000bpm
No-Load Speed:	0-900rpm
Drilling Capacities:	
Wood:	Ø16mm
Metal:	Ø8mm
Concrete:	Ø10mm
Chuck Size:	SDS Plus
Noise Power/Pressure:	96/85dB(A)
Vibration/Uncertainty:	8.64/1.5m/s ²
Body Only Weight:	1.245kg

B



+ BATTERY (2Ah)
+ BATTERY CHARGER
+ STORAGE BAG

C



+ BATTERY (2Ah)
+ BATTERY (4Ah)
+ BATTERY CHARGER
+ STORAGE BAG

Model No:	Type:	Contents:
A CP20VSDS	Body Only	Rotary Hammer Drill
B CP20VSDSKIT1	Kit	CP20VSDS - Rotary Hammer Drill CP20VBP2 - 2Ah Battery CP20VMC - Battery Charger CP1200CB - Canvas Storage Bag
C CP20VSDSKIT	Kit	CP20VSDS - Rotary Hammer Drill CP20VBP2 - 2Ah Battery CP20VBP4 - 4Ah Battery CP20VMC - Battery Charger CP1200CB - Canvas Storage Bag

D



Ø13mm

750W

VARIABLE
SPEED

D SD750

Ø13mm Variable Speed Hammer Drill 750W

750W Hammer drill with variable speed and reverse controls. Suitable for driving and removing screws. Hammer action allows up to Ø13mm capacity in masonry. Features high quality Ø13mm chuck, textured grip handle and is supplied with adjustable side handle.

Chuck Size:	Ø13mm
Motor Power:	750W
Supply:	230V
No-Load Speed:	0-3100rpm
Hammer Action:	0-48000bpm
Drilling Capacities:	
Wood:	Ø25mm
Steel:	Ø8mm
Masonry:	Ø13mm
Plug Type:	3-Pin
Power Supply Cable Length:	2m
Weight:	1.75kg

E



Ø13mm

850W

VARIABLE
SPEED

E SD800

Ø13mm Variable Speed Hammer Drill with Reverse 850W

Professional 850W hammer drill with variable speed and reverse controls. Suitable for driving and removing screws. Hammer action allows up to Ø13mm capacity in masonry. Features high quality Ø13mm chuck with soft grip handle and body for added comfort. Supplied with adjustable side handle and depth stop.

Chuck Size:	Ø13mm
Motor Power:	850W
Supply:	230V
No-Load Speed:	0-3000rpm
Hammer Action:	0-48000bpm
Drilling Diameters:	
Wood:	Ø25mm
Steel:	Ø13mm
Masonry:	Ø13mm
Plug Type:	3-Pin
Power Supply Cable Length:	2m
Weight:	2.8kg

F



Ø13mm

1050W

VARIABLE
SPEED

F SD1000

Ø13mm 2 Mechanical/Variable Speed Hammer Drill 1050W

Professional heavy-duty 1050W hammer drill with variable speed and reverse controls. Suitable for driving and removing screws. 2-Speed mechanical gearbox gives added versatility and hammer action allows up to Ø16mm capacity in masonry. Features high quality Ø13mm chuck with soft grip handle and body. Supplied in storage case with adjustable side handle and depth stop.

Chuck Size:	Ø13mm
Motor Power:	1050W
Supply:	230V
No-Load Speed:	0-1100/0-3000rpm
Hammer Action:	0-17600/0-48000bpm
Drilling Capacities:	
Wood:	Ø25mm
Steel:	Ø13mm
Masonry:	Ø16mm
Plug Type:	3-Pin
Power Supply Cable Length:	2m
Weight:	4.5kg



A SDSPLUS18
Ø18mm SDS Plus
Rotary Hammer Drill 750W/230V

Powerful rotary hammer drill with patented double chuck. Chuck can be used with SDS, SDS Plus and HSS drill bits. Three drilling functions. Variable speed control trigger. LED Mains power indicator. Supplied in storage case with 8mm, 10mm and 12mm masonry drill bits and depth gauge. Fitted with 360° auxiliary handle.

Concrete Drilling Diameter:	Ø18mm
Chuck Type:	Double Chuck System
Impact Rate:	0-5500bpm
Impact Energy:	2J
No-Load Speed:	0-1700/0-3000rpm
Supply/Plug Type:	230V/3-Pin
Power Supply Cable Length:	2m
Weight:	2.4kg



B SDSPLUS26
Ø26mm SDS Plus
Rotary Hammer Drill 900W/230V

Powerful rotary hammer drill with SDS Plus chuck. Three drilling functions. Safety clutch system. Supplied in storage case with 8mm, 10mm and 12mm masonry drill bits, pin and cold chisels and PVC dust cap. Fitted with 360° auxiliary handle.

Concrete Drilling Diameter:	Ø26mm
Chuck Type:	SDS Plus
Impact Rate:	0-4300bpm
Impact Energy:	4.2J
No-Load Speed:	880rpm
Supply/Plug Type:	230V/3-Pin
Power Supply Cable Length:	2m
Weight:	3.2kg



C SDSPLUS32
Ø32mm SDS Plus
Rotary Hammer Drill 1500W/230V

Powerful rotary hammer drill with SDS Plus chuck. Four drilling functions. Anti-vibration shock absorbers built into body. Stepless variable speed control trigger. Safety clutch system. LED Mains power indicator. Easy-access grease plug for gear maintenance. Supplied in storage case with 8mm, 10mm and 12mm masonry drill bits, pin and cold chisels, PVC dust cap and depth gauge. Fitted with 360° auxiliary handle.

Concrete Drilling Diameter:	Ø32mm
Chuck Type:	SDS Plus
Impact Rate:	0-4500bpm
Impact Energy:	6J
No-Load Speed:	0-850rpm
Supply/Plug Type:	230V/3-Pin
Power Supply Cable Length:	2m
Weight:	5.02kg



D SDSMAX40
Ø40mm SDS MAX
Rotary Hammer Drill 1500W/230V

Powerful rotary hammer drill with SDS MAX chuck. Two functions, hammer and rotary hammer. Anti-vibration shock absorbers built into body. Stepless variable speed control trigger. Safety clutch system. LED Mains power indicator. Easy-access grease plug for gear maintenance. Supplied in storage case with 18mm masonry drill bit, pin chisel, PVC dust cap and depth gauge. Fitted with 360° auxiliary handle.

Concrete Drilling Diameter:	Ø40mm
Chuck Type:	SDS Max
Impact Rate:	3780bpm
Impact Energy:	12J
No-Load Speed:	0-480rpm
Supply/Plug Type:	230V/3-Pin
Power Supply Cable Length:	2m
Weight:	6.8kg



E DHB1300
SDS MAX
Demolition Breaker Hammer 1300W/230V

Powerful demolition breaker hammer with SDS MAX chuck. Vibration reducing shock absorbers built into body. Variable speed trigger. 360° Auxiliary handle. Supplied in a case with pin and cold chisels.

Chuck Type:	SDS MAX
Impact Rate:	4600bpm
Impact Energy:	20J
Supply/Plug Type:	230V/3-Pin
Power Supply Cable Length:	2m
Weight:	6kg



F DHB1600
Demolition Breaker Hammer 1600W/230V

Powerful demolition breaker hammer with 1" SDS-Hex chuck. Vibration reducing rubber grips. Heavy-duty metal body construction. Anti-fatigue trigger-lock. 360° Auxiliary handle. Supplied in metal storage case with a point chisel and a 30mm flat chisel.

Chuck Type:	1" SDS-Hex
Impact Rate:	2000bpm
Impact Energy:	45J
Supply/Plug Type:	230V/3-Pin
Power Supply Cable Length:	2m
Weight:	14kg

SDS ROTARY HAMMER DRILLS
 View our video, for more information on SDS Rotary Hammer Drills.



A-C

Ø115mm

SV20
SERIES



D-F

Ø115mm

SV20
SERIES



Premier



A-C SEE BELOW

20V Ø115mm Cordless Angle Grinder

Refer to individual Model No's for full specification.

Model No:	Type:	Contents:
A CP20VAGB	Body Only	Angle Grinder
B CP20VAGBKIT1	Kit	CP20VAGB - Angle Grinder CP20VBP4 - 4Ah Battery CP20VMC - Battery Charger CP1200CB - Canvas Storage Bag
C CP20VAGBKIT	Kit	CP20VAGB - Angle Grinder CP20VBP4 - 4Ah Battery (x2) CP20VMC - Battery Charger CP1200CB - Canvas Storage Bag

D-F SEE BELOW

20V Ø115mm Cordless Angle Grinder

Refer to individual Model No's for full specification.

Model No:	Type:	Contents:
D CP20VAGX	Body Only	Angle Grinder
E CP20VAGXKIT1	Kit	CP20VAGX - Angle Grinder CP20VBP4 - 4Ah Battery CP20VMC - Battery Charger CP1200CB - Canvas Storage Bag
F CP20VAGXKIT	Kit	CP20VAGX - Angle Grinder CP20VBP4 - 4Ah Battery (x2) CP20VMC - Battery Charger CP1200CB - Canvas Storage Bag

G



750W
Ø100mm

G SAG101

Ø100mm Angle Grinder 750W

Suitable for a variety of trade applications. Features heavy-duty alloy bevel gear head with spindle lock for fast loading/unloading of discs. Vibration reducing double injection composite body with rubber coating for added comfort. Powerful 750W heavy-duty motor produces 12000rpm (no-load speed). Tool-less wheel guard adjustment. Built-in LED power indicator. Supplied with side handle and spanner. Grinding disc not included, order Model No. PTC/100G.

Disc Size:	Ø100mm
Spindle Size:	M10 x 1.5mm
Motor Power:	750W
No-Load Speed:	12000rpm
Noise Power/Pressure:	99/88dB(A)
Vibration/Uncertainty:	6.92/1.5m/s ²
Supply:	230V
Plug Type:	3-Pin
Power Supply Cable Length:	2m
Weight:	1.8kg

H



900W
Ø115mm

H SAG115

Ø115mm Angle Grinder 900W

Suitable for a variety of trade applications. Features heavy-duty alloy bevel gear head with spindle lock for fast loading/unloading of discs. Vibration reducing double injection composite body with rubber coating for added comfort. Powerful 900W heavy-duty motor produces 12000rpm (no-load speed). Tool-less wheel guard adjustment. Built-in LED power indicator. Supplied with side handle and spanner. Grinding disc not included, order Model No. PTC/115G.

Disc Size:	Ø115mm
Spindle Size:	M14
Motor Power:	900W
No-Load Speed:	12000rpm
Noise Power/Pressure:	98/87dB(A)
Vibration/Uncertainty:	6.18/1.5m/s ²
Supply:	230V
Plug Type:	3-Pin
Power Supply Cable Length:	2m
Weight:	1.8kg

I



750W
Ø115mm

I SGS115

Ø115mm Angle Grinder 750W - Slim Body

Slim ergonomic body ensures a firm grip while performing various tasks. Features heavy-duty alloy bevel gear head with composite body casing and spindle lock for fast loading/unloading of discs. Powerful 750W motor produces 12000rpm (no-load speed). Supplied with side handle, guard and spanner. Disc not included - Grinding Disc, order Model No. PTC/115G, Cutting Disc, order Model No. PTC/115C.

Disc Size:	Ø115mm
Spindle Size:	M14 x 2mm
Motor Power:	750W
No-Load Speed:	12000rpm
Noise Power/Pressure:	96/85dB(A)
Vibration/Uncertainty:	5.3/1.5m/s ²
Supply:	230V
Plug Type:	3-Pin
Power Supply Cable Length:	2m
Weight:	1.8kg





1100W
Ø125mm

A SAG125
Ø125mm Angle Grinder 1100W

Suitable for a variety of trade applications. Features heavy-duty alloy bevel gear head with spindle lock for fast loading/unloading of discs. Vibration reducing double injection composite body with rubber coating for added comfort. Powerful 1100W heavy-duty motor produces 12000rpm (no-load speed). Tool-less wheel guard adjustment. Built-in LED power indicator. Supplied with side handle and spanner.

Disc Size:	Ø125mm
Spindle Size:	M14 x 2mm
Motor Power:	1100W
No-Load Speed:	12000rpm
Noise Power/Pressure:	98/87dB(A)
Vibration/Uncertainty:	6.18/1.5m/s ²
Supply:	230V
Plug Type:	3-Pin
Power Supply Cable Length:	2m
Weight:	1.8kg



1000W
Ø125mm

B SG125EU
Ø125mm Angle Grinder 1000W with Schuko Plug

Suitable for a variety of trade applications. Features heavy-duty alloy bevel gear head with composite body casing and spindle lock for fast loading/unloading of discs. 1000W Heavy-duty motor develops powerful 11000rpm (no-load speed). Supplied with side handle, guard and spanner. Grinding disc not included, order Model No. PTC/125G.

Disc Size:	Ø125mm
Spindle Size:	M14 x 2mm
Motor Power:	1000W
No-Load Speed:	11000rpm
Noise Power/Pressure:	101/90dB(A)
Vibration/Uncertainty:	2.989/1.5m/s ²
Supply:	220~240V
Plug Type:	Schuko
Power Supply Cable Length:	3m
Weight:	2.4kg



2000W
Ø230mm

C SAG230
Ø230mm Angle Grinder 2000W

Suitable for a variety of trade applications. Features heavy-duty alloy bevel gear head with spindle lock for fast loading/unloading of discs. Vibration reducing double injection composite body with rubber coating for added comfort. Powerful 2000W heavy-duty motor produces 6500rpm (no-load speed). Tool-less wheel guard for quick and easy adjustment. Built-in LED power indicator. 2-Stage trigger for added safety. Fitted with soft start to reduce mains draw when switched on. Supplied with side handle, guard and spanner.

Disc Size:	Ø230mm
Spindle Size:	M14 x 2mm
Motor Power:	2000W
No-Load Speed:	6500rpm
Noise Power/Pressure:	103/92dB(A)
Vibration/Uncertainty:	5.175/1.5m/s ²
Supply:	230V
Plug Type:	3-Pin
Power Supply Cable Length:	2m
Weight:	5.5kg



D SMS02
Angle Grinder Stand

Cut-off stand with solid cast iron base for precise vertical cutting using an angle grinder. Supplied with a vice which mounts onto the base to secure the workpiece. Suitable for cuts of up to 18mm. Suitable for use with all Sealey Ø100mm, Ø115mm and Ø125mm angle grinders, plus most other grinders of the same size.

Base Size:	190 x 240mm
Maximum Cutting Depth:	18mm



Ø4" **Ø4½"**

E SEE BELOW
Metal Cutting Discs

Flat metal cutting discs. Model No's ending CT and CET are also suitable for cutting stainless steel.

Model No:	Disc Size Metric:	Disc Size Imperial:	Material:	Bore:
PTC/100C	Ø100 x 3mm	Ø4"	Steel	Ø16mm
PTC/100C50 (Pack of 50) NEW	Ø100 x 3mm	Ø4"	Steel	Ø16mm
PTC/115C50 (Pack of 50) NEW	Ø115 x 3mm	Ø4.5"	Steel	Ø22mm
PTC/100CT	Ø100 x 1.6mm	Ø4"	Stainless Steel	Ø16mm
PTC/100CT50 (Pack of 50)	Ø100 x 1.6mm	Ø4"	Stainless Steel	Ø16mm
PTC/115CET5 (Pack of 5)	Ø115 x 1.2mm	Ø4.5"	Stainless Steel	Ø22mm
PTC115CET50 (Pack of 50)	Ø115 x 1.2mm	Ø4.5"	Stainless Steel	Ø22mm
PTC/115CET100 (Pack of 100)	Ø115 x 1.2mm	Ø4.5"	Stainless Steel	Ø22mm

A

260W



12mm

VARIABLE
SPEED

Sanding arm adjustable by up to 60°.

A SBS260

12mm Variable Speed Belt Sander 260W

Compact lightweight design featuring adjustable arm up to 60° ideal for use in bodyshops and reaching inaccessible areas. Variable speed power control. Push to lock and release sanding arm for easy belt changing. Includes a detachable exhaust, making it suitable for use with extraction systems.

Belt Size:	12 x 456mm
Motor Power:	260W
Supply:	230V
No-Load Speed:	772-1200rpm
Plug Type:	3-Pin
Power Supply Cable Length:	2m
Weight:	1.11kg
Accessories:	Sanding Belts (x2), Detachable Exhaust

B-D

Ø125mm

SV20
SERIES

B-D SEE BELOW

20V Ø125mm Cordless Random Orbital Palm Sander

Refer to individual Model No's for full specification.

Model No:	Type:	Contents:
B CP20VOS	Body Only	Orbital Palm Sander
C CP20VOSKIT1	Kit	CP20VOS - Orbital Palm Sander CP20VBP2 - 2Ah Battery CP20VMC - Battery Charger CP1200CB - Canvas Storage Bag
D CP20VOSKIT	Kit	CP20VOS - Orbital Palm Sander CP20VBP2 - 2Ah Battery CP20VBP4 - 4Ah Battery CP20VMC - Battery Charger CP1200CB - Canvas Storage Bag

E

Ø125mm

240W



Siegen

E S0125

Ø125mm Dual Action Palm Sander 240W

Lightweight, compact palm sander with soft grip for added comfort. Dual action orbit of Ø3mm allows use for various sanding applications. Powered by a 240W motor with on/off switch. Features a self-contained dust extraction port with dust collection bag. Fitted with Ø125mm hook-and-loop backing pad and supplied with two sanding discs.

Pad Size:	Ø125mm
Motor Power:	240W
Supply:	230V
No-Load Speed:	12000rpm
Orbit Size:	Ø3mm
Plug Type:	3-Pin
Power Supply Cable Length:	1.7m
Weight:	1.17kg

F

Ø150mm

350W

VARIABLE
SPEED

F DAS150PS

Ø150mm Variable Speed Brushless Electric Palm Sander 350W

Ergonomic and compact lightweight sander. Brushless motor with constant speed control even whilst under load. 7-Stage variable speed control. Digital display. Supplied with dust-free Ø150mm backing pad, four sanding discs and dust extraction hose.

Motor Power:	350W
No-Load Speed:	4000-10000rpm
Thread Size:	5/16"UNF
Orbit Size:	Ø5mm
Pad Size:	Ø150mm
Replacement DA Backing Pad:	PTC/150VA
Supply/Plug Type:	230V/3-Pin
Power Supply Cable Length:	2m
Weight:	1.38kg



A DAS150T
Ø150mm Dual Action Variable Speed Sander 710W

Patented eccentric assembly with sealed double bearings give Ø9mm orbital diameter. Variable speed control from 2000-4600rpm. Alloy bevel gear head with smooth composite motor housing for added comfort. Side mounted slider type power control with power lock. Supplied with Ø150mm hook-and-loop pad and handle.

Pad Size:	Ø150mm
Thread Size:	5/16"UNF
Motor Power:	710W
Supply/Plug Type:	230V/3-Pin
Power Supply Cable Length:	2m
No-Load Speed:	2000-4600rpm
Orbit Size:	Ø9mm
Weight:	2.45kg
Replacement Hook-and-Loop Pad:	PTC/150VA
Optional Self-Adhesive Pad:	PTC/150SA



B DAS149
Ø150mm Dual Action Sander/Polisher 600W

Lightweight, compact sander with variable speed control from 1500-6800rpm. Dual action orbit of Ø8mm helps cover more surface. Also suitable for polishing when fitted with Model No. PTC115VA516 Backing Pad (not included).

Pad Size:	Ø150mm
Thread Size:	5/16"UNF
Motor Power:	600W
Supply/Plug Type:	230V/3-Pin
Power Supply Cable Length:	2m
No-Load Speed:	1500-6800rpm
Orbit Size:	Ø8mm
Weight:	2.3kg
Replacement Hook-and-Loop Pad:	PTC/150VA
Optional Self-Adhesive Pad:	PTC/150SA
Optional Hook-and-Loop Pad (For Polishing Heads):	PTC115VA516



C DAS151
Ø150mm Dual Action Variable Speed Dust-Free Sander 750W

Features variable speed control ranging from 4000-7000rpm. Rotating self-contained dust extraction port with dust collection bag. Alloy bevel gear head with composite motor housing. Supplied with Ø150mm hook-and-loop backing pad and side handle.

Pad Size:	Ø150mm
Motor Power:	750W
Supply/Plug Type:	230V/3-Pin
Power Supply Cable Length:	2m
No-Load Speed:	4000-7000rpm
Orbit Size:	Ø3.5mm
Weight:	2.5kg



D OS400
Ø150mm Random Orbital Electric Sander 400W

Ø5mm Orbit designed specifically for use on car body repairs. 6-Stage variable speed control from 4000-10000rpm. Ergonomic rubberised gear head casing for added comfort and grip during use. Supplied with Ø150mm hook-and-loop backing pad, spare brushes and hex key.

Pad Size:	Ø150mm
Thread Size:	M8
Motor Power:	400W
Supply/Plug Type:	230V/3-Pin
Power Supply Cable Length:	5m
No-Load Speed:	4000-10000rpm
Orbit Size:	Ø5mm
Weight:	2kg



E OS600
Ø150mm Random Orbital Electric Sander 600W

Ø9mm Orbit designed specifically for use on car body repairs. 6-Stage variable speed control from 3200-7200rpm. Ergonomic rubberised gear head casing for added comfort and grip during use. Supplied with Ø150mm hook-and-loop backing pad, side handle, spare brushes and hex key.

Pad Size:	Ø150mm
Thread Size:	M8
Motor Power:	600W
Supply/Plug Type:	230V/3-Pin
Power Supply Cable Length:	5m
No-Load Speed:	3200-7200rpm
Orbit Size:	Ø9mm
Weight:	2.5kg





A ER150P
Ø150mm Car Polisher 60W

Random orbital polisher with Ø150mm 3-ply foam pad and two polishing bonnets. Smooth operation provides even buffing/polishing with no hot spots. Impact resistant ABS housing with twin grips.

Supply/Plug Type:	230V/3-Pin
Motor Power:	60W
No-Load Speed:	3800rpm
Pad Size:	Ø150mm
Power Supply Cable Length:	4m
Replacement Backing Pad:	ER150P.BP
Replacement Bonnet Terry Cloth:	ER150P.TB
Replacement Bonnet Synthetic Fleece:	ER150P.WB



B ER230P
Ø230mm Car Polisher 110W

Random orbital polisher with Ø230mm 5-ply foam pad and two polishing bonnets. Smooth operation provides even buffing/polishing with no hot spots. Impact resistant ABS housing with 360° grip.

Supply/Plug Type:	230V/3-Pin
Motor Power:	110W
No-Load Speed:	3300rpm
Pad Size:	Ø230mm
Power Supply Cable Length:	4m
Replacement Backing Pad:	ER230P.BPV2
Replacement Bonnet Terry Cloth:	ER230P.TB
Replacement Bonnet Synthetic Fleece:	ER230P.WB



C CP2518L
18V Ø240mm Cordless Polisher

Cordless random orbital polisher with Ø240mm foam backing pad and polishing bonnet. Smooth operation provides even buffing/polishing with no hot spots. Adjustable handles provide a choice of three working positions, making it suitable for various tasks. Impact resistant housing with soft grip handles. Supplied with 18V Lithium-ion battery pack and battery charger.

Battery:	18V 1.3Ah Lithium-ion
No-Load Speed:	2500rpm
Pad Size:	Ø240mm
Replacement Backing Pad:	CP2518L.SBP
Replacement Bonnet Terry Cloth:	ER230P.TB
Replacement Bonnet Synthetic Fleece:	CP2518L.BSF
Replacement Battery Pack:	CP2518LBP



D ER1700P
Ø180mm Lightweight Polisher 1100W

Powerful 1100W motor enclosed in a lightweight housing. Maintains high torque levels at low speeds, ideal for polishing. Variable speed control from 600-3000rpm. Spindle lock for fast and easy pad/foam head changes. Supplied with side handle, backing pad and polishing bonnet.

Pad Size:	Ø180mm
Thread Size:	M14 x 2mm
No-Load Speed:	600-3000rpm
Motor Power:	1100W
Supply/Plug Type:	230V/3-Pin
Power Supply Cable Length:	3m
Weight:	2.4kg



E ER1700PD
Ø180mm Lightweight Digital Polisher 1100W

Powerful 1100W motor enclosed in a lightweight housing. Maintains high torque levels at low speeds, ideal for polishing. Digital display for variable speed control from 1000-3000rpm, stepping-up in 500rpm increments. Features a top mounted slide-button on/off switch allowing for a smooth, comfortable main handle grip. Spindle lock for fast and easy pad/foam head changes. Includes two handles - traditional side handle or over-the-top style 'D' handle, backing pad and polishing bonnet. Supplied in storage case.

Pad Size:	Ø180mm
Thread Size:	M14 x 2mm
No-Load Speed:	1000-3000rpm
Motor Power:	1100W
Supply/Plug Type:	230V/3-Pin
Power Supply Cable Length:	2m
Weight:	2.5kg





A OP750
Ø150mm Orbital Polisher 750W

Ø21mm Orbit specifically designed for use in the bodyshop. 6-Stage variable speed control ranging from 2000-4500rpm. Vibration reducing motor and rubberised gear head cover allow for greater comfort and reduce user fatigue. Soft start for greater control. Speed stabilizer to ensure constant speed output. Supplied with Ø150mm backing pad, two Ø180mm foam polishing pads, side handle, wrench and spare brushes.

Motor Power:	750W
Supply/Plug Type:	230V/3-Pin
Power Supply Cable Length:	5m
No-Load Speed:	2000-4500rpm
Thread Size:	M8
Orbit Size:	Ø21mm
Pad Size:	Ø150mm
Noise Power/Pressure:	93/82dB(A)
Vibration/Uncertainty:	4.919/1.5m/s ²



B RP1500
Ø150mm Rotary Polisher 1050W

Powerful 1050W motor enclosed in a heavy-duty composite housing. 6-Stage variable speed control from 700-2500rpm. Soft start for greater control. Vibration reducing motor to allow for longer working times with reduced fatigue. Spindle lock for fast and easy pad changes. Double-torque gearing system. Supplied with Ø150mm backing pad, Ø180mm foam polishing pads (x2), side handle, wrench and spare brushes.

Motor Power:	1050W
Supply/Plug Type:	230V/3-Pin
Power Supply Cable Length:	5m
No-Load Speed:	700-2500rpm
Thread Size:	M14 x 2mm
Pad Size:	Ø150mm



C SPK600
600W Spot Polisher Kit

Rotary spot polisher kit with ergonomic slim body design. 6-Stage variable speed control from 700-2500rpm. Spindle lock for easy pad and shaft changes. Soft start for greater control. Supplied with a selection of polishing pads, side handle and spare brushes.

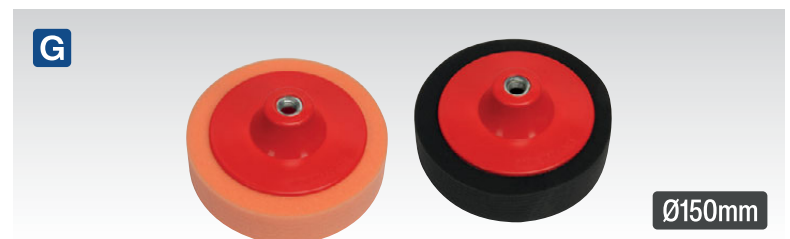
Motor Power:	600W
Supply/Plug Type:	230V/3-Pin
Power Supply Cable Length:	5m
No-Load Speed:	700-2500rpm
Thread Size:	M14 x 2mm
Pad Size:	1-3"
Optional Ø40mm Polisher Pad Kit:	SPK600ACC1
Optional Ø56mm Polisher Pad Kit:	SPK600ACC2



D-F SEE BELOW
20V Ø180mm Cordless - Brushless Rotary Polisher

Refer to individual Model No's for full specification.

Model No:	Type:	Contents:
D CP20VRPX	Body Only	Polisher
E CP20VRPXKIT1	Kit	CP20VRPX - Polisher CP20VBP4 - 4Ah Battery CP20VMC - Battery Charger CP1200CB - Canvas Storage Bag
F CP20VRPXKIT	Kit	CP20VRPX - Polisher CP20VBP4 - 4Ah Battery (x2) CP20VMC - Battery Charger CP1200CB - Canvas Storage Bag



G SEE BELOW
Ø150mm Buffing & Polishing Foam Heads

Manufactured from European foam. Suitable for buffing and polishing vehicle bodywork. Supplied with M14 x 2mm female thread.

Model No:	Type:	Size:	Thread Size:
PTC150CHM	Medium	Ø150mm x 50mm	M14 x 2mm
PTC150CHS	Soft	Ø150mm x 50mm	M14 x 2mm



A MS875PS

Ø180mm Variable Speed Sander/Polisher 1200W

Features variable speed control giving a range suitable for sanding and polishing between 600-3300rpm. Heavy-duty aluminium gear head with composite motor housing. Supplied with Ø180mm backing pad, polishing bonnet, D-Handle and side handle allowing use for various tasks. Suitable for left or right-handed use.

Pad Size:	Ø180mm
Thread Size:	M14 x 2mm
No-Load Speed:	600-3300rpm
Motor Power:	1200W
Supply/Plug Type:	230V/3-Pin
Power Supply Cable Length:	2m
Weight:	3.2kg



B MS900PS

Ø170mm Variable Speed Sander/Polisher 1300W

Variable speed control suitable for sanding and polishing. Speeds vary from 1400-3000rpm. Alloy bevel gear head with composite motor housing. Supplied with Ø170mm backing pad and side handle.

Pad Size:	Ø170mm
Thread Size:	M14 x 2mm
No-Load Speed:	1400-3000rpm
Motor Power:	1300W
Supply/Plug Type:	230V/3-Pin
Power Supply Cable Length:	2m
Weight:	3.8kg



C CP2812V

12V Cordless Mini Sander/Polisher Kit

Features variable speed control giving a range suitable for sanding and polishing up to 3000rpm. Soft grip handle for comfort and control. Locking swivel adjustment from pistol to straight type. Includes battery condition indicator. Supplied in canvas bag with 12V Lithium-ion battery pack, battery charger and a range of polishing and sanding heads.

Battery:	12V 1.5Ah Lithium-ion
Pad Size:	Ø75mm
Thread Size:	1/4"UNC
No-Load Speed:	3000rpm
Battery Model No:	CP2812VBP
Weight:	1.6kg



D MS925PS

Ø180mm Variable Speed Sander/Polisher 1400W

Ergonomic design with comfortable soft grip handles. Variable speed control with 7-speed settings from 600-3000rpm make this suitable for both sanding and polishing. Alloy bevel gear head with protective cover coupled to a composite motor housing. Soft start, constant speed motor provides longer lasting performance. Carbon brush caps and mesh filters for simple maintenance. Supplied with Ø180mm backing pad, polishing bonnet, D-Handle and side handle.

Pad Size:	Ø180mm
Thread Size:	M14 x 2mm
No-Load Speed:	600-3000rpm
Motor Power:	1400W
Supply/Plug Type:	230V/3-Pin
Power Supply Cable Length:	1.8m
Weight:	4kg

A TDWS600

Ø215mm Long Reach Drywall Electric Sander 600W

Variable speed control telescopic drywall sander with 600W motor. Ergonomic design with soft grip handle for added comfort during use. Spring loaded sanding head with Ø215mm sanding pad for easy use on a large surface area. 0°-90° Pivoting head with two pitch points allowing the user to work above head height easily. Fully extendable to 1650mm. To be used in conjunction with an extractor, see website for all models available. Supplied with Ø225mm sanding disc and flexible pipe with connector for dust extraction.

Pad Size:	Ø215mm
No-Load Speed:	600-1500rpm
Motor Power:	600W
Noise Power/Pressure:	98/87dB(A)
Vibration/Uncertainty:	3.48/1.5m/s ²
Supply:	230V
Plug Type:	3-Pin
Power Supply Cable Length:	4m
Replacement Sanding Disc:	(see B) SSD05
Weight:	13.5kg

A NEW

Ø215mm

600W

VARIABLE SPEED



B NEW



B SSD05

Ø225mm Hook-and-Loop Sanding Disc Set

Hook-and-Loop Sanding discs suitable for use with Sealey Drywall Sanders. For full details, see page 938.



D NEW

Ø215mm

1050W

VARIABLE SPEED



D DWS215

Ø215mm Handheld Drywall Electric Sander 1050W

Variable speed control drywall sander with 1050W motor. Ergonomic design with soft grip handle for added comfort during use. Spring loaded sanding head with Ø215mm sanding pad for easy use on a large surface area. The sanding head also has a suction regulator to allow the user to vary the degree of suction. Supplied with Ø225mm sanding discs (x8), flexible pipe for dust extraction, dust bag and side handle.

No-Load Speed:	1500-2300rpm
Pad Size:	Ø215mm
Motor Power:	1050W
Noise Power/Pressure:	99/88dB(A)
Vibration/Uncertainty:	4.815/1.5m/s ²
Supply:	230V
Replacement Sanding Disc:	(see B) SSD05
Plug Type:	3-Pin
Power Supply Cable Length:	4m
Weight:	2.52kg

C



Wet & Dry

STAINLESS STEEL

20L

1400W

230V



Power Outlet

C PC200SDAUTO

20L Wet & Dry Industrial Vacuum Cleaner 1400W with Stainless Drum & Auto Start

For full details, see page 1319.

A 230V 900W

VARIABLE
SPEED

For our full range of Saw
Blades, see pages 930 to 931.

A SRS850

Reciprocating Saw 900W

Powerful reciprocating saw designed to cut various materials including metal and wood. Handle can be rotated 90° in either direction for greater access and control when working in confined spaces. Fitted with a 2m heavy-duty rubberised cable. Durable composite housing with soft grip for added comfort. Built-in quick blade change system. Blade not supplied, requires SBS3150 reciprocating saw blades.

Motor Power:	900W
Supply/Plug Type:	230V/3-Pin
Power Supply Cable Length:	2m
No-Load Speed:	0-3000spm
Vibration/Uncertainty:	18.905/1.5m/s ²
Weight:	2.9kg

B-D

For compatible Nails and
Staples, see page 1124.

SV20
SERIES

B-D SEE BELOW

20V 18G Cordless Staple/Nail Gun

Refer to individual Model No's for full specification.

Model No:	Type:	Contents:
B CP20VNG	Body Only	Staple/Nail Gun
C CP20VNGKIT1	Kit	CP20VNG - Staple/Nail Gun CP20VBP2 - 2Ah Battery CP20VMC - Battery Charger CP1200CB - Canvas Storage Bag
D CP20VNGKIT	Kit	CP20VNG - Staple/Nail Gun CP20VBP2 - 2Ah Battery CP20VBP4 - 4Ah Battery CP20VMC - Battery Charger CP1200CB - Canvas Storage Bag

E

VARIABLE
SPEED1220W
230V

E PM80L

80L Electric Paddle Mixer 1220W

Powerful, lightweight electric mixer built into heavy-duty composite casing with a mixing volume of up to 80L. 2-Speed settings and soft start allow for greater control when mixing a variety of materials. Supplied with two mixing paddles capable of mixing paint, varnish, tile adhesive, cement, plaster, mortar, as well as a number of other liquid and dense materials.

Motor Power:	1220W
Supply/Plug Type:	230V/3-Pin
Power Supply Cable Length:	2m
No-Load Speed:	0-800rpm
Mixing Capacity:	80L
Paddle Size:	Ø120mm
Thread:	M14
Weight:	4.7kg

F

VARIABLE
SPEED1400W
230V

F-G SEE BELOW

120L Electric Paddle Mixers 1400W

Powerful electric mixers built into heavy-duty composite casing with rubber grips for added comfort when in use. Mixing volume of up to 120L. 6-Speed settings and soft start allow for greater control when mixing a variety of materials. Supplied with two mixing paddles capable of mixing paint, varnish, tile adhesive, cement, plaster, mortar as well as a number of other liquid and dense materials.

G

VARIABLE
SPEED1400W
110V

	F	G
Model No:	PM120L	PM120L110V
Motor Power:	1400W	1400W
Supply/Plug Type:	230V/3-Pin	110V/Yellow - 16A - 2P+E
Power Supply Cable Length:	2m	2m
No-Load Speed:	0-800rpm	0-800rpm
Mixing Capacity:	120L	120L
Paddle Size:	Ø140mm	Ø140mm
Thread:	M14	M14
Weight:	7.5kg	7.5kg



A SMT300Q
Variable Speed Quick Change Oscillating Multi-Tool 300W
 One tool suitable for multiple tasks such as sanding, scraping and cutting various materials. Variable speed with 300W motor and sealed bearings. Quick release lever makes changing blades fast and simple, without the need of additional tools. Includes four sanding discs, backing pad, cutting blade and scraper blade, all supplied in a convenient storage case. Supplied with removable dust extraction pipe for cleaner sanding applications.

Motor Power:	300W
Supply/Plug Type:	230V/3-Pin
Power Supply Cable Length:	2m
No-Load Speed:	15000-21000rpm
Weight:	1.48kg
Accessories:	Cutting Blade, Scraper Blade, Sanding Discs (x4), Triangle Backing Pad



B-D SEE BELOW
20V Cordless Oscillating Multi-Tool
 Refer to individual Model No's for full specification.

Model No:	Type:	Contents:
B CP20VMT	Body Only	Oscillating Multi-Tool
C CP20VMTKIT1	Kit	CP20VMT - Oscillating Multi-Tool CP20VBP2 - 2Ah Battery CP20VMC - Battery Charger CP1200CB - Canvas Storage Bag
D CP20VMTKIT	Kit	CP20VMT - Oscillating Multi-Tool CP20VBP2 - 2Ah Battery CP20VBP4 - 4Ah Battery CP20VMC - Battery Charger CP1200CB - Canvas Storage Bag



E SMTA1
3pc Multi-Tool Blade Set
 Includes offset cutting blade, offset scraper and a straight scraper. Universal fitting for use with Sealey and other brands of multi-tool.

Contents: Offset Cutting Blade, Offset Scraper, Straight Scraper



F SMTA7
20pc Multi-Tool 90mm Sanding Sheet Set
 Includes 5pc of each grit P60, P80, P120 and P240 with hook-and-loop backing. Suitable for use with Model No. SMTA8 backing pad.

Contents: P60, P80, P120, P240 Grit (5 of each)



G SMTA12
76mm Multi-Tool Triangle Backing Pad
 Hook-and-loop backing pad for use with Sealey and other brands of multi-tool.



H SMTA60TC
60mm Multi-Tool Blade Ceramic
 Diamond blade suitable for cutting ceramic. 60mm Cutting length.



I SMTA65TC
65mm Multi-Tool Blade Ceramic
 Carbide blade suitable for cutting ceramic. 65mm Cutting length.



K SMTB3
3pc Quick Change Multi-Tool Scraper Blade Set
 Set of three universal quick change multi-tool attachments finished with blue blades. Cutting blades suitable for wood and metal. Universal fitting for use with Sealey and other brands of multi-tool.

Contents: 28 x 50mm Sharp Scraper, 52 x 45mm Flexible Scraper, 52 x 26mm Rigid Scraper



L SMTC3
3pc Quick Change Multi-Tool Cutting Blade Set
 Set of three universal quick change multi-tool attachments finished with blue blades. Cutting blades suitable for wood and metal. Universal fitting for use with Sealey and other brands of multi-tool.

Contents: 10mm Bi-Metal Cutting Blade, 32mm Offset Bi-Metal Cutting Blade, 65mm Offset Bi-Metal Cutting Blade



J SMTS7
7pc All-Purpose Multi-Tool Blade Set
 Set of seven universal quick change multi-tool attachments designed to perform a range of tasks. Universal fitting for use with Sealey and other brands of multi-tool.

Contents: 34mm HCS blade suitable for cutting wood, 87mm HCS blade suitable for cutting wood, 35mm Carbide blade suitable for cutting ceramic, 34mm HCS blade suitable for cutting wood, 50mm Stainless steel blade suitable for cutting ceramic, 65mm Carbide blade suitable for cutting ceramic, 76mm Multi-Tool Triangle Backing Pad

A

Variable
Temperature

Premier

A HS100**1800W 3-Speed Hot Air Gun 50/420/650°C**

Features three speeds and temperature control. Suitable for paint stripping, soft soldering, removing sticky labels and defrosting frozen pipes. Supplied with four nozzles and a scraper, making various tasks possible. Gun is designed to stand vertically, allowing use as a safe Bunsen burner alternative.

Motor Power:	1800W
Supply/Plug Type:	230V/3-Pin
Power Supply Cable Length:	2m
Temperature Range:	50/420/650°C
Airflow:	250/400/650L/min

B



Premier

Variable
Temperature**B HS102K****Plastic Welding Kit including HS102 Hot Air Gun**

Hot air gun kit supplied with two plastic welding nozzles, a starter pack of ABS welding rods and a concise instruction manual. Hot air gun specification as Model No. HS102.

Motor Power:	2000W
Supply/Plug Type:	230V/3-Pin
Power Supply Cable Length:	2m
Temperature Range:	50-600°C
Airflow:	250/500L/min
Contents:	HS102 Hot Air Gun, Plastic Welding Nozzle, Reduction Nozzle, Pack of 36 ABS Rods

C



40W

C AK292**40W Electric Glue Gun**

Composite housing with comfortable handle and trigger feed control. Fitted with 1.1m cable and 3-pin plug. Suitable for hardwoods, softwoods, plastics and other similar materials. Includes two glue sticks.

Consumable Parts: AK292/2 - All Purpose Glue Stick Ø11mm - Pack of 25

D

SV20
SERIES**D CP20VGGKIT1****20V 2Ah SV20 Series Cordless Glue Gun Kit**

Refer to individual Model No's for full specification.

Contents:	CP20VGG - Glue Gun CP20VBP2 - 2Ah Battery CP20VMC - Battery Charger CP1200CB - Canvas Storage Bag
-----------	--

E



80W

**E AK2920****80W Glue Gun**

Ready to use in less than 5 minutes. Composite housing incorporating folding stand. Once fully heated, mains cable can be unplugged from body for short periods of cordless use. On/off switch and trigger feed control. Suitable for Ø11 x 100mm glue sticks. Two glue sticks can be loaded at once.

Consumable Parts: AK292/2 - All Purpose Glue Stick Ø11mm - Pack of 25



HS100, HS102 and HS102K may be stood vertically, allowing use as a Bunsen burner alternative.

F



450W

Magnetic

F AK2921**450W Glue Gun**

Ready to use in less than five minutes. Once fully heated, mains cable can be unplugged from body for short periods of cordless use. Composite housing with soft grip for added comfort. On/off switch and trigger feed control. Suitable for Ø11 x 100mm glue sticks. Two glue sticks can be loaded at once. Features magnets in handle base for adhering to metal stand when not in use.

Consumable Parts: AK292/2 - All Purpose Glue Stick Ø11mm - Pack of 25

G

Lithium
RECHARGEABLE

3.7V

G AK2923**3.7V Cordless Glue Gun**

Lightweight cordless glue gun powered by a 3.7V 1.3Ah Lithium-ion battery. Features LED light indicators to show when fully heated up. Ready to use in 20 seconds. Operating time of 30 minutes on a full charge. Supplied with four glue sticks and a USB charging cable. Suitable for Ø7.2mm glue sticks.

Motor Power:	3.7V 1.3Ah Li-ion
Operating Time:	30 Minutes
Charging Time:	3-4hr
Weight:	0.265kg
Consumable Parts:	AK2923/2 - All Purpose Glue Stick Ø7.2mm - Pack of 50



A HS105
1600W Hot Air Gun 375°C/500°C
 2-Step switch for temperature and airflow control. Gun can also stand vertically. Suitable for paint stripping, soft soldering, removing sticky labels and defrosting frozen pipes. Nozzles available separately.

Motor Power:	1600W
Supply/Plug Type:	230V/3-Pin
Power Supply Cable Length:	2m
Temperature Range:	375°C/500°C
Airflow:	300, 500L/min



J HS103K
2000W Hot Air Gun Kit 350°C/600°C
 Suitable for paint stripping, soft soldering, removing sticky labels and defrosting frozen pipes. Fitted with 2-step temperature control switch. Supplied with four nozzles, stripper, scraper handle and three scraper blades in a storage case.

Motor Power:	2000W
Supply/Plug Type:	230V/3-Pin
Power Supply Cable Length:	1.8m
Temperature Range:	350°C/600°C
Airflow:	480L/min
Contents:	Hot Air Gun, Four Nozzles, Stripper, Scraper Handle, Three Scraper Blades



B HS107K
2000W Variable Temperature Hot Air Gun Kit
 2-Step airflow control switch, with variable temperature range on both levels. Gun is designed to stand vertically, allowing use as a safe Bunsen burner alternative. Suitable for paint stripping, soft soldering, removing sticky labels and defrosting frozen pipes. Supplied with four nozzles and scraper, all in a storage case.

Motor Power:	2000W
Supply/Plug Type:	230V/3-Pin
Power Supply Cable Length:	2m
Temperature Range:	50-450°C/90-600°C
Airflow:	250, 500L/min
Contents:	Hot Air Gun, Four Nozzles, Scraper



K HS104K
2000W Deluxe Hot Air Gun Kit with LCD Display
 Fitted with variable electronic temperature control and LCD temperature display. Suitable for paint stripping, soft soldering, removing sticky labels and defrosting frozen pipes. Supplied with four nozzles, stripper, scraper handle and three scraper blades in a storage case.

Motor Power:	2000W
Supply/Plug Type:	230V/3-Pin
Power Supply Cable Length:	1.8m
Temperature Range:	80°C/80-600°C
Airflow:	480L/min
Contents:	Hot Air Gun, Four Nozzles, Stripper, Scraper Handle, Three Scraper Blades



C-F SEE BELOW
Accessories for HS105 & HS107K
 Suitable for use with Model No's HS105 & HS107K Hot Air Guns.

Model No:	Description:
C HS107K.26	Fish Tail Nozzle
D HS107K.27	Wide Scraper
E HS107K.28	Deflector
F HS107K.30	Scraper



G-I SEE BELOW
Hot Air Gun Accessories
 Suitable for Model No's HS100, HS102 and HS102K Hot Air Guns. Available separately.

Model No:	Description:
G HS102K/1	Plastic Welding Rods (Pack of 36)
H HS102K/2	Plastic Welding Nozzle
I HS102K/3	9mm Reduction Nozzle



L HS102
2000W 3-Speed Hot Air Gun 50-600°C
 Equipped with triple-range variable electronic temperature control. Suitable for paint stripping, soft soldering, removing sticky labels and defrosting frozen pipes. Additionally suitable for plastic welding with optional plastic welding nozzles. Ceramic heating element for constant temperature control. Nozzles supplied separately. Gun is designed to stand vertically, allowing use as a safe Bunsen burner alternative.

Motor Power:	2000W
Supply/Plug Type:	230V/3-Pin
Power Supply Cable Length:	2m
Temperature Range:	50-600°C
Airflow:	250, 500L/min



A E540

40pc Multipurpose Rotary Tool & Engraver Kit

Multipurpose high-speed power tool with on/off and electronic variable speed controls. Stepless control between 10,000 and 32,000rpm. Spindle lock for fast tool changes. Supplied with a full range of tips, wheels, sanding discs/bands, dressing stone, chuck spanner and flexible rotary shaft. Suitable for carving, shaping, deburring, drilling, engraving, cutting and tool sharpening. Supplied in storage case.

Motor Power:	135W
Supply/Plug Type:	230V/3-Pin
Power Supply Cable Length:	1.8m
No-Load Speed:	10000-32000rpm
Collets:	2.3, 3mm
Twist Drills:	2.3, 3mm
Mounted Points:	10
Diamond Tipped Engravers:	2
Sanding Cylinder:	12.7 x 15mm
Contents:	Sanding Bands (x4), Sanding Discs (x3), Cutting Discs (x8), Polishing Wheels (x4), Dressing Stone, Spanner, Flexible Rotary Shaft

B E5188

219pc Multipurpose Rotary Tool & Engraver Kit

Multipurpose high-speed power tool with on/off and electronic variable speed controls. Stepless control between 8,000 and 35,000rpm. Spindle lock for fast tool changes. Supplied with a full range of tips, wheels, brushes, sanding discs/bands, dressing stone and chuck spanner. Suitable for carving, shaping, deburring, drilling, engraving, cutting and tool sharpening. Supplied in storage case.

Motor Power:	170W
Supply/Plug Type:	230V/3-Pin
Power Supply Cable Length:	1.7m
No-Load Speed:	8000-35000rpm Stepless
Collets:	1.5mm, 2.3mm (x2), 3.2mm
Twist Drills:	1.5mm (x2), 2.3mm (x2), 3.2mm (x2)
Mounted Points:	10pc
Diamond Tipped Engravers:	5pc
Sanding Cylinder:	6.4 x 12.7mm, 12.7 x 12.7mm

Contents: Sanding Bands (x12), Grinding Wheels (x12), Felt Wheels (x6), Cut-Off Wheels (x35), Cut-Off Wheel Heavy-Duty (x30), Sanding Disc 180Grit (x36), Sanding Disc 320Grit (x36), Steel Wire Brush (x3), Brass Wire Brush (x3), Nylon End Brush, Fibreglass Cut-Off Wheels (x5), Cloth Wheel, Rubber Emery Wheel, Flap Wheel, Dressing Stone, Flexible Rotary Shaft, Spanner, Spindle Lock Key, Polishing Compound, Selection of Drill Bits, Mandrels (x4)



C E541

13W Tungsten Carbide Tipped Tool Engraver

Multipurpose high-speed engraver with on/off switch and variable stroke adjustment, which gives more control on workpiece. Suitable for engraving and etching on wood, metal, plastic and glass. Supplied with tip and two stencils.

Motor Power:	13W
Supply/Plug Type:	230V/3-Pin
Power Supply Cable Length:	1.7m
Free Speed:	6000rpm
Tungsten Tip:	1.8mm
Contents:	Tungsten Carbide Tipped Engraving Head, Letter Template, Number Template



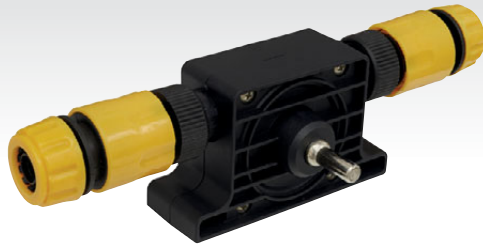
D-E SEE BELOW

12V 49pc Cordless Multipurpose Rotary Tool & Engraver Kit

Refer to individual Model No's for full specification.

Model No:	Type:	Contents:
D CP1207	Body Only	Rotary Tool
E CP1207KIT	Kit	CP1207 - Rotary Tool CP1200BP - 1.5Ah Battery (x2) CP1200MC - Battery Charger CP1200CB - Canvas Storage Bag

A



A TP51
Drill Powered Water Pump

Suitable for use with electric drill with output of 350W or more. Composite housing supplied with two 1/2" quick release couplings. Delivers up to 1200L/hr of fluid at 3000rpm. Suitable for water, organic solvents, motor oil, heating oil, insecticides, pesticides, liquid fertilizers and other non-aggressive liquids.

Suction Head: 3m

D



D TP53
Heavy-Duty Drill Powered Water Pump

Suitable for use with electric drills with output of 350W or more. Housed in a durable composite casing with 21mm inlet/outlet. Delivers up to 2200L/hr of fluid at 3000rpm. Suitable for water, organic solvents, motor oil, heating oil, insecticides, pesticides, liquid fertilizers and other non-aggressive liquids.

Delivery Pressure: 28psi @ 3000rpm
Suction Head: 3m

E



E AK2104
Angle Driver

Allows access with a power drill/driver to awkwardly positioned fixings. Suitable for 6mm hex bits and socket adaptors. Magnetic bit retention.

B



B DDE01
3.7V Vacuum Drill Dust Extractor

Vacuum holds unit to the wall for easy drilling. Suitable for drill bits up to Ø12mm. Features a horizontal and vertical spirit level. Laser light on the bottom for accurate positioning of holes, for example in a sequence or a square. Removable dust collection pod for easy emptying. Rechargeable Lithium-ion powered battery with USB cable.

Maximum Drilling Diameter: Ø12mm

F



F DRA02
Drill Powered Rivet Nut Adaptor

Suitable for use with electric drills with torque in excess of 15Nm. 1/4" Shank for easy fitting in to the drill chuck. Supplied with M3, M4, M5, M6 and M8 rivet nut mandrels. Suitable for use with aluminium, steel and stainless steel rivet nuts.

Maximum Speed: 1000rpm
Minimum Torque: 15Nm
Pulling Rods & Nut Sizes: M3, M4, M5, M6, M8
Rivet Nut Type: Aluminium, Steel, Stainless Steel

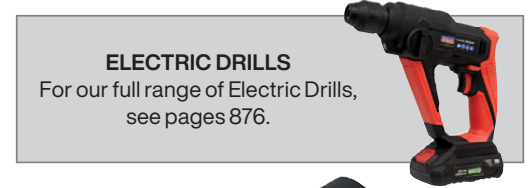
C NEW



C DDE02
Ø135mm Drill Dust Extractor Nozzle

Large bore diameter is suitable for large drill bits and core drills with a maximum size of Ø135mm. Maintains a clean and safer working environment. Dual air chamber provides suction to the wall as well as dust collection. Rubber seal keeps suction to the wall and stops dust from escaping. Adjustable hose nozzle can be swivelled so that user can reposition hose with ease during use. Hose nozzle is adaptable being able to fit hoses between Ø27mm and Ø58mm in diameter.

Maximum Drilling Diameter: Ø135mm



ELECTRIC DRILLS
For our full range of Electric Drills, see pages 876.

G



G DRA01
Drill Powered Riveter Adaptor

Suitable for use with electric drills with torque in excess of 11Nm. Fitted with 1/4" shank for easy fitting in to the drill chuck. Supplied with 2.4, 3.2, 4 and 4.8mm rivet nozzles. Suitable for use with aluminium, steel and stainless steel pop rivets.

Blind Rivet Type: Aluminium, Steel, Stainless Steel
Maximum Speed: 1000rpm
Minimum Torque Required: 11Nm
Nozzle Sizes: 2.4, 3.2, 4, 4.8mm

