

LUBRICATION

 [back to Section List](#)



AdBlue® Pumps & Accessories
656-657

Barrel Bunds
678-679

Bulk Grease Equipment
643

Containers
674

Diesel & Fluid Transfer
666-669

Drain Pans & Drip Trays
653-655

Drum Adaptors & Taps
681

Drum Racks & Spill Trays
680

Fuel Containers
676-677

Fuel Transfer Pumps
675

Funnels & Containers
671-674

Gear Oil Pumps
661

Grease Accessories
645-647

Grease Guns
640-645

Jerry Cans
677

Measuring Jugs
670-671

Oil & Fluid Extractors
648-649

Oil & Fluid Transfer Pumps
656-661

Oil Dispensing Systems
664-665

Oil Drainers
648-652

Oil Suction & Inspection Syringes
662

Parts Cleaning Tanks
685-687

Portable Dispensing Tanks
666-667

Spill Control
663

Ultrasonic Parts Cleaning Tanks
685



A AK451
Bulk Fill Mini Lever Type Grease Gun

Mini lever type bulk fill grease gun. Manufactured with a die-cast aluminium pump head, twist type air-bleed and black powder coated finish. Supplied with 150mm steel delivery tube and push-on hydraulic 4-jaw coupling.

Capacity:	120cm ³
Delivery Pressure:	6000psi
Delivery per Stroke:	0.55cm ³
Optional 300mm Flexible Delivery Hose:	GGHE300



B AK442
Mini Grease Gun

Mini push-action hand greaser. Ideal for limited access areas or where smaller amounts of grease are required. Supplied with rigid extension tube and delivery nozzle.

Capacity:	125cm ³
Delivery Pressure:	1000psi
Delivery per Stroke:	0.9cm ³
Length:	270mm



C AK51
100g Mini Grease Applicator

Mini grease applicator supplied with 100g lithium grease tube. Ideal for use in hard-to-reach areas such as engine bays and door hinges. Supplied with accurate dispensing nozzle for precision application. Replacement tubes are available, Model No. AK51C.

Replacement Grease Tube:	AK51C
--------------------------	-------



D AK481
Quick Release 3-Way Fill Pistol Type Grease Gun

Pistol style grease gun with contoured handle. Highly durable die-cast aluminium alloy pump head with air-bleed valve. Fitted with an innovative quick release mechanism to speed up the refill process. Features 3-way fill with cartridge, bulk or manual capability. Supplied with a rigid delivery tube and push-on hydraulic 4-jaw coupling. Accepts standard 400g cartridges.

Capacity:	400cm ³
Delivery Pressure:	4000psi
Delivery per Stroke:	0.71cm ³
Optional 300mm Flexible Delivery Hose:	GGHE300



E AK446
3-Way Fill Pistol Type Grease Gun

Die-cast pump head with air-bleed valve. 3-Way fill with cartridge, bulk or manual capability. Supplied with rigid delivery tube and push-on hydraulic 4-jaw coupling. Accepts standard 400g cartridges.

Capacity:	500cm ³
Delivery Pressure:	4500psi
Delivery per Stroke:	1.25cm ³
Optional 300mm Flexible Delivery Hose:	GGHE300



F AK55
Push Type Mini Grease Gun

Used to lubricate hammer mechanisms in impact wrenches. Die-cast aluminium head with two threaded pockets to hold spare needle nozzles. Includes three nozzle sizes, 0.7mm, 1mm and 1.4mm to ensure precise placement of lube. 3oz Cartridge capacity. Easy one-handed operation.



G SGC1
400g EP2 Lithium Grease Cartridge

Multipurpose EP2 Lithium grease cartridge suitable for use with all plunger type grease guns. Ideal for a wide range of applications.

Model No:	Pack Quantity:
SGC1	1
SGC12	12



H SCS106
400g EP2 Lithium Complex Grease Cartridge

High quality EP2 lithium complex grease cartridge. Suitable for applications involving extreme pressure or changes in temperature.

Size:	400g
-------	------



I SCW3
Hand Wipes Bucket - Pack of 150

For full details, see page 1139.



A AK445

3-Way Fill Side Lever Grease Gun

3-Way fill with cartridge, bulk or manual capability. Supplied with rigid delivery tube and push-on hydraulic 4-jaw coupling. Contoured pump handle. Accepts standard 400g cartridges.

Capacity:	500cm ³
Delivery Pressure:	7000psi
Delivery per Stroke:	1.2cm ³
Optional 300mm Flexible Delivery Hose:	GGHE300



B AK44

3-Way Fill Side Lever Grease Gun

Die-cast pump head with air-bleed valve. 3-Way fill with cartridge, bulk or manual capability. Supplied with rigid delivery tube and push-on hydraulic 4-jaw coupling. Contoured pump handle. Accepts standard 400g cartridges.

Capacity:	500cm ³
Delivery Pressure:	10000psi
Delivery per Stroke:	1.2cm ³
Optional 300mm Flexible Delivery Hose:	GGHE300



C AK443

3-Way Fill Side Lever Grease Gun

Die-cast pump head. 3-Way fill with cartridge, bulk or manual capability. Supplied with rigid delivery tube and push-on hydraulic 4-jaw coupling. Contoured pump handle. Accepts standard 400g cartridges.

Capacity:	500cm ³
Delivery Pressure:	8000psi
Delivery per Stroke:	1.2cm ³
Optional 300mm Flexible Delivery Hose:	GGHE300



D AK4404

Quick Release 3-Way Fill Side Lever Grease Gun

Highly durable die-cast aluminium alloy pump head with air-bleed valve. Fitted with an innovative quick release mechanism to speed up the refill process. Features 3-way fill with cartridge, bulk or manual capability. Supplied with a rigid delivery tube, push-on hydraulic 4-jaw coupling and contoured rubber pump handle. Accepts standard 400g cartridges.

Capacity:	400cm ³
Delivery Pressure:	7000psi
Delivery per Stroke:	0.71cm ³
Optional 300mm Flexible Delivery Hose:	GGHE300



E AK4402

3-Way Fill Heavy-Duty Twin Piston Grease Gun

Highly durable cast iron pump head, features dual piston design for high-volume performance. 3-Way fill with cartridge, bulk or manual capability. Supplied with rigid delivery tube and push-on hydraulic 4-jaw coupling. Rubber gripped grease tube and handle for easy grip. Features variable stroke for controlled grease volume. Half stroke gives low pressure and low volume, full stroke provides high pressure and high volume delivery. Accepts standard 400g cartridges.

Capacity:	500cm ³
Delivery Pressure:	4000psi
Delivery per Stroke:	2.14cm ³
Optional 300mm Flexible Delivery Hose:	GGHE300



F AK48

3-Way Fill 2-Way Operating Heavy-Duty Grease Gun

Highly durable die-cast aluminium alloy pump head. Features 3-way fill with cartridge, bulk or manual capability. Fitted with 2-way operating extendable handle; pistol type, ideal for use in confined spaces and lever type, providing high pressure and volume. Supplied with rigid delivery tube, push-on hydraulic 4-jaw coupling and 300mm flexible delivery tube. Rubber gripped grease tube and handle for easy grip. Features variable stroke for controlled grease volume; half stroke gives low-pressure/low-volume, full stroke provides high pressure/high-volume delivery. Accepts standard 400g cartridges.

Capacity:	400cm ³
Delivery Pressure:	6000psi
Delivery per Stroke:	0.71cm ³



Vari Stroke

HEAVY DUTY

HEAVY DUTY

E



A AK4403
Double Lever Grease Gun

Robust, double arm grease gun with aluminium die-cast head. For use with screw-type grease cartridges, using vacuum suction to ensure full utilization of grease cartridge, as well as eliminating priming issues associated with conventional grease guns. Features a protective cap for hose storage preventing contamination. 1/8"BSPT Thread and supplied with adaptor to fit most screw-type cartridges on the market. Use with Model No's SCS107 and SCS108. Zinc plated lever handles and rubber ergonomic grips. Fitted with minimal wearing parts to ensure prolonged life and supplied with 300mm(12") delivery hose and 4-jaw coupler.

Delivery Pressure:	7500psi
Delivery per Stroke:	0.8cm ³



B BP01
Portable Bearing Grease Packer Tool

Suitable for packing bearings with an even spread of grease. Works on most tapered roller bearings fitted on cars, boats, trailers, etc. Clean and quick way to pack new or old bearings with grease, while expelling old grease. Lightweight and handy, with less waste than conventional grease packers, while being less messy too. No air line or grease gun required. Transparent, impact resistant cup allows grease level check.



C-D SEE RIGHT

Featuring screw-type connection to be used with Model No. SCS107 400g Screw-Type Grease Cartridges. Vacuum suction ensures full utilization of grease cartridge and eliminates priming issues associated with conventional grease guns. Manufactured using high grade aluminium die-cast head and steel and supplied with rigid or flexible extension tube and coupler.



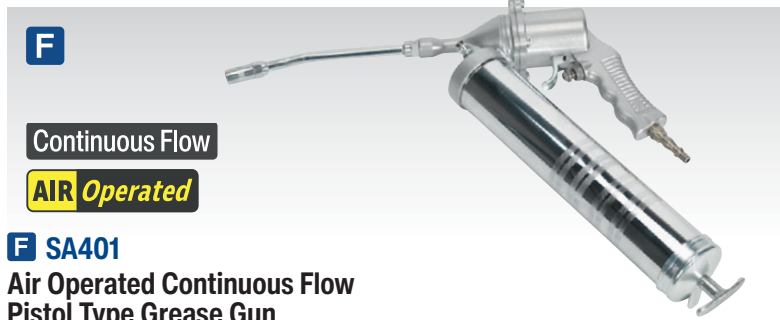
	C	D
Model No:	AK53	AK52
Type:	Pistol Style	Lever
Delivery Pressure:	0.8cm ³	0.9cm ³
Delivery per Stroke:	5000psi	10000psi
Optional 300mm Flexible Delivery Hose:	n/a	GGHE300



E SA40
Air Operated Pistol Type Grease Gun

Die-cast head and body with chromed steel grease tube. Includes rigid delivery tube and 4-jaw coupler. Trigger operated single pulse gun with 3-way fill and air-bleed valve. Accepts 400g grease cartridges, bulk or manual fill.

Operating Pressure:	30-150psi
Delivery Pressure:	1200-6000psi
Inlet Size:	1/4" BSP
Optional 300mm Flexible Delivery Hose:	GGHE300



F SA401
Air Operated Continuous Flow Pistol Type Grease Gun

Die-cast head and body with chromed steel grease tube. Includes rigid delivery tube and 4-jaw coupler. Trigger operated continuous flow gun with 3-way fill and air-bleed valve. Accepts 400g grease cartridges, bulk or manual fill.

Operating Pressure:	60-150psi
Delivery Pressure:	1200-5000psi
Inlet Size:	1/4" BSP
Optional 300mm Flexible Delivery Hose:	GGHE300



A

12.5kg

**EXTRA
HEAVY
DUTY**

(Grease bucket not included)

A AK455
12.5kg Extra-Heavy-Duty Bucket Greaser with Follower Plate

Solid steel pump and carry handle. Supplied with follower plate to prevent cavitation and ensure smooth flow of grease. Suitable for repetitive filling of high pressure low volume grease. Suitable for 12.5kg grease buckets. Includes rigid extension and 4-jaw coupler.

Delivery Pressure:	3500-6000psi
Delivery per Stroke:	1.5cm ³
Hose Length:	1.2m



A



B

12.5kg

High Volume

**EXTRA
HEAVY
DUTY**

(Grease bucket not included)

B AK456
12.5kg Extra-Heavy-Duty Chassis Lube Filler Pump

Zinc die-cast pump head with solid steel pump. High volume, low pressure output for filling auto chassis lubrication reservoirs. Central lube coupling supplied with spare plug-in adaptor.

Delivery Pressure:	900psi
Delivery per Stroke:	33cm ³
Hose Length:	1.5m

C-D SEE BELOW
Air Operated Grease Pumps

Both grease pumps fitted with high efficiency 50:1 air motor. Workshop tested reliability. Supplied with safety regulator to prevent over pressurisation of pump unit. Fitted with a follower plate to prevent pump units cavitation and ensure a smooth flow of grease. Includes SAE100R2AT rated grease hose, z-swivel, control valve and bucket trolley.

	C	D
Model No:	AK452X	AK453X
Capacity:	12.5kg	50kg
Maximum Air Pressure:	150psi	150psi
Recommended Air Pressure:	115psi	115psi
Delivery Pressure:	5000psi	5000psi
Grease Delivery:	1100g/min	1100g/min
Air Consumption:	6cfm	6cfm



C

12.5kg

AIR Operated

(Grease bucket not included)



D

50kg

AIR Operated

(Grease bucket not included)



E

F

E-F SEE BELOW
Air Grease Kit Replacement Parts

Model No:	Description:
E AK453X.V3-06	Grease Control Valve with Z-Swivel
F AK453X.V3-08	Z-Swivel Connector

A NEW

8V



Lithium RECHARGEABLE



B NEW

8V

B CPG8VBP
8V 2Ah Lithium-ion Battery for CPG8V

8V 2Ah Lithium-ion Battery pack for Model No. CPG8V 8V Cordless Grease Gun.



A CPG8V
8V Cordless Grease Gun

Lightweight versatile cordless grease gun, producing 3000psi. Ideal for on site jobs where space is at a premium. Suitable for 85g/3oz and 400g/14oz cartridges. Supplied with 330mm flexi and 175mm rigid delivery nozzles, 85g and 400g cartridge, a 400g cartridge adaptor and 2Ah 8V battery and mains charger.

Battery:	8V 2Ah Lithium-ion
Pressure:	3000psi
Hose Length:	Rigid Hose; 175mm, Flexible Hose; 330mm
Replacement Battery:	CPG8VBP - 8V 2Ah Lithium-ion

C & D



Model No's CPG12V & CPG18V are supplied in storage case.

E 12V

E CPG12VBP
12V 2Ah Lithium-ion Battery for CPG12V

12V 2Ah Lithium-ion Battery pack for Model No. CPG12V 12V Cordless Grease Gun.



F 18V

F CPG18VBP
18V 2Ah Lithium-ion Battery for CPG18V

18V 2Ah Lithium-ion Battery pack for Model No. CPG18V 18V Cordless Grease Gun.



D

18V



C

12V



C-D SEE BELOW
Cordless Grease Guns

High power, professional, cordless grease guns. Ideal for in-field lubrication where power and speed are required. Suitable for 400g cartridges, manual or bulk filling. Features LCD battery condition indicator, air bleed and heavy-duty aluminium pressure heads. Supplied with battery and mains charger in storage case.

	C	D
Model No:	CPG12V	CPG18V
Battery:	12V 2Ah Lithium-ion	18V 2Ah Lithium-ion
Pressure:	6000psi	8000psi
Flow Rate:	80g/min	100g/min
Hose Length:	680mm	700mm
Replacement Battery:	CPG12VBP	CPG18VBP
In-Car Power Adaptor:	CPG12V.V2-ICA	-



A NEW



**SV20
SERIES**

A-C SEE RIGHT

20V SV20 Series Cordless Grease Gun

High power, professional, cordless grease gun, developing 8000psi. Ideal for in-field lubrication where power and speed are required. Suitable for screw-type and standard 400g cartridges, manual or bulk filling. Features LCD battery condition indicator, air bleed and heavy-duty aluminium pressure head.

Flow Rate:	100g/min
Pressure:	8000psi
Hose Length:	700mm
Body Only Weight:	2.4kg

B NEW



+ BATTERY (2Ah)
+ BATTERY CHARGER
+ STORAGE BAG

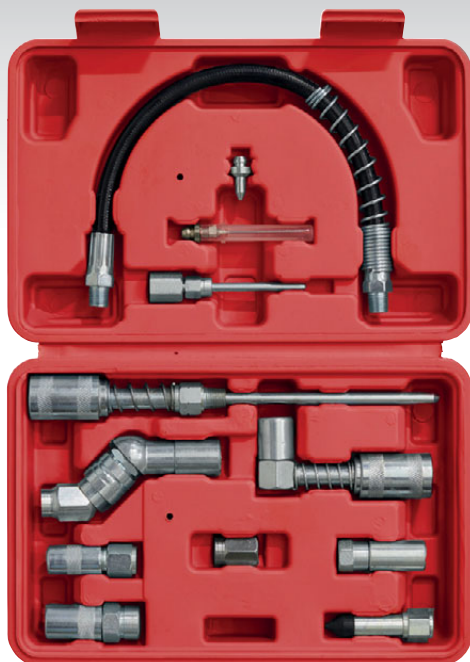
C NEW



+ BATTERY (2Ah)
+ BATTERY (4Ah)
+ BATTERY CHARGER
+ STORAGE BAG

Model No:	Type:	Contents:
A CP20VGRG	Body Only	Grease Gun
B CP20VGRGKIT1	Kit	CP20VGRG - Grease Gun CP20VBP2 - 2Ah Battery CP20VMC - Battery Charger CP1200CB - Canvas Storage Bag
C CP20VGRGKIT	Kit	CP20VGRG - Grease Gun CP20VBP2 - 2Ah Battery CP20VBP4 - 4Ah Battery CP20VMC - Battery Charger CP1200CB - Canvas Storage Bag

D



D AK4482

12pc Grease Gun Adaptor Kit

All-in-one set includes couplers, nozzles, adaptors and flexible hose. For use with all brands of manual grease guns. Ideal for automotive, agricultural, industrial and marine use. Supplied in storage case.

Contents:	300mm Flexible Hose with Spring, Needle Tip Adaptor, Grease Injection Needle, Grease Needle Nozzle, 90° Connector, 90° Slotted Connector, Rubber Tipped Nozzle, 1/8"NPT Female/Female Connector, Standard Grease Coupler, Heavy-Duty Grease Coupler, 360° Coupler, 100mm Grease Gun Needle Nozzle Adaptor with Small and Large Quick Connectors
-----------	---

E NEW



AIR Operated

HEAVY DUTY

E AK46KIT
Manual/Air Grease Gun Kit

Comprehensive manual/air grease gun kit. Features continuous flow air grease gun and lever type manual grease gun. Supplied with heavy-duty grease canister. Air grease gun features 360° rotating head to help access hard-to-reach greasing points. Kit can be used with both bulk fill and cartridge grease and is ideal for site work where an air supply is not always available. Supplied with both rigid and flexible spouts and a spare air grease gun coupler and quick connection coupler.

Air Feed Operating Pressure:	30-150psi
Air Feed Delivery Pressure:	2500-4000psi
Inlet Size:	1/4" BSP
Manual Feed Delivery Pressure:	3500-6000psi
Manual Delivery Per Stroke:	0.7cm ³

A

**A SEE BELOW****Flexible Rubber Delivery Hoses 1/8\"BSP**

Flexible rubber hoses for grease guns. Not to be used on air operated grease guns.

Model No:	Length:	Thread Size:
GGH300	300mm	1/8\"BSP
GGH450	450mm	1/8\"BSP

B

**B SEE BELOW****Flexible Rubber Grease Gun Delivery Hoses with 4-Jaw Connector**

Flexible rubber hoses for manual grease guns. Not to be used on air operated grease guns. Supplied with 4-jaw grease gun end.

Model No:	Length:	Thread Size:
GGHE300	300mm	1/8\"BSP
GGHE450	450mm	1/8\"BSP

C

**C SEE BELOW****Flexible Rubber Delivery Hoses with 4-Jaw Connector & Quick Release Coupling**

Flexible rubber snap-on extensions with end hose. Supplied with 4-jaw grease gun end.

Model No:	Length:	Thread Size:
GGSF300	300mm	1/8\"BSP
GGSF450	450mm	1/8\"BSP

D

**D SCS109****500g Copper Grease Tin**

Anti-seize copper grease, protects against rust, oxidation and other corrosion.

Size: 500g

E

**E SCS110****500g Red Rubber Grease Tin**

Lubricating red rubber grease, ideal for use on brake assemblies. Also compatible with nitrile O-rings and seals.

Size: 500g

F

**F SCS102****500g Clear Silicone Grease Tin**

Clear silicone grease for use on UPVC push-fit soil and waste drainage and insulation of electrical terminals.

Size: 500g

G

**G SEE BELOW****400g Screw-Type EP2 Lithium Grease Cartridge**

Screw-type multipurpose EP2 Lithium grease cartridge suitable for use with Model No's AK4403, AK52 and AK53 Grease Guns, see page 642. Lithium grease ideal for a wide range of lubrication applications. Cartridge screws directly into grease gun head making it quicker and cleaner than standard cartridges.

Size:	400g
Thread Size:	M33 x 2.5mm
Model No:	Pack Quantity:
SCS107	1
SCS108	12

H

**H SEE BELOW****400g EP2 Lithium Grease Cartridge**

Multipurpose EP2 Lithium grease cartridge suitable for use with all plunger type grease guns. Ideal for a wide range of applications.

Model No:	Pack Quantity:
SGC1	1
SGC12	12

I

**I SCS106****400g EP2 Lithium Complex Grease Cartridge**

High quality EP2 Lithium complex grease cartridge. Suitable for applications involving extreme pressure or changes in temperature.

Size: 400g



A AK45

Quick Connect Grease Coupler

Manufactured with heat treated steel designed to withstand high pressures without deformation. Fitted with 1/8"BSPT female thread which enables this coupler to be used with multiple pieces of grease equipment, including manual grease guns, air grease guns, electric grease guns and bulk bucket greasers. Ingenious design enables this coupler to firmly latch onto the grease fitting enabling hands-free operation compared to standard grease couplers, meaning less wasted grease around the fitting. Fitted with a quick connect/disconnect lever which enables unit to be disconnected easily with up to 8000psi of pressure. Eliminates the issue of disconnecting a standard coupler from a pressurised condition, which often leads to broken fittings and damaged coupler jaws.

Maximum Pressure:	8000psi
Inlet Thread:	1/8"BSPT



C SEE BELOW

4-Jaw Heavy-Duty Hydraulic Connectors

4-Jaw heavy-duty hydraulic connectors with 1/8" BSP thread.

Model No:	Thread Size:	Pack Qty:
GGE1	1/8" BSP	1
GGE5	1/8" BSP	5



F SEE BELOW

Straight Grease Nipples - Packs of 25

Straight grease nipples with Imperial/Metric threads.

Model No:	Thread Size:	Thread Type:	Pack Qty:
GNI16	1/4" BSP	Imperial	25
GNI17	1/4" UNF	Imperial	25
GNI18	1/8" BSP	Imperial	25
GNI19	10 x 1mm	Metric	25
GNI20	6 x 1mm	Metric	25
GNI21	8 x 1mm	Metric	25
GNI22	8 x 1.25mm	Metric	25



D AB008GN

115pc Grease Nipple Assortment

Contents (Approximate Quantity):	
Straight;	M6 x 1mm (x10), M8 x 1mm (x10), M8 x 1.25mm (x10), M10 x 1mm (x10)
45° Angle;	M6 x 1mm (x10), M8 x 1mm (x5), M8 x 1.25mm (x10), M10 x 1mm (x10)
90° Angle;	M6 x 1mm (x10), M8 x 1mm (x10), M8 x 1.25mm (x10), M10 x 1mm (x10)



G SEE BELOW

45° Grease Nipples - Packs of 25

Angled grease nipples with Imperial/Metric threads.

Model No:	Thread Size:	Thread Type:	Pack Qty:
GNI10	1/4" UNF	Imperial	25
GNI11	1/8" BSP	Imperial	25
GNI12	1/4" BSP	Imperial	25
GNI13	10 x 1mm	Metric	25
GNI14	8 x 1mm	Metric	25
GNI15	8 x 1.25mm	Metric	25
GNI16	6 x 1mm	Metric	25



B AK447

Needle Nose Grease Dispenser

For use with all brands of manual grease gun (not for use with power greasers). Dispenses a fine bead of grease. Long nozzle provides access for hard-to-reach areas. Ideal for lubricating constant velocity joints.

Length:	170mm
----------------	-------



E AB009GN

130pc Grease Nipple Assortment - Metric, BSP & UNF

Contents (Approximate Quantity):	
Straight Metric;	M6 x 1mm (x22), M8 x 1mm (x10), M10 x 1mm (x10)
Straight Imperial;	1/4" BSP (x10), 1/4" UNF (x10), 1/8" BSP (x10)
45° Angle Metric;	M6 x 1mm (x10), M8 x 1mm (x10), M10 x 1mm (x10)
45° Angle Imperial;	1/4" UNF (x10), 1/4" BSP (x8), 1/8" BSP Gas (x10)



H SEE BELOW

90° Grease Nipples - Packs of 25

Angled grease nipples with Imperial/Metric threads.

Model No:	Thread Size:	Thread Type:	Pack Qty:
GNI13	1/4" BSP	Imperial	25
GNI14	1/4" UNF	Imperial	25
GNI15	1/8" BSP	Imperial	25
GNI16	10 x 1mm	Metric	25
GNI17	8 x 1mm	Metric	25
GNI18	8 x 1.25mm	Metric	25

VACUUM OIL & FLUID EXTRACTOR FEATURES

Manual Pump

Manually pump the handle to start the extraction of oil/fluid.

Air & Manual Pump

Connect an air line or manually pump the handle to start the extraction of oil/fluid.

Vacuum Discharge

Control valve allows selection between extraction or discharge of oil/fluid.



A-G SEE BELOW

Vacuum Oil & Fluid Extractors

Vacuum Oil and Fluid extractors assist in removing used oil and fluids from a vehicle. They are designed in general to remove used engine oil via the dipstick tube or oil service pipe in newer vehicles, thus avoiding the need to remove engine sump plugs and remove oil by gravity into an oil drainer. By using a vacuum extractor this avoids a lot of mess and the need to elevate the vehicle to gain access to the sump plug. After inserting the suction probe into the dipstick tube, the extractor creates a vacuum, either by pumping manually or by the aid of an air compressor on certain models. Once a vacuum has been created the used oil is sucked up into the extractor's container. Choosing the right extractor will depend on the intended use, such as reservoir size required, probe sizes and accessories or the use of manual, air or electricity.

Model No:	Capacity:	Extraction:	Discharge:	Accessories Supplied:	Additional Features:
A TP696	5.5L	Manual Pump	Manual	Suction Probe: 2100mm	5.5L small design, making it easy to use in confined spaces. Easy-pour spout and cover cap. Uses a probe to remove engine oil through the dipstick tube.
B S01169	6.5L	Manual Pump	Manual	Suction Probes; Ø4 x 1000mm, Ø6 x 1000mm, Ø8 x 1000mm, Extension Tube: Ø10 x 1000mm	Foot rest for stability while using. Carrying handle. Maximum 90° angle for emptying. Uses probes to drain engine oil through the dipstick tube.
C TP69	6.5L	Manual Pump	Manual	Suction Probes; Ø5.8 x 850, Ø6.7 x 850mm, Extension Tube: Ø9.8 x 1000mm	Sturdy rubber base. Internal float valve for automatic cut-off when unit has reached maximum capacity. Uses probes to drain engine oil through the dipstick tube. Unit can be tipped 90° for easier emptying.
D S01167	9L	Manual Pump	Manual	Suction Probes; Ø4 x 1000, Ø6 x 1000, Ø8 x 1000, Ø10 x 1000mm, Extension Tube: Brass Ø4 x 600mm	Sturdy rubber base. Rigid brass extension tube. Uses probes to extract engine oil through the dipstick tube.
E TP6901	9L	Manual Pump	Manual	Suction Probes; Ø6 x 1100, Ø10 x 1100mm, Extension Tube: Ø8 x 1100mm. Brake/clutch bleeding hose	Uses manual pump to generate vacuum. Also comes with brake/clutch bleeding hose.
F S01168	9L	Manual & Air Operated Pump	Manual	Suction Probes; Ø4 x 1000, Ø6 x 1000, Ø8 x 1000mm & 1200mm Brake Bleed Hose, Extension Tube: Ø10 x 1000mm	Uses manual pump or compressed air for fluid extraction. Uses probes to extract engine oil through the dipstick tube. Also comes with 1200mm brake bleeding hose.
G TP6904	9L	Manual & Air Operated Pump	Manual	Suction Probes; Ø6 x 1100, Ø10 x 1100mm, Extension Tube: Ø8 x 1100mm	Uses manual pump or compressed air supply to generate vacuum. Uses probes to extract engine oil through the dipstick tube. Also comes with brake/clutch bleeding hose.

A

18L

Manual Pump



A



B

6L

Manual Pump

Vacuum Discharge



C

18L

Manual Pump

Vacuum Discharge



A TP6908

18L Manual Vacuum Oil & Fluid Extractor

Constructed from composite materials. Uses manual pump to generate vacuum. Suitable for the extraction of all types of engine, transmission and lubricating oil from cars, motorcycles, marine engines, stationary engines and industrial machinery. Also suitable for low viscosity fluids such as water. Supplied with Ø5.8 and Ø6.7mm suction probes and Ø9.8mm extension tube. Uses probes to extract engine oil through the dipstick tube. Unit can be tipped past 90° for easier emptying. Fitted with three castor wheels enabling easy manoeuvrability when the unit is full.

B-C SEE BELOW

Vacuum Oil & Fluid Extractors

Assist in removing used oil and fluids from a vehicle. They are designed in general to remove used engine oil via the dipstick tube or oil service pipe in newer vehicles, avoiding the need to remove engine sump plugs and remove oil by gravity into an oil drainer. By using a vacuum extractor this avoids a lot of mess and the need to elevate the vehicle to gain access to the sump plug. After inserting the suction probe into the dipstick tube, the extractor creates a vacuum, either by pumping manually or by the aid of an air compressor on certain models. Once a vacuum has been created the used oil is sucked up into the extractors container. Choosing the right extractor will depend on the intended use such as reservoir size required, probe sizes and accessories or the use of manual, air or electricity.

Warning: All products on pages 648-649 should not be used with petrol.

Model No:	Capacity:	Extraction:	Discharge:	Accessories Supplied:	Additional Features:
A TP6908	18L	Manual Pump	Manual	Suction Probes; Ø5.8 x 870, Ø6.7 x 870mm, Extension Tube; Ø9.8 x 1010mm	Large 18L Capacity. 3 Wheels with the ability to lock in place and pull along handle for ease of movement, especially when full. Unit can be tipped past 90° for easier emptying. Uses probes to extract engine oil through the dipstick tube.
B TP6905	6L	Manual Pump	Vacuum Pump	Suction Probes; Ø5.8 x 870, Ø6.7 x 870mm, Extension Tube; Ø9.8 x 1010mm	Features a controlled discharge function for emptying the unit. Uses probes to drain engine oil through the dipstick tube.
C TP6906	18L	Manual Pump	Vacuum Pump	Suction Probes; Ø5.8 x 870, Ø6.7 x 870mm, Extension Tube; Ø9.8 x 1010mm	Large 18L Capacity. 3 Wheels for ease of movement, especially when full. Carrying handle. Pressure gauge. Features a controlled discharge function for emptying the unit. Uses probes to drain engine oil through the dipstick tube.
D AK466D	12L	Electric Pump	Manual	Rigid Probes; 1x Ø8mm x 650mm, 1x Ø5mm x 650mm, Semi-Rigid Probes; 1x Ø6mm x 800mm, 1x Ø8mm x 800mm and 1x Probe suitable for VW Golf	2 Wheels. Metal frame with handle for ease of movement, especially when full. 500w electric motor. Rigid brass extension tubes. 13A plug. Pressure gauge.

D

12L

230V

Manual Discharge



D AK466D

12L Oil Extractor

Mobile oil drainer designed to extract oil via the dipstick tube. 12L Capacity tank allows easy collection and safe disposal of waste oil. Fitted with wheels for manoeuvring around the workshop with ease, even when full. Designed for use in small workshops where clean, spill-free oil removal from vehicles is required. No need to lift the vehicle or to remove the sump plug. Probes insert into the dipstick port, allowing the oil to be sucked from the engine sump. Suction hose of 1.7m fitted before the probes are attached and integrated suction gauge to monitor the pump. Supplied with 1x Ø8mm x 650mm rigid probe, 1x Ø5mm x 650mm rigid probe, 1x Ø6mm x 800mm semi-rigid probe, 1x Ø8mm x 800mm semi-rigid probe, and 1x probe suitable for VW Golf. Also suitable for Mercedes.

Supply/Plug Type:	230V/3-Pin
Power Supply Cable Length:	4.5m
Motor Power:	500W



A AK36D

36L Mobile Oil Drainer - Manual Discharge

Polyethylene reservoir, 36L capacity, mounted on four castors for mobility. Drain pan, with filter, on height-adjustable down tube. Handgrips for manual emptying.

Capacity:	36L
Minimum Height to Pan:	760mm
Maximum Height to Pan:	1600mm
Gravity Feed:	✓
Suction Probe:	✗
Gravity Discharge:	✗
Air Discharge:	✗
Pump Discharge:	✗

A

36L

Manual Discharge



B

80L

Gravity Discharge



B AK80D

80L Mobile Oil Drainer - Gravity Discharge

Polyethylene reservoir, 80L capacity, mounted on four castors for mobility. Drain pan, with filter, on height-adjustable down tube. Use rotary pump or gravity drain tap for emptying.

Capacity:	80L
Minimum Height to Pan:	940mm
Maximum Height to Pan:	1800mm
Gravity Feed:	✓
Suction Probe:	✗
Gravity Discharge:	✓
Air Discharge:	✗
Pump Discharge:	✗

C

75L

Air Discharge



D



C AK450DX

75L Pump-Away Mobile Oil Drainer

75L Reservoir and telescopic funnel fitted with grid filter. Fitted with female dry-fit coupling for connection to Model No. AK450DP Pump-Away Station. Includes full drum indicator.

Capacity:	75L
Minimum Height to Pan:	890mm
Maximum Height to Pan:	1620mm
Gravity Feed:	✓
Suction Probe:	✗
Gravity Discharge:	✗
Air Discharge:	✓
Pump Discharge:	✗

D AK450DP

Air Powered Pump-Away Station

Air operated 1:1 oil pump, suitable for use with Model No's AK450DX and AK468DX oil drain units. Supplied with a wall mounting bracket, 2m flexible hose with dry-fit male and female quick couplings to attach it to the drain unit. 2m Flexible air supply hose with filter, lubricator and regulator assembly is also included. The pump can be connected into a run of pipework to a waste oil storage point sited out of the workshop.

Minimum/Maximum Air Pressure:	30/120psi
Air Consumption:	8.8cfm
Oil Delivery @ 90psi:	60L/min

IMPORTANT
Model No. AK450DX cannot be used unless a pump-away station is purchased. One pump unit can only be used to empty one drainer at a time, although the time taken to empty the reservoir is short. It is usual for operators to purchase one pump-away station and several oil drainers. Model No. AK450DP is supplied with its own filter, regulator and lubricator to ensure trouble-free operation.

E

E AK659

6pc Double End Drain Key Set

For full details, see page 512.



AIR DISCHARGE
The drainer uses a blanket of air to squeeze the oil out of the reservoir. These units are not suitable for connection to a closed system and are not covered by regulations requiring regular pressure testing.

PROBE SUCTION
These units are supplied with a variety of suction probes which can be used to extract warm oil from the sump through the dipstick tube.

AIR DISCHARGE
Model No. AK450DX is fitted with a Dry-Fit Coupling. In order to discharge the drainers they must be connected to a pump-away station which is sold separately. See Model No. AK450DP.



A

35L

Air Discharge
Adjustable Height

A AK456DX
35L Air Discharge Mobile Oil Drainer with Probes

Steel fabricated 35L reservoir. Height-adjustable steel drain pan, fitted with grid filter. Features gravity feed reservoir with air discharge hose. Includes quick release oil dipstick probes, powered by venturi suction pump. Fitted with heavy-duty wheels and castors for easy mobility.



B

65L

Air Discharge
Adjustable Height

B AK451DX
65L Air Discharge Mobile Waste Oil Drainer

Steel fabricated 65L reservoir and telescopic steel drain pan fitted with grid filter. Air discharge drain with hose. Fitted with reservoir oil level indicator tube.



C

80L

Air Discharge
Adjustable Height

C AK462DX
80L Cantilever Air Discharge Mobile Oil Drainer with Probes

Steel fabricated 80L reservoir with suction probes and air discharge. Unit features cantilever oil drain pan which is suitable for use either under a lift or on the forecourt. Drain pan utilises vacuum suction when in the down position and is fitted with a bogey wheel for easy manoeuvring. Fitted with oil level indicator tube and supplied with Mercedes adaptor plus a selection of probes.



D

90L

Air Discharge
Adjustable Height

D AK459DX
90L Air Discharge Mobile Oil Drainer with Probes

Steel fabricated 90L reservoir. Height-adjustable steel drain pan, fitted with grid filter. Gravity feed reservoir with air discharge hose. Includes quick release oil dipstick probes, plus adaptors for BMW and VW, powered by venturi suction pump. Fitted with reservoir oil level indicator tube. Heavy-duty wheels and castors for easy mobility.



E

110L

Air Discharge
Adjustable Height

E AK458DX
110L Air Discharge Mobile Oil Drainer

Steel fabricated 110L reservoir. Height-adjustable steel drain pan, fitted with filter, and gravity feed reservoir with air discharge hose. Fitted with reservoir oil level indicator tube. Heavy-duty wheels and castors for easy mobility.



C

CANTILEVER OIL DRAINER

In lowered position, the AK462DX pan extends 2.2m, making it suitable for forecourt use and utilises suction evacuation of drain pan.

Model No:	Capacity:	Min. Height to Pan:	Max. Height to Pan:	Gravity Feed:	Suction Probe:	Gravity Discharge:	Air Discharge:
A AK456DX	35L	935mm	1420mm	✓	✓	✗	✓
B AK451DX	65L	1070mm	1590mm	✓	✗	✗	✓
C AK462DX	80L	150mm	1600mm	✓	✓	✗	✓
D AK459DX	90L	1300mm	1750mm	✓	✓	✗	✓
E AK458DX	110L	1250mm	1830mm	✓	✗	✗	✓

A-C SEE BELOW

64L Low Level Oil Drainers

Low level drainers suitable for use on the forecourt and workshop floor. Steel and high-impact polypropylene fabricated units with a capacity of 64L. Model No. AK467D fitted with gravity drain tap for manual discharge. Model Numbers AK467DXP and AK468DXP fitted with rotary pump and hose for faster discharge. Fully portable with two castors, two fixed wheels and handle for manoeuvring around the workshop.



	A	B	C
Model No:	AK467D	AK467DXP	AK468DXP
Capacity:	64L	64L	64L
Maximum Height to Pan:	285mm	285mm	250mm
Gravity Feed:	✓	✓	✓
Suction Probe:	✗	✗	✗
Gravity Discharge:	✓	✓	✓
Air Discharge:	✗	✗	✗
Pump Discharge:	✗	✓	✓



D DRP44
15L Oil/Fluid Drain Pan & Recycling Container - Wheeled

High density polyethylene drain pan for recycling of used oil. Closed design for safe spill-free disposal. No mess to clean up on top or sides. Stores upright or flat without leakage.

Size (W x D x H): 457 x 406 x 127mm



E DRP19
Drum Drain Pan

Manufactured from hard-wearing polycarbonate material preventing corrosion. Fits to top of drum for draining unused oil back into drum. Features built-in filter grid and lipped edge for easy handling.

Diameter: Ø600mm
Height: 150mm

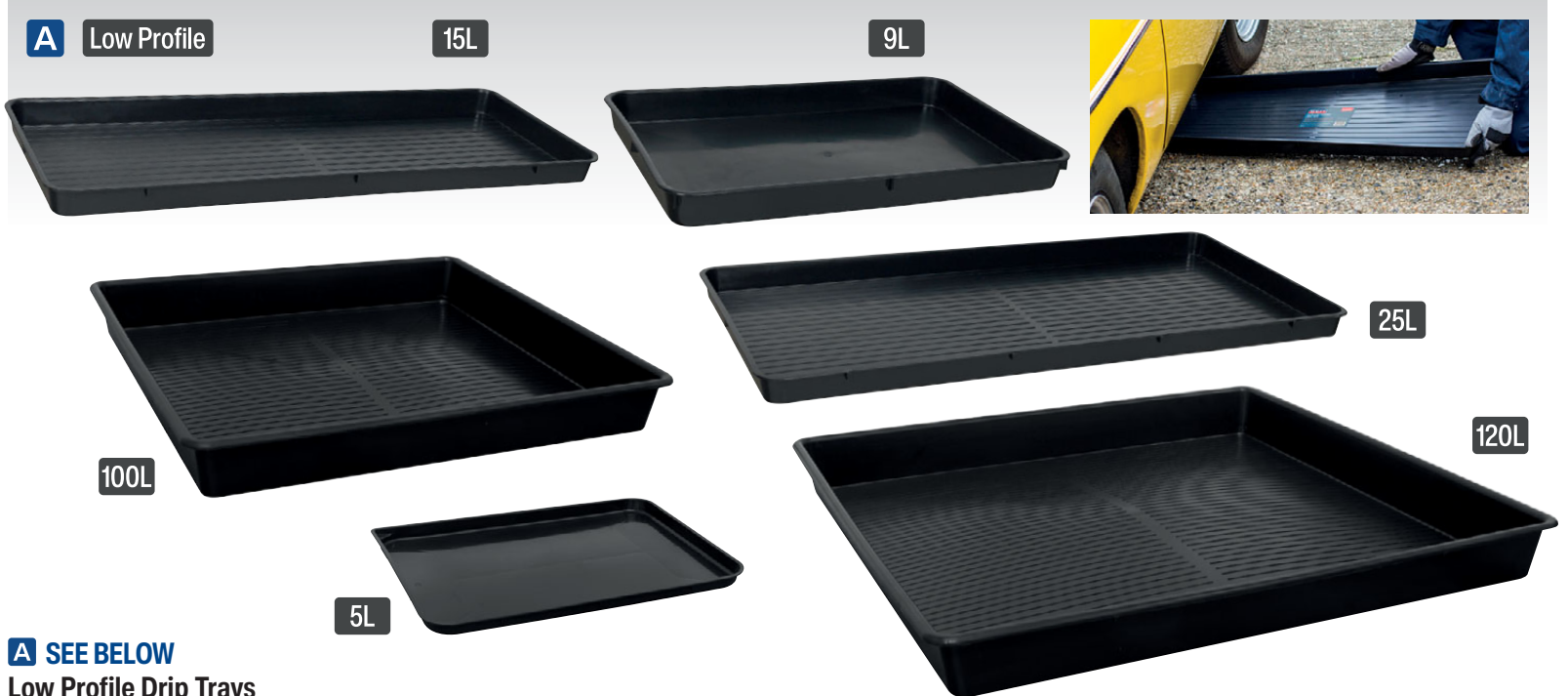


F AK449D
Waste Oil Drain Collector

Mobile waste oil drainer for use with 25L or other suitable containers. Telescopic drain pan with filter grid and ball valve control. Arm fully adjustable in height and depth and fitted with locking nuts for pre-determined height selection. Heavy-duty design trolley with handle, two castors and two fixed wheels.

Minimum Height to Pan: 1090mm
Maximum Height to Pan: 1740mm

WASTE OIL DISPOSAL
Waste oil is classed as a hazardous waste and therefore must be handled and disposed of according to local government guidelines.



A SEE BELOW

Low Profile Drip Trays

Low profile drip trays manufactured from hard-wearing recycled polypropylene. These have a broad appeal to both the classic car user and general mechanic. Purpose-made for the recovery of oil and fluids, these drip trays can be left under most vehicles due to the low profile design. Ideal for use over prolonged periods of time, catching any drips that may occur whilst in storage or in the workshop. Model No's DRPL15, DRPL25, DRPL100 and DRPL120 are extra-long in order to cover drips from both engine and gearbox.

Model No:	DRPL05	DRPL09	DRPL15	DRPL25	DRPL100	DRPL120
Size (W x D x H):	630 x 475 x 30mm	570 x 390 x 50mm	1000 x 400 x 50mm	1100 x 550 x 50mm	1000 x 1000 x 120mm	1200 x 1200 x 120mm
Capacity:	5L	9L	15L	25L	100L	120L



B DRP09

54L Wheeled Oil/Fluid Drain & Recycling Container

Ensures safe and clean collection, transportation and temporary storage of waste oil. Features heavy-duty construction with wheeled undercarriage for easier transportation of full drainer. Includes four integral oil filter drain positions. Stores flat or in upright position.

Capacity:	54L
Size (W x D x H):	915 x 660 x 240mm



C 30L Low Profile

DRP011

30L Low Profile Oil/Fluid Drainer

Low profile design is ideal for the professional mechanic and DIY user. Ensures safe and clean collection, transportation and temporary storage of waste fluids. Four castors provide easy manoeuvrability. Includes grid to aid draining of filters and to prevent debris entering the tank.

Capacity:	30L
Size (W x D x H):	850 x 600 x 125mm

A-F SEE BELOW**Oil Drain Pans**

These drain pans have a broad appeal and are suitable for both the DIY user and professional mechanic. Purpose-made for the recovery of oil and antifreeze, these pans help keep the workshop floor free from oily residue and aid return of oil to recycling containers with minimal risk of spills or splashes. They are also suitable for parts cleaning operations with degreasing solvents such as Sealey Model No's AK25 and AK2501, see page 1135. Features include:

- ✓ Made from high-density polyethylene with UV stabiliser.
- ✓ Large handles, featured on Model No's DRP02-DRP04, are positioned to aid carrying and pouring.
- ✓ Heavy wall construction stays rigid, even with hot oil.
- ✓ Resistant to most chemicals and solvents*.
- ✓ Excess capacity helps prevent overflow or spillage.
- ✓ Will not dent or rust and are easy to clean.

*Not suitable for spray gun cleaner.

A 4.5L**A DRP00****4.5L Oil Drain Pan**

Suitable for oil or coolant and large enough for a single oil change on smaller engines. Includes pouring lip, hanging hole and back shelf with protruding stub for draining oil filters.

Diameter:	Ø300mm
Height:	100mm

B 6L**B DRP14****6L Oil/Fluid Drain Pan**

Purpose-made for the recovery of oil and antifreeze. Includes oil pouring lip making it easy to dispose of oil/fluids.

Diameter:	Ø340mm
Height:	90mm

C 8L**C DRP01****8L Oil/Fluid Drain Pan**

Large enough for a single oil change. Includes pouring lip, hanging hole and back shelf with protruding stub for draining oil filters.

Diameter:	Ø365mm
Height:	100mm



Features spill-proof lip to aid carrying and pouring.



DRP02, DRP03 and DRP04 have an enclosed pouring spout to reduce spills and splashes.



DRP02, DRP03 and DRP04 feature large handles for left or right-handed use.



All drain pans are made from impact resistant high-density polyethylene material.



DRP19 fits to top of drum for draining unused oil back into drum. See page 652.

D 7.6L**D DRP02****7.6L Oil/Fluid Drain Pan**

Features anti-splash lip that contains fluid when carrying or pouring. Large handles and enclosed pouring spout makes easy work of returning oil/liquid to recycling container.

Diameter:	Ø390mm
Height:	120mm

E 17L**E DRP03****17L Oil/Fluid Drain Pan**

Suitable for multiple oil changes. Features anti-splash lip that contains fluid when carrying or pouring. Large handles and enclosed pouring spout makes easy work of returning oil/liquid to recycling container.

Diameter:	Ø460mm
Height:	150mm

F 17L**F DRP04****17L Antifreeze/Fluid Drain Pan**

Colour-coded version of Model No. DRP03 helps keep different fluids isolated and reduces cross contamination.

Diameter:	Ø460mm
Height:	150mm



A SEE BELOW

Oil/Fluid Drain & Recycle Containers

Purpose-made for the recovery of oil and antifreeze, these pans help keep the workshop floor free from oily residue and aid return of oil to recycling containers with minimal risk of spills or splashes. Made from high-density Polyethylene with UV stabiliser. Heavy wall construction stays rigid, even with hot oil. Excess capacity helps prevent overflow or spillage. Resistant to most chemicals and solvents. Will not dent or rust and are easy to clean. Includes drain vent to aid smooth flow of oil.

Model No:	DRP06	DRP07
Capacity:	5L	10L
Size (W x D x H):	440 x 290 x 135mm	570 x 320 x 125mm



B DRP05

16L Oil/Fluid Drain & Recycle Container

Convenient for the safe, clean collection and temporary storage and carriage of waste oil. Integral oil filter drain position. Suitable for multiple oil changes. Includes drain vent to aid smooth flow of oil.

Capacity:	16L
Diameter:	Ø460mm
Height:	180mm



D SEE BELOW

Not only suitable for oil changes only, these zinc plated pans are ideal for cleaning and storing vehicle components. May also be used as drip trays under vehicles.

Model No:	DRPM1	DRPM2	DRPM3	DRPM4
Capacity:	9L	12L	16L	20L
Size (W x D x H):	432 x 331 x 89mm	489 x 371 x 91mm	432 x 331 x 143mm	489 x 371 x 153mm



C DRPH12

12L Plastic Drain Pan

Lightweight drain pan made of hard-wearing polypropylene. Purpose-made for the recovery of oil and fluids. Ideal for cleaning and storing vehicle components or used to catch any drips that may occur over a long period of time whilst in storage or in the workshop.

Capacity:	12L
Size (W x D x H):	450 x 350 x 90mm



**A TP6806****AdBlue® Lift Action Pump**

Heavy-duty polypropylene construction lift pump. Manufactured with polyethylene parts suitable for transferring AdBlue®. Fitted with 2" Mauser and 2" BSP adaptor for use with 205L drums. Supplied with 1.36m discharge hose. Delivers approximately 250ml per stroke.

**B TP57****AdBlue® Heavy-Duty Rotary Pump**

Polypropylene rotary pump, specially fitted with Bakelite vanes for transferring AdBlue® as well as acids, alkalis, oils and other fluids of similar viscosity. Supplied with 1300mm polyethylene extension hose. Features 2" BSP connector suitable for use on 205L drums. Delivers approximately 0.35L/revolution.

**C TP6607****AdBlue® Heavy-Duty Lever Action Pump**

Self-priming lever pump fitted with anti-drip nozzle, 2" BSP connector and dip tube to suit 100 or 205L drums. Added filter in pump to prevent any unwanted large particles getting into fluid system. Specially constructed with Viton® seals for transferring AdBlue®. 1" x 2m Hose for hands-free applications. Approximately 330ml per stroke discharge.

**D TP6809****AdBlue® Lever Action Pump**

Lever action pump specifically for use with AdBlue®. The dip tube extends from 350mm to 980mm to fit 100L to 205L drums or barrels, or 1000L IBC tank. Specially constructed with Viton® seals for transferring AdBlue®. 1.6m Delivery hose for hands-free applications. Approximately 500ml per stroke discharge. Can also be used with water, antifreeze, windscreen washer fluid or mild detergents.

**E-F SEE BELOW****AdBlue® Filling Funnel**

Specially designed AdBlue® funnels screws directly onto filler neck alleviating risk of spills. Units are fitted with a manual internal valve which, when opened, allows fluid to pass through. Large capacity of 1.1L and fitted with a click close lid to keep dirt and debris out when not in use.

Model No:	Spout Type:
E ADB07A	Angled
F ADB07S	Straight

**G ADB02****AdBlue® Digital Flow Meter**

Robust rubber housing with integral digital electronic metering. Easy-to-read large, 4-digit, 28mm high LCD display calibrated in litres. Features flow rate indication. 1" x 1" BSP Male/Female fittings. Suitable for use with AdBlue®. Powered by 2 x AAA batteries (supplied). IP55 Rated protection.

Flow Rate:	7-120L/min
Maximum Working Pressure:	145psi

**H-I SEE BELOW****AdBlue® Elbow Connectors**

Elbow connectors for use with AdBlue® delivery systems. Connected by 1" BSP threads at both ends. Made from Polypropylene with Viton® seals.

Model No:	Connection:
H ADB10EC	1" BSP Both Ends
I ADB10EHC	1" BSP Thread and 3/4" Barb

**J ADB01****AdBlue® IBC Connector SEC**

This IBC connector works by screwing the valve open/closed without generating any angular pressure on the IBC connection point. Once connected, the SEC valve ensures that the AdBlue® is not contaminated by the surrounding environment of the IBC tank. Suitable for use with all Sealey AdBlue® pumps.

A

AdBlue®
12V



A TP9912

AdBlue® 12V Portable Transfer Pump

Electric 12V membrane pump specifically designed for the distribution of AdBlue®. Self-priming unit provides a flow rate of up to 40L/min. Supplied with 4m hose, manual delivery nozzle and 2m cables with battery clamps. All materials and seals used on this pump are suitable for use with AdBlue®.

Voltage:	12V
Speed:	2800rpm
Current:	18A
Power:	260W
Duty Cycle:	30min/hr
Flow Rate:	40L/min

B

AdBlue®
230V



B TP99230

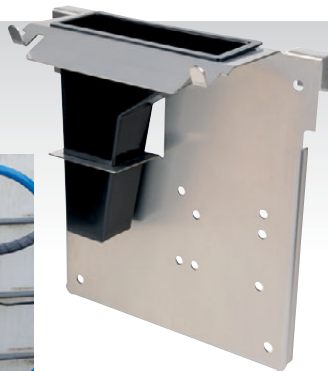
AdBlue® 230V Portable Transfer Pump

Electric 230V membrane pump specifically designed for the distribution of AdBlue®. Self-priming unit provides a flow rate of up to 40L/min. Supplied with 4m hose, manual delivery nozzle and 1.8m cable with 3-pin plug. All materials and seals used on this pump are suitable for use with AdBlue®.

Voltage:	230V
Speed:	2900rpm
Current:	2A
Power:	370W
Duty Cycle:	Continuous
Flow Rate:	40L/min

C

NEW



C ADB08

IBC Pump Mounting Bracket

Hanging bracket and fixings to attach 12V and 230V fluid transfer pumps to 1000L intermediate bulk containers. Supplied with a delivery nozzle holder that can also act as a drip tray to catch any accidental spills. Can be used with most brands of fluid transfer pumps.

D NEW



D ADB09

Drum Pump Mounting Bracket

Bracket and fixings to attach 12V and 230V fluid transfer pumps to 205L barrels. Supplied with a delivery nozzle holder that can also act as a drip tray to catch any accidental spills. Can be used with most brands of fluid transfer pumps.



F

F ADB03

AdBlue® Manual Delivery Nozzle

Polypropylene constructed body and spout for durability. Designed for use with AdBlue®. Supplied with removable 3/4" BSP hose inlet. Suitable for use with AdBlue® pumps. Features a maximum flow rate of 90L/min.

Inlet Size:	3/4" BSP
Maximum Flow Rate:	90L/min

G AdBlue®



HEAVY DUTY

G ADB04

AdBlue® Automatic Delivery Nozzle

Heavy-duty automatic AdBlue® nozzle manufactured from stainless steel. Fitted with micro-touch valve for instant shut-off when tank is full. Fitted with 3/4" BSP hose inlet. Designed and manufactured using AdBlue® compliant materials. Features a maximum flow rate of 60L/min. Suitable for use with AdBlue® pumps.

Inlet Size:	3/4" BSP
Maximum Flow Rate:	60L/min

E

AdBlue®



E DT55BCOMBO1

55L Portable Dispensing Tank with AdBlue® Pump - Blue

Manufactured from hard-wearing and durable polyethylene. 55L Capacity suitable for the distribution of Diesel, Oil, AdBlue®, Water and Antifreeze. Supplied with Model No. TP6607 AdBlue® Lever Pump. Fitted with two roller wheels, hose holder and vent caps. Features a 2" BSP thread and 4-point screw fittings enabling other pumps to be fitted as required. See page 666 for full range.



A TP6807
High Flow Heavy-Duty Rotary Pump for 205L Drum

Heavy-duty cast steel body suitable for use with low viscosity products such as oils, diesel, antifreeze and other non-corrosive fluids. Supplied with 2" BSP adaptor and 3-piece dip tube suitable for use on 205L drums. Delivers approximately 1L/revolution, emptying a 205L drum in 3 minutes.



B TP55
Rotary Pump for 205L Drum

Cast steel body with machined bore and rotor. Suitable for oils, antifreeze, degreasants and other non-corrosive fluids. Supplied with 2" BSP adaptor and suitable for use on 205L drums. Delivers approximately 0.2L/revolution.



C TP54
Rotary Pump for 205L Drum

Cast steel body, suitable for oils, antifreeze, degreasants and other non-corrosive fluids. Supplied with 2" BSP adaptor and is suitable for use on 205L drums. Delivers approximately 0.3L/revolution.



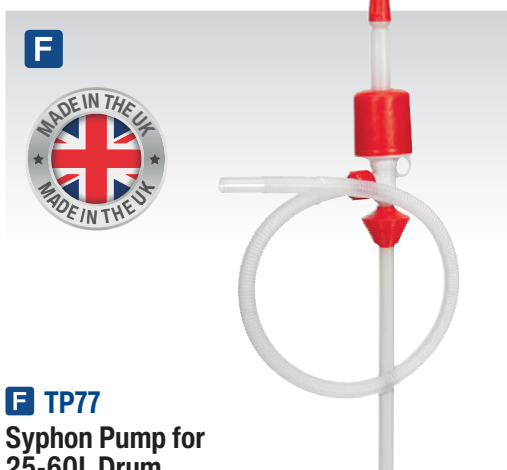
D TP78
Syphon Pump for 60-205L Drum

Composite pump with self-priming feature. Suitable for oils and non-aggressive chemicals. For use on 60-205L drums. Delivers approximately 17L/min.



E TP781
High Flow Syphon Pump for 205L Drum

Easy-to-use polyethylene pump with self-priming feature. Equipped with vent cap to stop discharge and flexible corrugated discharge tube. Suitable for oils and non-aggressive chemicals. For use on 205L drums. Delivers approximately 21L/min.



F TP77
Syphon Pump for 25-60L Drum

Composite pump with self-priming feature. Suitable for oils and non-aggressive chemicals. For use on 25-60L drums. Delivers approximately 8L/min.



G TP6804
1L Multipurpose Mini Pump

Multipurpose pump perfect for topping up difficult to access points on motor vehicles, lawnmowers, chainsaws and other jobs around the workshop and home. 1L capacity suitable for all engine oils, transmission fluids, brake fluids and general-purpose cleaners.



H AK471
Dual Action Transfer Gun

Draws in and pumps out liquid in a single stroke. Easy and safe answer to fluid transfer, especially useful in transferring media unsafe for body contact. Rugged aluminium die-cast head. Steel barrel in premium powder coated finish with heavy duty rubber plunger. Comes with 2.4m of vinyl hose, 1.2m on each valve.



A TP68
Self-Priming Lever Pump

Steel barrelled, self-priming, lever pump. Supplied with 2" BSP adaptor and dip tube suitable for 25 to 205L drums. Suitable for oils, antifreeze, degreasants and other non-corrosive fluids. Delivers approximately 300ml per stroke.



B TP6801
Heavy-Duty High Flow Lever Pump

Steel barrelled, self-priming lever pump. Supplied with 2" BSP adaptor and dip tube suitable for 50 to 205L drums. Suitable for oils, antifreeze, degreasers and other non-corrosive fluids. High flow unit delivers approximately 400ml per stroke. Supplied with two delivery nozzles, one standard swan neck and one acute angle with filter for removing impurities from fluids.



C TP6802
Heavy-Duty Swivel Handle Lever Pump

Heavy-duty steel barrelled, self-priming, lever pump. Supplied with 2" BSP adaptor and dip tube suitable for 25 to 205L drums. Fitted with non-drip spout and swivel handle. Suitable for oils, antifreeze, degreasants and other non-corrosive fluids. Delivers approximately 400ml per stroke.



D TP66
Self-Priming Heavy-Duty Lever Action Pump

Self-priming lever pump fitted with anti-drip nozzle, 2" BSP connector and dip tube to suit 100 or 205L drums. Suitable for oils, antifreeze, paraffin and other non-corrosive fluids. Approximately 330ml per stroke discharge. Optional 1200mm dip tube Model No. TP66/ACC.



E TP80
Battery Operated Jerry Can Pump

Easily transfers fluid from 5, 10 and 20L jerry cans. Compatible for use with diesel and water. Hook storage design allows pump to attach onto fuel can and features a height-adjustable control to accommodate different sized containers. Fitted with auto-stop feature to prevent overfilling. Operated by an electric motor powered by 2 x AA batteries (not included). Not suitable for use with petrol or kerosene.

Hose Length:	700mm
Flow Rate:	9L/min
Battery:	2 x AA (not included)



F TP90
Air Operated Transfer Pump

Polypropylene body with acetal piston and nitrile seals. Self-priming unit with anti-drip shut-off valve. Body is fitted with a 2" BSP adaptor and 915mm dip tube suitable to fit 205L drums. Compatible with most fluids capable of being stored in plastic or metal drums. Not suitable for aggressive chemicals. A compatibility chart is provided. For optional extension hose kit order Model No. TP90HK.

Delivery:	15L/min
Operating Pressure:	30-100psi
Air Consumption:	4.4cfm
Optional Extension Hose Kit:	TP90HK



G TP6803
Lever Action Pump

Polypropylene lever pump with steel rod and dip tube, suitable for use with oils, antifreeze and other non-corrosive fluids. Features polyoxymethylene handle to prevent aggressive fluids melting the handle. Fitted with 360° outlet nozzle. Suitable for 205L drums. Delivers approximately 300ml per stroke.



A


**HEAVY
DUTY**

A TP6805

Lift Action Pump

Heavy-duty steel barrelled, self-priming, lift pump. Supplied with adjustable 2" BSP adaptor and dip tube suitable for 25 to 205L drums. Suitable for oils, antifreeze, degreasants and other non-corrosive fluids. Delivers approximately 0.5L per full stroke.

D NEW

5L

30ml
per stroke

B


**HEAVY
DUTY**

B TP88

Self-Priming Heavy-Duty Displacement Pump

Self-priming, pistonless, displacement pump fitted with non-drip nozzle and 2" BSP adaptor and dip tube. Suitable for oils, antifreeze, degreasants and other non-corrosive fluids. Fitted with nitrile seals. Approximately 250ml delivery per stroke. Accessory kit allows use on most containers and drums from 25-205L.

Optional Accessory Kit: TP88/ACC

D TP5000

5L Container Hand Pump

Hand pump that fits 5L containers with a 38mm screw top. Features quick-fit nozzle. Mess and waste liquid eliminated. Suitable for a wide variety of viscous products, such as engine oil, coolant and detergents etc. Includes a set of three clear hoses; 8, 13.5, 59cm.

E-F



G



H



E-H SEE BELOW

Solvent Safety Funnels

Fitted with hinged lids to comply with solvent handling regulations. Multiple fixing options available, including universal adaptor Model No. SOLV/SFX for drums with integral, pull-out pouring spout.

Model No:	Description:	Fitting:
E SOLV/SF	Safety Funnel	2" Female
F SOLV/SFU	Safety Funnel with Universal Adaptor	n/a
G SOLV/SFX	Universal Adaptor	n/a
H SOLV/SFA	Adaptor	2" Male

F

Model No. SOLV/SFU supplied fitted with Universal Adaptor Model No. SOLV/SFX.



C



C TP89

Self-Priming Piston Pump

Self-priming, piston pump fitted with anti-drip nozzle and 2" BSP adaptor and dip tube. Suitable for oils, antifreeze, degreasants and other non-corrosive fluids. Unit will deliver 200ml per stroke but by using the two sleeves supplied, delivery can be limited to 40, 80 or 140ml per stroke. Will fit most containers and drums from 25-205L.

I

AdBlue®



I SEE BELOW

Thinners Pumps

Manufactured from nylon and polypropylene with PTFE seals and features a stainless steel plunger rod. Ready-to-go self-priming pump makes the unit quick and easy-to-use. Suitable for use with cellulose thinners, antifreeze, AdBlue®, brake cleaner, detergents, mild acids and gun wash. Universal adaptor (Model No. TP99/1) is available for drums fitted with a plastic pouring spout K.

Model No:	Drum Suitability:	Delivery:
TP99	25L	400ml/stroke
TP99/205	205L	400ml/stroke

Universal Drum Closure Adaptor: TP99/1

K



K TP99/1

Universal Drum Closure Adaptor

Allows fitting of Model No. TP99 and similar thinners pumps to drums that are fitted with a pouring spout.



J AdBlue®



J TP6808

205L Lift Action Drum Pump with Measure Kit

Made from high quality polypropylene and LDPE plastic, pump has a broad chemical resistance, including mild solvents. Acid resistant, caustic resistant, and resistant to chlorine based chemicals. Pumps soaps, cleaning chemicals, sanitisers, antifreeze, AdBlue®, battery acid and more. Supplied with adjustable 2" BSP adaptor and dip tube suitable for 205L drums. Features lift action operation which pumps on the way up as well as the down push, enabling a larger delivery per stroke. Supplied with a lock on measuring bottle for effective pumping with no leaks or spillages. Pump also features a locking strap to prevent accidental operation whilst not in use.



A TP16
14L Oil Dispensing Unit

Self-priming lever pump manufactured from galvanized steel with 14L reservoir. Features carry handle for ease of manoeuvrability and foot plate for stability while in use. 1.8m Delivery hose with angled spout. Drip opening/spout storage within bucket cover for tidy storage when not in use. Suitable for oils up to SAE 40 viscosity.

Capacity:	14L
-----------	-----



B TP17
20L Mobile Gear Oil Dispensing Unit

Steel construction self-priming lever pump. Fitted with heavy-duty wheels and gripped handle for ease of manoeuvrability. Features a 20L reservoir, 1.9m delivery hose and flow control tap with angled spout. Spout holder within bucket cover for tidy storage when not in use. Suitable for gear oil and fluids with similar viscosity.

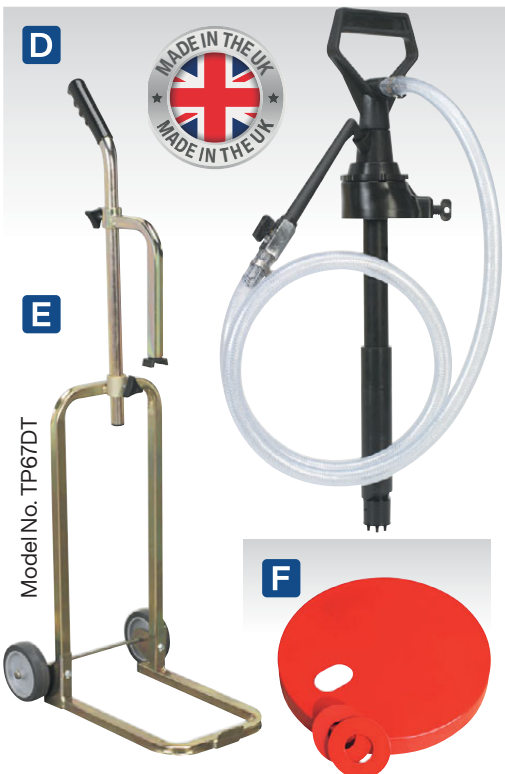
Capacity:	20L
-----------	-----



C TP70
10.5L Gear Oil Dispensing Unit

Fabricated steel container with powder coated finish and spring-cap lid. Rotary type pump with clear, plastic tube delivers and retrieves oils and fluids. Fitted with rigid extension and hanging peg. Suitable for gear oil and fluids with similar viscosity.

Capacity:	10.5L
-----------	-------



D TP67
Gear Oil Pump

Self-priming pump with polypropylene body. Suitable for pumping gear-oil or other products with a similar viscosity. Includes 1.5m of hose and universal adaptor. Note: If the container you have will not accept direct mounting of Model No. TP67, order **E** Model No. TP67DT Trolley and **F** Model No. TP67/X Top Plate. The pump fixes to the top plate which in turn mounts onto the trolley and avoids the need to connect the pump directly to the container.

Model No. TP67/X



G VS70096
5L Gear Oil Dispensing Unit

Pump operated oil dispensing unit with a 5L capacity. Ideal for filling manual transmissions and differentials. Supplied with flexible adaptor and 100° angled metal adaptor. Features a fluid shut-off valve to prevent accidental spillage. Includes a pressure gauge.

Capacity:	5L
Maximum Pressure:	15psi(1bar)
Hose Length:	1.5m



H VS7009
7L Gear Oil Dispensing Unit

Manually operated oil dispensing unit manufactured from composite materials. Large visual measurement will identify amount dispensed. Supplied with a range of five automatic transmission fluid adaptors. Delivers approximately 70ml per stroke. Features a fluid control valve and adaptor storage to minimize oil leakage when not in use.

Capacity:	7L
Hose Length:	1.5m



A VS407
350ml Oil Inspection Syringe

Multipurpose syringe with Viton® seal, ideal for the transfer of oils/fluids to and from vehicle components such as gearboxes and differentials. Translucent body allows easy inspection of oils and fluids.

Compatibility: AdBlue®, Antifreeze, Brake Fluid, Diesel, Oil, Water

Capacity: 350ml



B AK47
500ml Oil Suction Syringe - Composite Body

Single action plastic bodied suction tube with T-bar type plunger. Ideal for use on vehicles and machinery for removing oil from gearboxes and differentials. Supplied with 300mm transparent flexible suction hose with Ø10mm bore.

Capacity: 500ml



C AK54
550ml Oil Suction Syringe

Single action plastic bodied suction tube with T-bar type plunger. Ideal for use on vehicles and machinery for removing oil from gearboxes and differentials. Translucent body allows easy inspection of oils and fluids. Supplied with 300mm transparent flexible suction hose with Ø10mm bore.

Capacity: 550ml



D AK46
500ml Oil Suction Syringe - Metal Body

Painted cast steel suction tube with T-Bar type plunger. Particularly useful for removal of oil from gearboxes and differentials. Supplied with 300mm flexible suction hose.

Capacity: 500ml



E VS404
200ml Oil & Brake Fluid Inspection Syringe

Multipurpose syringe with Viton® seal, ideal for the transfer of oils/fluids to and from vehicle components such as brake master cylinders, oil filter housings, power steering reservoirs, gearboxes and differentials. Translucent body allows easy inspection of oils and fluids.

Capacity: 200ml



F VS405
1.5L Oil Inspection Syringe

Multipurpose syringe with Viton® seal, ideal for the transfer of oils/fluids to and from vehicle components such as brake master cylinders, oil filter housings, power steering reservoirs, gearboxes and differentials. Translucent body allows easy inspection of contents.

Capacity: 1.5L



G VS408
3pc Fluid Transfer Syringe Set

Three multipurpose syringes with Viton® seals, ideal for the transfer of oils/fluids to and from vehicle components such as gearboxes and differentials. Set contains two suction syringes with collection bottles and a traditional suction/pump syringe with fluid shut-off valve. Translucent bodies allow easy inspection of oils and fluids. Accessories include a wall mounting board with colour-coded brackets and syringe clips to distinguish fluid usage.

Fluid Compatibility: AdBlue®, Antifreeze, Brake Fluid, Diesel, Oil, Water

Collection Bottle Capacity: 1L

Syringe Capacity: 350ml



H AK471
Dual Action Transfer Gun

Draws in and pumps out liquid in a single stroke. Easy and safe answer to fluid transfer, especially useful in transferring media unsafe for body contact. Rugged aluminium die-cast head. Steel barrel in premium powder coated finish with heavy duty rubber plunger. Comes with 2.4m of vinyl hose, 1.2m on each valve.



I VS558
550ml Fluid Transfer/Inspection Syringe

Multipurpose syringe with Viton® seals, ideal for the transfer of oils/fluids to and from vehicle components such as gearboxes and differentials. Translucent body allows easy inspection of contents. Dual feature allows fluid to be extracted on pull stroke and expelled on push stroke, for fluent transfer of fluid.

Fluid Compatibility: AdBlue®, Antifreeze, Brake Fluid, Diesel, Oil, Water

Capacity: 550ml



A SCK05
Drum Topper - Pack of 5

Safely absorbs oils, fuels, water, coolant, solvents and non hazardous liquids. Sits in place to catch drips and absorb leaks to keep workplace clean and safe. No granular material that can cause cross contamination. Diameter and holes made to fit 205L drum tops. Supplied as pack of five pads.

Size:	Ø560mm
Pack Quantity:	5



B SEE BELOW
Metal Oil Cans with Flexible Spout

Metal cans with flexible spout and thumb operated lever action.

Model No:	Size:
TP05	500ml
TP1000	1000ml



D SAP01
Spill Absorbent Pads - Pack of 100

Fast acting, high retention spill absorbent pads ideal for absorbing a variety of fluids including oil, fuel, coolants, solvents and water. Manufactured from 100% high grade polypropylene with a double weight cover stock on one side for maximum absorbency and resistance. Each pad absorbs up to 1L of fluid.

Size:	500 x 400mm
-------	-------------



C TP04
180ml Oil Can with Flexible Spout

Metal can with flexible spout for directional control. Trigger operated action for high pressure oil spray.

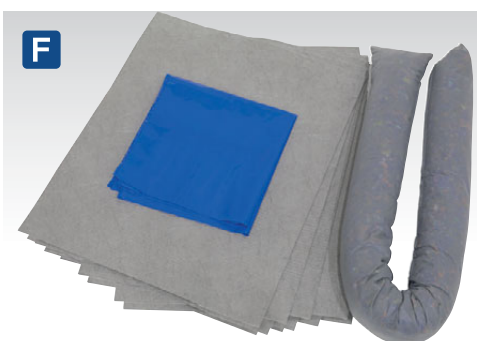
Capacity:	180ml
-----------	-------



E SAS10
Spill Absorbent Socks - Pack of 10

High retention spill absorbent socks ideal for absorbing a variety of fluids including oil, fuel, coolants, solvents and water. These specially designed absorbent socks can be used as barriers during a spill and are ideal for stopping initial spills from spreading, retaining their strength even when wet. Can be placed easily around the bottom of machines or into gaps and runners to absorb and catch leaks. Manufactured with extra thick skin for improved absorbency. Each sock absorbs up to 5L of fluid.

Size:	80mm x 1.2m
Pack Quantity:	10



F-H SEE BELOW
Spill Control Kits

Absorbs up to 15L



Absorbs up to 30L



Absorbs up to 50L

These spill kits have been designed to be a highly mobile solution when responding to spills and leaks as well as assisting companies in complying with current pollution prevention guidelines and other regulations. Suitable for use with oil, petrol, diesel, coolants, mild solvents, water and other spills. A full list of absorbent applications is provided in each kit. Supplied in a resealable storage bag with a range of high quality absorbents, including high-grade polypropylene pads that can absorb up to 1L of fluid and featuring a double weight cover stock for maximum absorbency. Also supplied with 1.2m absorbent socks specially designed to absorb up to 5L of fluid and create barriers to keep spills from spreading.

Model No:	Capacity:	Contents:	Sizes:
F SCK15	15L	Pad (x10), Sock (x1), Disposal Bag with Ties (x1)	Pad - 500 x 400mm, Sock - 80mm x 1.2m
G SCK30	30L	Pad (x15), Sock (x3), Disposal Bag with Ties (x1)	Pad - 500 x 400mm, Sock - 80mm x 1.2m
H SCK50	50L	Pad (x25), Sock (x5), Disposal Bag with Ties (x1)	Pad - 500 x 400mm, Sock - 80mm x 1.2m



A AK4560D
Air Operated Oil Dispensing Pump Station

Air operated 3:1 double acting pump for barrels or tanks with 2" BSP fittings. Pump is supplied with air management system and connected to a 940mm rigid suction probe with non-return valve. Features hose for attachment to digital oil meter (Model No. AK4565D supplied) or to optional retractable hose reel (Model No. AK4567D). Suitable for use with engine, hydraulic, synthetic, gear and transmission oils up to SAE150.

Pump Ratio:	3:1
Maximum Flow Rate:	12L/min
Maximum Viscosity:	SAE150
Maximum Output Pressure:	350psi
Maximum Air Pressure:	115psi
Recommended Air Pressure:	70psi
Outlet Size:	1/2" BSP



B AK4563D
Air Operated Gear Oil Dispensing System

Mobile oil dispensing unit with air operated 3:1 double acting pump for gear oil with 2" BSP fittings. Pump is supplied with air management system and connected to a 730mm rigid suction probe with non-return valve. Features 4m hose and digital oil meter (Model No. AK4565D supplied). Also suitable for use with engine, hydraulic, synthetic, gear and transmission oils up to SAE150 in containers up to 50kg.

Pump Ratio:	3:1
Maximum Flow Rate:	12L/min
Maximum Viscosity:	SAE150
Maximum Output Pressure:	350psi
Maximum Air Pressure:	115psi
Recommended Air Pressure:	70psi
Outlet Size:	1/2" BSP
Maximum Trolley Capacity:	50kg



C AK4561D
Air Operated Oil Dispensing System

Mobile oil dispensing unit with air operated 3:1 double acting pump for barrel or tanks with 2" BSP fittings. Pump is supplied with air management system and connected to a 940mm rigid suction probe with non-return valve. Features trolley, 4m hose and digital oil meter (Model No. AK4565D supplied). Suitable for use with 205L drums and with engine, hydraulic, synthetic, gear and transmission oils up to SAE150.

Pump Ratio:	3:1
Maximum Flow Rate:	12L/min
Maximum Viscosity:	SAE150
Maximum Output Pressure:	350psi
Maximum Air Pressure:	115psi
Recommended Air Pressure:	70psi
Outlet Size:	1/2" BSP
Maximum Trolley Capacity:	220kg

D AK4562D
Air Operated Oil Dispensing System with 10m Retractable Hose Reel

Mobile oil dispensing unit with air operated 3:1 double acting pump for barrels or tanks with 2" BSP fittings. Pump is supplied with air management system connected to a 940mm rigid suction probe with non-return valve. Features trolley, 10m retractable hose reel (Model No. AK4567D supplied) and digital oil meter (Model No. AK4565D supplied). Suitable for use with 205L drums and engine, hydraulic, synthetic, gear and transmission oils up to SAE150.

Pump Ratio:	3:1
Maximum Flow Rate:	12L/min
Maximum Viscosity:	SAE150
Maximum Output Pressure:	350psi
Maximum Air Pressure:	115psi
Recommended Air Pressure:	70psi
Outlet Size:	1/2" BSP
Maximum Trolley Capacity:	220kg



E SSP55L
Premium Powder-Free Disposable Nitrile Gloves - Pack of 100

Offers a high degree of protection against a variety of chemicals. For full details, see page 1285.





A AK4567D
10m Retractable Oil Hose Reel

For use with Model No. AK4560D or any pump station. Heavy-duty steel and powder coat finish for corrosion resistance. Four roller fairlead allows smooth running of hose whatever the angle of hose or mounting position of reel. Multi-position ratchet lock with fully enclosed spring. Includes 1.5m connection hose for connecting reel to pump.

Hose Length:	10m
Hose Inlet/Outlet:	1/2" BSP
Maximum Pressure:	2000psi
Hose Size (ID):	Ø1/2"



B AK4565D
Oil Hose End Gun with Digital Meter

Robust oil dispensing gun incorporating digital meter, manual shut-off and tough rubber protection guard. Fitted with flexible extension and non-drip nozzle. Easy-to-read 5-digit LCD display with resettable individual or cumulative totals.

Note: This gun is not approved for the resale of oil.

Maximum Flow Rate:	35L/min
Inlet Size:	1/2" BSP
Accuracy:	±0.5%



C AK4564D
Oil Hose End Gun

Robust oil dispensing gun incorporating manual shut-off. Fitted with rigid extension, handle lock and non-drip nozzle.

Note: This gun is not approved for the resale of oil.

Maximum Flow Rate:	35L/min
Inlet Size:	1/2" BSP



D EC96
Emergency Fuel Transfer Siphon Pump for Petrol/Diesel/Water/Low Viscosity Fluids

Emergency fuel, siphon action transfer pump with starter bulb and built-in outlet and inlet valve to prevent backflow. Easy-to-use compact manual hand siphon pump with self-priming feature. High quality rubber construction of the pump, making it lightweight and portable. Ideal for use in any workshop or outdoors. Suitable for Petrol, diesel, water, low viscosity fluids and non-aggressive chemicals.

Length:	2m
----------------	----



E TP9312
12V Oil Transfer Pump

Robust and compact portable pump ideal for extracting engine oil or diesel. Powered from a 12V battery. Supplied with a 1.2m suction hose, 2m discharge hose and a 1.7m battery cable with clips. Not suitable for use with petrol.



F EC97
Emergency Fuel Transfer Siphon Pump for Petrol/Diesel/Water/Low Viscosity Fluids

Emergency fuel, siphon action transfer pump with starter bulb and built-in outlet and inlet valve to prevent backflow. Easy-to-use compact manual hand siphon pump with self-priming feature. Suitable for Petrol, diesel, water, low viscosity fluids and non-aggressive chemicals.

Length:	1.7m
----------------	------



G DT53
53L Gravity Fed Mobile Dispensing Tank

Manufactured from high-density polyethylene. 53L Capacity suitable for the distribution of diesel, oil and water. Fitted with two roller wheels, hose holder and vent valve. Gravity fed system features a 3m delivery hose and manual dispensing nozzle. Ideal for refilling on site equipment used in locations such as agricultural, boatyards and marinas. Not suitable for petrol.

Maximum Flow Rate:	8L/min
Weight:	8.25kg



Gravity Feed

**A-C SEE RIGHT****55L Portable Dispensing Tanks**

Manufactured from hard-wearing and durable polyethylene. 55L Capacity suitable for the distribution of diesel, oil or AdBlue®. Available in three configurations and colours, Model No. DT55RCOMBO1 (Red) is supplied with Model No. TP54 Oil Rotary Pump, DT55BCOMBO1 (Blue) is supplied with Model No. TP6607 AdBlue® Lever Pump and DT55GCOMBO1 (Grey) is supplied with Model No. TP96 12V Diesel Pump Kit. Units are fitted with two roller wheels, hose holder and vent caps. Each tank features a 2" BSP thread and 4-point screw fittings enabling other pumps to be fitted as required.

Model No:	Application:	Colour:
A DT55RCOMBO1	Oil	Red
B DT55BCOMBO1	AdBlue®	Blue
C DT55GCOMBO1	Diesel	Grey

**D ADB100T****100L Portable AdBlue® Tank 12V**

Manufactured from HDPE for the safe transportation and dispensing of AdBlue® when supplying on site equipment. Supplied with a 12V electric pump, 4m electric cable and clamps, security valve and a 4m delivery hose with automatic fuel nozzle. Can be safely secured and transported on an ATV, pick-up truck or van, using grooves for tie down straps. Not suitable for petrol or diesel.

Capacity:	100L
Power:	180W
Voltage:	12V
Current:	15A
Flow Rate:	20L/min
Size (W x D x H):	900 x 500 x 480mm

**E D100T****100L Portable Diesel Tank 12V**

Manufactured from HDPE for the safe transportation and dispensing of diesel fuel when supplying on site equipment. Complies to ADR 1.1.3.1.C for exemption from requirements of ADR regulations. Supplied with a 12V electric pump, 4m electric cable and clamps, security valve and a 4m delivery hose with fuel nozzle. Can be safely secured and transported on an ATV, pick-up truck or van, using grooves for tie down straps. Not suitable for petrol.

Capacity:	100L
Power:	180W
Voltage:	12V
Current:	15A
Flow Rate:	20L/min
Size (W x D x H):	900 x 500 x 480mm



A 12V

Diesel

200L



12V **B**

Diesel

400L

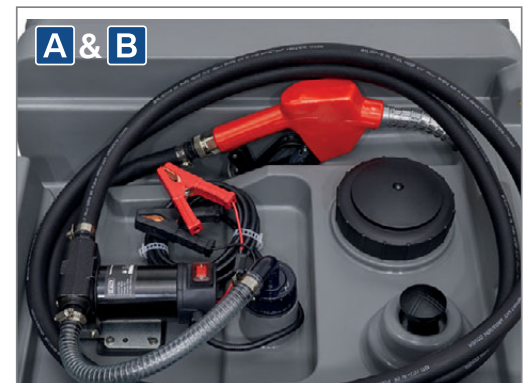


A-B SEE BELOW

Portable Diesel Tanks 12V

Manufactured from HDPE for the safe transportation and dispensing of diesel fuel when refilling on site equipment. Complies to ADR 1.1.3.1.C for exemption from requirements of ADR regulations. Supplied with a 12V electric pump, 4m electric cable and clamps, and a 4m delivery hose with automatic fuel nozzle. Can be safely secured and transported on a pick-up truck or van, using grooves for tie down straps and six handles for positioning. Supplied with lockable cover. Not suitable for petrol.

	A	B
Model No:	D200T	D400T
Capacity:	200L	400L
Power:	180W	180W
Voltage:	12V	12V
Current:	15A	15A
Flow Rate:	20L/min	20L/min
Size (W x D x H):	1100 x 800 x 470mm	1100 x 800 x 720mm



C 12V

AdBlue®
200L



D 12V

Diesel
400L

AdBlue®
50L

C ADB200T

200L Portable AdBlue® Tank 12V

Manufactured from HDPE for the safe transportation and dispensing of AdBlue® when refilling on site equipment. Supplied with a 12V electric pump, 4m electric cable and clamps, and a 4m delivery hose with automatic fuel nozzle. Can be safely secured and transported on an ATV, pick-up truck or van, using grooves for tie down straps and six handles for positioning. Not suitable for petrol or diesel.

Capacity:	200L
Power:	180W
Voltage:	12V
Current:	15A
Flow Rate:	20L/min
Size (W x D x H):	1100 x 800 x 470mm

D D440T

400L/50L Portable Combi Fuel Tank

Manufactured from hard-wearing and durable polyethylene. Main 400L capacity tank suitable for diesel, supplied with a 12V, 40L/min pump kit and automatic shut-off nozzle. A removable 50L tank for AdBlue®, supplied with a 12V, 17L/min pump kit and manual nozzle. Includes 4m delivery hose (x2), dispenser nozzle holder (x2), 4m of cable (x2) and clamps to connect to a battery. Covered by a lockable lid. Not suitable for petrol. Complies to ADR 1.1.3.1.C for exemption from requirements of ADR regulations.

Capacity:	Diesel 400L/AdBlue® 50L
Current:	Diesel Pump; 15A, AdBlue Pump®; 6A
Flow Rate:	Diesel; 40L/min, AdBlue®; 17L/min
Power:	Diesel; 180W, AdBlue®; 120W
Size (W x D x H):	1150 x 800 x 860mm



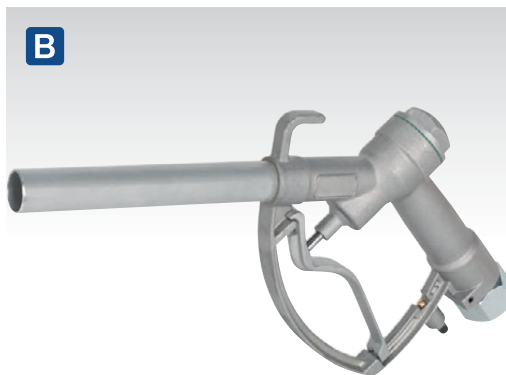
Auto Shut-Off

A TP109

Automatic Shut-Off Delivery Nozzle

Robust, die-cast, aluminium body with rubberised protective cover. Suitable for use with diesel and unleaded petrol dispensed using a pumped system. Automatic, micro-touch valve for instant shut-off when tank is full. Supplied with 3-stage trigger-lock. Suitable as replacement nozzle for Model No. TP955 Diesel/Fluid Transfer System. Not suitable for gravity dispensing.

Maximum Flow Rate:	60L/min
Nozzle Outside Diameter:	Ø21mm
Inlet Size:	1" BSP



B TP108

Manual Dispenser Nozzle

Die-cast aluminium body and trigger assembly. Delivery nozzle suitable for use with diesel and leaded petrol. Supplied with swivel connector. Suitable as replacement nozzle for Model No's TP9624 and TP963 Diesel/Fluid Transfer Pumps.

Maximum Flow Rate:	75L/min
Nozzle Outside Diameter:	Ø25mm
Inlet Size:	1" BSP



C
HIGH FLOW

C TPF01

Transfer Pump Filter

High flow fuel filter with 10 micron fuel filter element. Ideal for filtering out unwanted contaminants from fuel including small particles of rust, scale, grit and dirt. Can be installed on both mobile and stationary fuel pump systems. Features 1" BSP inlet and outlet threads. Fitted with brass drain cock for releasing unwanted contaminants.

Replacement Filter Element:	TPF01.F
-----------------------------	---------



3m

D TP963

Gravity Dispensing Kit

3m Delivery hose with 1" male brass connectors. Supplied with 1" male and female lockable, brass, angle valve and Model No. TP108 delivery nozzle.

Weight:	3.53kg
---------	--------



12V

E TP94

12V Low Voltage Submersible Transfer Pump

Robust and compact portable pump for use with diesel, non-aggressive chemicals and clean or dirty water. Suitable for re-fuelling/fluid transfer of plant, agricultural and marine equipment on site. The pump is supplied with a 3m outlet hose and stainless steel nozzle plus a 4m battery cable with clips. Will fit through a Ø54mm aperture to allow emptying of containers. End cap can be unscrewed for periodic cleaning of the filter.

Voltage:	12V
Current:	4.5A
Duty Cycle:	15min/hr
Flow Rate:	16.5L/min



F TP956

Diesel & Fluid Flow Meter

Volumetric nutating disc meter with 3-digit resettable batch display and 6-digit cumulative total display. Unique filter and flange assembly allows meter to be positioned in four configurations.

Flow Rate:	20-120L/min
------------	-------------



G TP101

Digital Diesel & Fluid Flow Meter

Robust rubber housing with integral digital electronic metering. Easy-to-read large, 4-digit, 28mm high LCD display calibrated in litres, quarts, pints and gallons. Features flow rate indication. 1" x 1" BSP Male/Female fittings. Powered by 2 x AAA batteries (supplied). IP65 Rated protection.

Flow Rate:	7-120L/min
------------	------------



A

12V

230V



A TP6818

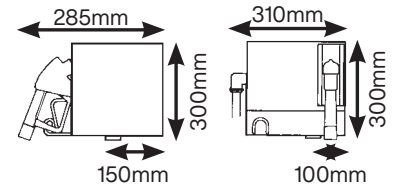
205L 12V & 230V Electric Drum Pump

Electric drum mounted pump designed for pumping diesel, AdBlue®, antifreeze, detergents, water and light oils up to a viscosity of 100cst. Fitted with built-in fuse for protection, with a silenced motor keeping noise to a minimum. Telescopic suction tube features a stainless steel filter at the base of the tube, preventing foreign matter from entering the motor. Pump housing features a convenient holder for storing the dispensing nozzle. Includes 230V mains adaptor and 12V battery clips allowing user to operate unit with whichever supply is available. Supplied with a 2" BSP adaptor, 2m hose and manual dispensing nozzle with spout.

Voltage:	12/230V
Current:	3A
Power:	16.8W
Duty Cycle:	15min on/30min off
Flow Rate:	16L/min
Fuse:	5A

B

230V



B TP955

56L/min Wall Mounting Diesel/Fluid Transfer System with Meter

Self-priming, rotary vane pump with bypass valve. Direct drive 230V motor fitted with overload protector. Volumetric, nutating disc, resettable meter with large 3-digit display. Supplied with Model No. TP109 Automatic Delivery Nozzle and 4m of reinforced 3/4" hose. Unit is suitable for wall, tank or pedestal installation.

Voltage:	230V
Speed:	2900rpm
Current:	3A
Power:	350W
Flow Rate:	56L/min
Pressure:	29psi(2bar)
Protection:	IP55

C

12V

24V



C SEE BELOW

Portable Diesel/Fluid Transfer Pumps

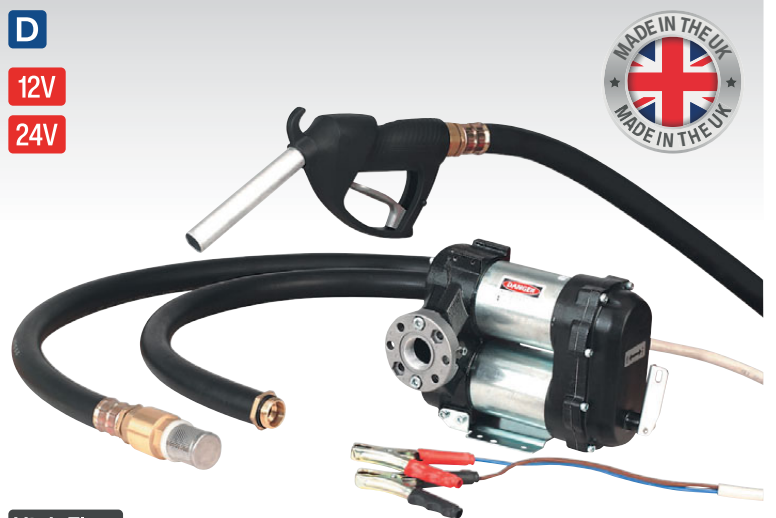
Electric 12 or 24V pump kits with battery clips. Pump housed in a die-cast aluminium casing. Suitable for filling diesel vehicles in the field. Self-priming units deliver up to 46L a minute of fluid. Supplied with 4m of hose and manual delivery nozzle. Includes on/off switch, carry handle, four hose clamps, three hose tails, mounting plate, PTFE tape and suction hose filter. Features in-line fuse with two replacement fuses supplied.

Model No:	TP96	TP9624
Voltage:	12V	24V
Speed:	2600rpm	2600rpm
Current:	18A	11A
Power:	190W	220W
Duty Cycle:	30min/hr	30min/hr
Flow Rate:	46L/min	46L/min

D

12V

24V



High Flow

D SEE BELOW

High Volume Diesel & Fluid Transfer Pumps

Electric 12 or 24V pump kits with battery clips. High flow pump units with bypass valve, suitable for filling diesel vehicles in the field. Cast iron pump body with anti-corrosion finish. Includes on/off switch, delivery hose with manual delivery nozzle and filter.

Model No:	TP98	TP9824
Voltage:	12V	24V
Speed:	2000rpm	2000rpm
Current:	35A	18A
Power:	240W	240W
Duty Cycle:	30min/hr	30min/hr
Flow Rate:	85L/min	85L/min

A 1L



A JMX01 1L 2-Stroke Petrol/Fuel Mixing Bottle

1L Mixing bottle for accurately mixing fuel and oil ratios for 2-stroke engines. Markings at 25:1, 32:1, 40:1 and 50:1, enabling the user to easily identify the correct mixture for their engine.

Capacity:	1L
Ratio:	25:1, 32:1, 40:1, 50:1

B

500ml



B JM500 500ml Mixture Measuring Jug

Translucent measuring jug with 500ml capacity. Easy-to-read scale in litres, millilitres and mixture percentage levels. Accurate to $\pm 1\%$.

Capacity:	0.5L
-----------	------

C

1L

5L



C SEE BELOW Measuring Jugs

Opaque, low density polythene measuring jugs with scales for indication purposes only.

Model No:	Capacity:
J1E	1L
J5E	5L

D

1.5L

5L



D SEE BELOW Measuring Jugs

Heavy-duty ergonomic design with easy-to-read scale and large base for added stability. Manufactured from hard-wearing polyethylene, resistant to oil, fuel and most acids. Fixed straight spout. Scale for indication purposes only.

Model No:	Capacity:
J1RS	1.5L
J5RS	5L

E

E SEE BELOW Translucent Measuring Jugs

A range of five translucent polypropylene measuring jugs with easy-to-read scales for accurate measurement ($\pm 1\%$).

Model No:	Capacity:
JT0250	0.25L
JT0500	0.5L
JT1000	1L
JT2000	2L
JT5000	5L

F

1L

5L



F SEE BELOW Measuring Jugs with Rigid Spout

Robust and stable ergonomic design. Manufactured from hard-wearing polyethylene, resistant to oil, fuel and most acids. Fixed straight spout. Scales on these jugs are for indication purposes only and are not intended for 100% accuracy.

Model No:	Capacity:
J1	1L
J5	5L

G



1L

2L

G SEE BELOW

Oil Containers with Lid & Flexible Spout

Polyethylene jugs resistant to oil and similar viscosity fluids. Removable flexible spout. Screw cap and lid enable jugs to be used as a container, to ensure safer handling of liquid, preventing spillages. Scales on these jugs are for indication purposes only and are not intended for 100% accuracy.

Model No:	Capacity:
JDL1	1L
JDL2	2L

H



5L

H SEE RIGHT 5L Oil Containers with Lid & Flexible Spout

Polyethylene jugs resistant to oil and similar viscosity fluids. Removable flexible spout. Screw cap and lid enables jug to be used as a container, to ensure safer handling of liquid, preventing spillages. Scales on these jugs are for indication purposes only and are not intended for 100% accuracy.

Model No:	Capacity:	Lid Colour:
JDL5	5L	Black
JDL5R	5L	Red
JDL5B	5L	Blue
JDL5G	5L	Green
JDL5L	5L	Lime
		Description:
JDL5SET		Set of 5 (1 of each)



A SEE BELOW
Metal Measuring Jugs with Flexible Spout

Wide mouthed tin-plated jugs with flexible metal spout. Handle for safe and easy pouring.

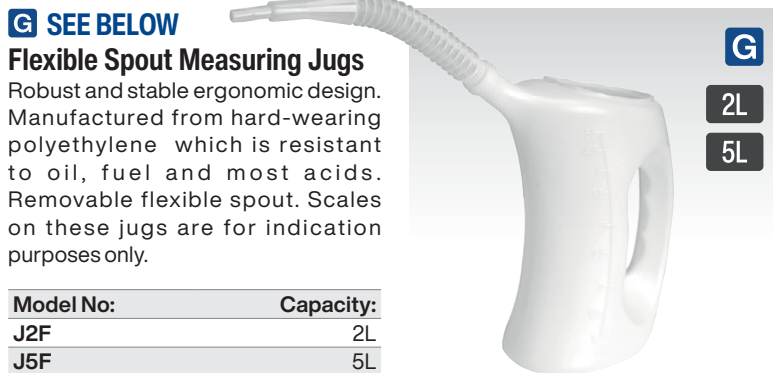
Model No:	Capacity:
JM1F	1L
JM2F	2L



B VS563
5L Measuring Jug with Flexible Spout

Transparent measuring jug with removable flexible spout. Wide base for extra stability.

Capacity:
5L



G SEE BELOW
Flexible Spout Measuring Jugs

Robust and stable ergonomic design. Manufactured from hard-wearing polyethylene which is resistant to oil, fuel and most acids. Removable flexible spout. Scales on these jugs are for indication purposes only.

Model No:	Capacity:
J2F	2L
J5F	5L



H VS7100
Engine Oil Funnel - BMW, Mercedes, Toyota/Lexus, VAG

Fastens and seals into the engine filler. Hands-free operation with no mess or spills.

Applications:
BMW, Mercedes, Toyota/Lexus, VAG

I VS7101
4pc Engine Oil Funnel - BMW, Fiat, Ford, Mazda, Mercedes, Toyota/Lexus, VAG

Fastens and seals into the engine filler with four manufacturer specific adaptors. Covering a large proportion of modern vehicles including the VAG range, Fiat 500 0.9L MultiAir and Fiesta 1.0L EcoBoost. Hands-free operation with no mess or spills. See instructions on www.sealey.co.uk for complete list of vehicle applications.

Adaptor 1:	Ø37 x 3mm Pitch - Threaded
Adaptor 2:	Bayonet - 9mm Lugs
Adaptor 3:	Ø33.5mm - Twist Fitting
Adaptor 4:	Ø33 x 3.5mm Pitch - Threaded



C-F SEE BELOW
Engine Oil Funnel Sets

Fastens and seals into the engine filler with two manufacturer specific adaptors. Covering a large proportion of modern vehicles. Hands-free operation with no mess or spills. See instructions on www.sealey.co.uk for complete list of vehicle applications.

C VS7104
3pc Renault, Nissan

Adaptors:	1; Bayonet - 6mm Lugs
-----------	-----------------------

D VS7102
4pc Engine Oil Funnel Set Renault, Nissan

Adaptors:	1; Bayonet - 8mm Lugs, 2; Bayonet - 6mm Lugs
-----------	--

E VS7105
5pc Audi, Seat, Skoda, Volkswagen

Adaptors:	1; Knob Type - 39mm, 2; Clip Type - 38mm, 3; Ø45mm - Twist fitting
-----------	--

F VS7106
4pc BMW, Mercedes-Benz

Adaptors:	1; Ø51mm Twist Fitting, 2; Clip Type - 38mm
-----------	---



J VS7010
Oil Filter Drain Tube - VAG FSi

Designed to attach to the oil filter housing on VAG FSi petrol engines. Allows the filter housing to be drained before removal, preventing spillage. Use in conjunction with a suitable oil drainer.

Tube Length:	500mm
--------------	-------



A-D SEE BELOW

Metal Funnels with Filter

Manufactured from tin-plate with polyethylene spout. Removable brass filter. High rim acts as splash guard. Handle for safe and easy pouring. Suitable for industrial and workshop use. Model No's FM16F and FM20F feature fixed and flexible spouts.

Model No:	Spout Type:	Diameter:
A FM16	Fixed	Ø160mm
B FM20	Fixed	Ø200mm
C FM16F	Flexible/Fixed	Ø160mm
D FM20F	Flexible/Fixed	Ø200mm

E-F SEE BELOW

Funnels with Filter & Closing Lid

Heavy-duty polyethylene funnels resistant to oil, fuel and some acids. Model No. F99240 supplied with 2" BSP drum adaptor for direct fitting to 205L drum. Features contoured body for easy handling, dust cover and flexible spout. Fitted with integral wire mesh filter to keep contaminants out. Manufactured with splash-proof curved funnel opening.

Model No:	2" BSP Fitting:	Diameter:
E F99200	✗	Ø200mm
F F99240	✓	Ø240mm



G VFF1
Ø160mm Valved Funnel with Flexible Spout & Filter

Heavy-duty polyethylene funnel resistant to oil, fuel and some acids. Features lockable valve nozzle and integral wire mesh filter to keep contaminants out. Supplied with flexible spout with end cap. Fitted with handle for safe and easy pouring.

Diameter:	Ø160mm
------------------	--------



H F6
Ø160mm Funnel with Flexible Spout & Filter

Polyethylene funnel resistant to oil, fuel and some acids. Features a removable flexible spout and side handle. Supplied with internal mesh filter.

Diameter:	Ø160mm
------------------	--------



I UOF2
2pc Universal Oil Funnel

Specially designed funnel with a clamp that allows the user to pour using both hands and that can adjust to different pipe widths. With a transparent, lower chamber to watch the flow of fluid. Will fit pipes 22mm to 72mm wide.

Diameter:	Ø124mm
------------------	--------



J F16
Ø160mm Funnel with Fixed Offset Spout & Filter

Polyethylene funnel resistant to oil, fuel and some acids. Fitted with offset rigid spout. Ideal for vehicles with smaller diameter unleaded filler necks. Fitted with handle and removable brass filter.

Diameter:	Ø160mm
------------------	--------



K F16F
Ø160mm Funnel with Flexible Spout & Filter

Polyethylene funnel resistant to oil, fuel and some acids. Removable 2-step flexible spout. Ideal for vehicles with smaller diameter unleaded filler necks. Fitted with handle and removable brass filter.

Diameter:	Ø160mm
------------------	--------



L F2F
Ø200mm Funnel with Flexible Spout & Filter

Polyethylene funnel resistant to oil, fuel and some acids. Removable 2-step flexible spout. Grip tab with integral hanging eye. Ideal for vehicles with smaller diameter unleaded filler necks. Fitted with handle and removable brass filter.

Diameter:	Ø200mm
------------------	--------



A-B SEE BELOW
Economy Fixed Spout Funnels

Polyethylene funnels suitable for changing oil, antifreeze and windscreen wash. Rigid straight spout with ventilation tube. Grip tab with integral hanging eye. This economy range is available in two sizes. Not suitable for acetone, gun wash, thinners or petrol.

Model No:	Diameter:
A F1E	Ø115mm
B F2E	Ø190mm



C NEW
F92
4pc Economy Fixed Spout Small Funnel Set

Small polyethylene funnel set suitable for many fluids including oil, antifreeze and windscreen wash. Set comprises Ø50mm, Ø75mm, Ø95mm and Ø115mm Funnels with hanging tabs. Not suitable for acetone, gun wash, thinners or petrol.

Diameters:	Ø50, 75, 95, 115mm
------------	--------------------



D F94
4pc Economy Fixed Spout Funnel Set

Polyethylene funnel set suitable for many fluids including oil, antifreeze and windscreen wash. Set comprises Ø77mm, Ø96mm, Ø113mm and Ø138mm funnels with hanging tabs. Not suitable for acetone, gun wash, thinners or petrol.

Diameters:	Ø77, 96, 113, 138mm
------------	---------------------



E F98
3pc Fixed Spout Funnel Set

Polyethylene funnel set suitable for many fluids including detergents, pesticides, diesel and petrol. Set comprises Ø75mm, Ø150mm and Ø250mm funnels with hanging tabs. Not suitable for acetone, gun wash or thinners.

Diameters:	Ø75, 150, 250mm
------------	-----------------



F-H SEE BELOW
Fixed Spout Funnels

Polyethylene funnels resistant to oil, fuel and some acids. Rigid straight spout with ventilation tube. Grip tab with integral hanging eye. Model No's F2 and F3 include filter.

Model No:	Diameter:
F F1	Ø120mm
G F2	Ø200mm
H F3	Ø250mm



G & H include filter.



I SEE BELOW
Large Fixed Spout Funnels

Polyethylene funnels resistant to oil, fuel and some acids. Features a rigid straight spout and an integral side hook for hanging.

Model No:	Diameter:
F4	Ø185mm
F5	Ø250mm



J OIL/F
Oil Funnel

Square design and tapered spout fits into most engine filling holes. Manufactured from durable polypropylene material. Rectangular aperture (180 x 100 x 145mm) to accommodate up-ended containers.



K OIL/TF
Tractor Funnel with Debris Filter

Heavy-duty funnel manufactured from high-density polyethylene. 255 x 165mm Aperture to accommodate up-ended containers. Supplied with debris filter. Tapered spout with venting ribs.



A F10COMBO

10pc Funnel Combo

Please refer to the individual Model No's for full specification.

Contents:

- F94 - 4pc Economy Fixed Spout Funnel Set
- F12S - Clip-On Funnel with Spout (x2)
- OIL1F - Oil Funnel
- F6 - Ø160mm Flexible Spout Funnel with Filter
- VFF1 - Ø160mm Flexible Spout Valved Funnel with Filter
- F99200 - Ø200mm Funnel with Closing Lid

B SEE BELOW

Clip-On Funnels with Spout

Suitable for use with detergent, antifreeze, coolants, oil, petrol and diesel. Funnel clips on bottle necks of most bottles to prevent spills using a Ø25-60mm diameter opening. Supplied with 170mm flexible hose.

Model No:	F12S	F12
Diameter:	Ø25-60mm	Ø25-60mm
Quantity:	Single	Display Box of 12



C MF2/BC

2L Measuring Funnel with Lid and Base

A jug and funnel built into one. Graduations that can be used for transferring a measured quantity of fluid without any spills or splashes. Simple press of a lever dispenses liquid through a built-in metal sieve to ensure contaminant-free transfer. Replace funnel back into base in between use, no need to pour unwanted liquids back into original storage container. Recommended for use with oils and other similar viscosity liquids. Do not use with water based media.

Capacity: 2L



D-F SEE BELOW

Water Containers

Plastic water containers with screw cap and inner sealing plug. Model No's WC20 and WC30 feature spout and provision for air vent for smooth pouring.

Model No:	D WC10	E WC20	F WC30
Capacity:	10L	20L	30L



G-I SEE BELOW

Fluid Containers with Tap

Professional quality fluid containers. Manufactured from heavy-duty thick walled polyethylene making these containers highly resilient to general wear. Features ergonomically designed body and handle for added stability and control. Fitted with screw cap and swivel tap for easy fluid control.

Model No:	G WC10T	H WC20T	I WC35T
Capacity:	10L	20L	35L



A EC94

Ø1/2" ID Hose Jiggle Syphon

Syphon type drainer with jiggle action. Simply move hose up and down in vertical position to start flow. Supplied with a Ø1/2" ID 1.75m hose. Also suitable for petrol.

Length: 1.75m



B EC9434

Ø3/4" ID Hose Jiggle Syphon

Syphon type drainer with jiggle action. Simply move hose up and down in vertical position to start flow. Supplied with a Ø3/4" ID 2m hose. Also suitable for petrol.

Length: 2m



C NEW

5L

30ml per stroke

C TP5000

5L Container Hand Pump

Hand pump that fits 5L containers with a 38mm screw top. Features quick-fit nozzle. Mess and waste liquid eliminated. Suitable for a wide variety of viscous products, such as engine oil, coolant and detergents etc. Includes a set of three clear hoses; 80, 135, 590mm.



D EC96

Emergency Fuel Transfer Syphon Pump for Petrol/Diesel/Water/Low Viscosity Fluids

Emergency fuel, syphon action transfer pump with starter bulb and built-in outlet and inlet valve to prevent backflow. Easy-to-use compact manual hand siphon pump with self-priming feature. High quality rubber construction of the pump, making it lightweight and portable. Ideal for use in any workshop or outdoors. Suitable for Petrol, diesel, water, low viscosity fluids and non-aggressive chemicals.

Length: 2m



E EC97

Emergency Fuel Transfer Syphon Pump for Petrol/Diesel/Water/Low Viscosity Fluids

Emergency fuel, syphon action transfer pump with starter bulb and built-in outlet and inlet valve to prevent backflow. Easy-to-use compact manual hand siphon pump with self-priming feature. Suitable for Petrol, diesel, water, low viscosity fluids and non-aggressive chemicals.

Length: 1.7m



F TP501

Fluid Transfer Pump

Brass constructed pump suitable for syphoning a variety of fluids including oils, coolants, transmission fluid, diesel and antifreeze. Fitted with removable neoprene end caps. Supplied with 1m x 6mm intake hose and 600mm x 12mm discharge hose. Ideal for draining gearboxes and differentials. Delivers approximately 100ml per stroke.



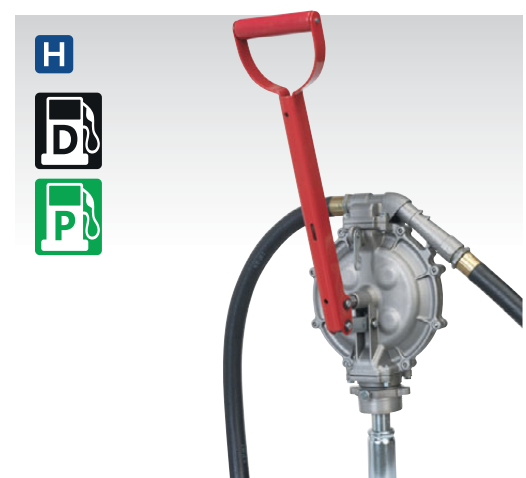
G TP50

Multipurpose Syphon & Pump Kit

Composite pump assembly suitable for the syphoning of fluids including diesel, petrol, oil, detergents and pesticides. Not suitable for use with aggressive detergents and solvents. Supplied with two 1.3m transfer hoses and a 1.2m narrow bore hose for performing oil extraction through the dipstick tube. The pump may also be used on inflatables such as footballs and tyres - a 400mm hose and various clip-on connectors are supplied for this purpose.



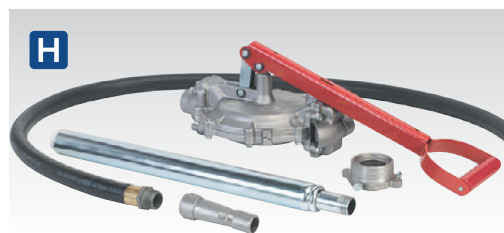
TP50 is suitable for syphoning petrol and diesel.



H TP6918

Double Diaphragm Fuel Transfer Pump

Self-priming high performance double diaphragm lever pump. Heavy-duty die-cast aluminium pump head with stainless steel pistons and fuel resistant nitrile rubber diaphragm. 2" BSP Connector and telescopic dip tube to suit 50 to 205L drums. Approximately 800ml per full stroke discharge. Supplied with 8ft anti-static discharge hose and delivery nozzle with holder. Suitable for various oils, petrol, diesel, antifreeze, paraffin and other non-corrosive fluids.



STORAGE OF FUEL

Note that most local authorities permit the in-use storage of limited quantities of fuels without holding a storage licence. Check with your local authority for more information.



A-B
Supplied with flexible spout.



A-B SEE BELOW

3L Stackable Fuel Cans with Flexible Spout

Plastic fuel cans with safety screw lock cap and flexible spout. Stackable design to save space. Colour-coded for easy identification of contents. Red - Lead Replacement Fuel, Black - Diesel.

	A	B
Model No:	JC3R	JC3B
Colour:	Red - Lead Replacement Fuel	Black - Diesel
Capacity:	3L	3L



C-D SEE BELOW
Jerry Can Adaptors

Jerry can adaptors suitable for converting standard fuel cans into portable fuel tanks for generators, engines and other equipment. Features breather holes and bayonet style fittings to attach onto all Sealey metal fuel cans. Ideal for testing/running engines on alternative fuel sources. JCA2 features secondary return hose fitting. Suitable for Ø8mm hose (not included).

Model No:	Adaptor Type:
C JCA1	Single Tube
D JCA2	Double Tube



For details on our Battery Operated Jerry Can Pump, Model No. TP80, see page 659.



K SEE BELOW
Vehicle Brackets for Jerry Cans

Lockable vehicle mounting brackets with anti-vibration mounts for Sealey metal 10L and 20L jerry cans. Ideal for a variety of vehicles including agricultural, 4x4 and commercial. Padlock not included.

Model No:	Jerry Cans Suitability:
JC10VB	10L
JC20VB	20L



E-J SEE BELOW

5L & 10L Fuel Cans with Flexible Spout

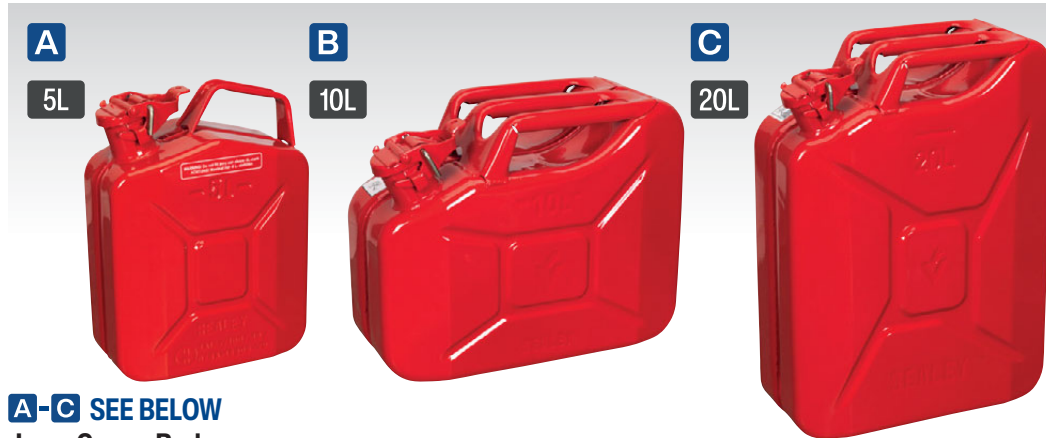
Plastic fuel cans with safety screw lock cap and flexible spout. View strip to gauge fuel level. Colour-coded for easy identification of contents. Red - Lead Replacement Fuel, Green - Unleaded Fuel, Black - Diesel.

	E	F	G	H	I	J
Model No:	JC5R	JC10PR	JC5G	JC10PG	JC5B	JC10PB
Colour:	Red	Red	Green	Green	Black	Black
Capacity:	5L	10L	5L	10L	5L	10L

A-I SEE BELOW

5, 10 & 20L Jerry Cans

Manufactured from 0.9mm pickled steel sheet with fuel resistant lining. Available in 5L, 10L and 20L capacities. Colour-coded for easy identification of content. Red - Lead Replacement Fuel, Green - Unleaded Fuel, Black - Diesel. Includes unique wide channel breather for smoother pouring. Leak-proof bayonet closure allows storage of the can in any position. The bayonet is additionally secured with a locking pin to prevent accidental opening. Lined inner tank to prevent rusting from petrol, diesel, oil, water or alcohol. Manufactured and tested to comply with UN Dangerous Goods and DIN standards.



A-C SEE BELOW

Jerry Cans - Red

	A	B	C
Model No:	JC5MR	JC10	JC20
Capacity:	5L	10L	20L
Optional Spout:	JC20/S	JC20/S	JC20/S



J SEE BELOW

Metal Jerry Can Pouring Spouts

Detachable pouring spouts for JC5M, JC10 and JC20 Series Jerry Cans.

Model No:	Type:
JC20/S	Red - Lead Replacement Fuel
JC20G/S	Green - Unleaded Fuel
JC20B/S	Black - Diesel



D-F SEE BELOW

Jerry Cans - Green

	D	E	F
Model No:	JC5MG	JC10G	JC20G
Capacity:	5L	10L	20L
Optional Spout:	JC20G/S	JC20G/S	JC20G/S



K SEE BELOW

Metal Jerry Can Flexible Pouring Spouts

Detachable flexible pouring spouts for JC5M, JC10 and JC20 Series Jerry Cans.

Model No:	Type:
JC20D/S	Diesel
JC20P/S	Petrol



G-I SEE BELOW

Jerry Cans - Black

	G	H	I
Model No:	JC5MB	JC10B	JC20B
Capacity:	5L	10L	20L
Optional Spout:	JC20B/S	JC20B/S	JC20B/S



L JCSS

5L & 10L Metal Jerry Can Smart Spout

Detachable smart spout for Model No's. JC5M and JC10 Series Jerry Cans. Automatic stop feature ensures no overspill occurs.



M JCS01

Jerry Can Seal

Universal seal suitable for standard 5, 10 and 20L Jerry Cans.

Barrel Bunds

Anyone storing oil in containers greater than 200L are affected by the Control of Pollution (Oil Storage) (England) Regulations 2001. Any tank, container or drum must be banded. The bund must have a capacity of no less than 110% of the largest or 25% of their total aggregate storage capacity, whichever is the greater. All Sealey Barrel Bunds comply with these regulations.

A-B SEE BELOW

Polyethylene Barrel Bunds

Manufactured from high-density polyethylene, making these bunds ideal for storing aggressive chemicals. Lightweight construction for easy transportation and positioning, yet still strong and durable.

Model No:	Dimensions (W x D x H):	Drum Capacity:
A DRP12	1220 x 820 x 330mm	2 x 205L
B DRP13	1280 x 1280 x 275mm	4 x 205L



A



2 x 205L Drum Capacity

B



4 x 205L Drum Capacity

C-D SEE BELOW

Steel Barrel Bunds

Manufactured from heavy-duty 1.75mm steel. Removable galvanized steel grid platform. Bunds can be accessed and moved by pallet truck and forklift from all four sides.

Model No:	Dimensions (W x D x H):	Drum Capacity:
C DRP10	1340 x 800 x 335mm	2 x 205L
D DRP11	1200 x 1200 x 275mm	4 x 205L

E DRP15

Adjustable Height Ramp for Barrel Bunds & Kerbs

Adjustable ramp enables easy drum handling over kerbs and onto barrel bunds. Made from heavy-duty steel with tread plate to help prevent slipping whilst moving drum. Height adjustment allows ramp to fit barrel bunds from 275 to 345mm high. Adjustable kerb attachment allows easy-access up and down kerbs from 90 to 140mm high.

Length:	965mm
Ramp Width:	750mm
Overall Width:	830mm
Barrel Bund Height Adjustment:	275-345mm
Kerb Height Adjustment:	90-140mm



C



2 x 205L Drum Capacity

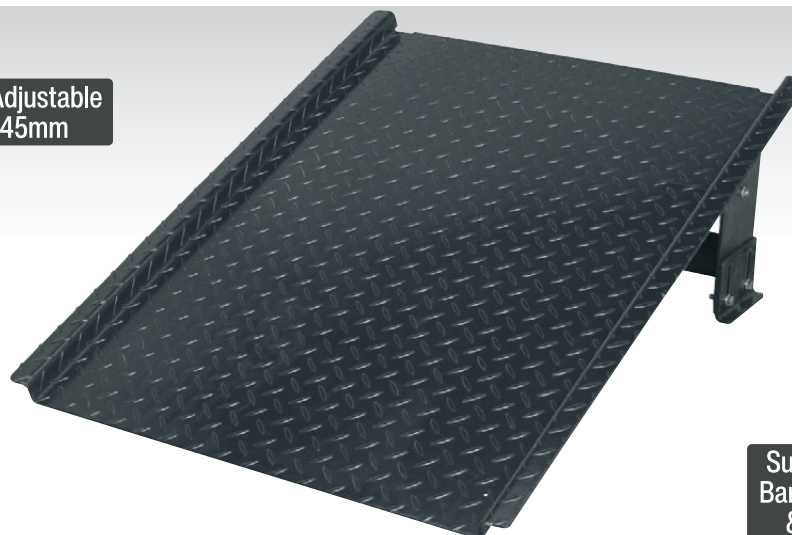
D



4 x 205L Drum Capacity

E

Height Adjustable
90-345mm



Suitable for
Barrel Bunds
& Kerbs

A-B SEE BELOW

Polyethylene Barrel Bunds

Manufactured from high-density polyethylene, making these bunds ideal for storing aggressive chemicals. Lightweight construction for easy transportation and positioning, yet still strong and durable. Features 250L spill tray, compatible with most forklifts and pallet trucks.

Model No:	Dimensions (W x D x H):	Drum Capacity:
A DRP17	1300 x 750 x 440mm	2 x 205L
B DRP18	1380 x 1290 x 280mm	4 x 205L

C DRP24

IBC Bund 1660 x 1670 x 710mm

Heavy-duty polyethylene IBC bund designed to catch and prevent spillages. Features polyethylene centre support providing added strength and stability to load. Manufactured with 1100L spill tray to comply with storage regulations. Suitable for storage of 1x IBC container. Can be easily moved by forklifts and pallet trucks. Max load 2500kg.

Dimensions (W x D x H):	1660 x 1670 x 710mm
Drum Capacity:	1 x IBC



D DRP20

2 Drum Work Floor 1600 x 800 x 150mm

Heavy-duty polyethylene work floor suitable for storing two 205L drums. Features 120L spill tray under removable platform to catch and prevent oil and chemical spillages. Suitable for short term storage of 205L drums. Designed for creating a dispensing area or for static containment of spills. Manufactured with slip resistant surface and lightweight construction allowing easy transportation and positioning. Ramp available to access work floor, order Model No. DRP21.

Dimensions (W x D x H):	1600 x 800 x 150mm
Drum Capacity:	2 x 205L

E DRP21

Work Floor Ramp

Heavy-duty polyethylene ramp compatible with Model No. DRP20. Fitted with locating pins which slot into DRP20 Work Floor for added stability when manoeuvring drum. Manufactured with non-slip resistant texture. Features user friendly gradient for easy loading.

Dimensions (W x D x H):	810 x 1290 x 180mm
--------------------------------	--------------------

A



2 x 205L Drum Capacity

B



4 x 205L Drum Capacity

C



1 x IBC Drum Capacity



Anyone storing oil in containers greater than 200L are affected by the Control of Pollution (Oil Storage) Regulations 2001. Any tank, container or drum must be banded. The bund must have a capacity of no less than 110% of the largest or 25% of their total aggregate storage capacity, whichever is the greater. All Sealey Barrel Bunds comply with these regulations.

D



2 x 205L Drum Capacity

E





A **DRP34**
2 Drum Storage Racking
 Manufactured from heavy-duty steel. Stores two 205L drums in a horizontal position.
Dimensions (W x D x H): 1145 x 760 x 325mm



B **DRP22**
Dispensing/Storage Drum Rack Unit
 High-density polyethylene construction, suitable for storing 2 x 205L drums. Moulded with gradual decline and recesses to secure drum. Horizontal storage of drums provides access to dispense contents into smaller containers. Fitted with 450L spill tray ideal for catching and preventing spillages. Can be easily moved by forklifts and pallet trucks.
Dimensions (W x D x H): 1375 x 1350 x 635mm
Drum Capacity: 2 x 205L



C **NEW**
DRP102
86L Drum Tray
 Pouring, made easy. The Drum Tray is the perfect accessory for collecting spills and reducing waste when filling drums. Compatible with standard 205L drums. Raised ribs help prevent collected spills from coming into contact with the base of the drum.
Diameter: 890mm
Height: 190mm
Capacity: 86L



D-K SEE BELOW

Spill Trays

Manufactured from high-density polyethylene, making these spill trays ideal for catching and preventing oil and chemical spillages. Lightweight for easy transportation and positioning, yet still strong and durable. Spill trays available with or without platform.

Model No:	Dimensions (W x D x H):	Spill Capacity:	Drum Capacity:	Model No:	Dimensions (W x D x H):	Spill Capacity:	Drum Capacity:
D DRP28*	300 x 400 x 150mm	10L	-	H DRP32*	1000 x 600 x 175mm	60L	6 x 25L
E DRP29	300 x 400 x 150mm	10L	-	I DRP33	1000 x 600 x 175mm	60L	6 x 25L
F DRP30*	800 x 400 x 165mm	30L	2 x 25L	J DRP100*	1200 x 800 x 175mm	100L	8 x 25L
G DRP31	800 x 400 x 165mm	30L	2 x 25L	K DRP101	1200 x 800 x 175mm	100L	8 x 25L

*Note Model No's DRP28, DRP30, DRP32, and DRP100 are without platforms.

Useful information - Containment facilities should have sufficient capacity to contain at least 25% of the total volume of the containers being stored, or 110% of the largest container, whichever is the greater.



A TPA02
Ø56mm Trisure Drum Adaptor



B TPA03
Ø64mm US Buttress Drum Adaptor



C TPA04
Ø69mm Mauser Drum Adaptor



D TPA05
Ø58mm Berg Drum Adaptor



E TPA07
Ø61mm DIN 61/31 Drum Adaptor



F TPA09
Ø71mm DIN 71 Drum Adaptor

A-F SEE BELOW

Drum Adaptors

Choose from our extensive range of high quality polypropylene drum adaptors. Manufactured to fit all popular makes of drum closures. All adaptors are fitted with standard 2" BSP thread.

	A	B	C	D	E	F
Model No:	TPA02	TPA03	TPA04	TPA05	TPA07	TPA09
Thread Size:	2" BSP	2" BSP	2" BSP	2" BSP	2" BSP	2" BSP
Thread B Major Diameter:	Ø56mm	Ø64mm	Ø69mm	Ø58mm	Ø61mm	Ø71mm
Thread B Minor Diameter:	Ø51mm	Ø57mm	Ø62mm	Ø55mm	Ø55mm	Ø66mm
Thread B Pitch:	4.5mm	5mm	6mm	3.5mm	6mm	6mm



G TP125
2" BSP Drum Tap
Polyethylene drum tap with 2" BSP thread, fitted with EPT gasket. Features padlock hole, hanging hook for buckets and port for installing a sight glass. Large bore drains drums quickly and easily.



H TP126
3/4" BSP Drum Tap
Polythene constructed drum tap with 3/4" BSP thread.



I TP12
3/4" BSP Lockable Drum Tap
Polythene constructed tap with 3/4" BSP thread and neoprene washer.



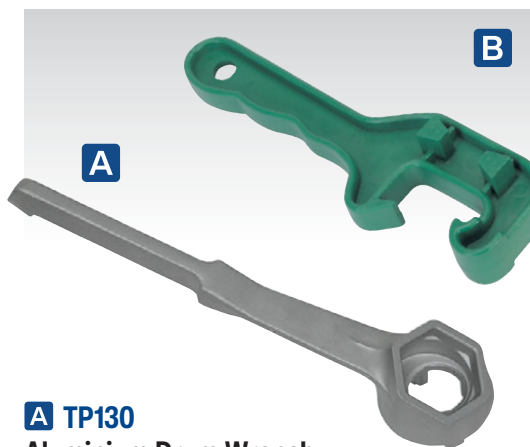
J TP124
1/2" & 3/4" BSP Drum Tap
Brass body and nickel-plated drum tap with hose tail outlet suitable for use with extension hoses. Fitted with 1/2" BSP thread and supplied with 3/4" BSP adaptor. Needs only half turn of handle to open or close tap.



K TP128
3/4" BSP Zinc Die-Cast Lockable Drum Tap
Zinc die-cast, push-pull tap with locking facility to prevent unauthorised access to drum contents. Nitrile seals, suitable for most liquids normally stored in plastic and steel drums. 3/4" BSP Thread.



L TP123
3/4" BSP Auto-Release Lockable Drum Tap
Self-closing safety drum tap with brass plated alloy body. Features built-in flame arrestor for dispensing flammable or non-flammable liquids. Steel handle can be padlocked closed. Fitted with 3/4" BSP thread.



A TP130
Aluminium Drum Wrench

Manufactured from hardened and tempered cast aluminium for increased strength. Designed to fit most 2" BSP and 3/4" BSP drum plugs.

Length: 270mm

B TP122
Drum Wrench

Universal wrench suitable for opening a variety of drums. Made from a tough composite material.

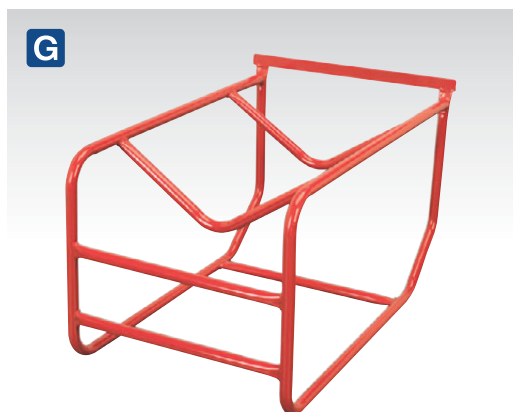
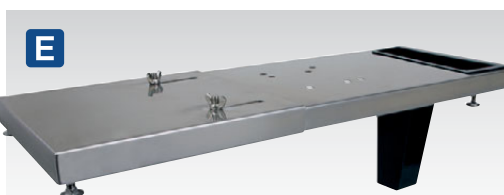
C ADB08
IBC Pump Mounting Bracket

Hanging bracket and fixings to attach Sealey 12V and 230V fluid transfer pumps to 1000L intermediate bulk containers. Supplied with a delivery nozzle holder that can also act as a drip tray to catch any accidental spills. Can be used with most brands of fluid transfer pumps.



E ADB09
Drum Pump Mounting Bracket

Bracket and fixings to attach Sealey 12V and 230V fluid transfer pumps to 205L barrels. Supplied with a delivery nozzle holder that can also act as a drip tray to catch any accidental spills. Can be used with most brands of fluid transfer pumps.



G TP11
205L Drum Stillage

Allows safe storage of 205L drums in the horizontal position for quick dispensing of contents. Radiused frame helps up-end drums.

H TP112
205L Mobile Drum Stillage

Allows safe storage of 205L drums in the horizontal position for quick dispensing of contents. Radiused frame helps up-end drums. Highly manoeuvrable on two heavy-duty rubber tyres and two castors. Fitted with rubber handgrip.



D TP129
Drum Level Indicator

Easy and cost effective method of determining level of fluid in a 205L drum. Fitted with a 3/4" BSP thread which screws directly onto the smaller hole on 205L drums, leaving the 2" BSP thread free for installing pumps. Indicator face is marked from 0-210 litres. Unit is fitted with a water filled polyethylene float allowing the indicator to be used with a variety of fluids. Note: TP129 is not a precise measuring device, unit is for indication purposes only.



F DH02
Mobile 205L Drum Handler

Ideal for manoeuvring, relocating and draining fully loaded drums. Lever handle raises drum in stages with fingertip operated locks. Adjustable for reach/leverage and clamp height. Clips on both sides hold drum secure in vertical or horizontal positions. Drum can be manually adjusted and held at any angle or, if contents need mixing, can be turned end-over-end. Fitted with two smooth-rolling, heavy-duty wheels and one castor with brake. Suitable for 205L drums.





A DH01
205L Hydraulic Drum Truck

Less manual effort required as hydraulic ram clamps drum, then raises it off the ground for simple manoeuvring and relocation. Cradle is fitted with two smooth-rolling, heavy-duty wheels and one castor with brake. Suitable for 205L drums.

Lifting Height:	300mm
Width:	780mm
Drum Size:	205L
Weight:	37.3kg



D TP13
Drum & Barrel Trolley

Rigid steel construction suitable for safe movement and storage of steel and plastic barrels. Cradle fitted with two, smooth-rolling, heavy-duty Ø150mm wheels and one Ø75mm castor. 2-Position handle locks upright or at 45° and features tools for five different drum caps and a metal drum tilting attachment.



B TP205H
205L Drum Dolly with Handle

Transport drums quickly and safely on four large metal castors. Wheels are strategically positioned for even weight distribution and fitted with handle for easy manoeuvrability. Suitable for use with 205L drums.

Maximum Inner Diameter:	Ø605mm
Optional Dolly Only:	TP205



C ST30
205L Drum Handling Trolley

Tubular steel construction with heavy-duty solid rubber tyres. Simple to use, slip the loading lip under the drum and rock the drum over. The curve of the frame allows the drum to roll the trolley onto its wheels ready for transit. Drum can be secured using chain supplied. Fitted with rubber hand grips. Heavier loads may require two person operation.



E ST35
205L Drum Trolley/Stillage

Heavy-duty tubular steel construction drum trolley. Ideal for moving full 205L drums easily and safely. Features spring loaded mechanism ensuring stability and control whilst under load. Fitted with four wheels for moving easily over uneven surfaces. Features bracing strap to ensure load is secure. Unit can lay flat to enable use as a stillage.

Size (W x D x H):	550 x 560 x 1600mm
-------------------	--------------------



Hydraulic



A DH03
205L Drum Hydraulic Truck & Van Loader

Ideal for loading and unloading barrel bunds, vans and general drum handling when forklift is not available. Suitable for 205L drums. Foot operated hydraulics, side handles and smooth-rolling wheels aid handling and manoeuvrability.

Maximum Drum Height:	1610mm
Leg Height:	65mm
Leg Length:	590mm
Width Inside Legs:	700mm
Maximum Width:	800mm
Overall Maximum Height:	1950mm
Overall Minimum Height:	1710mm
Weight:	67kg



B DG06
Gator Grip Forklift
205L Drum Grab - 400kg Capacity

Manufactured from heavy-duty steel. Fitted with automatic grip lock to ensure maximum grip is maintained over rough terrain. Features suspension system to ensure safety. Suitable for use with 205L steel drums. Unit attaches to most forklifts and is secured using two heavy-duty fixing bolts.

Capacity:	400kg
Drum Size:	205L
Fork Opening:	560mm
Overall Size (W x D x H):	710 x 660 x 730mm
Weight:	60kg



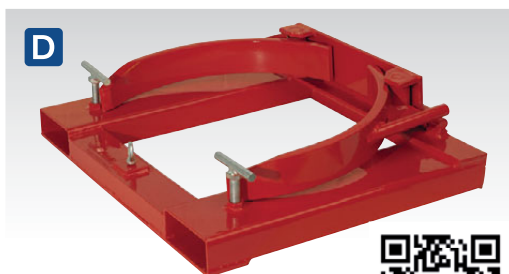
C DG01
205L Drum Grab - 350kg Capacity

Lifts open or closed, loaded, steel drums with the aid of an overhead hoist. Keeps drum in vertical position reducing spillage. Heavy-duty steel construction. Suitable for use with 205L drums.

Capacity:	350kg
Drum Size:	205L
Weight:	9kg



For our range of cranes, see pages 316 to 319.



D DG02
205L Drum Clamp for Forklift
350kg Capacity

Simple mechanical feature allows drums to be picked up, relocated and released without leaving the driving position. Secures tightly to forklift arms using hand screws. Heavy-duty steel construction. Suitable for use with 205L drums.

Capacity:	350kg
Fork Opening:	623mm
Drum Size:	205L
Weight:	45kg



E DG04
205L Drum Grab - 500kg Capacity

Manufactured from heavy-duty steel with welded gripping hooks. Suitable for lifting 205L vertical steel drums with an overhead hoist. Hooks fit under the lip of the drum to provide a secure and stable lift.

Capacity:	500kg
Drum Size:	205L
Weight:	5kg

A 3L



B 9L



C 27L



A-C SEE BELOW

Ultrasonic Cleaning Tanks

Perfect for cleaning all small hard parts. Widely used by jewellers, watch, bicycle, car and motorcycle repairers, plus precision and model engineers. An ultrasonic cleaner that achieves great results on delicate items such as watch parts, PCB boards and electrical components, as well as mechanical items such as carburettors, spark plugs and injectors. The Degas function purifies the liquid in the tank to speed up the cleaning process. Using ultrasonic wave vibration, the intense cleaning action of the microscopic bubbles can penetrate the most inaccessible parts to remove dirt and grime. Achieve a pristine condition without any damage or wear to item. Made from durable stainless steel and fitted with a drain tap for easy emptying and mesh basket to keep smaller components together. Features soft cleaning mode enabling you to clean your more fragile items.

	A	B	C
Model No:	SCT03	SCT09	SCT27
Minimum Working Capacity:	2L	5L	14L
Maximum Working Capacity:	3L	9L	27L
Supply/Plug Type:	230V/3-Pin	230V/3-Pin	230V/3-Pin
Power Supply Cable Length:	1.4m	1.4m	1.4m
Motor Power:	120W	200W	500W
Overall Dimensions (W x D x H):	265 x 165 x 225mm	330 x 270 x 310mm	550 x 330 x 360mm
Weight:	3.34kg	8.56kg	16kg

A



D



15L

D SM21

15L Bench/Portable Parts Cleaning Tank

One-piece tank with triple baked finish and fully sealed magnetic drive pump unit with replaceable impeller. Smaller capacity tank is suitable for benchtop mounting. Recirculated fluid is filtered before entering the pump and is directed over the workpiece with a flexible metal delivery nozzle. Includes removable shelf.

Overall Height:	225mm
Tank Height:	210mm
Tank Depth:	290mm
Tank Width:	395mm
Pump Output/hr:	90L
Motor Power:	26W
Supply/Plug Type:	230V/3-Pin
Power Supply Cable Length:	1.5m
Weight:	7kg
Minimum Working Capacity:	7L
Maximum Working Capacity:	15L



16L

E SM22

16L Mobile Parts Cleaning Tank with Brush

Blow-moulded parts cleaning tank with brush. Lightweight and mobile unit suitable for benchtop mounting. Fluid recirculated through filter and directed onto workpiece through long reach hose and brush. For use with soluble cleaning agents only.

Overall Dims. (W x D x H):	606 x 460 x 250mm
Tank Dims. (W x D x H):	520 x 350 x 75mm
Pump Output/hr:	100L
Motor Power:	16W
Supply/Plug Type:	230V/3-Pin
Power Supply Cable Length:	1m
Weight:	5.1kg
Minimum Working Capacity:	7.5L
Maximum Working Capacity:	16L

F



F SM201

Parts Cleaning Brush with Hose

Fits onto the flexible spout of Sealey parts cleaning tanks (except Model No. SM21) and allows a stream of fluid to pass through the bristles for extra cleaning power. Also suitable for other makes of tank - check with your distributor for compatibility. To use with Model No. SM40 order Model No. SM201/A (see **H**).

G BAPC/1

Parts Cleaning Brush

Double end cleaning brush with solvent resistant bristles. Suitable for all types of water-soluble degreasing solvents. Also excellent for applying cutting oils when drilling and machining.

Length:	300mm
----------------	-------

I



Magnetic

I SMS011

Magnetic Stainless Steel Parts Strainer

Magnetic stainless steel parts strainer, a great solution for storing nuts, bolts, parts and tools whilst in the process of cleaning. Corrosion free, lightweight design with magnetic base. Ideal for use with most parts cleaning systems.

Diameter:	Ø270mm
------------------	--------



A
50L

A SM19
50L Workshop Parts Cleaning Tank

Heavy-duty one-piece tank. Fully sealed electric motor with magnetic drive pump unit. Lid features self-latching fusible link which automatically snaps lid shut in the event of a fire. Includes removable shelf and small parts basket. Flexible metal nozzle directs solvent over work. Supplied with workshop stand with integral storage shelf.

Overall Height:	960mm
Tank Height:	265mm
Tank Depth:	540mm
Tank Width:	775mm
Pump Output/hr:	200L
Motor Power:	13W
Supply/Plug Type:	230V/3-Pin
Power Supply Cable Length:	1.6m
Weight:	24.2kg
Minimum Working Capacity:	40L
Maximum Working Capacity:	50L

D SM224
50L Air Operated Mobile Parts Cleaning Tank with 65L Reservoir

Steel fabricated 65L reservoir and 50L one-piece tank. Mobile unit with two castors and two fixed wheels, can easily be taken to work area. Air operated unit can be charged and used remotely without air supply for a limited period. Includes brush for cleaning workpiece and air blow gun for fast drying. Reservoir fitted with fluid level indicator and drain tap. Supplied with removable shelf and tray. Lid fitted with fusible link which automatically snaps lid shut in the event of a fire.

Overall Height:	1040mm
Tank Height:	180mm
Tank Depth:	485mm
Tank Width:	775mm
Pump Output/hr:	140L
Supply:	Air
Operating Pressure:	40-60psi
Air Consumption:	6cfm
Air Inlet:	1/4" BSP
Weight:	39.6kg
Maximum Working Capacity:	50L



B
50L

B SM28
50L Mobile Parts Cleaning Tank

Heavy-duty one-piece tank. Fully sealed electric motor with magnetic drive pump unit. Lid features self-latching fusible link which automatically snaps lid shut in the event of a fire. Includes removable shelf and small parts basket. Flexible metal nozzle directs solvent over work. Supplied with workshop stand with integral storage shelf.

Overall Height:	960mm
Tank Height:	265mm
Tank Depth:	540mm
Tank Width:	775mm
Pump Output/hr:	200L
Motor Power:	13W
Supply/Plug Type:	230V/3-Pin
Power Supply Cable Length:	1.6m
Weight:	26.3kg
Minimum Working Capacity:	40L
Maximum Working Capacity:	50L



D
50L
AIR Operated



C
50L
Turbo Action

C SM20
50L Workshop Parts Cleaning Tank with Turbo Feature

Heavy-duty one-piece steel tank. Triple baked enamel finish and fitted with fully sealed, magnetic drive pump unit. Fluid recirculated through replaceable filter element and directed onto workpiece through flexible metal delivery nozzle. Turbo agitation, bubbles air through fluid to reduce soaking time and requires workshop air supply in addition to 230V electrical supply. Can be used without turbo agitation if desired. Lid of tank fitted with fusible link hinge which automatically snaps lid shut in the event of a fire. Supplied with removable shelf and parts basket.

Overall Height:	880mm
Tank Height:	260mm
Tank Depth:	540mm
Tank Width:	775mm
Pump Output/hr:	200L
Motor Power:	25W
Supply/Plug Type:	230V/3-Pin
Power Supply Cable Length:	1.6m
Weight:	23.62kg
Minimum Working Capacity:	40L
Maximum Working Capacity:	50L





A
80L

A SM40
80L Parts Cleaning Tank

One-piece tank construction with triple baked enamel finish and fitted with fully sealed, magnetic drive pump unit. Fluid recirculated through replaceable filter element and directed onto workpiece through flexible metal delivery nozzle. Large capacity tank is suitable for cleaning larger engine components with up to 80L maximum working capacity. Lid of tank fitted with fusible link which automatically snaps lid shut in the event of a fire. Supplied with removable shelf and parts basket.

Overall Height:	890mm
Tank Height:	270mm
Tank Depth:	520mm
Tank Width:	1090mm
Pump Output/hr:	200L
Motor Power:	25W
Supply/Plug Type:	230V/3-Pin
Power Supply Cable Length:	1.6m
Weight:	42.4kg
Minimum Working Capacity:	57L
Maximum Working Capacity:	80L



B
136L
DEEP TANK

B SM40D
136L Extra-Deep Parts Cleaning Tank

Heavy-duty one-piece steel tank. Extra-deep tank is suitable for soaking and cleaning awkwardly shaped components. Fitted with fully sealed, magnetic drive pump unit. Lid of tank fitted with fusible link which automatically snaps lid shut in the event of a fire. Supplied with removable shelf and parts basket.

Overall Height:	1030mm
Tank Height:	400mm
Tank Depth:	560mm
Tank Width:	900mm
Pump Output/hr:	300-480L
Motor Power:	15W
Supply/Plug Type:	230V/3-Pin
Power Supply Cable Length:	1.6m
Weight:	43.4kg
Minimum Working Capacity:	91L
Maximum Working Capacity:	136L



C
55L

C SM22
55L Air Operated Parts Cleaning Tank

Heavy-duty welded steel tank. Fitted with fully sealed and air operated pump unit. Considered safe for use in hazardous environments due to the absence of electricity. Lid of tank fitted with fusible link which automatically snaps lid shut in the event of a fire. Supplied with removable shelf and parts basket.

AIR Operated

Overall Height:	890mm
Tank Height:	270mm
Tank Depth:	520mm
Tank Width:	750mm
Pump Output/hr:	205L
Supply:	Air
Operating Pressure:	90psi
Air Consumption:	6cfm
Air Inlet:	1/4" BSP
Weight:	31kg
Minimum Working Capacity:	48L
Maximum Working Capacity:	55L



D
85L

D SM223
85L Air Operated Parts Cleaning Tank with Turbo Feature

Heavy-duty one-piece steel tank. Fitted with fully sealed and air operated pump unit. Turbo agitation, bubbles air through fluid to reduce soaking time and requires workshop air supply. Extra-large capacity tank is suitable for cleaning larger engine components. Includes air blow gun for fast drying of workpiece. Lid of tank fitted with fusible link which automatically snaps lid shut in the event of a fire. Supplied with removable shelf and parts basket.

Overall Height:	890mm
Tank Height:	265mm
Tank Depth:	510mm
Tank Width:	1070mm
Pump Output/hr:	300L
Supply:	Air
Operating Pressure:	65-125psi
Air Consumption:	8-10cfm
Air Inlet:	1/4" BSP
Weight:	41kg
Minimum Working Capacity:	55L
Maximum Working Capacity:	85L

Turbo Action **AIR Operated**



For our full range of Degreasing Solvents, see page 1135.