

# MOTORCYCLE TOOLS

 [back to Section List](#)



## Chain & Disc Locks

365

## Mini Tractor Lifts

343-344

## Motorcycle & Trial Bike Stands

339

## Motorcycle Covers

362-363

## Motorcycle Dollies

346

## Motorcycle Lifts

339-345

## Motorcycle Paddock Stands

338-339

## Motorcycle Service Tools

348-359

## Motorcycle Storage Accessories

361

## Motorcycle Tyre Tools

366-367

## Motorcycle Wheel Chocks

347

## Tie Downs

364

## Motorcycle Loading Ramps

360



**A NEW**

**A FPS1KD**  
**Front Fork Paddock Stand**

Allows easy removal and cleaning of front wheel. Features width adjustment from 180 to 255mm, making it suitable for almost all motorbikes. Design ensures rim and tyre protection at all times. Please note all front paddock stands need to be used in conjunction with a suitable rear stand to ensure bike stability (Model No. RPS2KD, see **B**). Delivered in knock-down form to reduce freight costs, some self-assembly required.

Minimum/Maximum Width: 180-255mm



**B NEW**

**B RPS2KD**  
**Universal Rear Paddock Stand with Rubber Supports**

Lifts and stabilizes any dual swing arm motorbike quickly and easily. Fitted with width and angle adjustable rubber support pads. Rubber supports mounted on heavy-duty box section for continuous professional use. Bobbin Supports available as an optional extra - Model No. RPS1BS, see **E**. Delivered in knock-down form to reduce freight costs, some self-assembly required.

Minimum/Maximum Width: 220-350mm



**C**

**C RPS2**  
**Universal Rear Paddock Stand with Rubber Supports**

Lifts and stabilises any dual swing arm motorbike quickly and easily. Fitted with width and angle adjustable rubber support pads. Rubber supports mounted on heavy-duty box section for continuous professional use. Bobbin Supports available as an optional extra - Model No. RPS1BS, see **E**.

Minimum/Maximum Width: 245-320mm



**D NEW**

**D FPS1MD**  
**360° Universal Floating Front Paddock Stand**

Triple castor wheel design allows a stable multi-directional movement of motorcycle once lifted. Features width adjustment from 185 to 265mm, making it suitable for almost all motorbikes. Design ensures rim and tyre protection at all times. Once the bike is supported, allows easy removal and cleaning of front wheel. Please note: All front paddock stands need to be used in conjunction with a suitable rear stand to ensure bike stability (Model No's RPS2, see **C**, or RPS2MD, see **G**, for full floating movement).

Minimum/Maximum Width: 185-265mm



**E**

**E RPS1BS**  
**Bobbin Supports for RPS2 & RPS2KD**

Optional Bobbin Support for Model No. RPS2 and RPS2KD. Designed to give extra support and added stability once rear axle has been located and raised. Yellow phosphate finish for added corrosion resistance.

Quantity: 2  
Length: 105mm



**F**

**F FPSFC**  
**Fork Cradle Supports for Front Paddock Stands**

Optional fork cradle support for front paddock stands. Designed to cradle and lift the front forks of a motorcycle for cleaning and storage. Yellow phosphate finish for added corrosion resistance. For safety always ensure that the rear of the bike is supported securely prior to lifting the front end of the motorcycle.

Quantity: 2  
Length: 190mm



**G NEW**

**G RPS2MD**  
**360° Universal Floating Rear Paddock Stand**

Triple castor wheel design allows a stable multi-directional movement of motorcycle once lifted. Features width adjustment from 300 to 375mm, making it suitable for almost all motorbikes. Design ensures rim and tyre protection at all times. Once the bike is supported, allows easy removal and cleaning of rear wheel. For full floating movement use in conjunction with FPS1MD, see **D**.

Minimum/Maximum Width: 300-375mm



**G**

**D**



**A MPS2**  
**Two Arm Centre Stand**

Quickly and safely lifts and stabilises front or back of a motorcycle with a traditional style double cradle frame design that has no engine, transmission or exhaust protrusions. Features height adjustment and soft PVC sheath for protection to underside of bike. Design of stand allows easy wheel maintenance and removal of front or rear wheel.

<b>Minimum/Maximum Height:</b>	200-275mm
--------------------------------	-----------



**B MPS8**  
**150kg Quick Lift Off-Road/Trials Bike Stand**

Powder coated pressed steel frame, to ensure strength and durability. Ideal for use with off-road/trials bikes to easily lift the bike when needing to perform maintenance, servicing or cleaning. Simple, one foot, step-and-lift mechanism means the bike can be instantly raised in one motion. For added safety, features an 'over centre' locking toggle linkage to mechanically lock the lift at full height to prevent accidental lowering. Also fitted with hydraulic dampener for controlled descent.

<b>Capacity:</b>	150kg
<b>Minimum Height:</b>	300mm
<b>Maximum Height:</b>	410mm



**C FPS5**  
**Front Headstock Stand**

Strong tubular frame supplied with a range of pins to fit the most common headstock sizes. Once in place, access to all mechanical components at the front of the bike is made easy. Stand folds down for compact storage when not in use. Supplied with width and angle adjustable rubber support pads to quickly and easily use as rear support stand.

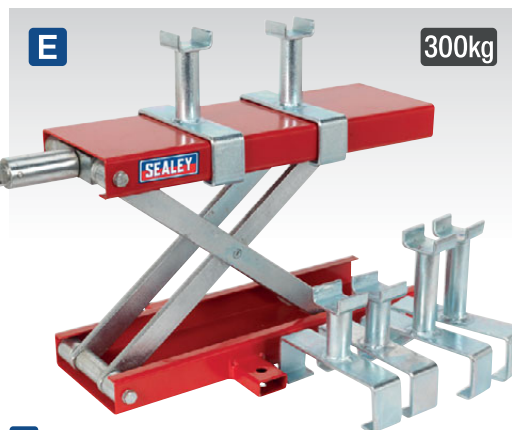
<b>Headstock Height:</b>	830-925mm
<b>Headstock Pin Sizes:</b>	13, 15, 16.5, 17, 18mm



**D MC5908**  
**450kg Scissor Stand for Motorcycles**

Scissor support stand suitable for use either on a motorcycle lift or on the floor. Fitted with ball-bearing rollers for smooth lifting and lowering. Raise with sliding T-bar. Supplied with non-slip platform cover for added load security.

<b>Capacity:</b>	450kg
<b>Minimum Height:</b>	85mm
<b>Maximum Height:</b>	365mm



**E MC5905**  
**300kg Scissor Stand for Motorcycles**

Scissor support stand suitable for use either on a motorcycle lift or on the floor. Supplied with sliding pin carriers and three pairs of support pins. Raise with a 22mm spanner/socket.

<b>Capacity:</b>	300kg
<b>Low Pin Support Minimum Height:</b>	180mm
<b>Medium Pin Support Minimum Height:</b>	200mm
<b>High Pin Support Minimum Height:</b>	220mm
<b>Maximum Height:</b>	335mm



**F SPL01**  
**Fast Lock Tie Down System for Motocross Bikes**

Securely holds your motocross bike on to a trailer or van. With the Fast Lock system, no wheel chock or ratchet straps are required. Provided with mounting plates and quick release latches, allowing for fast installation and removal of the clamp. Each mounting plate has a D-ring creating additional anchor points to the trailer floor.



**A MC135**  
**135kg Hydraulic Lift**  
**Off-Road/Trials Bike/Motorcycle**

All steel scissor type construction with foot operation and integral hydraulic pump. Unique foot design and safety pins allow use with off-road/trials bikes. Features three locking heights. Support platform with rubber top protects paintwork on bike.

Capacity:	135kg
Minimum Height:	355mm
Maximum Height:	895mm
Table Width:	350mm
Table Length:	410mm



**C MC480**  
**680kg Hydraulic**  
**Motorcycle & Quadbike Lift**

Heavy steel construction with bottle jack style power unit. Lifting arms suitable for lifting bikes with a suitable structure, such as quads, all terrain vehicles, trikes and transmissions. Features mechanical safety lock to prevent inadvertent lowering and stabiliser feet for added lifting control. Mounted on two fixed wheels and two castors for manoeuvrability.

Capacity:	680kg
Minimum Height:	120mm
Maximum Height:	400mm
Weight:	27kg



**B MC4500**  
**500kg Scissor Motorcycle Lift with Frame Supports**

Steel construction with bottle jack style hydraulic unit. Lifting arms suitable for bikes with cradle frames, quads, all-terrain vehicles, trikes and vehicle transmissions. Features two mechanical safety locks, lockable in 4-positions, for supporting the motorcycle over extended periods. Mounted on two fixed wheels and two double castors for manoeuvrability. Can be used with or without the supplied frame supports. Space-saving design maximizes garage working area. With a low minimum height of 110mm (200mm with frame supports), it will lift and support the bike through to a maximum height of 400mm (508mm with frame supports). Unlike most other motorcycle lifts, it is possible to remove both wheels, front forks, steering assembly, rear swing arm and suspension units as well as the engine. Can be used anywhere with a hard level floor, making this suitable for mobile motorcycle mechanics. Ideal for use with the Sealey range of wheel chocks to assist supporting the motorcycle, whilst adjusting the frame supports and securing to the lift.

Capacity:	500kg
Minimum/Maximum Lift Height (without Frame Supports):	110-400mm
Minimum/Maximum Lift Height (with Frame Supports):	200-508mm
Maximum Frame Dimensions (W x D):	680 x 360mm



**D MCW360**  
**360kg Motorcycle Portable Folding Workbench/Pit Table**

Lightweight, folding design with wheels make this workbench mobile and allows compact storage where workshop space is limited. With a working height of 455mm, it is ideal for servicing/maintenance. Additionally the loading ramp doubles as a convenient workshop stool. Suitable for professional workshops, mobile mechanics, enthusiasts, track days or as a display table in showrooms.

Maximum Load Capacity:	360kg
Maximum Height:	455mm
Platform Width/Length:	600 x 2200mm
Ramp Width/Length:	300 x 1340mm
Folded Dimensions (L x W x D):	1100 x 600 x 150mm
Weight:	38kg



**A**



**A MCL500**

**450kg Single Post Hydraulic Motorcycle Lift**

Space-saving design maximizes garage working area. With a low minimum height of 65mm (without frame supports), it will lift and support the bike through to a maximum height of 740mm (840mm with frame supports). Lockable in 2-positions for supporting the motorcycle over extended periods. Unlike most other motorcycle lifts, it is possible to remove both wheels, front forks, steering assembly, rear swing arm and suspension units as well as the engine. This lift benefits from being portable, so can be used anywhere with a hard level floor, making it suitable for mobile motorcycle mechanics. Ideal for use with the Sealey range of wheel chocks to assist supporting the motorcycle, whilst adjusting the frame supports and securing to the lift.

Capacity:	450kg
Minimum/Maximum Lift Height (without Frame Supports):	65-740mm
Minimum/Maximum Lift Height (with Frame Supports):	165-840mm
Frame Height:	920mm
Maximum Frame Width:	980mm
Weight:	49.9kg



450kg

Hydraulic

**B**



450kg

Hydraulic

Easy Store



**B MC550**

**450kg Hydraulic Motorcycle Lift**

All steel construction with foot operated, integral hydraulic pump and ram assembly. Fitted with platform safety lock device to prevent accidental lowering. Bike fixed by front wheel clamp, in addition, four eyelets allow tie downs to be used for added stability. Fitted with a full width loading ramp. Also has a 500mm removable rear extension to assist with the removal of the rear wheel. Can be stored in an upright position.

Capacity:	450kg
Minimum/Maximum Height:	205-750mm
Platform Width/Length:	333/2060mm
Overall Width/Length:	800/2900mm
Weight:	75kg

## A MC365

### 365kg Hydraulic Motorcycle Lift

All steel construction with foot operated, integral hydraulic pump and ram assembly. Fitted with safety lock device to fix platform at three working heights of 500, 640 and 760mm to prevent accidental lowering. Suitable for small to medium capacity motorcycles with a centre-stand. Support platform fitted with full width loading ramp. Base assembly fitted with transport wheels and lock-downs to prevent lift from moving during use.

Capacity:	365kg
Minimum/Maximum Height:	220-760mm
Platform Width/Length:	480/2215mm
Maximum Load Length:	1350mm



## B MC454

### 450kg Hydraulic Motorcycle Lift

All steel construction with foot operated, integral hydraulic pump and ram assembly. Fitted with safety lock device to fix platform at three working heights of 405, 555 and 660mm to prevent accidental lowering. Suitable for use with centre stand motorcycles or with paddock stand. Support platform fitted with full width loading ramp. Base assembly fitted with transport wheels and lock-downs to prevent lift from moving during use.

Capacity:	450kg
Minimum/Maximum Height:	195-660mm
Platform Width/Length:	660/2515mm
Maximum Load Length:	1825mm

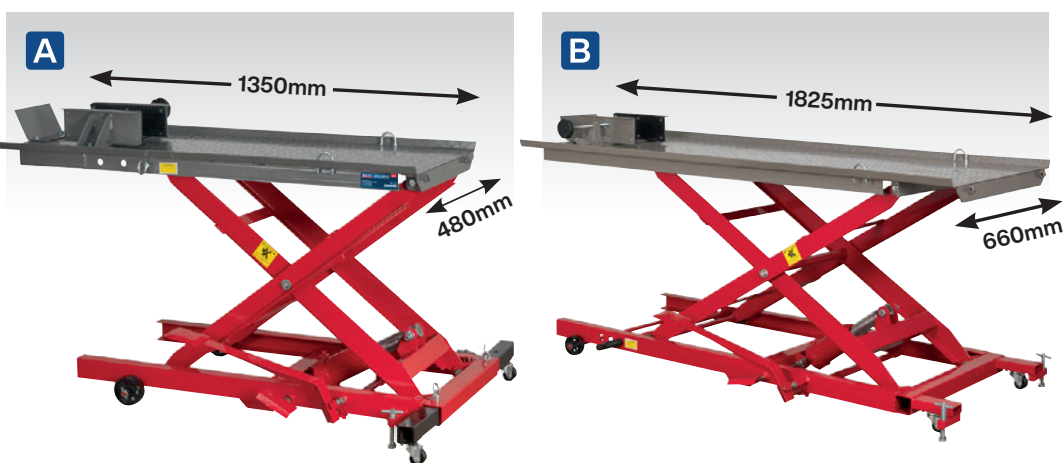


## C MC401

### 454kg Hydraulic Motorcycle Lift

All steel construction with heavy-duty, foot operated, integral hydraulic pump and ram assembly. Fitted with platform safety lock device to fix at two working heights of 490 and 710mm to prevent accidental lowering. Sliding panel platform and front wheel clamp assist removal of rear motorcycle wheel. Support platform fitted with full width loading ramp. Base assembly fitted with transport wheels and lock-downs to prevent lift moving during use. Suitable for use with centre-stand motorcycles or with paddock stand.

Capacity:	454kg
Minimum/Maximum Height:	190-710mm
Platform Width/Length:	690/2200mm



## D WCR02

### Motorcycle Roll-in Wheel Clamp Bolt Down

See page 344 for more information.



**A MC401A**

**454kg Air/Hydraulic Motorcycle Lift**

All steel construction with air pump or foot pedal for manual operation. Integral hydraulic pump and air motor assembly. Air Consumption 7.06cfm. Fitted with platform safety lock device to fix platform at two working heights of 490 and 710mm to prevent accidental lowering. Front wheel clamp for stability and sliding panel for easy rear wheel removal. Support platform fitted with full width loading ramp. Base assembly fitted with transport wheels and lock-downs to prevent lift from moving during use. Suitable for use with centre-stand motorcycles or with paddock stand.

Capacity:	454kg
Minimum/Maximum Height:	190-710mm
Platform Width/Length:	690/2200mm

**B MC680A**

**680kg Air/Hydraulic Motorcycle Lift**

All steel construction with both hydraulic pump and air motor assembly. Combined air and foot pump separate from main lift for choice of operation. Air Consumption 7.06cfm. Ramp and platform made with chequer plate surface to ease loading and positioning of motorcycle. Supplied with motorcycle front wheel locking attachment, securing vehicle to provide easy maintenance access. Fitted with multi-position safety lock to prevent accidental lowering. Suitable for use with centre-stand motorcycles or with paddock stand.

Capacity:	680kg
Minimum/Maximum Height:	190-790mm
Platform Width/Length:	710/2000mm

**C MT680**

**680kg Air/Hydraulic Mini Tractor/Quad/Motorcycle Lift**

All steel construction with heavy-duty hydraulic ram and air pump. Integral hydraulic pump and air motor assembly. Supplied with separate, foot operated, hydraulic pump and reservoir unit. Features two additional side platforms for extra width. Ramp and platform made with chequer plate surface to ease loading and positioning of mini tractor/quad. Supplied with motorcycle front wheel locking attachment, securing vehicle to provide easy maintenance access. Fitted with multi-position safety lock to prevent accidental lowering. Suitable for use with centre-stand motorcycles or with paddock stand.

Capacity:	680kg
Minimum/Maximum Height:	190-790mm
Standard/Maximum Width:	710/1220mm
Length:	2000mm



## A MC680E

### 680kg Heavy-Duty Motorcycle Lift Electro/Hydraulic

All steel construction with a 680kg capacity powered by 230V Electro/Hydraulic lifting system for simple, fast operation. Heavy-duty ramp and platform with removable rear access panel to aid with wheel removal. Supplied with motorcycle front wheel locking attachment for tyre widths between 75-340mm to assist in securing the vehicle. Fitted with multi-position safety lock to prevent accidental lowering. Suitable for use with centre-stand motorcycles or with a rear paddock stand. Can be easily converted to a mini tractor or quadbike lift with the additional side ramps (Model No. MC680EXK, see B).

Capacity:	680kg
Minimum/Maximum Height:	210-1000mm
Platform Width/Length:	750/2000mm
Supply/Plug Type:	230V/3-Pin
Power Supply Cable Length:	0.5m



## B MC680EXK

### 4pc Extension Side Ramps for MC680E

All steel construction 4-piece ramp extension kit for Model No. MC680E Motorcycle Lift. The kit consists of two lift table extensions and two additional loading ramps. This converts motorcycle lift into a 2000mm x 1260mm 680kg mini tractor/quad bike or ATV lift. Fitted with automatic anti-roll off devices.

Length:	2000mm
Ramp Width (each):	225mm

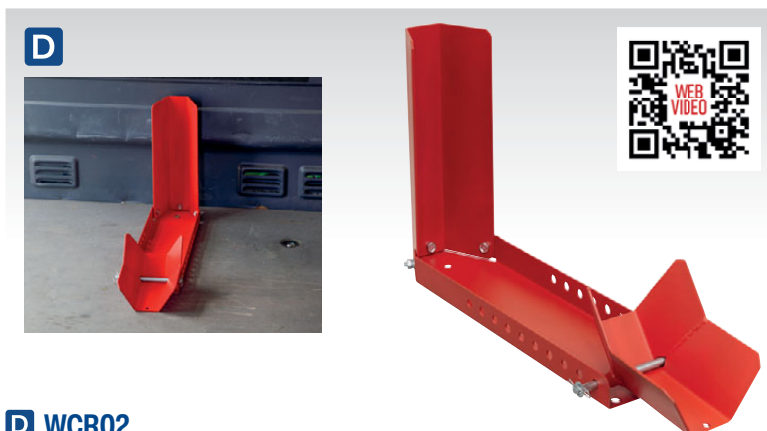


## C WCR01

### Wheel Clamp Upgrade for Motorcycle Lifts

Greatly increases stability of the motorcycle by clamping the bottom and front of the tyre, enabling easier securing of the motorcycle to the lift. Suitable for most motorcycle lifts. Some modification may be required.

Applications:	MC365, MC401, MC401A, MC454, MCW360
---------------	-------------------------------------



## D WCR02

### Motorcycle Roll-in Wheel Clamp - Bolt Down

Increases the stability of the motorcycle by clamping the bottom and front of the tyre. Features a pivot clamp which locks the front wheel securely by the motorcycle weight. Suitable for fitting on trailers, in vans or to motorcycle lifts (requires suitable fixings). Fully adjustable to fit wheels Ø15"-21" (380-535mm). Minimum/Maximum Tyre Width: 50-130mm. Please note: Motorcycle must also be secured using tie down straps. Fittings not included.

Applications:	MC365, MC401, MC401A, MC454, MCW360
---------------	-------------------------------------





**A MC454E**

**450kg Motorcycle Lift - 12V Electro/Hydraulic**

All steel construction. 12V Electro/Hydraulic lifting system for simple, fast operation. Can be powered by a 12V vehicle battery or a Roadstart® unit. Support platform fitted with full width loading ramp. Supplied with motorcycle front wheel locking attachment for tyre widths up to 135mm to assist in securing the vehicle. Fitted with multi-position safety lock to prevent accidental lowering. Suitable for use in a garage or shed without the need of mains 230V electricity supply or for a mobile mechanic or race pits. Designed for use with centre or side stand motorcycles or with a rear paddock stand.

Supply:	12V
Capacity:	450kg
Minimum/Maximum Height:	205-760mm
Platform Width/Length:	650/1828mm

**B NEW 12V**



**B RoadStart® 12V Lithium-ion Jump Starter Power Packs**

For more information, please see page 629.



**C TC965**

**Motorcycle & Small Hub Tyre Changer**

Manual type tyre changer suitable for a wide variety of tyres and wheels including those fitted to motorcycles, ATVs, go-karts and golf buggies. Works on bearing or hub centred wheels and is supplied with two centre posts. Includes manual bead breaker and supplied with tyre bar for mounting and de-mounting. Fast and simple operation. To prevent damage to the rims of alloy wheels, use optional Tyre Bar, Model No. TC963.

Minimum Wheel Size:	Ø102mm
Maximum Wheel Size:	Ø524mm(21")
Centre Post Sizes:	Ø12, 16, 19, 24mm
Optional Tyre Bar for Aluminium Wheels:	TC963

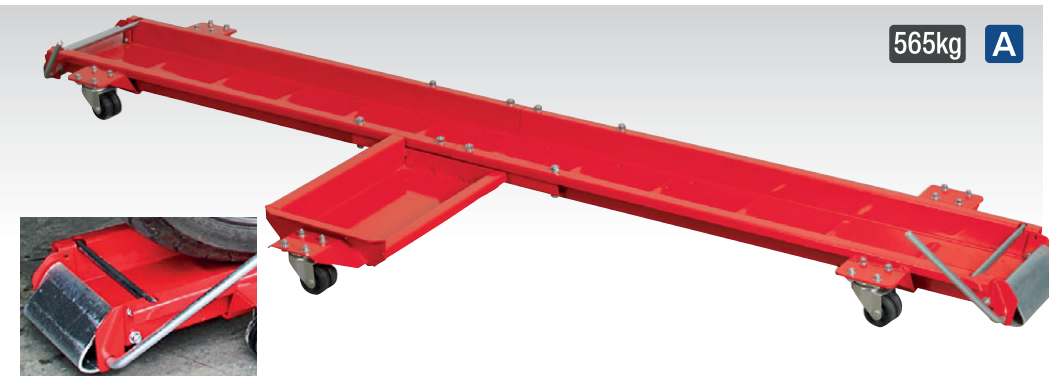
**D WTS01**

**Motorcycle & Bicycle Wheel Balancer & Truing Stand**

Professional design ideal for the workshop technician or competent DIY enthusiast. Enables the accurate balancing after tyre fitting and truing of rebuilt, warped or buckled spoke wheels. Includes two cones and spindle for precise, easy alignment and balancing. Uses gravity to find the heavy point of a wheel and tyre. Also has threaded centring stabilizer bolts to securely hold the wheel whilst truing the rim.

Maximum Cone Size Balancer:	Ø37.5mm
Centre Balancer Spindle to Base:	585mm
Maximum Cone Size Truing Axle:	Ø37mm
Centre Truing Axle to Base:	445mm





565kg A



**A MS063**

**Side Stand Type Motorcycle Dolly**

Motorcycle dolly holds a single motorcycle with a side stand, weighing up to 565kg. Easy to manoeuvre around the workshop or garage. Front and rear lever operated wedge gates allow for easy loading and unloading to the loading track. Includes a 5-position side stand platform to fit varied length side stand, front/rear steel pins to keep the motorcycle on the dolly during moving, and smooth-rolling dual castor wheels.

Capacity:	565kg
Loading Track Dimensions (L x W x H):	2000 x 200 x 50mm
Overall Dimensions (L x W x H):	2120 x 770 x 90mm



**B**  
**NEW**

500kg

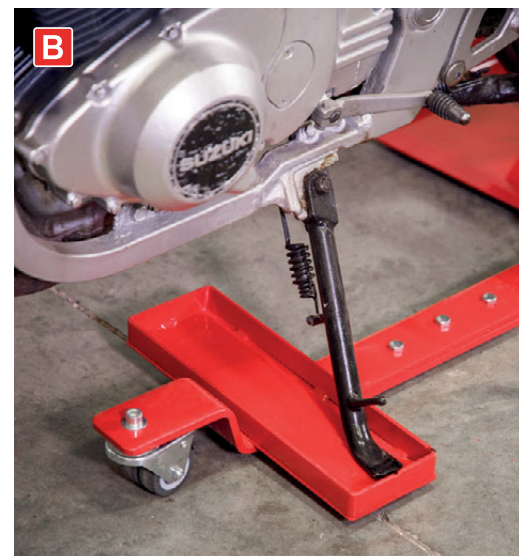


**B MS0630**

**Side Stand Type Rear Wheel Motorcycle Dolly**

Motorcycle dolly holds a single motorcycle with a side stand, weighing up to 500kg with weight being dispersed between front and back wheels. Easy to manoeuvre around the workshop or garage. Front wheel stays in contact with the ground allowing the motorcycle to be steered into the desired position. Pivoting feature allows flexibility in side stand designs. Side stand holder can be adjusted to cater to the majority of motorcycles.

Capacity:	300kg
Loading Track Dimensions (L x W x H):	550 x 250mm
Overall Dimensions (L x W x H):	1300 x 650mm



**C**

220kg

**C MS0651**

**Motorcycle Centre-Stand Moving Dolly**

This motorcycle moving dolly can be used to manoeuvre motorcycles (maximum 300kg dispersed vehicle weight) with centre-stands and is perfect for places where space is restricted. The centre-stand locates on the 4mm thick hardened steel-plate and the 360° castors allow the bike to be moved in any direction. Features a foot/hand operated built-in brake mechanism which is ideal for workshop, showroom and home garage use.

Capacity:	220kg
-----------	-------



**C**



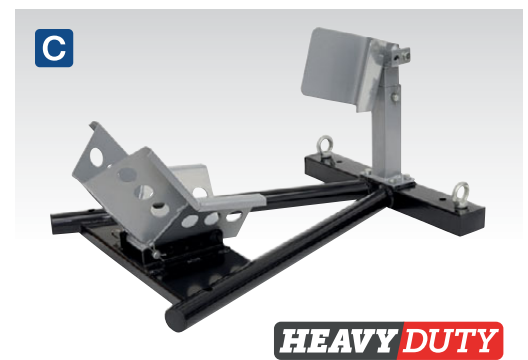
**A WCT02**  
**170mm Motorcycle Wheel Chock**  
 Black powder coated heavy-duty tubular frame. Pre-drilled holes allow chocks to be either bolted to the floor or a trailer to prevent movement and maintain balance. Suitable for motorcycles with tyres up to 170mm wide.

Minimum/Maximum Tyre Width:	50-170mm
-----------------------------	----------



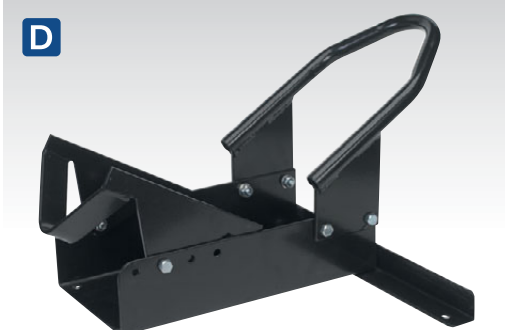
**B SEE BELOW**  
**Motorcycle Wheel Chocks**  
 Black powder coated heavy-duty tubular frame. Pre-drilled holes allow chocks to be bolted to either the floor or a trailer to prevent movement while being worked on or transported.

Model No:	Maximum Tyre Width:
WC06	95mm
WC07	140mm
WC08	165mm



**C FPS7**  
**Heavy-Duty Motorcycle Front Wheel Chock**  
 Tubular wheel chock supports the front wheel of the motorcycle when in transit or storage. Fully adjustable to fit wheels Ø15"-21" (380-535mm). Features a pivot clamp which locks the front wheel securely by the motorcycle weight. Chock can be used freestanding or fixed to any hard surface.

Min./Max. Tyre Width:	50-130mm
Min./Max. Wheel Diameter:	Ø15"-21" (Ø380-535mm)



**D FPS4**  
**Motorcycle Rear Wheel Chock**  
 Features adjustable pivoting wheel guide, which secures rear wheel within chock. Four adjustable depths depending on diameter of wheel. Suitable for wheels with tyre widths Ø130-180mm and diameters Ø14"-21" (Ø355-535mm). Frame bolts to the floor, stabilising motorcycles without the need of side or centre-stands.

Min./Max. Tyre Width:	130-180mm
Min./Max. Wheel Diameter:	Ø14"-21" (Ø355-535mm)

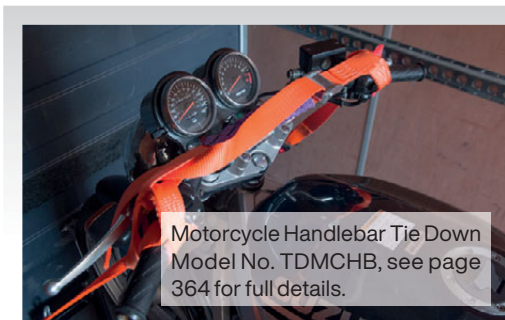


**E FPS6**  
**Motorcycle Front Wheel Chock**  
 Features adjustable pivoting wheel guide, which secures front wheel within chock. Three adjustable heights depending on diameter of wheel. Suitable for wheels with tyre widths 90-130mm and diameters Ø17"-21" (Ø430-535mm). Base can be permanently bolted to the floor (fixings included), and features a detachable upper assembly that can be easily stored and re-attached when required, stabilising motorcycles without the need for side or centre-stands. Base features lashing strap gap for securing the bike in transport.

Min./Max. Tyre Width:	90-130mm
Min./Max. Wheel Diameter:	Ø17"-21" (Ø430-535mm)

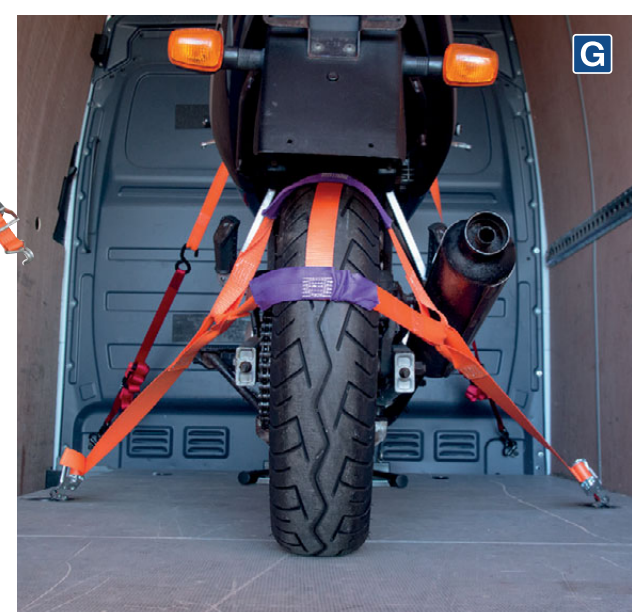
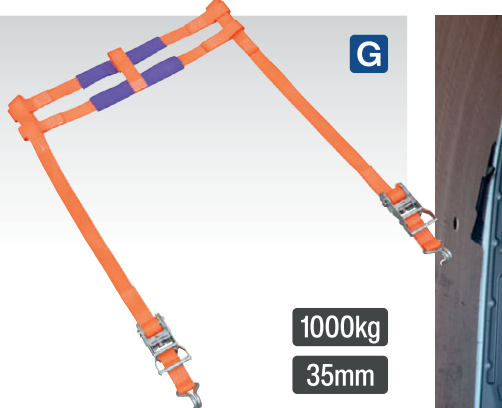


**F MTC01**  
**Motorcycle Transportation Combo**  
**Contents:** 25mm x 4m Ratchet Tie Down Polyester Webbing with S-Hooks. Tie Downs; Motorcycle Handlebar, Rear Wheel, Roll-in Wheel, Clamp Bolt Down



**G TDMCRW**  
**Motorcycle Rear Wheel Tie Down**  
 Manufactured from polyester webbing. Stitched reinforcement at joins and loops. Suitable for workshop use or for securing motorcycle to flat-bed or trailer. Secures rear wheel to anchor point without compressing the suspension units, reducing the risk of seal damage. Ratchet mechanically tensions the webbing using a simple drum and ratchet mechanism for superior load restraint.

Load Test:	1000kg
Maximum Tension:	500kg
Webbing Width:	35mm





**A MS008**  
**3pc Motorcycle Spindle Tool Set**

Prevents spindle from spinning when tightening or loosening wheel nut. Use appropriate socket on free end of tool to hold spindle. Six sizes to fit a variety of motorcycle makes and models.

Spindle Sizes:	12, 14, 17, 19, 22, 24mm
----------------	--------------------------



**B-C SEE BELOW**  
**1/2" Sq Drive Motorcycle Wheel Nut Sockets**

H22 and H24 53mm long sockets. Can be used for removing the front and rear wheels on modern motorbikes with internal Hex axle, suitable for maximum loads. Suitable for BMW, Honda, Suzuki, Yamaha, Ducati, Kawasaki and many other makes.

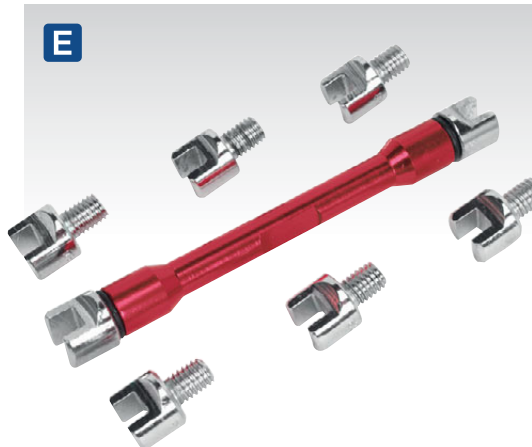
	<b>B</b>	<b>C</b>
Model No	SMC36	SMC37
Drive:	1/2" Sq	1/2" Sq
Size/Length:	H22/53mm	H24/53mm



**D SMC17**  
**Spoke Wrench**

Specially designed spoke wrench with six different sizes. Suitable for adjusting spoke tension and removing/installing new spokes.

Spoke Size 1:	6.5mm
Spoke Size 2:	6.1mm
Spoke Size 3:	5.7mm
Spoke Size 4:	5.4mm
Spoke Size 5:	4.9mm
Spoke Size 6:	4.3mm



**E MS086**  
**9pc Spoke Wrench Set**

Specially designed spoke wrench with eight interchangeable sized heads. Suitable for adjusting spoke tension and correcting buckled wheels.

Sizes:	5.4, 5.6, 5.8, 6, 6.2, 6.4, 6.6, 6.8mm
--------	----------------------------------------



**F MS070**  
**Motorcycle Wheel Alignment Tool**

Fast, simple and accurate alignment of rear wheel. Optimises vehicle performance and set-up after installation or modification of the chain, sprockets, brakes or suspension components. This fully portable kit is also ideal for track-day set-up or for the motorcycle enthusiast.

Contents:	Front Wheel Gauged Alignment Guides (x2), Rear Wheel Laser Guides (x2), Wheel Rim Adaptors (x4), Wall Mounting Brackets (x2)
Calibration Rig:	<b>H MS070CR</b>
Sealey Calibration Service:	<b>MS070CAL</b>



**G MS062**  
**9pc Motorcycle Wheel Bearing Removal Kit**

For easy removal of wheel bearings. Simply choose the correct size collet for the bearing and hammer one of the drifts into the allocated slot. Covers sizes from 10-25mm so will suit most popular motorcycles and ATV/quadbikes.

Contents:	Drift Shafts; 250, 400mm, Collets; Ø10, 12, 15, 17, 19, 20, 25mm
Replacement Collets:	MS062.V2-03 - Ø10mm, MS062.V2-04 - Ø12mm, MS062.V2-05 - Ø15mm, MS062.V2-06 - Ø17mm, MS062.V2-07 - Ø19mm, MS062.V2-08 - Ø20mm, MS062.V2-09 - Ø25mm
Weight:	1.93kg



**H MS070CR**  
**Calibration Rig for MS070**

Used to check and adjust the alignment of the lasers on Model No. MS070 Motorcycle Wheel Laser Aligner. This unit will allow workshops to check and adjust in-house. Supplied with comprehensive instructions.



**A VS02011**  
**Brake Bleeder Set with Container**

Composite 100ml collection bottle with magnetic locating pad. Supplied with non-return valve, tubes and connectors.

**IMPORTANT:** Operating guidelines are provided with every brake bleeder. However for definitive information relating to the correct method of bleeding a particular vehicle's system, always refer to the vehicle manufacturer's instructions.



**B MS098**  
**Weighted Motorcycle Brake Bleeder**

One-person bleeding/servicing of hydraulic brakes and clutches. The kit utilizes a small weighted non-return valve and a connector hose that attaches to the scooter or motorcycle bleed nipple. As the brake/clutch is bled, the valve prevents the used fluid and air being drawn back into the system.



**C MS014**  
**Motorcycle Brake Bleeder**

One-person bleeding/servicing of hydraulic brakes and clutches. The kit utilises a small non-return valve and two connector hoses that attach to the scooter or motorcycle bleed nipple. As the brake/clutch is bled the valve prevents the used fluid and air being drawn back into the system.



**D VS0201**  
**Brake Bleeder Set with Container**

Composite collection bottle with magnetic locating pad. Supplied with tube and connectors.

**Capacity:** 100ml

**E VS020TC**  
**1L Pneumatic Vacuum Single & Twin Brake Caliper/Clutch Bleeder**

Simple, one-person operation using standard workshop air supply (90-120psi). Quick, clean and efficient. Does not require specialised brake reservoir caps. Supplied with two bleed lines for twin caliper systems. Draws fluid from the bleed nipple enabling either bleeding or full replacement of fluid in system.

**Inlet Size:** 1/4" BSP  
**Maximum Air Supply:** 120psi



**E**  
**1L Capacity**



**F MS162**  
**14pc Motorcycle Brake Piston Removal Kit**

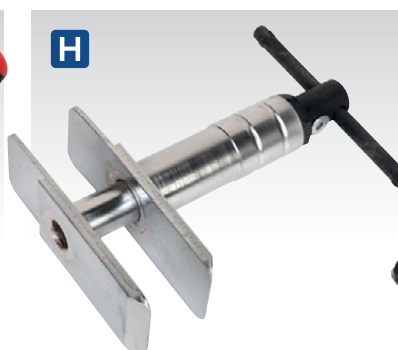
Extract brake caliper pistons without risk of damage to outer face of piston. Fast and simple operation. Features detachable slide hammer for impact removal. The kit includes 12 adaptors to suit different sized pistons.

**Capacity:** Ø19-30mm



**G SMC35**  
**Disc Brake Opening Tool**

Wedge shaped tool ideal for expanding the gap between brake pads to speed up pad replacement. Features moulded rubber handle enabling extra grip.



**H MS711**  
**Motorcycle Disc Brake Spreader Tool**

Essential tool for retracting the brake piston to allow insertion of new brake pads. Suitable for most front and rear motorcycle brake calipers.

**Maximum Spread:** 50mm



**I VS1806**  
**Motorcycle Brake Piston Removal Pliers**

Extract brake caliper pistons without risk of damage to outer face of piston. Fast and simple operation. Clamp screw allows pliers to be fixed into cup of piston for added pulling power.

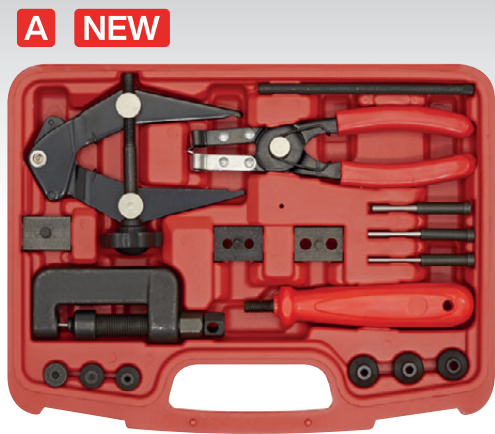
**Capacity:** Ø18-43.5mm



**J VS1806R**  
**Motorcycle Brake Piston Removal Ratchet Pliers**

Extract brake caliper pistons without risk of damage to outer face of piston. Fast and simple operation with a self-ratcheting system that allows pliers to automatically lock into cup of piston for added pulling power. Serrated pressure blocks for non-slip operation.

**Capacity:** Ø16.5-39mm



**A VS779KIT**  
**Motorcycle Chain Maintenance Kit**

Breaks and rejoins most types of chain quickly and easily. Suitable for most sizes of drive or cam chain from #25 to #520. Supplied with a range of pins, dies and detailed instructions. Chain link pulling tool is a useful third hand tool for pulling chain ends together while re-linking.

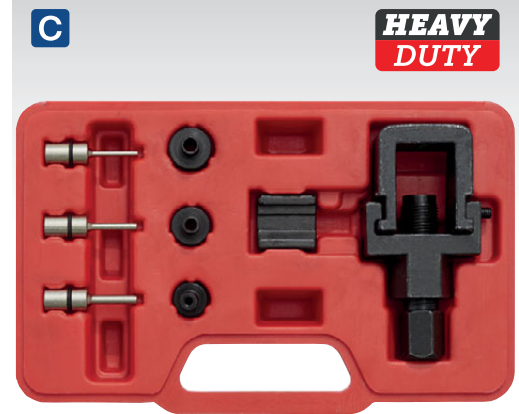
**Contents:** Pins; 2.2, 3.2, 4, 5mm, C-Body Anvils; 2.2, 3, 6mm, Alignment Bolt Anvils; 2.2, 3.2, 4, 5mm, Spring, Ball-Bearing, Press Plates; A, B, C, C-Body; Lever & Handle, Alignment Bolt, C-body, Chain Puller Clamp, Chain Split Link Pliers



**B VS779**  
**Motorcycle Chain Breaker & Riveter**

Breaks and rejoins most types of chain quickly and easily. Suitable for most sizes of drive or cam chain from #25 to #520. Supplied with a range of pins, dies and detailed instructions. Please view the instructional video on this tool to ensure its correct use.

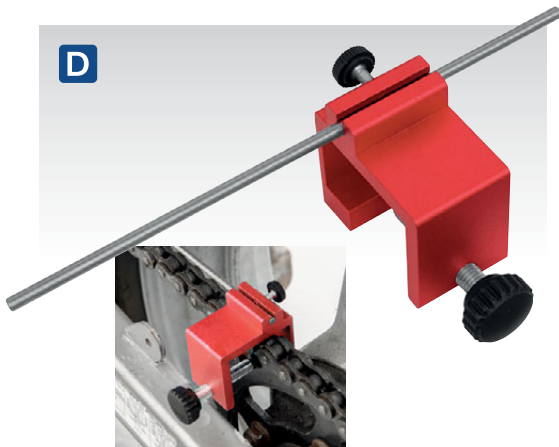
**Contents:** Pins; 2.2, 3.2, 4, 5mm, Pin Guide; 2.2 Upper, 2.2mm Lower, Riveter Pin, Anvil; 2.2, 3, 6mm, Spring, Ball-Bearings (x2), Press Plate, Lever, Handle, Chain Press



**C SMC4**  
**Heavy-Duty Motorcycle Chain Splitter & Riveting Tool Set**

Comprehensive set designed to shorten and lengthen motorcycle chains by removing or replacing links. Set is also ideal for use on horticultural and agricultural machinery. Includes tools designed for riveting and a plate holder for connecting links accurately.

**Contents:** Pin Holder, 27mm Fixed Shaft, 19mm Pin Head, U-Holder, Plate Holder, Pins; 3, 4, 5mm, Anvils; 3, 4, 5mm



**D MS005**  
**Motorcycle Chain Alignment Tool**

Accurate tool for correct alignment of the chain and sprocket. Helps prevent wear to the chain and sprockets.

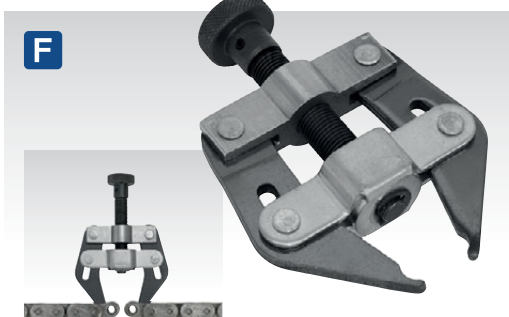
**Maximum Chain Size:** 28mm



**E VS0290**  
**Brake Disc Run-Out Kit**

Check for ball joint wear and brake disc run-out quickly and easily. Locking pliers secure to any convenient position, enabling DTI gauge to be placed against brake disc. Kit includes Metric calibrated DTI gauge.

**Deflection/Travel:** 10mm  
**Graduation:** 0.01mm  
**Shank Size:** 8mm



**F SMC5**  
**Motorcycle Chain Puller**

Useful third hand tool for pulling chain ends together while re-linking. Easy-to-use and suitable for most sizes of chain.



**G SMC29**  
**Motorcycle Chain Split Link Pliers**

Specially designed pliers with angled jaws and machined recesses for gripping the split link locking clips. Ergonomic, soft grip handles for comfort and additional grip. Aids the easy removal and installation of the locking clips fitted to common split links used to join the drive chains on many motorcycles.



**H VS1804**  
**Motorcycle Chain Brush**

Composite angled chain brush. Suitable for use on all chain types.

**Length:** 265mm



**A MS164**  
**28pc Compact Motorcycle Tool Kit**

Small compact kit comprises a selection of essential motorcycle maintenance tools. Tools feature soft grip handles for comfort and control. Supplied in storage case, ideal for storing under a motorcycle seat.

**Contents:** Bits; Slotted - 3, 4, 6mm, Phillips - #1, #2, Pozi - #1, #2, TRX-Star\* - T15, T20, T25, Bit Driver Handle, 1/4" Sq Drive Sockets; 8, 10, 12, 13, 14mm, 1/4" Sq Drive 72-Tooth Flip Reverse Ratchet Wrench with Quick Release, 75mm Extension Bar, 110mm Mini Side Cutter, 110mm Mini Long Nose Pliers, 150mm Adjustable Wrench, Folding Hex Keys; 2, 2.5, 3, 4, 5, 6mm, Black Cable Ties (x10)



**D SMC45**  
**10-Pocket Tool Roll**

Heavy-duty water-resistant canvas tool roll. Ideal for organising tools and taking them on the go. 10-Pockets of various sizes for an array of tools. Fitted with adjustable strap.

**Overall Size (W x H):** 445 x 317mm



**G MS003**  
**14mm Reverse Action Spark Plug Thread Chaser**

Specially designed to repair damaged spark plug threads on modern engines. Unique design allows the tool to be passed through the plug thread into the combustion chamber, then expanded to the correct size starting on the inner, undamaged threads. Traditional thread restorers rely on luck for the restored and undamaged threads to align.

**Size:** 14mm  
**Length:** 138mm



**B SMC43**  
**6-Pocket Zipped Tool Pouch**

Heavy-duty reinforced zipped tool pouch perfect for taking essential tools on the go. Fitted with an array of storage solutions for any tool you may need. Contains six pockets for items such as spanners as well as seven adjustable hook-and-loop retainers, six elastic retainers and a metal clip for storing a tape measure. Supplied with convenient carry handle.

**Overall Size (W x D x H):** 310 x 50 x 265mm

**Configuration:** Pockets (x6), Adjustable Hook-and-Loop Retainers (x7), Elastic Retainers (x6), Metal Clip



**E SMC31**  
**18pc Socket & JIS Bit Set**

Small compact kit comprises a selection of essential sockets and bits for use on motorcycles. Contains socket/bit holder, 3/8" Sq drive sockets and 1/4" Hex JIS, slotted, hex and TRX-Star\* bits. Supplied in compact storage case, ideal for stowing under a motorcycle seat.

**Contents:** 3/8" Sq Drive Bit Holder, 3/8" Sq Drive Socket Bits; 8, 10, 12, 13, 15mm, 1/4" Hex Bits; Slotted - 4, 5, 6mm, JIS - #1, #2, TRX-Star\* - T10, T15, T20, Hex - 2, 3, 4mm, 1/4" Sq Drive Adaptor



**H SP38MFS**  
**3/8" Sq Drive Multi-Fit Socket**

Chrome Vanadium body, oxidised Chrome Molybdenum pawl and adjustment mechanism. 20 Sizes covered in one socket making it ideal for any recovery tool kit.

**Depth:** 55mm  
**Size:** Variable 10-19mm(3/8"-3/4")

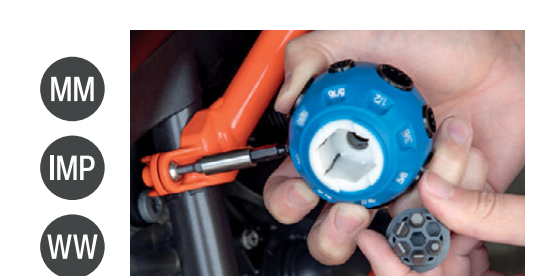


**C SMC44**  
**16-Pocket Mechanic's Tool Apron**

16-Pocket tool apron perfect for keeping all tools organized and in a reachable location when working at worktable or on a vehicle. Fitted with 16-pockets in varying sizes as well as two loops for use with larger items such as hammers. 2-Way adjustable straps.

**Overall Size (W x H):** 585 x 533mm

**Configuration:** Pockets (x16), Hammer Holding Rings (x2)



**F SMC34**  
**40-in-1 Total Drive® Ball Wrench**

Compact multi-tool for cyclists, motorcyclists and DIY enthusiasts. Eight Total Drive® sockets that fit 28 different sizes of fasteners including Metric, Imperial, Whitworth, TRX-Star\* and Spline. Includes 12 1/4" Hex bits and magnetic extension bar/bit holder. Will fit into a pocket, luggage or even under the seat of many motorcycles.

**Contents:** Metric Socket Sizes; 8, 10, 11, 13, 14, 16, 17mm, Imperial Socket Sizes; 5/16", 3/8", 7/16", 1/2", 9/16", 5/8", 11/16", TRX-Star\*; E10, E12, E14, E16, E18, E20, E22, Spline; M10, M12, M14, M16, M18, E20, M22, 1/4" Hex Bits; Slotted - 4, 5, 6mm, Phillips - #0, #1, #2, Pozi - #0, #1, #2, Hex - 3, 4, 5mm, Magnetic Extension Bar/Bit Holder



A SMC2

### 11pc Adjustable C-Spanner Hook & Pin Wrench Set

Hardened and tempered drop-forged Chrome Vanadium steel with recessed panel and satin finish. Specially designed for use with slotted retaining rings. Hook and pin interchangeable hinged arms with three wrenches covering sizes 19-121mm. Pin sizes Ø4-8mm. Supplied in tough storage case.

Small Wrench Adjustment:	19-51mm
Medium Wrench Adjustment:	32-76mm
Large Wrench Adjustment:	51-121mm
Small/Medium Wrench Pin Sizes:	Ø4, 5, 6mm
Large Wrench Pin Sizes:	Ø6, 8mm



G  
MAXIMUM REACH  
750mm

G MS1824

### Motorcycle Fork Spring Compressor

Designed to relieve fork spring tension allowing removal of the tube caps from the rod, without damaging the threads. Can be used with the fork in situ or on the bench. Use with 17mm socket.

Maximum Reach:	750mm
Maximum Fork Tube:	Ø32mm



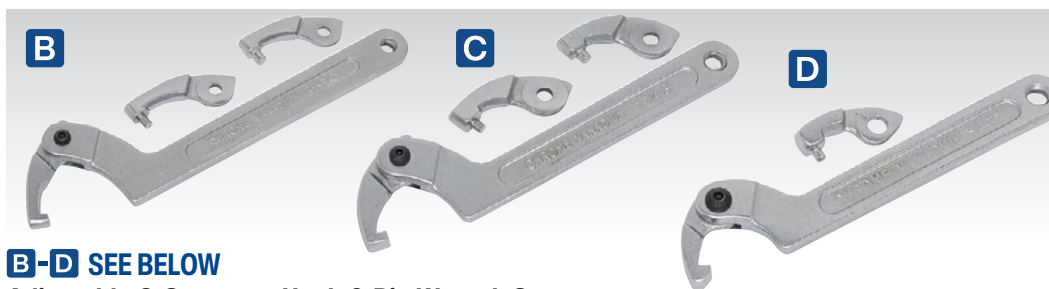
H

H SEE BELOW

### 400g EP2 Lithium Grease Cartridge

Multipurpose EP2 Lithium grease cartridge suitable for use with all plunger type grease guns. Ideal for a wide range of applications.

Model No:	Pack Qty:
SGC1	1
SGC12	12



B-D SEE BELOW

### Adjustable C-Spanner - Hook & Pin Wrench Sets

Hardened and tempered drop-forged Chrome Vanadium steel with recessed panel and satin finish. Specially designed for use with slotted retaining rings. Hook and pin interchangeable hinged arms.

Model No:	B SMC2L	C SMC2M	D SMC2S
Wrench Adjustment:	51-121mm	32-76mm	19-51mm
Wrench Pin Sizes:	Ø6, 8mm	Ø5, 6mm	Ø4mm



E

E MS040

### Motorcycle Steering Stem Bearing Removal Tool

Prevents damage associated with removal of stem bearing. Universal tool works on most steering stem bearings ranging from Ø30-68mm.

Opening Size:	Ø30-68mm
---------------	----------

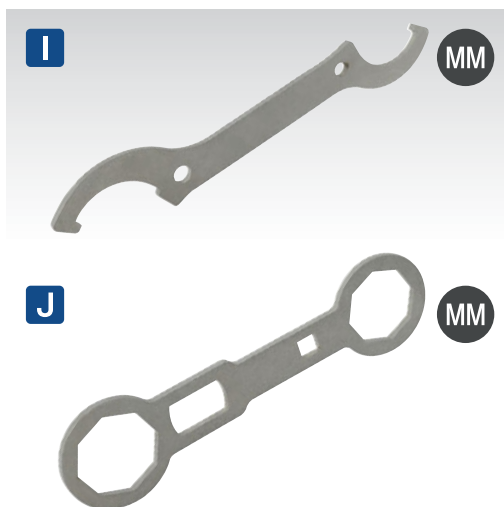


F

F AK4314

### 4pc JIS Screwdriver Set

For more information, see page 110.



I

J

I SMC38

### 36-42mm/45-50mm Double Hook-End C-Spanner

Combination hook-end C-spanner for use with headstock adjustment and rear suspension adjustment. Suitable for a variety of motorcycles. Small End; 36-42mm, Large End; 45-50mm.

J SMC46

### 46 & 50mm Fork Cap Spanner

Combination fork cap spanner suitable for use on Kayaba, Showa and twin camber forks.



K

K SMC3

### Motorcycle Steering Bearing Press

Aluminium kit suitable for straight installation of bearing race without damage to the bearings or headstock. Includes seven dies for bearing sizes ranging from 32-46mm. Bearing setting bar features seven increments for a wide range of headstock sizes. Comfort grip T-handle rotates separately from the press plate for smooth bearing installation. Once the bearing has been set, use the bearing seating tool to finish installation.

Setting Bar Length:	420mm
Setting Bar Increments:	6 x 30mm, 1 x 42mm
Die Sizes:	Ø32, 36, 38, 42 (x3), 46mm

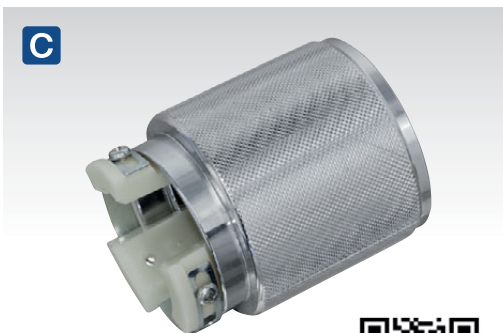




**A SMC49**  
**Fork Seal Driver Kit**

A comprehensive fork seal driver kit for fork sizes Ø35 -50mm. Supplied with six different size nylon adaptors and can be used on both conventional and upside-down forks. Ergonomically designed main driver body for accurate operation using less power.

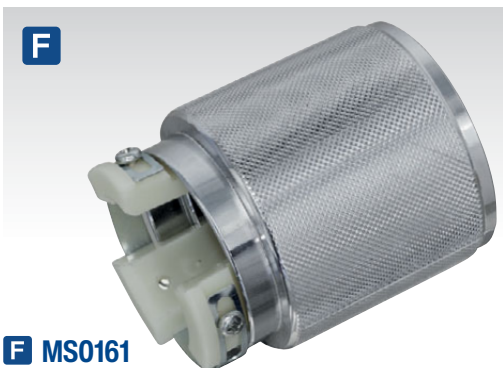
**Contents:** Seal Driver Inserts; Ø35-36, 40-41, 42-43, 45-46, 47-48, 49-50mm, Seal Driver Shell



**C MS016**  
**Fork Seal Driver**

Designed for easy installation of fork seals. Limits potential damage caused by other installation methods to the forks.

**Minimum/Maximum Fork Diameter:** Ø35-47mm



**F MS0161**  
**Fork Seal Driver**

Designed for easy installation of fork seals. Limits potential damage caused by other installation methods to the forks.

**Minimum/Maximum Fork Diameter:** Ø45-54mm



**D VS1824**  
**Motorcycle Coil Spring Compressor**

Essential for the assembly and disassembly of suspension units. Suitable for most types of classic and modern motorcycle coil springs. Supplied with four spare plastic spring protectors. Use with ratchet wrench.

**Drive:** 3/8" Sq & 17mm Hex  
**Maximum Jaw Opening:** 105mm



**G MS033**  
**Motorcycle Fork Oil Level Gauge with Top-Up Syringe**

Specialized tool designed for checking and adjusting oil levels on all conventional and single chamber cartridge motorcycle forks. Supplied with adjustable ring and oil pipe to measure oil levels from 0-290mm in 5mm increments. Features top-up syringe with 70ml capacity. Can also be used on bicycles equipped with front suspension.



**B MS050D**  
**Motorcycle Fork Seal Driver - Shell Only**

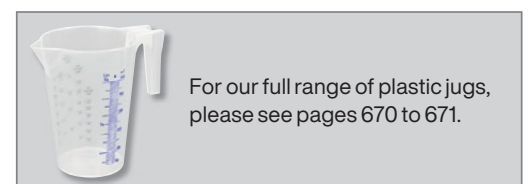
Professional seal driver shell works with a range of Sealey Fork Seal Driver Sleeves. Split design for easy operation on both conventional and USD (inverted) forks for the installation of fork seals. Ergonomically designed driver body requires less power and aids accurate operation. Compatible with Model No's MS0531, MS0551, MS0561, MS0581, MS0591 Fork Seal Driver Sleeves (see below).



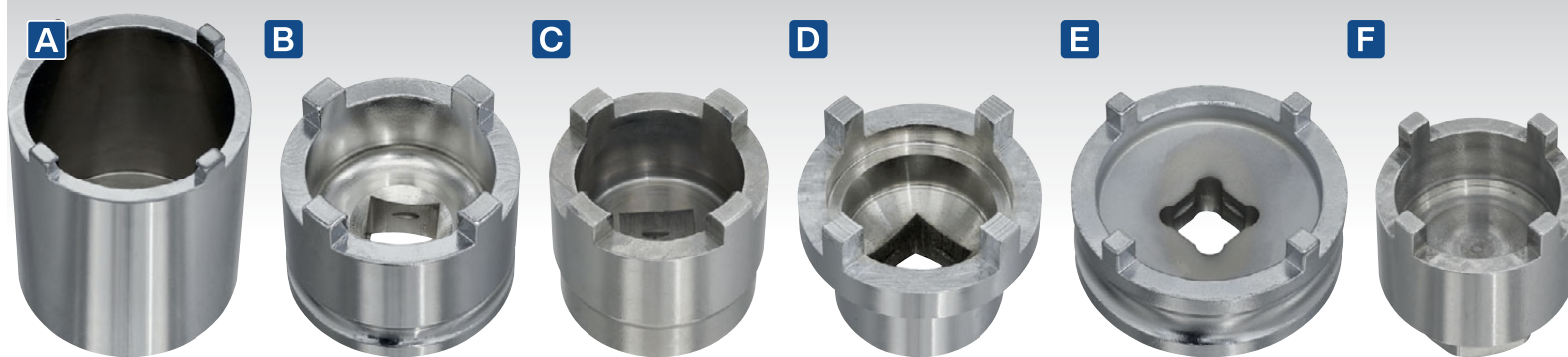
**E SEE BELOW**  
**Motorcycle Fork Seal Driver Sleeves**

Professional seal driver sleeves. Split design for easy operation on both conventional and USD (inverted) forks for the installation of fork seals. Available in various sizes ranging from Ø35-48mm to accompany Model No. MS050D Fork Seal Driver Shell. Manufactured in hard-wearing reinforced nylon for maximum protection of the fork leg.

Model No:	Size:
MS0531	Ø35-36mm
MS0551	Ø40-41mm
MS0561	Ø42-43mm
MS0581	Ø45-46mm
MS0591	Ø47-48mm

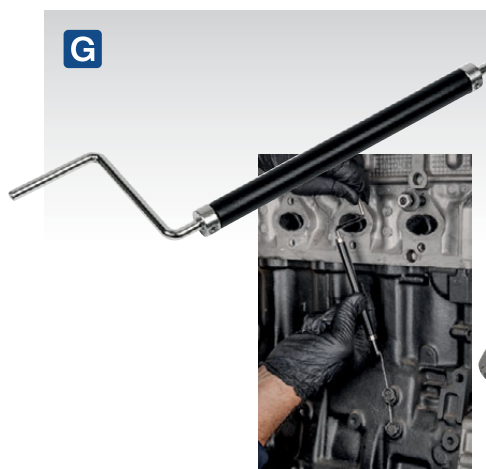


For our full range of plastic jugs, please see pages 670 to 671.

**A-F SEE BELOW****Motorcycle Swingarm Locknut Sockets**

4-Tooth sockets, specially designed to remove castellated locknuts found on motorcycle swingarms. Also suitable for some engine mounting nuts.

	<b>A</b>	<b>B</b>	<b>C</b>	<b>D</b>	<b>E</b>	<b>F</b>
<b>Model No:</b>	<b>SMC18</b>	<b>SMC19</b>	<b>SMC20</b>	<b>SMC21</b>	<b>SMC22</b>	<b>SMC23</b>
<b>External Diameter:</b>	Ø48.5mm	Ø43mm	Ø37mm	Ø42mm	Ø50mm	Ø30mm
<b>Internal Diameter:</b>	Ø41mm	Ø33.5mm	Ø28mm	Ø31.8mm (5mm depth), Ø26.75mm (16mm depth)	Ø40mm	Ø24mm
<b>Internal Socket Depth:</b>	48.5mm	17.5mm	18.5mm	16mm	6mm	13mm
<b>Number of Pins:</b>	4	4	4	4	4	4
<b>Pin Width:</b>	5.5mm	7mm	7mm	5mm	4.5mm	4mm
<b>Pin Depth:</b>	4mm	5.6mm	5mm	7.5mm	5mm	5mm
<b>Drive Type:</b>	1/2" Sq	1/2" Sq	1/2" Sq	1/2" Sq	1/2" Sq	19mm

**G SMC53****Locking Wire Twist Tool**

Suitable for safety wiring all types of fasteners, caps, drain cocks, valves and electrical connectors.

**Maximum Capacity:** Ø1.5mm

**H S01100****270mm Safety Wire Twister**

Suitable for safety wiring all types of fasteners, caps, drain cocks, valves and electrical connectors.

**Maximum Capacity:** Ø1.5mm

**Length:** 270mm

**I SMC1****6pc Motorcycle Swingarm Locknut Socket Set**

4-Tooth sockets, specially designed to remove castellated locknuts found on motorcycle swingarms. Also suitable for some engine mounting nuts. Supplied in storage case.

**Inner/Outer Ø(Tooth Width)/Drive:** Ø24/30mm (4mm)/19mm Hex, Ø28/37mm(7mm)/1/2" Sq, Ø30.5/43mm(5mm)/1/2" Sq, Ø34/43mm (7mm)/1/2" Sq, Ø41.5/48.5mm(5.5mm)/1/2" Sq, Ø40.5/50mm(4mm)/1/2" Sq

**J SMC6****20 & 24mm Clutch Locking Nut Removal Tool**

Designed to loosen and tighten the lock nut for the removal and installation of a motorcycle clutch. Manufactured from heavy-duty heat treated steel. Suitable for use on motorcycles with 20 or 24mm lock nuts.

**K SMC7****24mm Clutch Locking Nut Removal Tool**

Designed to loosen and tighten the lock nut for the removal and installation of a motorcycle clutch. Manufactured from heavy-duty heat treated steel. Suitable for use on motorcycles with 24mm lock nuts.

**L SMC9****20mm Clutch Locking Nut Removal Tool**

Designed to loosen and tighten the lock nut for the removal and installation of a motorcycle clutch. Manufactured from heavy-duty heat treated steel. Suitable for use on motorcycles with 20mm lock nuts.



**A MES01**  
**30kg Single/Twin Cylinder Motorcycle Engine Stand**

Suitable for small capacity single and twin cylinder engines (maximum weight 30kg) and includes a utility/drip tray. Supports can rotate for accessibility to all parts of the engine.

Capacity:	30kg
Height:	375mm
Width:	320mm
Length:	535mm
Engine Support Span:	200-370mm



**B MES02**  
**75kg Engine Rebuild Stand - Multi-Cylinder**

Suitable for supporting large multi-cylinder engines (maximum weight 75kg). Features fully adjustable mounting arms and swivel castors. Supports can rotate for accessibility to all parts of the engine.

Capacity:	75kg
Min./Max. Mounting Brackets Width:	130-370mm
Minimum/Maximum Frame Length:	580-900mm
Minimum/Maximum Frame Height:	540-795mm



**C MES03**  
**100kg Engine Rebuild Stand Multi-Cylinder**

Suitable for supporting large multi-cylinder engines (maximum weight 100kg). The supports can rotate for accessibility to all parts of the engine. Width and length adjustable. Engine stand frame elongates to allow adjustment for length between mounting points.

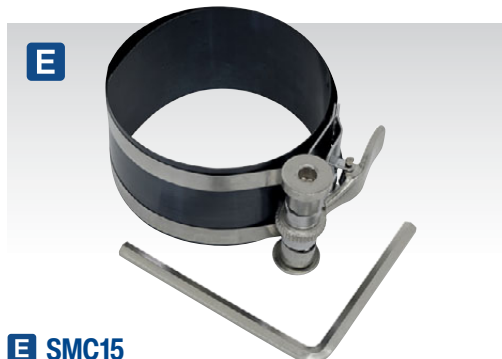
Capacity:	100kg
Min./Max. Mounting Brackets Width:	130-370mm
Minimum/Maximum Frame Length:	500-950mm
Height:	480mm



**D VS1814**  
**Motorcycle Valve Spring Compressor**

Suitable for most motorcycle engines. Features two sizes of threaded adjusters for increased applications and five sizes of interchangeable jaws. Ø50-170mm Capacity and 120mm throat depth. Supplied in storage case.

Jaw Sizes:	16, 19, 23, 25, 30mm
Capacity:	Ø50-170mm
Throat Depth:	120mm



**E SMC15**  
**Ø38-83mm Piston Ring Compressor**

Quality construction with sprung steel wrap and friction action tension mechanism. Ideal for small engine pistons. Supplied with steel key.

Capacity:	Ø38-83mm
Depth:	50mm



**F SMC16**  
**Motorcycle Piston Ring Compressing Tool**

Used to prevent piston ring damage while inserting pistons into the cylinder head. Easily removed when cylinder is in place. Tool supplied with four ring clamps ranging from Ø40-85mm. Will fit most engine sizes.

Small Ring Clamp:	Ø40-50mm
Medium Ring Clamp:	Ø50-70mm
Large Ring Clamp:	Ø60-75mm
Extra-Large Ring Clamp:	Ø75-85mm



**G MS051**  
**Stud Installation Tool**

Aids fast installation of threaded studs without risk of damage to thread. Ideal for engine and exhaust studs. Operate using a 19mm spanner and a 5.5mm hex key.

Thread Sizes:	M6 x 1, M8 x 1.25, M10 x 1.25mm
---------------	---------------------------------



**H SMC30**  
**Motorcycle Engine Crankcase Separator**

Fully adjustable robust tool for assisting in the successful separation of the engine crankcases to allow access to the crank shaft, connecting rods and other internal components. Suitable for use on a variety of motorcycle and ATV engines. Supplied in storage case.

Mounting Bolts:	M8 x 1.25 x 90mm (x3)
Mounting Bolt Adaptors:	M6 x 1 x 65mm, M6 x 1 x 57mm, M6 x 1 x 49mm
Main Threaded Bar:	M14 x 1.5 x 180mm



**I SMC24**  
**6pc Tappet Adjustment Tool Set**

Set includes three wrenches; 8mm, 9mm, 10mm and three types of adjuster shafts; flat blade type, 3mm, 4mm square type. The wrenches and shafts are interchangeable to give nine different combinations suitable for tappet adjustments on most motorcycle and ATV engines.



**A VS1811**  
**Ø45-120mm Motorcycle Pulley Holder**

Suitable for flywheel and clutch pulleys on a large range of motorcycles. Adjustable strap for use on different pulley sizes. Rotate handle so foot contacts against pulley to secure. To release, simply rotate in the opposite direction. Vinyl dipped strap and foot gives added grip.

Capacity: Ø45-120mm



**B SMC34**  
**40-in-1 Total Drive® Ball Wrench**

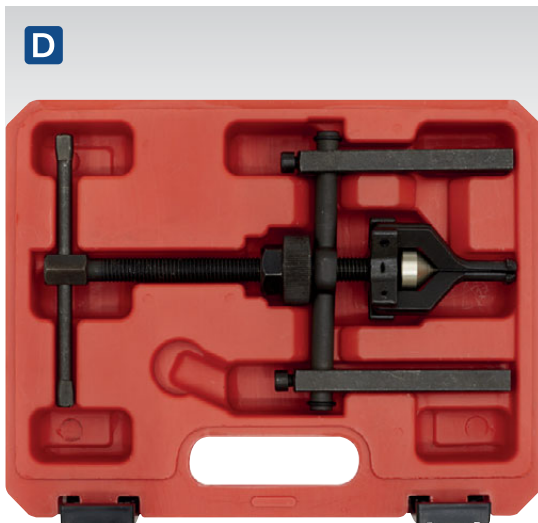
For more information, see page 351.



**C MS036**  
**Motorcycle Locking Pulley Holder**

Suitable for holding flywheels, clutches and pulleys during removal and installation. 8mm Pins on one side and flat blades on the other. Features locking adjustment screw to keep tool at required set size with quick release when finished.

Length: 300mm  
 Pin Size: 8mm



**D MS0621**  
**Ø12-38mm Wheel Bearing Puller 3-Jaw**

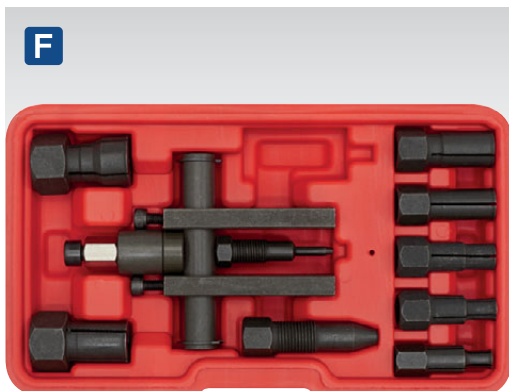
3-Jaw design applies even pressure preventing damage to bearings. Designed to remove bearings with Ø12-38mm internal diameter. Forged and heat treated steel jaws for greater strength. Corrosion resistant black oxide finish.



**E SMC48**  
**10pc Motorcycle Flywheel Puller Set**

Comprehensive set of flywheel pullers used to separate flywheel from the crankshaft taper. Features ten pullers of which five have double end, giving increased applications. Suitable for most makes of motorcycle. Supplied in storage case.

Thread Sizes: M14 x 1.5, M16 x 1.5, M18 x 1.5, M19 x 1, M20 x 1, M22 x 1, M22 x 1.5, M24 x 1, M25 x 1.5, M26 x 1, M26 x 1.5, M27 x 1, M27 x 1.25, M28 x 1, M28 x 1.5mm



**F AK7160**  
**10pc Bridge Bearing Puller Set**

Screw-type bridge extractor set. The thin tapered lips on the collets secure a positive grip on the curved surface of the internal bearing bore. Gently removes blind bearings where the use of a slide hammer may damage the surrounding material. Bearing extractor collets with internal capacity from 8 to 27mm.

Collet Diameter: Ø8-9.4, 9.5-11.4, 11.5-13.4, 13.5-16.4, 16.5-18.4, 18.5-24, 24.5-27mm



**G AK716**  
**12pc Blind Bearing Puller Set**

Medium stroke 1.5kg slide hammer with 395mm shaft and a screw-type bridge extractor. Gently removes blind bearings where the use of a slide hammer may damage the surrounding material. Includes bearing extractor collets with internal capacity from 8-34mm.

Collet Diameter: Ø8-9.5, 10-11.5, 12-13.5, 15-16, 17-18.5, 20-23, 24.5-27, 30-32, 32-34mm





**A MS038**  
**Motorcycle Twin-Clamp Cable Oiler**  
 Twin-clamp cable oiler for use with spray type silicone or oil on motorcycle cables.



**B NEW**  
**B MS0381**  
**Hydraulic Type Cable Oiler**  
 Hydraulic cable oiler, forces oil between inner and outer cables throughout their entire length leaving them silky smooth. For use on brake, throttle, speedo and choke cables for motorcycle, car, bicycle and lawnmowers that require regular oiling as part of their servicing. Easy-to-use and cleaner to service cables between 7 to 19mm. Avoids replacing cables that are worn or seized. Results in smooth operating cables.



**C MS046**  
**Ø60-84mm Oil Filter Band Wrench**  
 Suitable for removing and installing oil filters with diameters ranging from Ø60-84mm. 25mm Wide spring steel band with corrosion resistant coating. PVC dipped multi-position handle can be applied at 180° to the filter. Automatically tightens as pressure is applied.

Capacity: Ø60-84mm



**G CJT01**  
**20pc Folding Carburettor Jet Tool 0.45-1.5mm**  
 Precision machined carburettor jet cleaning and sizing kit. 20 Sizes ranging from 0.45-1.5mm in 0.05mm increments. For classic cars and larger jetted motorcycles. Folding design makes it easy for storage and small enough to carry. May also be used to clean gas jets on welding torches.

Jet Sizes: 0.45, 0.5, 0.55, 0.6, 0.65, 0.7, 0.75, 0.8, 0.85, 0.9, 0.95, 1, 1.05, 1.1, 1.15, 1.2, 1.25, 1.3, 1.35, 1.4, 1.45, 1.5mm



**D MS004**  
**Ø43-102mm Oil Filter Claw Wrench**  
 Chrome polished carbon steel construction with 3/8" and 1/2" Sq drive. Also suitable for use with a 21mm spanner. Claws grip filter tighter as more torque is applied. Fits a range of popular motorcycle can filters ranging from Ø43 to 102mm.

Drive: 3/8" Sq, 1/2" Sq, 21mm Spanner  
 Size: Ø43-102mm



**E-F SEE BELOW**  
**Oil Filter Cap Wrenches - 14 Flutes**  
 Cap type filter wrenches prevent damage to filter housing and will withstand up to 115Nm(85lb.ft) of torque. Low profile design suitable for use in confined areas.

	<b>E</b>	<b>F</b>
Model No:	MS044	MS045
Drive:	3/8" Sq	3/8" Sq
Size:	Ø65mm	Ø68mm
Flutes:	14	14
Steps:	1	1



**H MS155**  
**1.6L Manual Vacuum Oil & Fluid Extractor**  
 Constructed from composite materials and suitable for the extraction of engine or transmission oils from cars, motorcycles, marine engines, stationary engines and industrial machinery. Also suitable for low viscosity fluids such as water. Supplied with two suction probes and cover cap. Use probes to remove engine oil through the dipstick tube.

Capacity: 1.6L  
 Suction Probes: Ø10 x 1300, Ø8 x 1008mm



**I MS156**  
**4L Manual Vacuum Oil & Fluid Extractor**  
 Constructed from composite materials and suitable for the extraction of engine or transmission oils from cars, motorcycles, marine engines, stationary engines and industrial machinery. Also suitable for low viscosity fluids such as water. Supplied with two suction probes, easy-pour spout and cover cap. Use probes to remove engine oil through the dipstick tube.

Capacity: 4L  
 Suction Probes: Ø10 x 1300, Ø5 x 1008mm

A



E10 Compatible

**A MS100****3pc Motorcycle Compression & Fuel Pressure Gauge Set**

Set of three gauges with connectors and adaptors for testing compression and fuel pressure on motorcycles. Gauges range from 0-300psi for compression testing, 0-7bar (0-100psi) for fuel pressure and 0-1bar (0-100kPa) for low pressure fuel.

**Spark Plug Sizes:** 8, 10, 12, 14mm

**Hose Length:** 220mm

**Fuel Connector Sizes:** Ø6.4, 7.9mm

E 1L



E10 Compatible

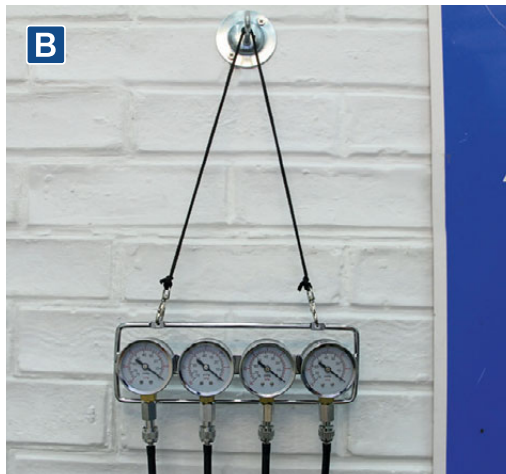
**E MS029****1L Motorcycle Portable Fuel Tank**

Must have item when needing to remove fuel tank to perform motorcycle maintenance. Eliminates need to balance fuel tank in an awkward position. Simply remove your tank, connect the auxiliary fuel tank, which is gravity fed, and hang it up using the hook provided. Features 1L tank, 950mm hose, two hose clamps and on/off tap. For dual entry carburettor systems, use the Model No. MS029DCK Fuel Feed Lines. Suitable for E10 petrol.

**Tank Size:** 1L

**Hose Length:** 950mm

B



B



E10 Compatible

**B VS209****Carburettor Synchronizer Vacuum, Mini-Type**

For more information, please see page 436.

F



E10 Compatible

**F MS029DCK****Dual Carburettor Accessory Kit for MS029**

Dual entry carburettor accessory kit for Model No. MS029. Enables MS029 to be fitted to a motorcycle with dual fuel inlets eliminating need to balance fuel tank in an awkward position. Includes 100mm hose, two 200mm hoses, four hose clamps and Y-piece adaptor. Suitable for E10 petrol.

**Contents:** 100mm Hose, 200mm Hoses (x2), Hose Clamps (x4), Y-Piece Adaptor

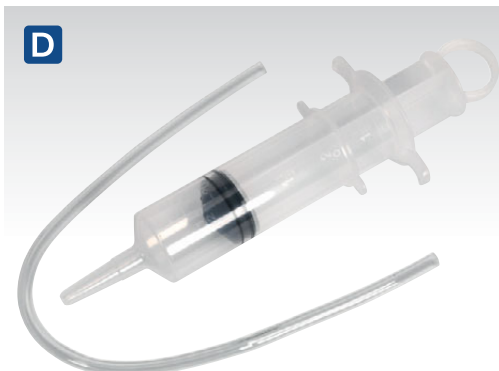
C

**C FSCP300****Fuel System Cleaner - Petrol Engines**

High performance fuel system cleaner for all petrol engines. Removes varnish and gum deposits from the entire fuel system. One can sufficient for 60 to 80L of petrol, add to the fuel tank before refuelling.

**Size:** 300ml

D

**D MS166****70ml Oil Inspection Syringe**

Multipurpose syringe with synthetic rubber seal, ideal for the transfer of oils/fluids to and from vehicle components. Compact size and flexible extension tube makes it ideal for use on motorcycles. Translucent body allows easy inspection of contents.

**Capacity:** 70ml

**Compatibility:** Coolant, Brake Fluid, Petrol, Oil, Water

G

**G MS013****Pilot Screw Adjusting Tool**

460mm Deep access tool, particularly suited to adjustment of motorcycle carburettors. 110° Angled head gives improved access to hard-to-reach areas. One turn of handle equals one turn of slotted blade. Blade tip height is adjustable allowing it to be set in place during operation.

**Blade Type:** Slotted

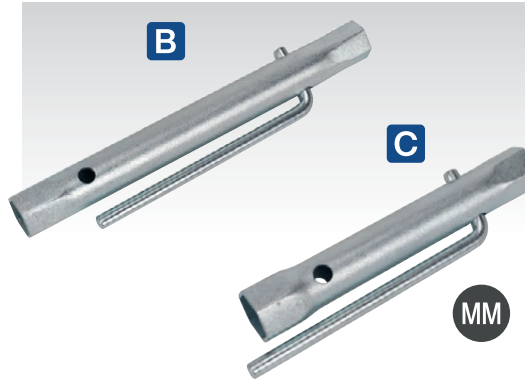


**A MS165**

**3pc Double End Long Reach Spark Plug Box Spanner Set**

Double end, traditional style, long reach spark plug box spanners with L-bar. Supplied in a pouch for safe storage.

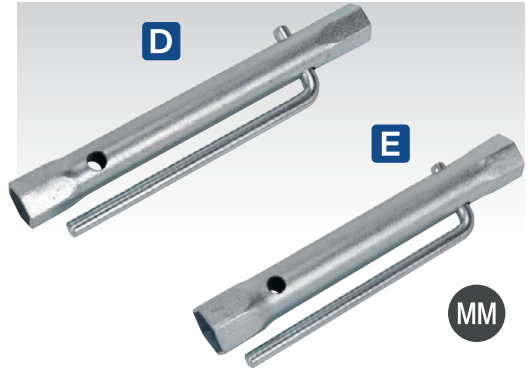
Length:	150mm
Sizes:	14 x 16, 16 x 18, 17 x 21mm



**B MS157**

**16/18mm Double End Long Reach Spark Plug Box Spanner with L-Bar**

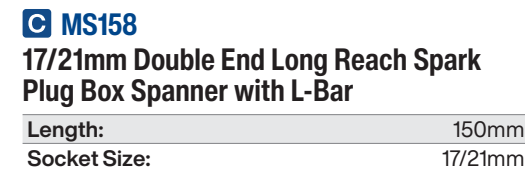
Length:	205mm
Socket Size:	16/18mm



**D MS160**

**14/16mm Double End Long Reach Spark Plug Box Spanner with L-Bar**

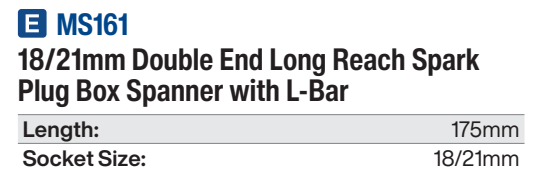
Length:	180mm
Socket Size:	14/16mm



**C MS158**

**17/21mm Double End Long Reach Spark Plug Box Spanner with L-Bar**

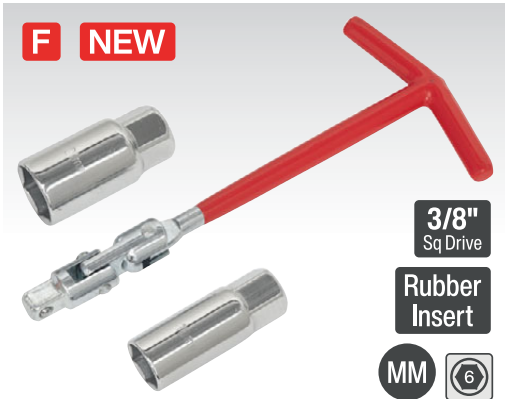
Length:	150mm
Socket Size:	17/21mm



**E MS161**

**18/21mm Double End Long Reach Spark Plug Box Spanner with L-Bar**

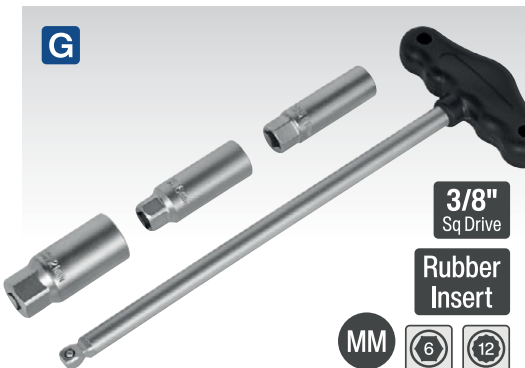
Length:	175mm
Socket Size:	18/21mm



**F SMC57**

**16/21mm Flexi T-Bar Spark Plug Wrench**

3/8" Sq Drive 16 and 21mm Chrome Vanadium Mirror Finish Spark Plug sockets, suitable for 10 and 14mm spark plugs. Rubber sleeved T-Handle Bar is designed to allow maximum leverage to be applied. Ideal for use in confined areas with the 360° Universal Joint. Internal rubber sleeves in the sockets hold and prevent damage to the spark plugs.



**G AK6550**

**4pc 3/8" Sq Drive T-Bar & Rubber Insert Spark Plug Socket Set**

Comfort grip T-handle 3/8" Sq drive. Features 2-in-1 wobble and rigid bar. Simply push the socket further onto the bar to fasten in the rigid position. Includes 14mm Bi-hex, 16 and 21mm 6-point Chrome Vanadium spark plug sockets with rubber inserts.

Drive:	3/8" Sq
Sizes:	14, 16, 21mm

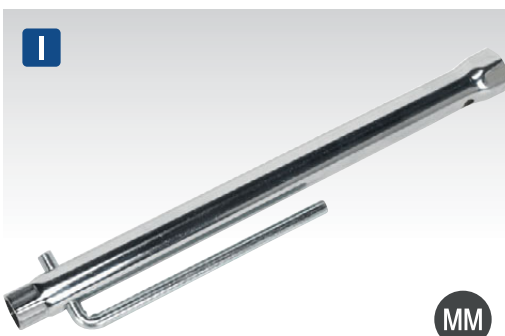


**H VS525**

**14 & 18mm Spark Plug Thread Chaser**

Suitable for cleaning corrosion and carbon build-up from spark plug threads. Also possible to restore minor cross threading damage. Use with a 21mm spark plug socket.

Size:	14, 18mm
Thread Lengths:	14-15mm, 18mm
Maximum Drive Diameter:	Ø21mm



**I AK1621**

**16 & 21mm Long Reach Double End Spark Plug Socket**

Designed for either 16mm or 21mm deep-seated spark plugs.

Sizes:	16, 21mm
Length:	300mm



**J MS003**

**14mm Reverse Action Spark Plug Thread Chaser**

Specially designed to repair damaged spark plug threads on modern engines. Unique design allows the tool to be passed through the plug thread into the combustion chamber, then expanded to the correct size starting on the inner, undamaged threads. Traditional thread restorers rely on luck for the restored and undamaged threads to align.

Size:	14mm
Length:	138mm



**K VS518**

**Spark Plug Feeler Gauge**

Specially designed for gapping spark plugs and suitable for both traditional copper and precious metal plugs. Features an electrode adjuster allowing the electrode to be adjusted without levering against the core which can be easily damaged. Blade dimensions 75 x 13mm.

Blade Sizes:	0.5, 0.6, 0.7, 0.8, 0.9, 1, 1.1mm
--------------	-----------------------------------



**360kg Capacity**  
**Folding**



**500kg Capacity**  
**Folding**

### A MR360

#### 360kg Capacity Steel Mesh Folding Loading Ramp

Manufactured from strong, durable powder coated steel and steel mesh. Provides safe and easy ramp access for in-line wheeled vehicles. Suitable for loading/unloading motorbikes or wheelbarrows from vans or trailers. Features a strap and hook to help secure ramp while in use. Folding design allows compact storage when not in use.

<b>Folded Dimensions (L x W x H):</b>	1050 x 280 x 90mm
<b>Extended Dimensions (L x W x H):</b>	2060 x 280 x 40mm
<b>Maximum Capacity:</b>	360kg
<b>Weight:</b>	11.5kg

### B FCR500

#### 500kg Capacity Folding Steel Loading Ramps

Manufactured from strong, durable powder coated steel. Provides safe and easy ramp access for in-line and multi axle vehicles. Suitable for loading/unloading motorbikes, quads, ride-on lawnmowers and mini tractors from vans or trailers. Features a chain and hook to help secure ramps while in use. Folding design allows compact storage when not in use.

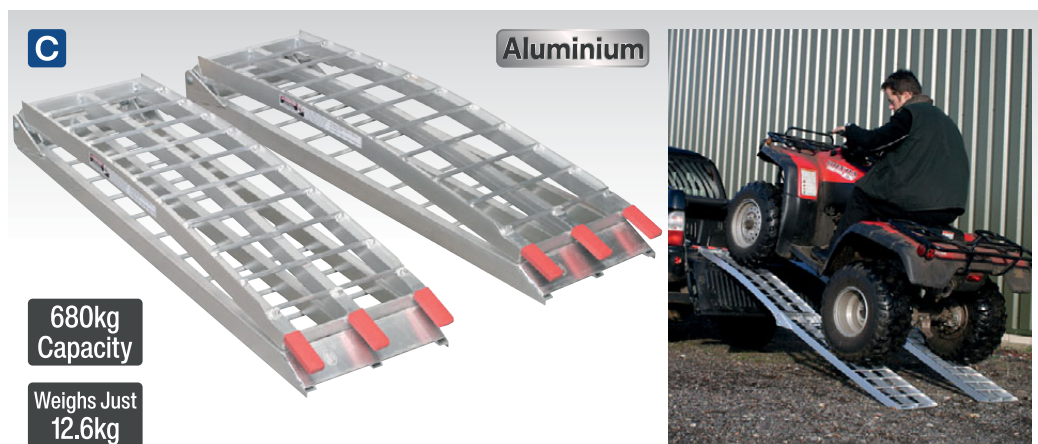
<b>Folded Dimensions (L x W x H):</b>	890 x 230 x 150mm
<b>Extended Dimensions (L x W x H):</b>	2000 x 230 x 50mm
<b>Maximum Capacity (Single/Pair):</b>	250/500kg
<b>Weight (Pair):</b>	27.4kg

### C LR680

#### 680kg Capacity per Pair Aluminium Loading Ramps

Manufactured from strong durable yet lightweight aluminium. Provides safe and easy ramp access for a variety of small vehicles. Suitable for loading/unloading quad bikes, ride-on lawnmowers or any other four wheeled vehicle up to a maximum of 680kg. Features extended claws at one end to help secure ramp when in use. Folding design for compact storage.

<b>Folded Dimensions (L x W x H):</b>	1160 x 290 x 150mm
<b>Extended Dimensions (L x W x H):</b>	2324 x 290 x 110mm
<b>Maximum Capacity (Single/Pair):</b>	680kg
<b>Weight (Pair):</b>	12.6kg



**C**

**Aluminium**

**680kg Capacity**

**Weighs Just 12.6kg**



**Aluminium**

**680kg Capacity**

**Weighs Just 13.5kg**

### D FLR680T

#### 680kg Capacity Wide Tri-Folding Motorcycle/Trike/ATV & Mini Tractor Aluminium Loading Ramp

Manufactured from strong durable yet lightweight aluminium. Provides safe and easy ramp access for a variety of small vehicles. Suitable for loading/unloading trikes, quad bikes, ride-on lawnmowers or any other three or four wheeled vehicle up to a maximum of 680kg (Note individual ramp section capacity is 226kg). Features safety securing chains and extended claws at one end to help secure ramp when in use. Folding design for compact storage. Maximum height to trailer or vehicle loading area is 863mm.

<b>Folded Dims (L x W x H):</b>	1760 x 380 x 70mm
<b>Extended Dims (L x W x H):</b>	1760 x 1140 x 20mm
<b>Maximum Capacity:</b>	680kg
<b>Weight:</b>	13.5kg



**A**



**B**



**C**

**NEW**



**A-C**

**Motorcycle Helmet & Gear Tidies**

Powder coated steel construction, for added corrosion resistance. Designed to organize the storage of gloves, clothing and helmets.

	<b>A</b>	<b>B</b>	<b>C</b>
<b>Model No:</b>	MS080	MS081	MS081FS
<b>Width:</b>	Top Shelf; 240mm, Bottom Shelf; 240mm	490mm	545mm
<b>Depth:</b>	Top Shelf; 405mm, Bottom Shelf; 160mm	350mm	460mm
<b>Height:</b>	-	-	1925mm

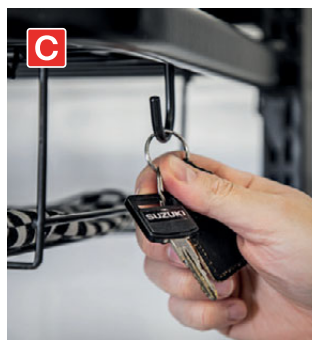
**A**



**B**



**C**



**C**



**D**



**D MS0811**

**Motorcycle Helmet Hook**

Wall and door mountable helmet hook suitable for all motorcycle helmets. Designed in order to keep your helmet safe and out of the way when not in use.

<b>Length:</b>	120mm
<b>Width:</b>	50mm
<b>Depth:</b>	175mm

**E**



**E MS0812**

**Motorcycle Helmet and Jacket Hook**

Wall and door mountable helmet hook suitable for all motorcycle helmets. Designed in order to keep your helmet and jacket safe and out of the way when not in use.

<b>Length:</b>	360mm
<b>Width:</b>	150mm
<b>Depth:</b>	70mm

**F**

**NEW**



**F SMC50**

**Boot Stand**

Holds and stores your boots whilst cleaning and drying. Reduces the risk of getting water in them whilst cleaning. Convenient centre handle for stability whilst in the process of cleaning and then can be used for storage of your helmet.

<b>Length:</b>	502mm
<b>Width:</b>	320mm
<b>Depth:</b>	335mm



**A-D SEE BELOW**

**Trike Covers**

Ideal for protection, rain or shine, against weathering and fading. STC03 is designed for smaller motorcycle derived trikes such as Virago or Shadow models, or newer reverse trikes with two front wheels. STC02 Cover is designed for the larger motorbike derived trikes such as Goldwing or Harley Davidson Tri Glide types. STC01 is suitable for all VW Flat-Four engine based trikes such as Rewaco, Boom and WK models. The STC01XL is for use on new generation Rewaco RF1, ST, GT, LT and Touring models, also Boom Lowrider, Grizzly and Mustang models. Each cover has a clear PVC pocket to accept Model No. SPP01 Solar Panel (requires Model No. SPP01.A Adaptor), to enable battery charging while cover is fitted to the motorcycle, without the need for mains power supply. Elastic corners with strap and buckle for easy and secure fitting. Made from Oxford 300D material. Supplied in a storage bag.



	<b>A</b>	<b>B</b>	<b>C</b>	<b>D</b>
<b>Model No.</b>	STC03	STC02	STC01	STC01XL
<b>Size:</b>	Small	Medium	Large	X-Large
<b>Length:</b>	2500mm	2750mm	3700mm	4500mm
<b>Front Top Width:</b>	1000mm	1000mm	1050mm	1050mm
<b>Front Bottom Width:</b>	470mm	470mm	450mm	450mm
<b>Rear Bottom Width:</b>	1550mm	1750mm	2000mm	2000mm
<b>Front Height:</b>	1250mm	1300mm	1300mm	1400mm
<b>Rear Height:</b>	1400mm	1400mm	1450mm	1550mm

**E SPP01**  
**12V/1.5W Solar Power Panel**

Amorphous solar panel converts daylight directly into 12V electricity. Suitable for maintaining charge in a wide range of batteries and power packs. Ideal for batteries stored in boats and caravans and for batteries in vehicles in long-term storage. IP44 Rating (non-waterproof). For use behind car windscreen or other protection. Supplied with suction pad fixings, battery clips and vehicle accessory socket plug (only suitable for vehicles with "permanent live" accessory socket).



**F SPP01.A**  
**Watertight Hardwired Terminal Connector for SPP01, SPP02 & SPP03**

A battery terminal connection lead with in-line fuse unit and weatherproof cap to offer protection from water ingress when the connector is not in use. Can be left on the vehicle and simply connected to Model No's SPP01, SPP02 or SPP03 when required.

<b>Length:</b>	570mm
<b>Fuse:</b>	7.5A





**A**



Supplied with Storage Bag.



Shown with wheel lock fitted (not included).



**A SEE BELOW**

**Motorcycle Covers with Solar Panel Pocket**

Ideal for protection, rain or shine, against weathering and fading. Double layer cover for extra protection. Inner layer is made from soft anti-scratch material to protect motorcycle's paintwork. Has a clear PVC pocket to accept Model No. SPP01 Solar Panel (requires Model No. SPP01.A Adaptor) to enable battery charging while cover is fitted to the motorcycle without the need for mains power supply. Elastic corners with strap and buckle for easy and secure fitting. Eyelet enabling wheel lock to be fitted. Supplied in a storage bag.

Model No:	Size:	Dimensions (L x W x H):
MCS	Small	1830 x 890 x 1300mm
MCM	Medium	2320 x 1000 x 1350mm
MCL	Large	2460 x 1050 x 1370mm



**B**

**B SMC40 Motorcycle Waist Bag - Small**

Lightweight and compact bag specifically designed for motorcycle users. Made up of large main compartment as well as smaller quick access hook-and-loop pocket and small zipped pocket. Perfect for storing phone, wallet and keys among other items while on the go. Adjustable waist strap. Made from 600D Polyester.

Overall Size (W x D x H):	200 x 76 x 115mm
No. of Pockets:	3



**C**

**C SMC41 Motorcycle Waist Bag - Large**

Lightweight and compact waist bag specifically designed for motorcycle users. Made up of large main compartment containing two internal compartments as well as five pen holders and a smaller secondary external pocket. Perfect for storing phone, wallet and keys among other items while on the go. Adjustable waist strap as well as a detachable shoulder strap. Made from 600D Polyester.

Overall Size (W x D x H):	280 x 127 x 165mm
No. of Pockets:	2 External, 2 Internal



**D**

**D RSBP1 430mm Backpack with Reflective Strips**

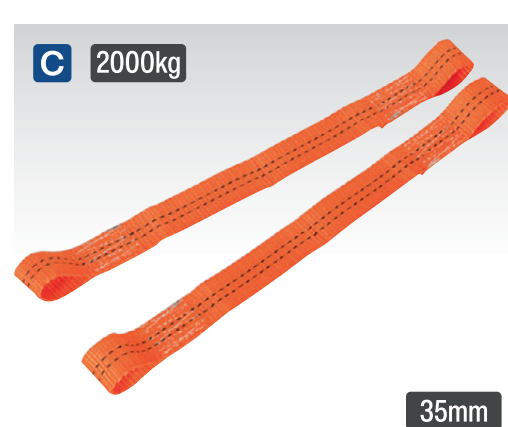
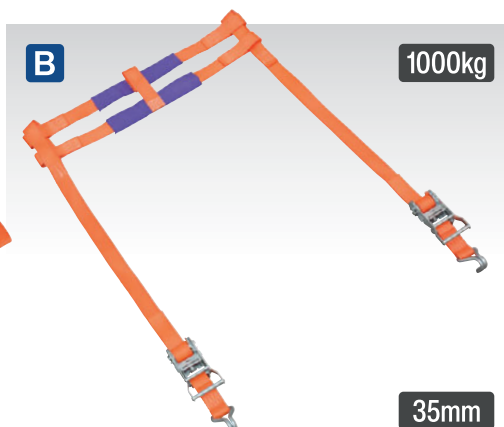
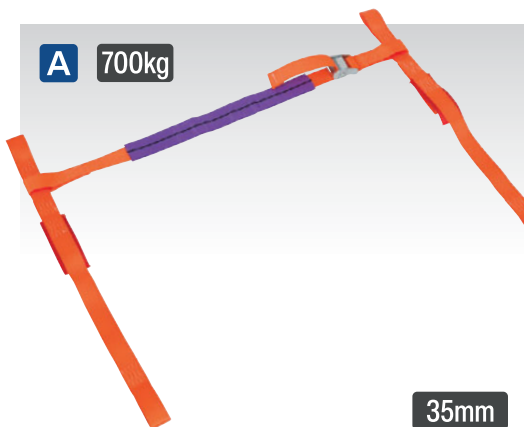
Durable 23L polyester rucksack with a padded internal laptop pocket, suits most 15" laptops. Design includes zipped main pockets, high visibility reflective strip on adjustable straps, back pocket and two elasticated side pockets.

Overall Size (W x D x H):	305 x 180 x 430mm
No. of Pockets:	5



**Tool Storage Bags & Boxes**

We have a complete range of Tool Storage Bags, Cases and Boxes, see pages 1063 to 1069 for details.



**A TDMCHB**  
**Motorcycle Handlebar Tie Down**

Manufactured from polyester webbing with stitched reinforcement around loops. To be used in conjunction with suitable ratchet tie downs. Suitable for workshop use, to provide safe restraining points for securing motorcycles to a workbench, flat-bed or trailer. Simple cam buckle fastener tensions the webbing to provide superior load restraint.

Load Test:	700kg
Maximum Handlebar Restraint Width:	750mm
Maximum Tension:	350kg
Webbing Width:	35mm

**B TDMCRW**  
**Motorcycle Rear Wheel Tie Down**

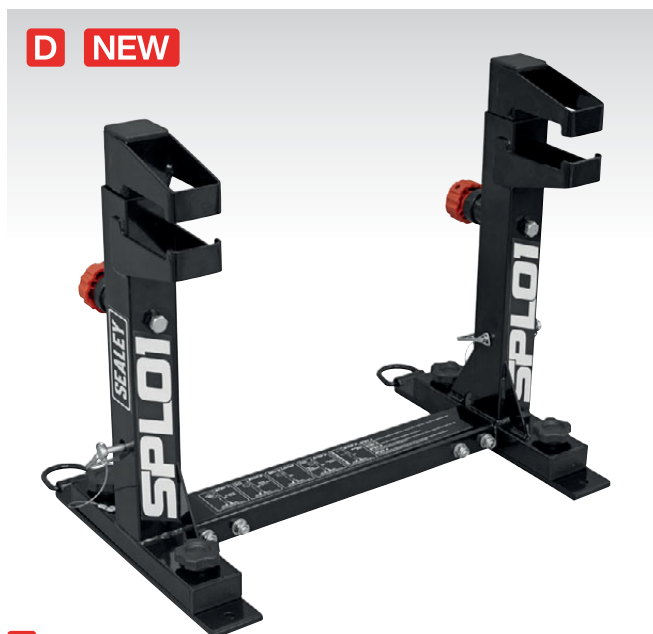
Manufactured from polyester webbing. Stitched reinforcement at joins and loops. Suitable for workshop use or for securing motorcycle to flat-bed or trailer. Secures rear wheel to anchor point without compressing the suspension units, thus reducing the risk of seal damage. Ratchet mechanically tensions the webbing using a simple drum and ratchet mechanism for superior load restraint.

Load Test:	1000kg
Maximum Tension:	500kg
Webbing Width:	35mm

**C TDL01**  
**Tie Down Securing Loop - Pair**

Manufactured from polyester webbing. Use to either loop or create a slip knot at any appropriate point of the load and then attach to the hook of the strap. Suitable for use on motorcycles or offset loads to help prevent scratches to paint finishes and chrome.

Quantity:	2
Maximum Tension:	1000kg
Breaking Strain:	2000kg
Webbing Width:	35mm
Webbing Length:	450mm



**D SPL01**  
**Fast Lock Tie Down System for Motocross Bikes**

Securely holds your motocross bike on to a trailer or van, with the Fast Lock system, no ratchet straps or wheel chock required. Provided with mounting plates and quick release latches, allowing for fast installation and removal of the clamp. Freeing your vehicle for other uses. Each mounting plate has a D-ring creating additional anchor points to the trailer floor.

**E TDC01**  
**Handlebar Tie Down Clamp Pair**

Handlebar tie down clamp used to minimise possible damage to motorcycle handlebars and grips. Provides a secure fixing point to tie down motorcycle whilst in transit.

**F SMC56**  
**Anti-Dive Fork Brace**

Designed to stop the over-compression of motorcycle forks whilst in transit. For use on off-road style motorcycles with a minimum front wheel to mudguard clearance of 255mm.

Size (W x D x H):	230 x 70 x 290mm
-------------------	------------------

**A**



**A TST80**  
**Waterproof Document & Tool Storage Tube**

Waterproof document and tool storage tube suitable to mount to motorcycles. Cable ties, mountings and bolt provided.

Internal Tube Length:	320mm
Internal Tube Diameter:	Ø80mm
Fixing Point Distance:	315mm
Overall Size (W x D x H):	400 x 100 x 110mm

**B**



**B CLA109DL**  
**10.5 x 10.5 x 1500mm**  
**Motorcycle Chain & Disc Lock**  
**4\* ART Approved**

Heavy-duty 10.5mm square link chain, fitted with durable nylon sleeve for avoiding accidental scratching and damage to the bike. Features hardened zinc alloy bodied disc lock with anti-drill, anti-saw and anti-pick protection on the locking cylinder. 4\* ART Approval. Supplied with two keys.

Chain Size:	10.5 x 10.5 x 1500mm
ART Approval:	4*

**C**



**C MCGA01**  
**Motorcycle Ground Anchor**  
**4 Security Bolts**

Heavy-duty hardened steel bolt down anchor, supplied with all fixings. Provides a secure locking point for items such as motorcycles, bicycles, boats, caravans and trailers.

**Contents:** Anchor, Security Bolts, Ball-Bearings



**D**



**D CL129DL**  
**12 x 12 x 900mm**  
**Motorcycle Chain Lock**

Heavy-duty 12mm square link chain, fitted with durable nylon sleeve for avoiding accidental scratching and damage to the bike. Features extra-long 12mm thick shrouded shackle with anti-drill, anti-saw and anti-pick protection on the locking cylinder. Supplied with two keys.

Chain Size:	12 x 12 x 900mm
-------------	-----------------

**E**



**E CL9512**  
**10mm x 1500mm**  
**Motorcycle Chain Lock**

Protective covered chain, avoids accidental scratching and damage to the bike. Triple bearing locking system encased in a double protection body, helps prevent tampering. Supplied with two keys.

Chain Size:	Ø10 x 1500mm
-------------	--------------

**F**



**F MCGA02**  
**Motorcycle Locking Ground Anchor**  
**4 Security Bolts**

Heavy-duty hardened steel bolt down anchor with key operated locking pin. Supplied with all fixings. Provides a secure locking point for items such as motorcycles, bicycles, boats, caravans and trailers.

**Contents:** Anchor, Security Bolts, Locking Pin, Ball-Bearings, Keys (x2)



**G NEW**



**G SAS01**  
**Swingarm Stands**

All steel construction with bolted height adjustment. Ideal for long term motorcycle storage. Sold in pairs.

Weight:	2.04kg
---------	--------

**H**

25mm  
 4m  
 800kg



**H TD484SD**  
**25mm x 4m Polyester Webbing**  
**Ratchet Tie Down with S-Hooks 800kg**  
**Breaking Strength - 2 Pairs**

Manufactured from polyester webbing with stitched reinforcement around hooks. Suitable for securing loads and tarpaulins onto flatbeds or trailers and for general load restraint. Ratchet mechanically tensions the webbing using a simple drum and ratchet mechanism providing superior load restraint.

Quantity:	4
Maximum Tension:	400kg
Load Test:	800kg
Webbing Width:	25mm
Webbing Length:	4m
Hook:	S-Type

**I**



**I DL503**  
**Ø10mm Motorcycle Disc**  
**Brake Lock**

Features hardened locking pin and impact resistant die-cast body. Visible bright colour acts as a reminder that the unit is attached to the bike. Supplied with two keys and storage pouch.

Pin Diameter:	Ø10mm
Throat Depth from Centre of Pin:	67mm

A



A BC110

**Workshop Pump**

For more information, see page 552.

F



F MS087

**Motorcycle CO<sub>2</sub> Emergency Tyre Inflator Kit**

CO<sub>2</sub> Tyre inflator kit including adaptor for Schrader type valves (used by most cars and motorcycles and some bicycles). Includes 2 x 16g canisters of CO<sub>2</sub>. Supplied in zipped storage pouch.

CO <sub>2</sub> Threaded Cartridge:	2 x 16g
-------------------------------------	---------

I



I MDRP01

**2.5L Motorcycle Oil Drain Pan**

Heavy-duty polypropylene construction, ideal for draining oils and antifreeze. Sloped design to easily tip contents out of pan. Thin contoured design to prevent accidental movement while in use.

Capacity:	2.5L
Size (L x W x H):	405 x 220 x 70mm

B



B MAC04

**12V Heavy-Duty Tyre Inflator/Mini Air Compressor**

For more information, see page 553.

D



D TSTPG12

**Digital Tyre Pressure & Tread Depth Gauge with LED**

For more information, see page 559.

G



G MS163

**12V Micro Air Compressor with Worklight**

Compact design incorporating integral storage for air output hose. Features a worklight and pressure gauge which reads up to 5.5bar(80psi). Powered by a 12V motor suitable for inflating tyres on motorcycles and cars. Supplied with vehicle accessory socket plug and battery clips.

Hose Length:	100mm
Power Cord Length:	2.8m
Operating Voltage:	12V



C



C FP1

**Single Barrel Foot Pump**

For more information, see page 552.

E



E TST10

**Temporary Puncture Repair Kit**

For more information, see page 563.

H

0-120psi



USB



H CT1120

**Compact Rechargeable Tyre Inflator & Power Bank with Worklight**

Compact digital tyre inflator with output of 12L/min. Pressure gauge reads up to 120psi (kPa, kg/cm<sup>2</sup> and bar equivalents). 140mm Extension tube with Schrader connection. Micro USB rechargeable (cable supplied). USB output for charging mobile phone etc. (5V/2A). Supplied with sports ball pin adaptor, balloon/inflatables adaptor and also a Presta valve adaptor for road bicycle tyres. Built-in 1W SMD LED for ease of use at night. Preset the desired psi to begin operation and unit will cut-out automatically once that pressure is reached.

Hose Length:	140mm
Typical Inflation Time:	0-30psi in 619sec (175/70/R13)
Maximum Pressure:	120psi
Airflow:	0.42cfm/12L/min
USB Output:	5V/2A
Battery:	2000mAh

**A**



**A TC965**

**Motorcycle & Small Hub Tyre Changer**

Manual type tyre changer suitable for a wide variety of tyres and wheels including those fitted to motorcycles, ATVs, go-karts and golf buggies. Works on bearing or hub centred wheels and is supplied with two centre posts. Includes manual bead breaker and supplied with tyre bar for mounting and de-mounting. Fast and simple operation. To prevent damage to the rims of alloy wheels, use optional Tyre Bar, Model No. TC963.

Minimum Wheel Size:	Ø102mm
Maximum Wheel Size:	Ø524mm(21")
Centre Post Sizes:	Ø12, 16, 19, 24mm
Optional Tyre Bar for Aluminium Wheels:	TC963

**E**



**E VS1818**

**Deluxe Tyre Lever**

Quality drop-forged and tempered steel with flat rounded tip. Moulded handle enables extra grip. Suitable for use with motorcycle, small agricultural or leisure tyres.

Length:	375mm
Width:	25mm



**B**



**B TC968**

**Tyre Bead Breaker**

Manual bead breaker, especially suitable for motorcycle tyres. Lever action with parallel linkage keeps head at the optimum angle for breaking the bead.

Maximum Bead Thickness:	160mm
Maximum Tyre Profile:	190mm

**C**



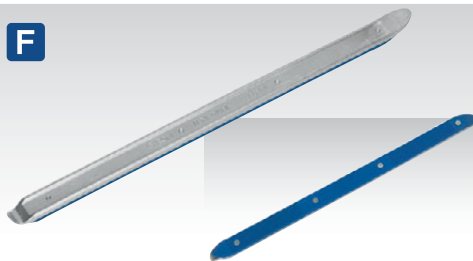
**C VS1819**

**Motorcycle Wheel Balancer**

Professional motorcycle wheel balancer. Suitable for most motorcycle wheels. Includes two cones and spindle for precise, easy alignment and balancing. Uses gravity to find the heavy point of a wheel and tyre.

Maximum Cone Size:	Ø30mm
Centre Spindle to Base:	400mm

**F**



**F SEE BELOW**

**Motorcycle Tyre Levers with Plastic Moulding**

Quality Chrome Vanadium steel tyre levers with hard plastic moulding hook and taper ends. Designed to reduce the risk of damage to motorcycle wheel rims when removing or fitting tyres.

Model No:	Length:	Width:	Depth:
MS380	380mm	25mm	12mm
MS500	500mm	28mm	15mm



For our full range of STW Wrenches, see pages 72 to 77.

**D**



**D WTS01**

**Motorcycle & Bicycle Wheel Balancer & Truing Stand**

Professional design ideal for the workshop technician or competent DIY enthusiast. Enables the accurate balancing after tyre fitting and truing of rebuilt, warped or buckled spoke wheels. Includes two cones and spindle for precise, easy alignment and balancing. Uses gravity to find the heavy point of a wheel and tyre. Also has threaded centring stabilizer bolts to securely hold the wheel whilst truing the rim.

Maximum Cone Size Balancer:	Ø37.5mm
Centre Balancer Spindle to Base:	585mm
Maximum Cone Size Truing Axle:	Ø37mm
Centre Truing Axle to Base:	445mm

**G**



**G VS1807**

**2pc Rim Protector**

Moulded protectors with connecting cord, designed to reduce the risk of damage to motorcycle wheel rims when removing or fitting tyres with tyre levers.

Length:	145mm
---------	-------