

HEATING & COOLING

 [back to
Section List](#)



Air Conditioners

1265

Air Coolers

1264-1266

Blowers

1268

Ceramic Heaters

1260

Dehumidifiers

1266-1267

Diesel Heaters

1250-1253

Fans - Desk/Wall/Floor

1269-1275

Industrial Fans

1271-1275

Infrared Heaters

1261-1263

Kerosene/Diesel Heaters

1250-1253

Propane Heaters

1254-1255

Ventilators

1268

Electric Heaters

1256-1263

A-I SEE BELOW

Space Warmer® Kerosene/Diesel Heaters

Workshop tried and tested, our range of Kerosene/Diesel heaters represents excellent value. The range includes two economy portable units, Model No's AB350 and AB708, which are both supplied without wheels. All models have a digital adjustable thermostat (°C) and are also fitted with digital room temperature (°C) display/error code read-out (except Model No. AB2050, this has no digital display but can still be thermostatically controlled). Proven pump systems handle either kerosene or diesel with only minor adjustment of air compressor. All models are fitted with a fuel tank gauge. Model No's AB7081, AB1008, AB1258, AB1758, AB2158, AB2380 and AB3412 are fitted with fuel tank drain plug, sturdy handle and heavy-duty wheels for easy manoeuvrability. AB2380 and AB3412 are also equipped with cable storage on handle plus Danfoss® oil nozzle and gear pump for stable fuel delivery.

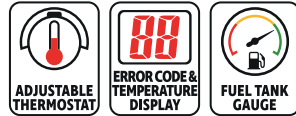
<p>ERROR CODE & TEMPERATURE DISPLAY</p>	<p>Fast identification of error codes. Also displays current and desired room temperature.</p>	<p>THERMOSTAT AMBIENT TEMPERATURE</p>	<p>FUEL TANK GAUGE</p>	<p>Ensures monitoring of the fuel level, without having to remove the fuel cap.</p>
<p>ADJUSTABLE THERMOSTAT</p>	<p>Ensures work area can be kept at a constant and comfortable temperature.</p>			
<p>Error Code Reader & Thermostat Control</p>		<p>Fuel Gauge</p>		

<p>A NEW 35k Btu/hr</p> <p>KEROSENE DIESEL</p> <p>10kW</p> <p> </p>	<p>B 70k Btu/hr</p> <p>KEROSENE DIESEL</p> <p>20kW</p> <p> </p>	<p>C 70k Btu/hr</p> <p>KEROSENE DIESEL</p> <p>20kW</p> <p> </p>
<p>D 100k Btu/hr</p> <p>KEROSENE DIESEL</p> <p>30kW</p> <p> </p>	<p>E 135k Btu/hr</p> <p>KEROSENE DIESEL</p> <p>40kW</p> <p> </p>	

F 170k Btu/hr



KEROSENE
DIESEL

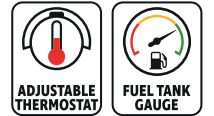


50kW

G **NEW** 205k Btu/hr



KEROSENE
DIESEL

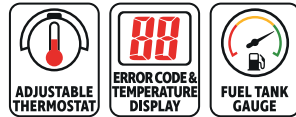


60kW

H **NEW** 240k Btu/hr



KEROSENE
DIESEL

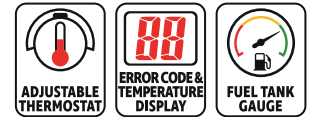


70kW

I 340k Btu/hr



KEROSENE
DIESEL



100kW

	A	B	C	D	E	F	G	H	I
Model No:	AB350	AB708	AB7081	AB1008	AB1258	AB1758	AB2050	AB2380	AB3412
Output:	10kW	20kW	20kW	30kW	40kW	50kW	60kW	70kW	100kW
Output:	35,000Btu/hr	70,000Btu/hr	70,000Btu/hr	100,000Btu/hr	135,000Btu/hr	170,000Btu/hr	205,000Btu/hr	240,000Btu/hr	340,000Btu/hr
Fuel Tank:	22L	19L	22L	38L	50L	22L	56L	69L	69L
Fuel:	Kerosene/ Diesel	Kerosene/ Diesel	Kerosene/ Diesel	Kerosene/ Diesel	Kerosene/ Diesel	Kerosene/ Diesel	Kerosene/ Diesel	Kerosene/ Diesel	Kerosene/ Diesel
Supply/Plug Type:	230V/3-Pin	230V/3-Pin	230V/3-Pin	230V/3-Pin	230V/3-Pin	230V/3-Pin	230V/3-Pin	230V/3-Pin	230V/3-Pin
Power Supply Cable Length:	1m	1m	1m	1m	1m	1m	1m	1m	1m
Running Time per Filling (Max.):	23hr	11hr	11hr	14hr	11hr	11hr	10hr	10hr	7hr
Transport Wheels:	✗	✗	✓	✓	✓	✓	✓	✓	✓
Airflow:	265cfm	323cfm	323cfm	441cfm	529cfm	647cfm	700cfm	765cfm	825cfm
Automatic Shut-Off:	✓	✓	✓	✓	✓	✓	✓	✓	✓
Heated Area:	8,800ft ³	21,200ft ³	21,200ft ³	28,250ft ³	42,300ft ³	49,500ft ³	56,500ft ³	70,600ft ³	88,200ft ³
Heated Area:	250m ³	600m ³	600m ³	800m ³	1,200m ³	1,400m ³	1,600m ³	2,000m ³	2,500m ³
Weight:	14.8kg	14.9kg	15.4kg	22.2kg	27.8kg	27.8kg	27.6kg	41kg	41kg

A NEW

13kW Diesel 44.5k Btu/hr



B NEW

16kW Diesel 55k Btu/hr



3 YEAR GUARANTEE*

A-B SEE BELOW

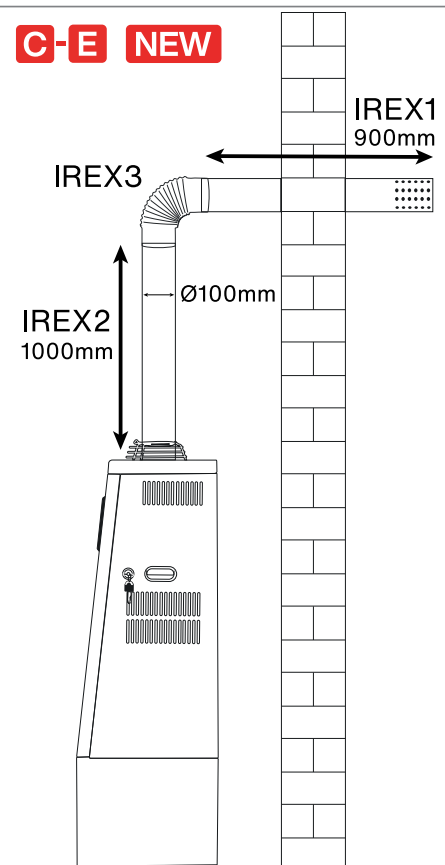
Industrial Infrared Diesel Heaters

Versatile and compact diesel-fuelled Infrared technology heater has no electric fan, meaning there is no air movement and the heat is spread evenly in all directions, quietly and dust-free. Ideal for use in well-ventilated indoor areas including garages, workshops, warehouses and marquees. Extremely inexpensive to run, using only around 1L of fuel per hour. Clean burn and precisely controlled fuel supply, ensure that no unpleasant odours or carbon monoxide enter the air. Equipped with advanced safety features including overheat protection, auto-misfire, tilt, shock, low fuel shut-off sensors and flame-out fuel cut. Features 24hr timer and temperature control thermostat. Soft-touch control panel with LED display. Fitted with four castor wheels for easy manoeuvrability.



	A	B
Model No:	IR13	IR16
Output:	44,500btu/hr(13kW)	55,000btu/hr(16kW)
Fuel:	Diesel	Diesel
Fuel Tank:	50L	50L
Supply/Plug Type:	230V/3-Pin	230V/3-Pin
Power Supply Cable Length:	1.8m	1.8m
Running Time per Filling (Maximum):	52hr	42hr
Transport Wheels:	✓	✓
Automatic Shut-Off:	✓	✓
Heated Area:	11,477ft ³ (325m ³)	14,125ft ³ (400m ³)
Weight:	46kg	50kg

C-E NEW



C NEW



D NEW



E NEW

C-E SEE BELOW
Ø100mm Exhaust/Flue Sections

Ø100mm 201 Stainless steel exhaust/flue sections.



Model No:	Type:	Size:
C IREX1	End Pipe	900mm
D IREX2	Flue Extension	1000mm
E IREX3	90° Bend	Ø100mm

A



70k Btu/hr
PARAFFIN
KEROSENE
DIESEL



Optional trolley for IR20, order Model No. IR20T.

A IR20

70,000Btu/hr Space Warmer® Paraffin/Kerosene/Diesel Heater

Versatile multi-fuel heater designed to run on paraffin, kerosene or diesel. Clean burning unit suitable for well-ventilated applications. 15L Tank allows approximately 8hrs running time, making this unit extremely economical. Safety features include automatic overheat safety shut-off and quiet operation. Optional trolley available for easy manoeuvrability, Model No. IR20T.

Output:	70,000Btu/hr(20.5kW)
Fuel Tank:	15L
Fuel:	Paraffin/Kerosene/Diesel
Supply/Plug Type:	230V/3-Pin
Power Supply Cable Length:	2m
Running Time per Filling (Maximum):	8hr
Automatic Shut-Off:	✓
Heated Area:	14,000ft ³ (396m ³)
Weight:	14kg
Trolley (Optional):	IR20T

B



125k Btu/hr
PARAFFIN
KEROSENE
DIESEL

B IR37

125,000Btu/hr Space Warmer® Paraffin/Kerosene/Diesel Heater with Wheels

Versatile multi-fuel heater designed to run on paraffin, kerosene or diesel. Clean burning unit suitable for well-ventilated applications. 53L Tank allows approximately 20hrs running time, making this unit extremely economical. Safety features include automatic overheat safety shut-off and quiet operation.

Output:	95,000Btu/hr(20.5kW)/125,000Btu/hr(37kW)
Fuel Tank:	53L
Fuel:	Paraffin/Kerosene/Diesel
Supply/Plug Type:	230V/3-Pin
Power Supply Cable Length:	2m
Running Time per Filling (Maximum):	20hr
Transport Wheels:	✓
Automatic Shut-Off:	✓
Heated Area:	25,000ft ³ (708m ³)
Weight:	36.2kg

C



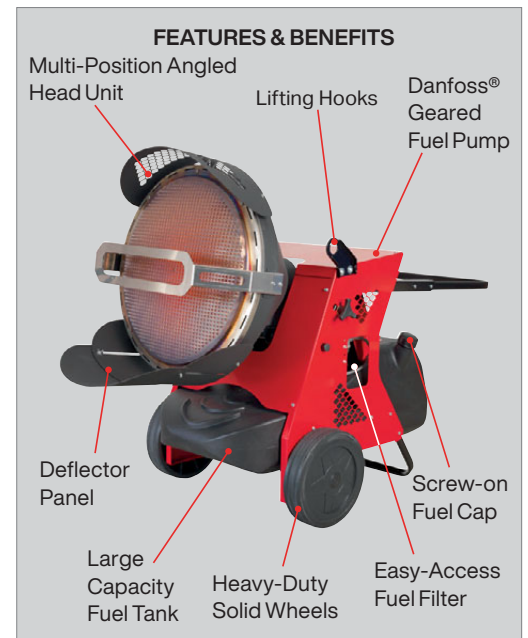
155k Btu/hr
PARAFFIN
KEROSENE
DIESEL



C IR55

45.5kW Infrared Paraffin/Kerosene/Diesel Heater

Infrared heater suitable for well ventilated applications. Designed to increase heat efficiency while eliminating the fragility and brittleness of ceramic cones. Clean burning unit operates on paraffin, kerosene or diesel. Produces an impressive output of 155,252 Btu/hr. 65L Tank allows a maximum of 15hrs running time. Features electronic flame control with photo resistance sensor. Outer cover cooled by forced air over the complete surface of the cone. Complies with rigorous standards and is fitted with a safety cut-out.



Output:	45.5kW(155,252Btu/hr)
Fuel Tank:	65L
Fuel:	Paraffin/Kerosene/Diesel
Supply/Plug Type:	230V/3-Pin
Power Supply Cable Length:	1.2m
Running Time per Filling (Maximum):	15hr
Automatic Shut-Off:	✓
Transport Wheels:	✓
Heated Distance:	5m
Weight:	75kg

A

14k Btu/hr

PROPANE

Piezolectric Ignition

Hose and Regulator Included.

A LP13
14,330Btu/hr Space Warmer® Propane Heater Bottle Mounting
 Ceramic plaque space warmer/propane heater. Fitted with a piezoelectric button igniter which makes it quick and easy to ignite. For added convenience it is supplied with 37mbar fixed regulator and 1.5m gas hose. Gas bottle not included. Self-standing with steel tube and built-in handle makes it is easy and hassle free to move around any workshop or garage. Output of 14,330Btu/hr.

Fuel:	Propane
Output:	10,250-14,330Btu/hr
Fuel Consumption:	0.22-0.33kg/hr

B

14k Btu/hr

PROPANE

Piezolectric Ignition

Hose and Regulator Included.

B LP14
14,330Btu/hr Space Warmer® Propane Heater with Stand
 Ceramic plaque space warmer/propane heater. Fitted with a piezoelectric button igniter which makes it quick and easy to ignite. For added convenience it is supplied with 37mbar fixed regulator and 1.5m gas hose. Gas bottle not included. Self-standing with steel tube and built-in handle makes it is easy and hassle free to move around any workshop or garage. Output of 14,330Btu/hr.

Fuel:	Propane
Output:	10,250-14,330Btu/hr
Fuel Consumption:	0.22-0.33kg/hr

C **35k Btu/hr** **PROPANE**
10.2kW
Piezolectric Ignition

D **125k Btu/hr**
36.6kW
PROPANE
Piezolectric Ignition

C-D Hose and Regulator Included.

C-D SEE BELOW
Space Warmer® Industrial Propane Heaters

Industrial heaters suitable for well ventilated applications. Reaches maximum heat output within seconds of being turned on. Highly portable, no power supply required, just connect to gas bottle (not included). Heavy-duty frame and steel mesh guard with durable paint finish. Fitted with a piezoelectric ignition system for trouble-free starting. Features safety thermocouple, flame failure valve and tip-over switch. Super quiet operation, includes no moving parts. Supplied with an approved propane gas regulator and hose. Tested and certified to CE/EN standards.

	C	D
Model No:	LPH35	LPH125
Output:	10.25kW	36.6kW
Output:	35,000Btu/hr	125,000Btu/hr
Fuel Consumption:	0.74kg/hr	2.6kg/hr
Width:	230mm	400mm
Depth:	308mm	475mm
Height:	850mm	1090mm
Fuel:	Propane	Propane
Weight:	8.8kg	17.4kg

E

14k Btu/hr
4.2kW
BUTANE
Piezolectric Ignition

Hose and Regulator Included.

E CH4200
4.2kW Cabinet Gas Heater
 Ceramic plaque cabinet heater ideal for office or home use. Accepts 15kg Butane bottle (not included) which fits into the rear of the unit. Features piezoelectric ignition, removing the need for batteries. Three heat output settings ranging from 1.55 to 4.2kW (5,288 to 14,330Btu/hr). Safety features fitted include a flame failure device, anti-tilt switch and oxygen depletion system. Supplied with hose and regulator.

Fuel:	Butane
Output:	1.55/2.9/4.2kW(5,288-14,330Btu/hr)
Fuel Consumption:	0.11/0.2/0.305kg/hr
Overall Size (W x D x H):	430 x 295 x 750mm

F-G SEE BELOW
30,000-68,000Btu/hr (9-20kW) Space Warmer® Cordless Propane Heater - 230V/Rechargeable
 30,000-68,000Btu/hr (9-20kW) Space Warmer® Propane Heater 230V mains operated with option of mobile use by purchasing 20V battery and charger, sold separately. Heats an area of up to 350m³. Fan assisted, fitted with a piezoelectric ignition system for trouble-free starting and features a direct gas head assembly. Features safety solenoid preventing the unit from leaking gas without first being electrically started. Mains or cordless power means increased versatility in positioning heater where it is most required. Mains lead/transformer is included. Part of the SV20 Series offering a one battery fits all solution, keeping costs down without compromising on performance, see pages 844 to 872 for the rest of the range. To run cordless requires compatible 20V battery and mains charger, sold separately. Also supplied with an approved propane gas regulator and hose. Many users have found the advantages of propane heaters far outweigh the small additional running costs, as the fuel is more completely burned and does not leave an oily residue as experienced with paraffin, kerosene or diesel heaters. There is no odour, except for the few seconds during start-up and the unit runs a little more quietly since it does not need a compressor to drive the fuel to the burner. Durable paint finish. Tested and certified to CE/EN standards. Manufactured to BS EN 1596.

F-G
NEW
SV20 SERIES
PROPANE

Piezolectric Ignition
Over-Heat Shut-Off
Variable HEAT Settings

Model No:	Type:	Contents:
F LP69C	Body Only	230V/20V Propane Heater
G LP69CCOMBO	Kit	LP69C - 230V/20V Propane Heater CP20VBP4 - 4Ah Battery CP20VMC - Battery Charger

A-E SEE BELOW

Space Warmer® Propane Heaters

Many users have found the advantages of propane heaters far outweigh the small additional running costs. The fuel is more completely burned and does not leave an oily residue as experienced with paraffin heaters. There is no odour, except for the few seconds during start-up and the units run a little more quietly, since they do not need a compressor to drive the fuel to the burner. Heaters are fan assisted, fitted with a piezoelectric ignition system for trouble-free starting and feature a direct gas head assembly. Safety solenoids prevent the heaters from leaking gas without first being electrically started. Supplied with an approved propane gas regulator and hose. All models are tested and certified to CE/EN standards. Manufactured to BS EN 1596.



Fully Approved hose and regulator included.



Ensures work area can be kept at a constant and comfortable temperature.



Ensures safe shut down of unit if overheating occurs, preventing any potential danger.



Piezoelectric ignition make starting the unit easy and trouble-free.

A

40.5k Btu/hr
11.5kW
PROPANE

Over-Heat Shut-Off
Hose & Regulator Included
Piezoelectric Ignition

D

170k Btu/hr
50kW
PROPANE

Over-Heat Shut-Off
Hose & Regulator Included
Piezoelectric Ignition
Variable HEAT Settings

B

54.5k Btu/hr
16kW
PROPANE

Over-Heat Shut-Off
Hose & Regulator Included
Piezoelectric Ignition
Variable HEAT Settings

E

400k Btu/hr
117kW
PROPANE

Over-Heat Shut-Off
Hose & Regulator Included
Piezoelectric Ignition

C

102k Btu/hr
30kW
PROPANE

Over-Heat Shut-Off
Hose & Regulator Included
Piezoelectric Ignition
Variable HEAT Settings

	A	B	SEE PAGE 1254	C	D	E
Model No:	LP41	LP55	LP69C	LP100	LP170	LP401
Output:	11.5kW	16kW	9-20kW	18-30kW	30-50kW	61.5-117kW
Output:	40,500Btu/hr	54,500Btu/hr	30,000-68,000Btu/hr	61,000-102,000Btu/hr	102,000-170,000Btu/hr	210,000-400,000Btu/hr
Airflow:	300cfm	300cfm	294cfm	380cfm	400cfm	1,400cfm
Fuel Consumption:	0.91kg/hr	1.32kg/hr	0.65-1.45kg/hr	1.3-2.18kg/hr	2.18-3.63kg/hr	5.2-8.4kg/hr
Supply/Plug Type:	230V/3-Pin	230V/3-Pin	230V/3-Pin/20V	230V/3-Pin	230V/3-Pin	230V/3-Pin
Power Supply Cable Length:	1.5m	1.5m	1.5m	1.2m	1.2m	1.2m
Size (W x D x H):	215 x 385 x 325mm	230 x 460 x 310mm	240 x 450 x 405mm	245 x 465 x 385mm	250 x 665 x 410mm	405 x 995 x 620mm
Fuel:	Propane	Propane	Propane	Propane	Propane	Propane
Heated Area:	6850ft ³	9,500ft ³	12,360ft ³	15,900ft ³	23,000ft ³	72,000ft ³
Heated Area:	194m ³	275m ³	350m ³	450m ³	650m ³	2,038m ³
Weight:	5.25kg	6kg	6.18kg	5.90kg	8.1kg	24.6kg



Mini Design

A-D SEE BELOW
Oil-Filled Radiators

Oil-filled radiators suitable for office, home, showroom and workshop use. Manufactured to rigorous standards and fitted with a 3-pin plug and safety tip-over switch. Features full thermostatic heat control that cuts power to the heater elements when preset temperature is attained. Elements designed to maximize area of the heated surface in order to transfer more heat to the atmosphere. Model No. RD2500T fitted with 24 hour timer. Model No. RD800 fitted with hard-wearing feet to allow for maximum stability, the rest of the range are fitted with castors for added mobility.

	A	B	C	D
Model No:	RD800	RD1500	RD2500	RD2500T
Power:	800W	1500W	2500W	2500W
Supply/Plug Type:	230V/3-Pin	230V/3-Pin	230V/3-Pin	230V/3-Pin
Power Supply Cable Length:	1.2m	1.5m	1.5m	1.5m
Timer:	✗	✗	✗	✓
Size (W x D x H):	280 x 100 x 390mm	340 x 240 x 614mm	480 x 240 x 624mm	480 x 240 x 624mm
Weight:	3.1kg	7.8kg	11.4kg	11.5kg



E-G SEE BELOW

2000W Convector Heaters with Thermostat

Electric convector heaters with three settings of 750/1250/2000W for gradual control of heating elements. Rotary controlled room thermostat maintains ambient temperature at preset level. Model No's CD2005T and CD2005TT feature built-in turbo fan for accelerated heating. Model No. CD2005TT also features a 24 hour timer allowing the user to programme the time and duration the heater is operated. Slimline sturdy construction and high quality finish make these units suitable for home, light industrial and office environments. Supplied with 3-pin plug.

	E	F	G
Model No:	CD2005	CD2005T	CD2005TT
Power:	750/1250/2000W	750/1250/2000W	750/1250/2000W
Supply/Plug Type:	230V/3-Pin	230V/3-Pin	230V/3-Pin
Power Supply Cable Length:	1.5m	1.5m	1.5m
Turbo Fan:	✗	✓	✓
Timer:	✗	✗	✓
Size (W x D x H):	595 x 200 x 420mm	595 x 200 x 420mm	595 x 200 x 420mm
Weight:	2.5kg	2.8kg	2.9kg



A-B SEE BELOW

2000W Convector Heaters with Thermostat

Modern design convector heaters with three heat settings of 750/1250/2000W for gradual control of heating elements. Rotary controlled room thermostat maintains ambient temperature at preset level, with the addition of a thermal cut-off and overheat protection. Features hard-wearing feet to allow for maximum stability. Slimline, sturdy construction and high quality finish make these units suitable for home, light industrial and office environments. Supplied with 3-pin plug and 1.5m cable.

	A	B
Model No:	CD2013	CD2013TT
Power:	750/1250/2000W	750/1250/2000W
Supply/Plug Type:	230V/3-Pin	230V/3-Pin
Turbo Fan:	✗	✓
Timer:	✗	✓
Size (W x D x H):	620 x 224 x 380mm	600 x 100 x 350mm
Weight:	2.85kg	3.88kg



C FH2010

2000W Fan Heater - 2 Heat Settings & Thermostat

Tough composite case with integral carry handle. Can be seated in a vertical or horizontal position. 2-Position heat settings control two 1000W heating elements. Full range ambient room thermostat maintains temperature at preset level. Fan doubles as cool air blower for use in the summer. Supplied with 3-Pin plug and 1.4m cable.

Power:	1000/2000W
Supply/Plug Type:	230V/3-Pin
Size (W x D x H):	230 x 240 x 120mm
Weight:	1.2kg



D CH2013

1400W Ceramic Fan Heater - 2 Heat Settings

Stylish modern design heater with two heat settings of 700/1400W. Features PTC heat conducting ceramic elements to achieve an instant, odour-free heat. Thermostat control to maintain ambient temperature at preset level. Includes overheating protection and tilt safety switch. Protecting the user, product and environment.

Power:	700/1400W
Supply/Plug Type:	230V/3-Pin
Size (W x D x H):	210 x 115 x 250mm
Weight:	1.2kg



E-F SEE BELOW

Industrial Fan Heaters

Portable industrial heaters with two heat settings and one setting for air movement only. Tough composite case with integral carry handle. Full range ambient room thermostat maintains temperature. Fan doubles as cool air blower for use in the summer. Model No. FH3000 is supplied without plug.

	E	F
Model No:	FH2400	FH3000
Power:	0-2400W	0-3000W
Size (W x D x H):	300 x 267 x 332mm	300 x 267 x 332mm
Supply/Plug Type:	230V/3-Pin	230V/Bare Wire
Power Supply Cable Length:	1.3m	1.3m
Weight:	2.8kg	2.8kg



G-H SEE BELOW

Industrial Ceramic Fan Heaters

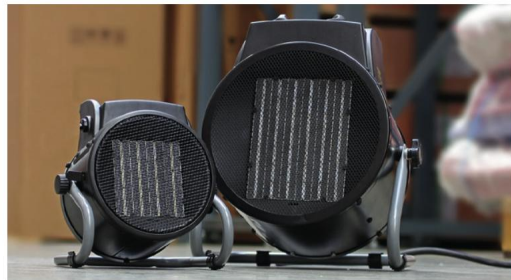
Portable industrial heaters with two heat settings and one setting for air movement only. Features PTC heat conducting ceramic elements to achieve an instant, odour-free heat. Thermostat control to maintain ambient temperature. Includes overheating protection, protecting the user, product and environment.

	G	H
Model No:	CH20	CH28
Power:	0-2000W	0-2800W
Size (W x D x H):	210 x 130 x 260mm	234 x 130 x 284mm
Supply/Plug Type:	230V/3-Pin	230V/3-Pin
Power Supply Cable Length:	1.2m	1.2m
Weight:	1.4kg	1.5kg

A-D SEE BELOW

Industrial PTC Fan Heaters

Industrial fan heaters with PTC heat conducting ceramic elements to achieve an instant, totally dry heat with no condensation, no gas, no fumes and no smell. Ambient room thermostat maintains temperature at a preset level. Ideal for industrial applications with two heat settings or fan only.



P.T.C Positive Temperature Coefficient



P.T.C Positive Temperature Coefficient

3 PHASE



	A	B	C	D
Model No:	PEH2001	PEH3001	PEH5001	PEH9001
Power:	1000/2000W	1500/3000W	3300/5000W	6000/9000W
Heated Area:	40m ³	60m ³	100m ³	180m ³
Supply/Plug Type:	230V/3-Pin	230V/Bare Wire	415V/3ph/Red - 16A-4P+E	415V/3ph/Red - 16A-4P+E
Power Supply Cable Length:	1.3m	1.3m	1.3m	1.3m
Size (W x D x H):	210 x 160 x 217mm	265 x 209 x 293mm	300 x 235 x 343mm	400 x 310 x 460mm
Weight:	1.75kg	2.9kg	4.2kg	6.3kg



3 PHASE



E-H SEE BELOW

Industrial Fan Heaters

Electric fan heaters with ducting for industrial applications. Model No. DEH2001 features one heat setting, Model No's DEH3001, DEH5001 and DEH10001 feature two heat settings. All units have thermostat control and fan only options. A totally dry heat with no condensation, no gas, no fumes and no smell. Ideal for workshops and garages. Model No. DEH2001 is supplied with 6m ducting hose, power cable and 3-pin plug. Model No DEH3001 is supplied with 6m ducting hose and power cable. DEH5001 is supplied with 6m ducting hose, 3ph power cable and 16A plug. DEH10001 is supplied with 6m ducting hose, 3ph power cable and 32A plug.

	E	F	G	H
Model No:	DEH2001	DEH3001	DEH5001	DEH10001
Power:	2000W	1500/3000W	2500/5000W	5000/10000W
Supply/Plug Type:	230V/3-Pin	230V/Bare Wire	415V/3ph/Red - 16A-4P+E	415V/3ph/Red - 32A-4P+E
Power Supply Cable Length:	1.2m	1.2m	1.2m	1.2m
Size (W x D x H):	310 x 210 x 340mm	310 x 210 x 340mm	400 x 240 x 360mm	440 x 300 x 430mm
Weight:	6.26kg	6.57kg	8.62kg	13.02kg

All models supplied with ducting.

A-B SEE BELOW
Industrial Fan Heaters

Electric fan heaters for industrial applications. Model No. EH2001 features one heat setting, Model No. EH3001 features two heat settings. Both units have thermostat control and fan only options. A totally dry heat with no condensation, no gas, no fumes and no smell. Ideal for workshops and garages. Model No. EH2001 supplied with power cable and 3-pin plug. Model No. EH3001 supplied with power cable.



C-F SEE BELOW
Industrial Fan Heaters 3ph

Electric fan heaters for industrial applications. Model No's EH5001, EH9001 and EH30001 feature two heat settings and fan only option. Model No. EH15001 features three heat settings and adjustable thermostat control with fan only option. Auto cooling system to prevent unit from overheating during use. A totally dry heat with no condensation, no gas, no fumes and no smell. Ideal for workshops and garages. Model No's EH5001 and EH9001 supplied with 3-phase power cable and 16A plug. Model No's EH15001 and EH30001 supplied with 3-phase chassis mounted 5-pin connector (extension cable required).



EH5001, EH9001 and EH30001 feature two heat settings, EH15001 features three. All units have a variable thermostat control and fan only option.

IMPORTANT NOTE
 Model No's EH5001, EH9001, EH15001 and EH30001 require a 3-phase supply. Please ensure installation is carried out by a competent electrician.



	A	B	C	D	E	F
Model No:	EH2001	EH3001	EH5001	EH9001	EH15001	EH30001
Power:	2000W	1500/3000W	2500/5000W	4500/9000W	5000/10000/15000W	15000/30000W
Heated Area:	40m ³	60m ³	100m ³	180m ³	300m ³	600m ³
Supply/Plug Type:	230V/3-Pin	230V/Bare Wire	415V/3ph/ Red - 16A-4P+E	415V/3ph/ Red - 16A-4P+E	415V/3ph/ Red - 32A-4P+E	415V/3ph/ Red - 63A-4P+E
Power Supply Cable Length:	1.2m	1.2m	1.2m	1.2m	n/a	n/a
Size (W x D x H):	215 x 230 x 280mm	315 x 330 x 400mm	315 x 330 x 400mm	350 x 405 x 460mm	495 x 520 x 860mm	645 x 565 x 860mm



A-B SEE BELOW
2800W Ceramic Heaters

Powder coated metal construction with two ceramic heating elements providing instant heat when required. Adjustable thermostat control (15°C–45°C). Soft-touch control panel with LED display. Programmable 7-day timer function. Equipped with a tilt cutout switch for added safety. Ideal for workshops and garages. Features chemically polished reflectors which provide maximum heat emission. Model No. CH30 fitted with sturdy frame and carry handle, Model No. CH30S supplied with adjustable height tripod. Both supplied with cable and 3-pin plug.



	A	B
Model No:	CH30S	CH30
Power:	1400/2800W	1400/2800W
Supply/Plug Type:	230V/3-Pin	230V/3-Pin
Power Supply Cable Length:	1.5m	1.5m
Dimensions (W x D x H):	Heater; 395 x 190 x 422mm	395 x 387 x 668mm
Maximum Height:	1760mm	n/a
Minimum Height:	1500mm	n/a
Weight:	11.2kg	7.8kg



Model No. CH30S, CH30, CH30110VS and CH30110V Display Panel.

	C	D
Model No:	CH30110VS	CH30110V
Power:	1200/2400W	1200/2400W
Supply/Plug Type:	110V/Yellow - 32A-2P+E	110V/Yellow - 32A-2P+E
Power Supply Cable Length:	1.5m	1.5m
Dimensions (W x D x H):	Heater; 395 x 190 x 422mm	395 x 387 x 668mm
Maximum Height:	1760mm	n/a
Minimum Height:	1500mm	n/a
Weight:	11.5kg	8.1kg



C-D SEE LEFT
2400W Ceramic Heaters 110V

Powder coated metal construction with two ceramic heating elements providing instant heat when required. Adjustable thermostat control (15°C–45°C). Soft-touch control panel with LED display. Programmable 7-day timer function. Equipped with a tilt cutout switch for added safety. Ideal for workshops and garages. Features chemically polished reflectors which provide maximum heat emission. Model No. CH30110V fitted with sturdy frame and carry handle, Model No. CH30110VS supplied with adjustable height tripod. Both supplied with 1.5m cable fitted with 32A/110V plug.

A NEW

2800W

B NEW

2400W

230V

32A 110V



A-B SEE BELOW

Infrared Halogen Heaters

Powder coated metal construction with tilting head giving directional heat control. Adjustable thermostat control (15°C–45°C). Soft-touch control panel with LED display. Programmable 7-day timer function. Equipped with a tilt cutout switch for added safety. Fitted with two ruby halogen infrared elements and chemically polished reflectors for maximum heat emission. Stand features easy-rolling castors with a locking castor fitted to the rear. Supplied with cable. Model No. IR15110V supplied with cable and 32A/110V plug.

	A	B
Model No:	IR15	IR15110V
Power:	1400/2800W	1200/2400W
Supply/Plug Type:	230V/Bare Wire	110V/Yellow - 32A-2P+E
Power Supply Cable Length:	1.8m	1.8m
Dimensions (W x D x H):	Heater; 597 x 488 x 792mm	Heater; 597 x 488 x 792mm
Weight:	13.8kg	14.1kg



C NEW

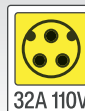
2800W

D NEW

2400W

230V

32A 110V



C-D SEE BELOW

Infrared Halogen Heaters

Powder coated metal cabinets with two ruby halogen infrared elements and chemically polished reflectors for maximum heat emission. Adjustable thermostat control (15°C–45°C). Soft-touch control panel with LED display. Programmable 7-day timer function. Equipped with a tilt cutout switch for added safety. Features easy-rolling castors (two locking). Supplied with cable. Model No. IR14110V supplied with cable and 32A/110V plug.

	C	D
Model No:	IR14	IR14110V
Power:	1400/2800W	1200/2400W
Supply/Plug Type:	230V/Bare Wire	110V/ Yellow - 32A-2P+E
Power Supply Cable Length:	1.8m	1.8m
Dimensions (W x D x H):	575 x 505 x 868mm	575 x 505 x 868mm
Weight:	15.9kg	16.2kg



Model No's IR15, IR15110V, IR14 and IR14110V Display Panel.

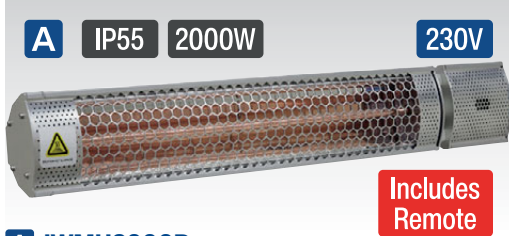
110V

230V



110V & 230V CABLE REELS

For more information, see pages 1178 to 1180.



A IWMH2000R
2000W High Efficiency Infrared Short Wave Wall Mounting Heater

A totally dry heat, no condensation, no gas, no fumes and no smell. Single infrared bulb allows heater's maximum temperature to be reached quickly with a HeLeN coating to reduce glare. Highly polished aluminium reflector for maximum heat efficiency. Controlled by push-on/off switch or via remote control (batteries not included). Ideal for industrial or domestic applications. Outdoor use only (IP55). Mounting brackets and fixings included.

Power:	1000/2000W
Supply/Plug Type:	230V/3-Pin
Power Supply Cable Length:	1.8m
Dimensions (W x D x H):	625 x 72 x 105mm



B IWMH2003
2000W Wall Mounting Infrared Quartz Heater

A totally dry heat, no condensation, no gas, no fumes and no smell. Reaches maximum heat output within seconds of being turned on. Highly polished aluminium reflector for maximum heat efficiency. Adjusts horizontally through 25° while mounted. Three settings, controlled by pull cord, allow unit to be on full, half or low power. Ideal for industrial or domestic applications. Suitable for outdoor use only (IP24 Rated).

Power:	2000W
Supply/Plug Type:	230V/3-Pin
Power Supply Cable Length:	1.8m
Dimensions (W x D x H):	485 x 170 x 250mm



C IWMH1809R
1800W High Efficiency Carbon Fibre Infrared Wall Heater

A totally dry heat, no condensation, no gas, no fumes and no smell. Reaches maximum heat output within seconds of being turned on. Highly polished aluminium reflector for maximum heat efficiency. Adjusts horizontally through 25° while mounted. Controlled by push-on/off switch or remote control. Ideal for industrial or domestic applications. Suitable for outdoor use only (IP65 Rated). Optional floor stand available Model No. IHS1.

Power:	1800W
Supply/Plug Type:	230V/3-Pin
Power Supply Cable Length:	1.8m
Dimensions (W x D x H):	650 x 200 x 240mm

Bulb	Type	Heat Efficiency	Overview
	Quartz	80%	Heats up in 30 seconds, producing a yellow glow. Economical to replace. Heating range of 3-4m.
	Ruby Halogen	85%	Instant heat, reaches full temperature in seconds. Produces a red glow. Heating range of 4-5m.
	Carbon Fibre	90%	Efficient heating element. Produces a soft glow, more comfortable to the eye. Heating range of 4-5m.



D IFSH1809R
1800W High Efficiency Carbon Fibre Infrared Patio Heater with Telescopic Floor Stand

A totally dry heat, no condensation, no gas, no fumes and no smell. Reaches maximum heat output within seconds of being turned on. Highly polished aluminium reflector for maximum heat efficiency. Adjusts horizontally through 25° while mounted. Controlled by push on/off switch or remote control. Ideal for industrial or domestic applications. Suitable for outdoor use only (IP65 Rated). Supplied with floor stand.

Power:	1800W
Supply/Plug Type:	230V/3-Pin
Power Supply Cable Length:	1.8m
Heater Dimensions (W x D x H):	650 x 200 x 240mm
Min./Max. Height:	1530/1850mm

Why Choose Carbon Fibre Elements?

- Carbon fibre heating elements are the safest form of infrared.
- Extremely high efficiency converts most of the electric into far infrared heat.
- Yellow and soft visible light comfortable to your eyes.



E IHS1
Stand to Convert IWMH1809R to IFSH1809R

Min./Max. Height:	1340/1700mm
-------------------	-------------



F IFSH2003
2000W High Efficiency Infrared Quartz Patio Heater with Telescopic Floor Stand

A totally dry heat, no condensation, no gas, no fumes and no smell. Reaches maximum heat output within seconds of being turned on. Highly polished aluminium reflector for maximum heat efficiency. Adjusts horizontally through 25° while mounted. Three settings, controlled by pull cord, allowing unit to be on full, half or low power. A tip-over switch is incorporated to cut power should unit be accidentally knocked over. Ideal for industrial or domestic applications. Suitable for outdoor use only (IP24 rated).

Power:	2000W
Supply/Plug Type:	230V/3-Pin
Power Supply Cable Length:	1.8m
Heater Dimensions (W x D x H):	485 x 170 x 250mm
Minimum/Maximum Height:	1530/1850mm

A NEW

1200W
230V



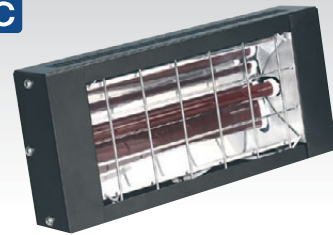
B NEW

2800W
230V



C

1500W
230V



C IWMH1500
1500W Infrared Quartz Heater
Wall Mounting 230V

Electric heater with infrared quartz lamp. Suitable for wall or overhead mounting. Reaches maximum heat output within seconds of being turned on. Supplied with 1m power cable and mounting bracket. A totally dry heat with no condensation, no gas, no fumes and no smell. For outdoor use only.

Power:	1500W
Supply/Plug Type:	230V/Bare Wire
Power Supply Cable Length:	1m
Heater Dimensions (W x D x H):	405 x 75 x 185mm
Mounting Bracket Stand-Off:	265mm
Minimum Mounting Height:	2.2m

A-B SEE RIGHT
Infrared Quartz Heaters
Wall Mounting 230V

Electric heaters with infrared quartz lamps. Suitable for wall or overhead mounting. Reaches maximum heat output within seconds of being turned on. Supplied with power cable and mounting brackets. Produces a totally dry heat with no condensation, no gas, no fumes and no smell.

	A	B
Model No:	IR12	IR28
Power:	1200W	1400/2800W
Supply/Plug Type:	230V/3-Pin	230V/3-Pin
Power Supply Cable Length:	1.3m	1.8m
Dimensions (W x D x H):	412 x 95 x 210mm	412 x 95 x 420mm
Mounting Bracket Stand-Off:	134mm	134mm
Weight:	2.7kg	4.9kg

D

NEW
1200W
230V



E

NEW
2800W
230V



F

NEW



G

1500W
230V



D-E SEE BELOW
Infrared Quartz Heaters with Tripod Stand 230V

Electric heaters with infrared quartz lamps. Multiple uses including wall or overhead mounting and freestanding when using the tripod. Reaches maximum heat output within seconds of being turned on. Supplied with power cable, mounting brackets and tripod stand (IRCT). Produces a totally dry heat with no condensation, no gas, no fumes and no smell.

	D	E
Model No:	IR12CT	IR28CT
Power:	1200W	1400/2800W
Supply/Plug Type:	230V/3-Pin	230V/3-Pin
Power Supply Cable Length:	1.3m	1.8m
Dimensions (W x D x H):	1100 x 1100 x 1490mm	1100 x 1100 x 1640mm
Mounting Bracket Stand-Off:	134mm	134mm
Weight:	6.2kg	8.2kg

F IRCT
Tripod Stand for IR Heaters

Tripod stand for Sealey IR12 and IR28 heaters. Durable powder coated construction. Easily fold down and secure using locking pin for compact storage. Adjustable bracket allows heater to be angled to face up or down.

Min./Max. Height:	1340/1420mm
Weight:	3.3kg

G LP1500
1500W Infrared Quartz Heater
with Telescopic Tripod Stand

Electric, tripod mounted, heater with infrared quartz lamp. Reaches maximum heat output within seconds of being turned on. Supplied with 3m power cable and 3-pin plug. A totally dry heat with no condensation, no gas, no fumes and no smell. Ideal for workshops, bars, forecourts or gardens and terraces, if weather protected.

Power:	1500W
Supply/Plug Type:	230V/3-Pin
Power Supply Cable Length:	3m
Min./Max. Height:	600/ 1600mm
Weight:	4.7kg



A SAC04
Air Cooler/Purifier/Humidifier

Multifunction 3-in-1 unit comprising air cooler, air purifier and humidifier with active carbon filter. Features 3-speed fan and adjustable airflow direction. 4L Water tank supplied with two ice packs enables refrigerant-free cooling by evaporating water. Mounted on castors for manoeuvrability.

Supply/Plug Type:	230V/3-Pin
Power Supply Cable Length:	1.8m
Maximum Airflow:	7.5m/s
Cooler:	65W
Cooling Water Tank:	4L
Weight:	4.6kg



B SAC13
Air Cooler/Purifier/Humidifier with Remote Control

Multifunction 3-in-1 unit comprising air cooler, air purifier and humidifier with active carbon filter. Features 3-speed fan, adjustable timer ranging from 30 minutes - 7.5 hours and adjustable airflow direction. Large 13L water tank supplied with two ice packs enables refrigerant-free cooling by evaporating water. Supplied with electronic remote control for Easy operation. Mounted on castors for manoeuvrability.

Supply/Plug Type:	230V/3-Pin
Power Supply Cable Length:	1.8m
Maximum Airflow:	10m/s
Cooler:	65W
Cooling Water Tank:	13L
Weight:	5.7kg



C SAC41
Air Cooler/Heater/Air Purifier/Humidifier with Remote Control

4-in-1 Air cooler, heater, air purifier and humidifier. Remote control and panel control. Large 12L water tank supplied with ice pack. Generates negative ions to purify and sterilise output air. Hi-tech PTC heating element assures safer and rapid heating with two power options (1000/2000W). Adjustable airflow direction. Three selectable fan speeds. Up to 12 hour timer. Easy to operate and move around on castors.

Cooler:	80W
Heater:	1000/2000W
Supply/Plug Type:	230V/3-Pin
Power Supply Cable Length:	1.4m
Maximum Airflow:	485m ³ /hr
Cooling Water Tank:	12L
Weight:	7.9kg



D VEN200
Ø200mm Portable Ventilator with 5m Ducting

Ideal for use where high volume air delivery is required. Especially suitable for ventilating confined, hot or fume laden work sites, typically as found in boats, cable/pipe ducts, roof spaces etc. Lightweight and robust construction give the portability and durability necessary in the workplace. Fitted with carry handle. Supplied with 5m ducting, optional 10m length available.

Power:	116.83W
Supply/Plug Type:	230V/3-Pin
Power Supply Cable Length:	1.8m
Fan Diameter:	Ø200mm
Fan Speed:	2800rpm
Maximum Airflow:	1233m ³ /hr(725cfm), 20.55m ³ /min
Static Pressure:	3.1mbar
Weight:	6.7kg
Replacement Ducting (5m):	VEN200AK1
Optional Ducting (10m):	VEN200AK2



A SAC7000
7,000Btu/hr Portable Air Conditioner/Dehumidifier/Air Cooler
 3-in-1 High capacity, compact, portable air conditioner, air cooling with ventilation and dehumidifying functions. Thermostatically controlled with built-in 24hr timer and sleep mode. Soft-touch control panel with LED digital display and remote control. Self-evaporating system reuses the moisture it collects from the air to help with the cooling process allows better efficiency, low maintenance and powerful cooling. Water-full indicator with auto-shut-off. Supplied with extendable exhaust ducting with window kit for ventilation and continuous drain hose. Eco-Friendly R290 refrigerant. Air conditioning temperature range 16-32°C. Washable filter. Auto-defrost function at low ambient temperature. Mounted on castor wheels for manoeuvrability.

Power:	780W
Supply/Plug Type:	230V/3-Pin
Power Supply Cable Length:	1.8m
Cooling Capacity:	7000Btu/hr
Maximum Airflow:	290m ³ /hr
Refrigerant:	R290
Discharge Side Pressure:	3.2MPa
Maximum Water Extraction Rate:	14.6L/day
Suction Side Pressure:	0.7MPa
Maximum Exhaust Hose Length:	1.5m
Energy Rating:	A (EER: 2.6)
IP Rating:	IPX1
Mass of Refrigerant	120g
Noise Level:	54dB(A)
Rated Capacity:	2050W
Weight:	20kg

D SACWK1
Window Sealing Kit for Air Conditioner Ducting
 Suitable for all types of window including sash and skylights up to 400cm total perimeter. Easy to install using the supplied roll of self-adhesive hook-and-loop tape. Double zip makes positioning the ducting at any height easy. Saves energy by making the air conditioner or dryer more effective.



B SAC9002
9,000Btu/hr Portable Air Conditioner/Dehumidifier/Air Cooler
 3-in-1 High capacity, compact, portable air conditioner, air cooling with ventilation and dehumidifying functions. Thermostatically controlled with built-in 24hr timer and sleep mode. Soft-touch control panel with LED digital display and remote control. Self-evaporating system reuses the moisture it collects from the air to help with the cooling process allows better efficiency, low maintenance and powerful cooling. Water-full indicator with auto-shut-off. Supplied with extendable exhaust ducting with window kit for ventilation and continuous drain hose. Eco-Friendly R290 refrigerant. Air conditioning temperature range 16-32°C. Washable filter. Auto-defrost function at low ambient temperature. Mounted on castor wheels for manoeuvrability.

Power:	1005W
Supply/Plug Type:	230V/3-Pin
Power Supply Cable Length:	1.8m
Cooling Capacity:	9000Btu/hr
Maximum Airflow:	330m ³ /hr
Refrigerant:	R290
Discharge Side Pressure:	3.2MPa
Maximum Water Extraction Rate:	25L/day
Suction Side Pressure:	0.7MPa
Maximum Exhaust Hose Length:	1.5m
Energy Rating:	A (EER: 2.6)
IP Rating:	IPX1
Mass of Refrigerant:	170g
Noise Level:	65db(A)
Rated Capacity:	2600W
Weight:	22.5kg



C SAC12000
12,000Btu/hr Portable Air Conditioner/Dehumidifier/Air Cooler/Heater
 4-in-1 High capacity, compact, portable air conditioner, air cooling with ventilation, dehumidifying and heating functions. Thermostatically controlled with built in 24hr timer and sleep mode. Soft-touch control panel with LED digital display and remote control. Self-evaporating system reuses the moisture it collects from the air to help with the cooling process allows better efficiency, low maintenance and powerful cooling. Water-full indicator with auto-shut-off. Supplied with extendable exhaust ducting with window kit for ventilation and continuous drain hose. Eco-Friendly R290 refrigerant. Air conditioning temperature range 16-32°C. Washable filter. Auto-defrost function at low ambient temperature. Mounted on castor wheels for manoeuvrability.

Power:	1337W (Cooling), 1118W (Heating)
Supply/Plug Type:	230V/3-Pin
Power Supply Cable Length:	1.8m
Cooling Capacity:	12000Btu/hr
Maximum Airflow:	410m ³ /hr
Refrigerant:	R290
Discharge Side Pressure:	3.2MPa
Maximum Water Extraction Rate:	30.3L/day
Suction Side Pressure:	0.7MPa
Maximum Exhaust Hose Length:	1.5m
Energy Rating:	A (EER: 2.6)
Weight:	29.5kg

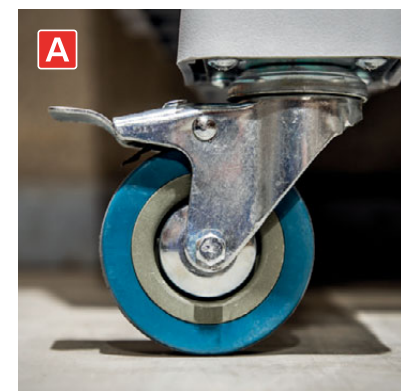


A SAC125

Commercial Portable Air Cooler

Portable, robust commercial air cooling unit. The cooler uses water evaporation technology with air movement to provide more economical cooling without refrigerants. Three easy touch wind speeds for desired airflow. Fully closable louvres and auto vertical louvre with long distance air throw. Large 125L water tank with inlet float valve and shortage alarm. Easy clean with removable high quality dust filters and honeycomb cooling pads on all three sides. Castor wheels make it easily transportable to any indoor application.

Maximum Airflow:	9000m ³ /hr
Supply/Plug Type:	230V/3-Pin
Power Supply Cable Length:	2.1m
Weight:	23.5kg



B 10L



B SDH102

10L Dehumidifier

Compact, efficient, low noise portable unit that extracts up to 10L of water per day. Removes excess moisture from air to prevent build-up of mildew and mould. Features adjustable 24hr timer, water-full indicator and auto-defrosting. Digital control panel, LED display and 3-colour indicator to show different RH% levels. Refrigerant is environmentally friendly R290. Supplied with drain hose for continuous operation.

Power:	195W
Supply/Plug Type:	230V/3-Pin
Power Supply Cable Length:	2m
Dehumidifying Capacity:	10L/day
Working Space:	15m ³
Maximum Airflow:	120m ³ /hr
Refrigerant:	R290
Condensate Tank:	2L (with Auto-Shut-Off)
Working Temperature:	5-35°C
Weight:	10kg

C SDH20

20L Dehumidifier

Compact, efficient and portable unit that extracts up to 20L of water per day. Removes excess moisture from air to prevent build-up of mildew and mould. Indicator light on front panel changes colour to show current humidity level in room. Touchscreen control panel allows the user to select the mode, set the desired humidity level and a timer ranging from 1 to 24 hours. Automatically turns off when tank is full, for safety. Refrigerant is environmentally friendly R290. Supplied with a 300mm drain hose for continuous operation along with four swivel wheels allowing the unit to be easily manoeuvred.

Power:	Max./Rated - 420/320W
Supply/Plug Type:	230V/3-Pin
Power Supply Cable Length:	1.8m
Dehumidifying Capacity:	20L/day (30°C RH 80%)
Working Space:	30m ²
Maximum Airflow:	195m ³ /hr
Refrigerant:	R290
Condensate Tank:	6.5L (with Auto-Shut-Off)
Working Temperature:	5-32°C
Weight:	14.5kg



C 20L



A
30L
230V



B
50L
230V



C NEW
50L
16A 110V



D
70L
230V



E NEW
90L
230V



A-E SEE BELOW
Industrial Dehumidifiers

Powerful dehumidification capacity. Removes excess moisture from air, preventing build-up of mildew and mould. Features auto-defrost function, which activates if the room temperature falls too low. The units are all equipped with a 24hr timer function for delay starting and auto-shut-off. Washable air filter. Refrigerant is environmentally friendly R290. May be connected to a drain hose for continuous operation. Mounted on castors for manoeuvrability.

	A	B	C	D	E
Model No:	SDH30	SDH50	SDH50110V	SDH70	SDH90
Power:	420W (27°C RH60%), 500W(30°C RH80%)	750W(27°C RH60%), 950W(30°C RH80%)	600W(27°C RH60%), 800W(30°C RH80%)	950W (27°C RH60%), 1300W(30°C RH80%)	1000W (27°C RH60%), 1350W(30°C RH80%)
Supply/Plug Type:	230V/3-Pin	230V/3-Pin	110V/Yellow - 16A-2P+E	230V/3-Pin	230V/3-Pin
Power Supply Cable Length:	1.5m	1.5m	1.5m	1.5m	1.5m
Dehumidifying Capacity:	30L/day(30°C RH80%)	50L/day(30°C RH80%)	50L/day(30°C RH80%)	70L/day(30°C RH80%)	90L/day(30°C RH80%)
Working Space:	50-120m ³	50-120m ³	50-120m ³	80-160m ³	90-200m ³
Maximum Airflow:	300m ³ /hr	350m ³ /hr	300m ³ /hr	400m ³ /hr	500m ³ /hr
Refrigerant:	R290/0.12kg	R290/0.2kg	R290/0.2kg	R290/0.28kg	R290/0.30kg
Condensate Tank:	7L (with Auto-Shut-Off)	7L (with Auto-Shut-Off)	7L (with Auto-Shut-Off)	n/a	n/a
Working Temperature:	5-35°C	5-35°C	5-35°C	5-35°C	5-35°C
Weight:	26kg	32kg	30kg	40kg	45kg



A-B SEE BELOW

Air Dryer/Blowers

Robust, composite housing and carefully balanced and fully guarded blade drum provide quiet and safe operation. Housing design provides three outlet positions from horizontal to vertical, allowing precise direction of airflow for cooling or drying. Handle incorporates cable storage. Suitable for use in industrial, commercial, agricultural and automotive workshops.

	A	B
Model No:	ADB300	ADB3000
Speeds:	1275rpm	940/1210/1370rpm
Maximum Airflow:	10m ³ /min(356cfm)	81m ³ /min(2,860cfm)
Power:	96W	1130W
Supply/Plug Type:	230V/3-Pin	230V/3-Pin
Power Supply Cable Length:	5m	5m
Current:	0.5A	5A
Weight:	3.5kg	16.6kg



All ventilators are supplied with five metres of ducting.

C-E SEE BELOW

Portable Ventilators with Ducting

Ideal for use where high-volume clean air delivery is required. Especially designed to easily ventilate hot or fume laden work areas, creating a cleaner and more pleasant working environment. Supplied with 5m ducting (VEN200AK1). Optional 10m ducting (VEN200AK2) available, but not supplied. The air mover/ventilator can be used across multiple industries including, but not exclusive to; marine, roof spaces and building sites, cable/pipe ducts and workshops. Lightweight in construction with large carry handle makes it easily portable.



	C	D	E
Model No:	VEN200	VEN250	VEN300
Power:	116.83W	300W	500W
Supply/Plug Type:	230V/3-Pin	230V/3-Pin	230V/3-Pin
Power Supply Cable Length:	1.8m	1.8m	1.8m
Fan Diameter:	Ø200mm	Ø250mm	Ø300mm
Fan Speed:	2800rpm	2800rpm	2800rpm
Maximum Airflow:	1233m ³ /hr(725cfm), 20.55m ³ /min	2700m ³ /hr(1,589cfm), 45m ³ /min	3900m ³ /hr(2,295cfm), 65m ³ /min
Static Pressure:	3.1mbar	3.0mbar	3.9mbar
Weight:	6.7kg	14.9kg	19.9kg
Replacement Ducting (5m):	VEN200AK1	VEN250AK1	VEN300AK1
Optional Ducting (10m):	VEN200AK2	VEN250AK2	VEN300AK2



A-D SEE BELOW

Desk Fans

Manufactured from durable composite material, ergonomically designed to pivot on a 180° axis, maximising the volume and direction of airflow. All models except SFF04 can also be wall mounted. Fitted with 3-pin plug.

	A	B	C	D
Model No:	SFF04	SFF08	SFF12	SFF16
Fan Diameter:	Ø100mm(4")	Ø200mm(8")	Ø300mm(12")	Ø400mm(16")
Speeds:	1	3	3	3
Power:	14W	35W	45W	55W
Supply/Plug Type:	230V/3-Pin	230V/3-Pin	230V/3-Pin	230V/3-Pin
Power Supply Cable Length:	1.6m	1.6m	1.6m	1.6m
Height:	150mm	290mm	400mm	525mm



E SFF6USB

6" Oscillating USB Desk Fan

Manufactured from composite materials with a steel fan guard. Oscillation control switch and pivot head allow the user to control how the airflow is distributed. Brushless fan motor keeps the fan quiet, making it ideal for office environments. 3-Speed settings. Supplied with a USB cable for powering via a laptop or mobile power bank, alternatively can be powered by 3 x AA batteries (not included) making it perfect as a portable fan.

Fan Diameter:	Ø150mm(6")
Speeds:	3
Power:	2.5W
Supply/Plug Type:	5V/USB
Height:	205mm



F SCF8W

8" Clip-On Fan

Clip-on fan featuring tilt and swivel head for optimum air circulation. Switch control and fully guarded fan blades for ease of use and extra safety. Smooth running motor powers fan blades.

Fan Diameter:	Ø200mm(8")
Speeds:	2
Maximum Airflow:	15m ³ /min
Power:	20W
Supply/Plug Type:	230V/3-Pin
Power Supply Cable Length:	1.5m
Height:	360mm



G STF12C

12" Oscillating Desk Tower Fan

Slimline fan design ideal for desktop use. Matte finish with 2-speed and oscillating functions. Smooth running highly durable copper motor powers fan blades and oscillating motor to aid powerful and even air distribution. Fitted with 3-pin plug.

Speeds:	2
Oscillation:	✓
Power:	18W
Supply/Plug Type:	230V/3-Pin
Power Supply Cable Length:	1.5m
Height:	320mm



A-B SEE BELOW
Oscillating Tower Fans

Slimline fan design, suitable for floor or desktop. Built-in carry handle and up to 2 hour auto-shut-off timer. Smooth running motor powers fan blades and oscillating gearbox to aid powerful and even air distribution. Fitted with 3-pin plug.

	A	B
Model No:	STF30	STF42
Speeds:	3	3
Oscillation:	✓	✓
Remote Control:	✗	✓
Power:	40W	55W
Supply/Plug Type:	230V/3-Pin	230V/3-Pin
Power Supply Cable Length:	1.5m	1.5m
Height:	762mm(30")	1065mm(42")



D HVD16
16" High Velocity Drum Fan

High velocity 3-speed drum fan is a lightweight, portable and robust unit fitted with rubber feet for stability. Features a handle and 360° tilting stand allowing control of airflow to exactly where it is needed. Carefully balanced and fully guarded aluminium blades provide quiet and safe operation. Suitable for use in industrial, commercial, agricultural, automotive workshop, showroom and home applications. Fitted with 3-pin plug.

Speeds:	3
Speed Range:	800-1225rpm
Maximum Airflow:	64.9m ³ /min(2,292cfm)
Power:	124W
Supply/Plug Type:	230V/3-Pin
Power Supply Cable Length:	2m
Current:	0.5A



C NEW
STF43Q
43" Quiet High Performance Oscillating Tower Fan

High performance tower fan with advanced centrifugal blades for maximum air movement. Quiet operation and high durability motor. Five carefully programmed modes which include - Sleep/Calm/Refresh/Cool/Power. Offers quiet 70° oscillation allowing great airflow in any room. Additional features include an 8hr timer, Easy-touch, Auto-dimming LED control panel and fully functional remote control and remote storage. Built-in handle and ideal for home, bedroom and office environments. Easy-to-assemble, tool free.

Speeds:	5
Oscillation:	✓
Remote Control:	✓
Power:	55W
Supply/Plug Type:	230V/3-Pin
Power Supply Cable Length:	1.5m
Height:	1080mm(43")
Weight:	4.3kg



E-F NEW
SEE BELOW
230V/20V 16" 2-in-1 Cordless/Corded High Velocity Drum Fan

High velocity continuous variable speed drum fan which is mains or cordless power meaning increased versatility in positioning cooling where it is most required. Lightweight, portable and robust unit fitted with rubber feet for stability. Features a handle plus 360° tilting stand allowing control of airflow to exactly where it is needed. Carefully balanced and fully guarded aluminium blades provide quiet and safe operation and is suitable for use in industrial, commercial, agricultural, automotive workshop, showroom and home applications. See pages 844 to 872 for the rest of the SV20 range.

Speeds:	1
Speed Range:	580-1470rpm
Maximum Airflow:	46.7m ³ /min(1,650cfm)
Power:	24W
Supply/Plug Type:	230V/3-Pin or 20V Cordless
Power Supply Cable Length:	1.8m or Cordless
Current:	1.2A
Model No:	Contents:
E HVD16C	HVD16C - Body Only
F HVD16CCOMBO	HVD16C - Body, CP20VBP6 - 6Ah Battery CP20VMC - Single Battery Charger



A-B SEE BELOW Desk/Pedestal Fans

Versatile fans manufactured from durable composite material with three height stages and 3-speeds. Adding or removing threaded extension sections converts the fan between a stand, low stand and desk fan with no need for tools. Fan head pivots vertically through 180° to control the direction of airflow. Fitted with 3-pin plug.

	A	B
Model No:	SFF12DP	SFF16DP
Fan Diameter:	Ø300mm(12")	Ø400mm(16")
Speeds:	3	3
Speed Range:	1200-1350rpm	1120-1300rpm
Power:	36.3W	42.5W
Supply/Plug Type:	230V/3-Pin	230V/3-Pin
Power Supply Cable Length:	1.6m	1.6m
Heights:	530/740/1000mm	750/980/1275mm



C-D SEE BELOW

Wall Fans with Remote Control 230V

Features tilt and swivel head for optimum air circulation. Remote control operation and fully guarded fan blades for ease of use and extra safety. Smooth running motor powers both fan blades and head oscillation. Timer function allows user to preset running time between 30 minutes - 4 hours. Sleep mode for gradual reduction of fan speed. Supplied with wall bracket for quick and easy installation.

	C	D
Model No:	SWF16WR	SWF18WR
Fan Diameter:	Ø400mm(16")	Ø450mm(18")
Speeds:	3	3
Oscillation:	✓	✓
Maximum Airflow:	45m ³ /min	97m ³ /min
Power:	45W	65W
Supply/Plug Type:	230V/3-Pin	230V/3-Pin
Power Supply Cable Length:	1.5m	1.5m
Height:	500mm	550mm

E HVF18

18" Industrial High Velocity Floor Fan

High velocity fan suitable for movement of huge volumes of air. Carefully balanced and fully guarded blades provide quiet and safe operation. 3-Speed power selection and cradle stand allow precise control of airflow to exactly where it is needed. Fitted with 3-pin plug. Suitable for use in industrial, commercial, agricultural, automotive workshop and showroom applications.

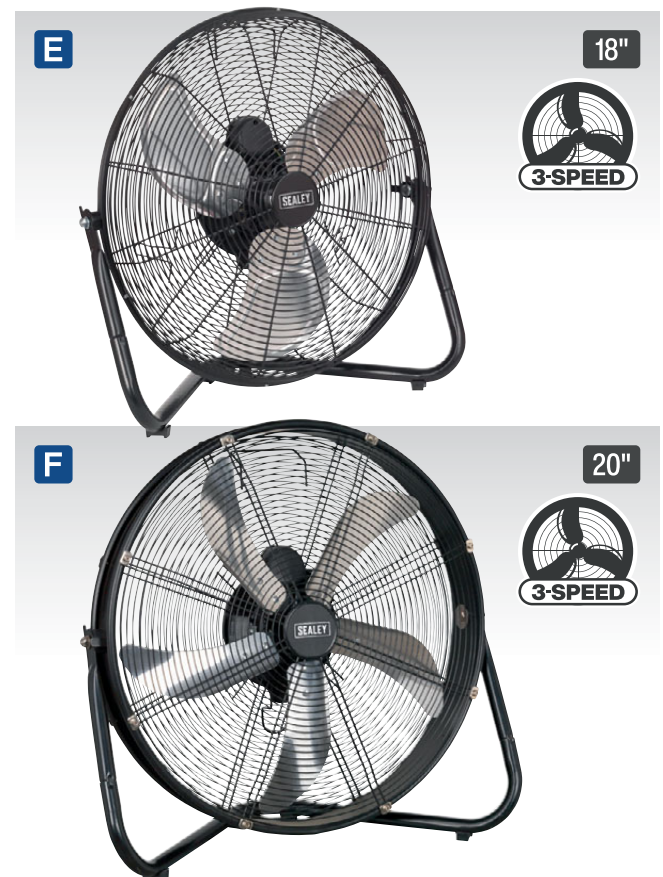
Fan Diameter:	Ø450mm(18")
Speeds:	3
Speed Range:	1020/1130/1300rpm
Maximum Airflow:	107m ³ /min(3,760cfm)
Power:	110W
Supply/Plug Type:	230V/3-Pin
Power Supply Cable Length:	1.5m
Current:	0.5A

F HVF20

20" Industrial High Velocity Floor Fan

High velocity fan suitable for movement of huge volumes of air. Features 3-speed settings for choice of airflow and tilting blade cradle. Fully guarded blades with large diameter base for safety and added stability. Mains cable storage keeps it tidy when not in use. Suitable for industrial, commercial, agricultural, workshop and showroom applications.

Fan Diameter:	Ø550mm(20")
Speeds:	3
Speed Range:	1100/1225/1350rpm
Maximum Airflow:	110m ³ /min(3,900cfm)
Power:	105-115W
Supply/Plug Type:	230V/3-Pin
Power Supply Cable Length:	1.5m
Current:	0.5A



A SFF16Q
16" Quiet High Performance Oscillating Pedestal Fan

High performance pedestal fan with advanced aerodynamic blades for maximum air movement. Quiet operation and high durability motor. 5-Carefully programmed modes which include - Sleep/Calm/Refresh/Cool/Power. Offers quiet oscillation and adjustable fan head allowing great airflow in any room. Additional features include an 8hr timer, auto-dimming LED control panel and fully functional remote control and remote storage. Metal grill and height adjustment up to 1.4m(55"). Ideal for home, bedroom and office environments. Weighted base for extra stability, tool-free and easy-to-assemble.

Fan Diameter:	Ø400mm(16")
Speeds:	5
Speed Range:	600/700/800/900/1000rpm
Maximum Airflow:	57m ³ /min(2,027cfm)
Height:	1150-1400mm
Power:	50W
Supply/Plug Type:	230V/3-Pin
Power Supply Cable Length:	1.5m
Current:	0.5A



B-C SEE BELOW

20" Industrial High Velocity Pedestal Fans

High velocity fans suitable for movement of huge volumes of air. Both feature 3-speed settings for choice of airflow, tilting blade cradle and height-adjustable stand. Model No. HVF20PO features oscillation. Fully guarded blades with large diameter base for safety and added stability. Suitable for industrial, commercial, agricultural, workshop and showroom applications.

	B	C
Model No:	HVF20P	HVF20PO
Fan Diameter:	Ø550mm(20")	Ø550mm(20")
Speeds:	3	3
Speed Range:	1100/1250/1350rpm	1050/1150/1350rpm
Maximum Airflow:	138m ³ /min(4,875cfm)	110m ³ /min(3,900cfm)
Height:	1300-1410mm	1080-1410mm
Power:	111W	115W
Supply/Plug Type:	230V/3-Pin	230V/3-Pin
Power Supply Cable Length:	2m	2m
Current:	0.5A	0.5A



D HVSF30

30" Industrial High Velocity Oscillating Pedestal Fan

High velocity pedestal fan suitable for movement of huge volumes of air. Carefully balanced and fully guarded blades provide quiet and safe operation. 2-Speed power selection, spring-assisted, height-adjustable stand and switchable head oscillation allow precise control of airflow to exactly where it is needed. Fitted with 3-pin plug. Suitable for industrial, commercial, agricultural, automotive workshop and showroom applications.

Fan Diameter:	Ø760mm(30")
Speeds:	2
Speed Range:	800-900rpm
Maximum Airflow:	288m ³ /min
Height:	1610-2030mm
Power:	123W
Supply/Plug Type:	230V/3-Pin
Power Supply Cable Length:	2m
Current:	0.52A

A 20"



B 24"



C 30"



Models **A-C** feature 360° tilt and swivel function allowing air to be directed exactly where required.



A-C SEE BELOW

Industrial High Velocity Orbital Drum Fans

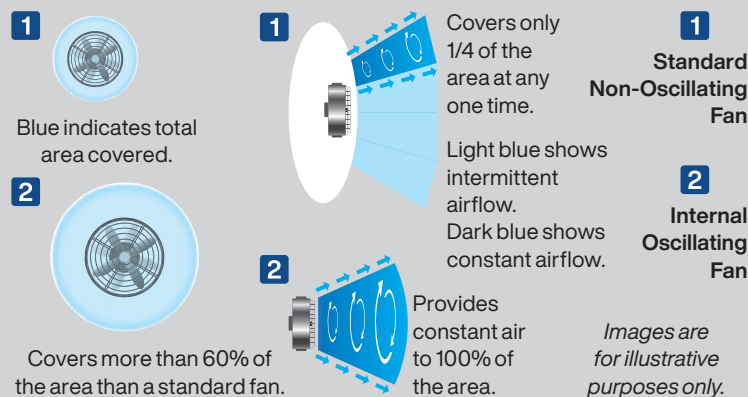
High velocity industrial drum fans suitable for movement of huge volumes of air. Robust units with heavy-duty gauge steel casing, guard and frame. Featuring a 360° tilt function allowing for the direction of airflow to be positioned anywhere on a 360° axis. Carefully balanced and fully guarded blades provide safe operation. Fitted with 3-pin plug. Suitable for industrial, commercial, agricultural, automotive workshop and showroom applications.

	A	B	C
Model No:	HVF20S	HVF24S	HVF30S
Fan Diameter:	Ø550mm(20")	Ø610mm(24")	Ø760mm(30")
Speeds:	3	2	2
Speed Range:	1100-1350rpm	1100-1350rpm	800-900rpm
Maximum Airflow:	123.5m ³ /min (4,361cfm)	155.3m ³ /min (5,484cfm)	283.4m ³ /min (10,008cfm)
Power:	108.6W	116.3W	118.6W
Supply/Plug Type:	230V/3-Pin	230V/3-Pin	230V/3-Pin
Power Supply Cable Length:	2m	2m	2m
Current:	0.5A	0.52A	0.52A

D 18"



BENEFITS OF THE HVF18IS



D HVF18IS

18" Industrial High Velocity Floor Fan with Internal Oscillation

High velocity fan suitable for movement of huge volumes of air. Features patented design whereby blades internally oscillate safely within the fan body, enabling the fan to cover more than twice the area of a non-oscillating model. Carefully balanced blades provide constant airflow to complete area, whereas a standard oscillating fan covers only 1/4 of the area at any one time. 3-Speed power selection with switchable oscillation control. Robust cradle stand enables secure positioning. Suitable for industrial, commercial, agricultural, automotive workshop and showroom applications.

Fan Diameter:	Ø450mm(18")
Maximum Airflow:	55m ³ /min(1,118cfm)
Speeds:	3
Power:	58W
Supply/Plug Type:	230V/3-Pin
Power Supply Cable Length:	2m
Current:	0.25A

A 24"



B 30"



A-B SEE BELOW

Industrial High Velocity Drum Fans

High velocity industrial drum fans suitable for movement of huge volumes of air. Robust units with heavy-duty gauge steel casing, guard and frame. Handle, wheels and tilt function cradle stand, allow the control of airflow where it is needed. Carefully balanced and fully guarded blades provide safe operation. Fitted with 3-pin plug. Suitable for use in industrial, commercial, agricultural, automotive and showroom applications.

	A	B
Model No:	HVD24	HVD30
Fan Diameter:	Ø610mm(24")	Ø760mm(30")
Speeds:	2	2
Speed Range:	1350-1450rpm	800-900rpm
Maximum Airflow:	155.3m ³ /min(5,484cfm)	283.4m ³ /min(10,008cfm)
Power:	116.32W	118.6W
Supply/Plug Type:	230V/3-Pin	230V/3-Pin
Power Supply Cable Length:	2m	2m
Current:	0.52A	0.52A



C 30"



C HVD30110V

30" Industrial High Velocity Drum Fan 110V

High velocity industrial drum fan suitable for movement of huge volumes of air. Robust unit with heavy-duty gauge steel casing, guard and frame. Handle, wheels and tilt function cradle stand, allow the control of airflow where it is needed. Carefully balanced and fully guarded blades provide safe operation. Fitted with 16A 110V plug. Suitable for industrial, commercial, agricultural, automotive and on site applications.

Fan Diameter:	Ø760mm(30")
Speeds:	2
Speed Range:	800-900rpm
Maximum Airflow:	284.8m ³ /min(10,057cfm)
Power:	115.8W
Supply/Plug Type:	110V/Yellow - 16A-2P+E
Power Supply Cable Length:	2m
Current:	1.1A



Premier

Why Choose A Premier Fan?

- Up to 30% more area coverage.
- More efficient blade and motor design.
- More robust with a deeper drum.



A-C SEE BELOW

Premier Industrial High Velocity Drum Fans - 230V

Premier range of high efficiency industrial fans with improved motor and blade design resulting in higher velocity with up to 30% more area coverage and reach. Robust units with heavy-duty gauge steel casing, guard and frame. Handle, wheels and tilt function cradle stand, allow the control of airflow where it is needed. Carefully balanced and fully guarded blades provide safe operation. Suitable for use in industrial, commercial, agricultural, automotive and showroom applications. Fitted with 3-pin plug.



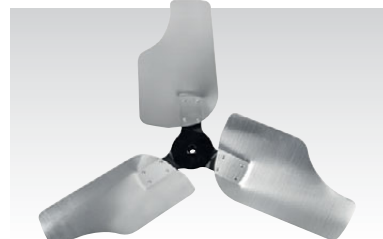
	A	B	C
Model No:	HVD24P	HVD30P	HVD36P
Fan Diameter:	Ø610mm(24")	Ø760mm(30")	Ø915mm(36")
Speeds:	2	2	2
Speed Range:	1300-1420rpm	880-960rpm	860-950rpm
Maximum Airflow:	266m ³ /min(9,420cfm)	288m ³ /min(10,175cfm)	363m ³ /min(12,855cfm)
Power:	330W	315W	410W
Supply/Plug Type:	230V/3-Pin	230V/3-Pin	230V/3-Pin
Power Supply Cable Length:	2m	2m	2m
Current:	1.43A	1.37A	1.78A

3 YEAR GUARANTEE*

3 Year guarantee on all Premier Industrial Fans.



Extra-wide drum.



Energy efficient blade design.



Robust frame with wheels.



Enclosed motor.